

7,650 SF AVAILABLE



**25-66 BOROUGH PLACE
WOODSIDE, NY**

IMMEDIATE OCCUPANCY

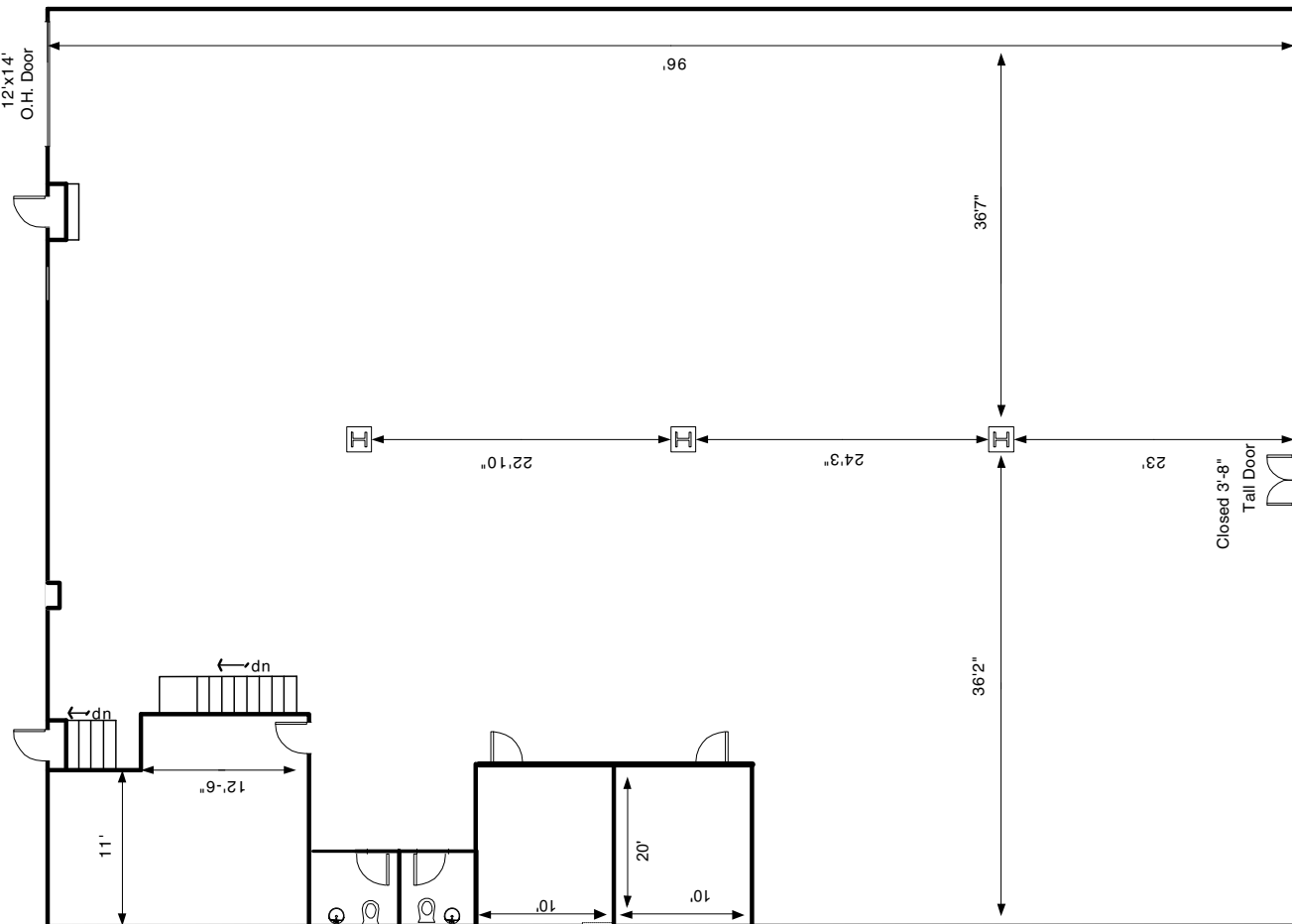
**16' CLEAR
400 AMPS
8% FINISH
(1) DRIVE-IN DOOR
BROKERS PROTECTED**

25-66 BOROUGH PLACE, WOODSIDE, NY

IMMEDIATE OCCUPANCY

7,650 SF INDUSTRIAL UNIT

- (1) 12'x 14' Drive-in Door
- (2) Bathrooms
- 16' Clear
- 400 AMPS / 3-Phase Power
- 8% Finish
- AC in Offices
- Gas Heat in Warehouse
- LED Lighting Throughout
- Perfect for Light Manufacturing, Storage or Service Related Use
- .3 Miles south of the GCP & BQE Merge
- .6 Miles North of Route 25A
- 1 Mile from 4 Subway Entrances:
 - Northern Blvd: 1 Mile
 - 65 Street: 1 Mile
 - Astoria-Ditmars Blvd: 1.2 miles
 - Astoria Blvd: 1.4 Miles
- 1.5 Miles to MTA Bus Transport Hubs
- 2.5 Miles to La Guardia Airport
- Centralized Location for Simplified Commuting and Freight Logistics



DANA GUCCIARDO, DIRECTOR OF LEASING | M: 516-509-4945 O: 631-420-0070 | DANA@BRENTMAKO.COM



BRENTMAKO
REAL ESTATE GROUP

The information contained herein is subject to error, change, and actual field conditions.