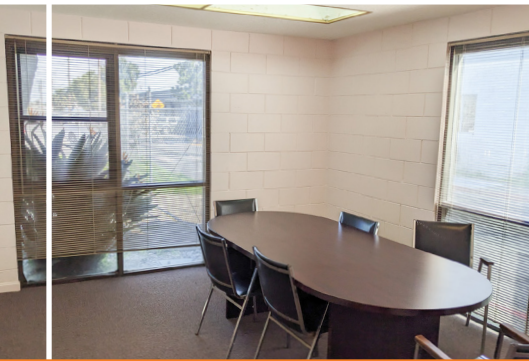


1260 ELMER STREET

BELMONT, CA 94022



AVAILABLE FOR LEASE

PROPERTY HIGHLIGHTS

- RBA +/- 4,225 SQFT
- APPROX. 8,712 SQFT LOT
- +/- 4,000 SQFT FULLY SECURED YARD AREA
- 2 GRADE-LEVEL ROLL-UP DOORS (1-10X10 AND 1-10X12)
- 14' CLEAR HEIGHT
- FULLY INSULATED WAREHOUSE SPACE
- 3-PHASE/400 AMP/480 VOLT POWER
- INTERIOR OFFICE HVAC SYSTEM
- COMPRESSED AIRLINES THROUGHOUT WAREHOUSE SPACE
- 2 SEPARATE OFFICES
- 1 CONFERENCE ROOM
- 2 WAREHOUSE RESTROOMS



BRYAN DIMESIO

Senior Director Investments | Palo Alto Office
Cell: 415.786.5332 | CA Lic: 01967714
Bryan.Dimesio@marcusmillichap.com

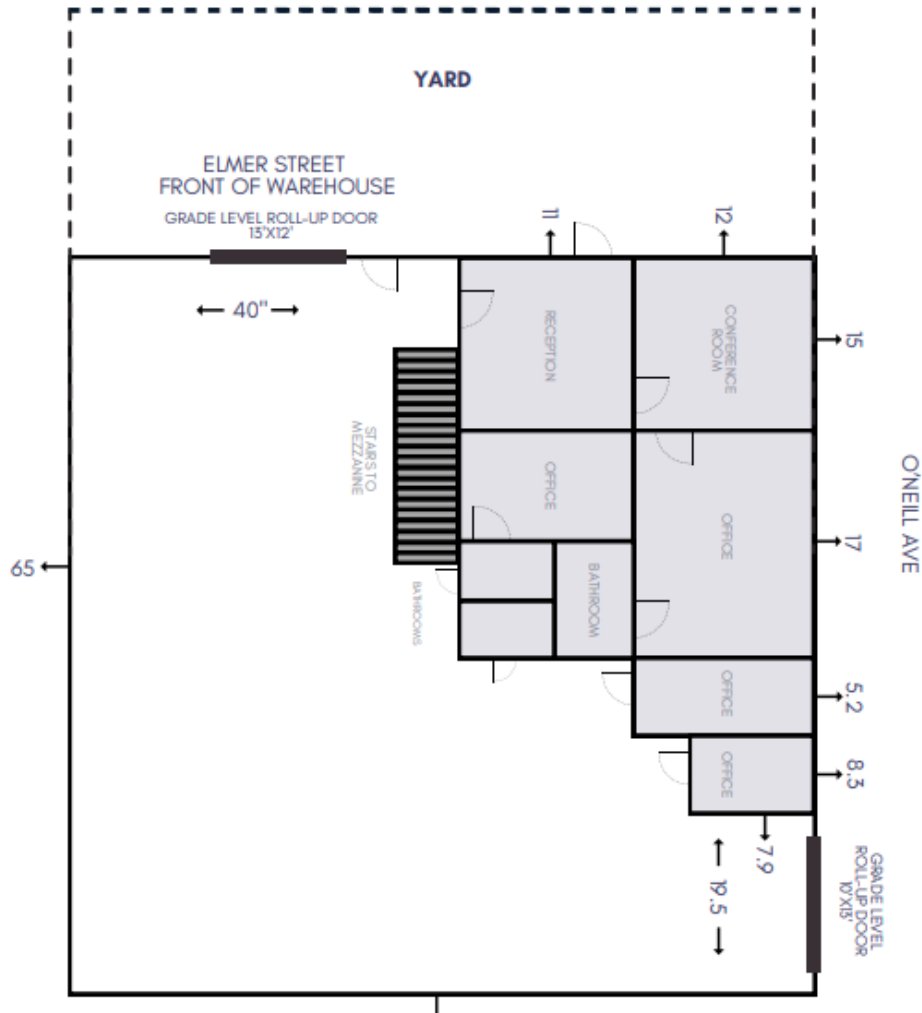


SCOTT FERGUSON

Associate Investments | Palo Alto Office
Cell: 408.705.6623 | CA Lic: 02180149
Scott.Ferguson@marcusmillichap.com

1260 ELMER STREET

BELMONT, CA 94022



AVAILABLE FOR LEASE

CONTACT FOR MORE DETAILS

BRYAN DIMESIO

Senior Director Investments | Palo Alto Office

Cell: 415.786.5332 | Bryan.Dimesio@marcusmillichap.com

CA Lic: 01967714

SCOTT FERGUSON

Associate Investments | Palo Alto Office

Cell: 408.705.6623 | Scott.Ferguson@marcusmillichap.com

CA Lic: 02180149