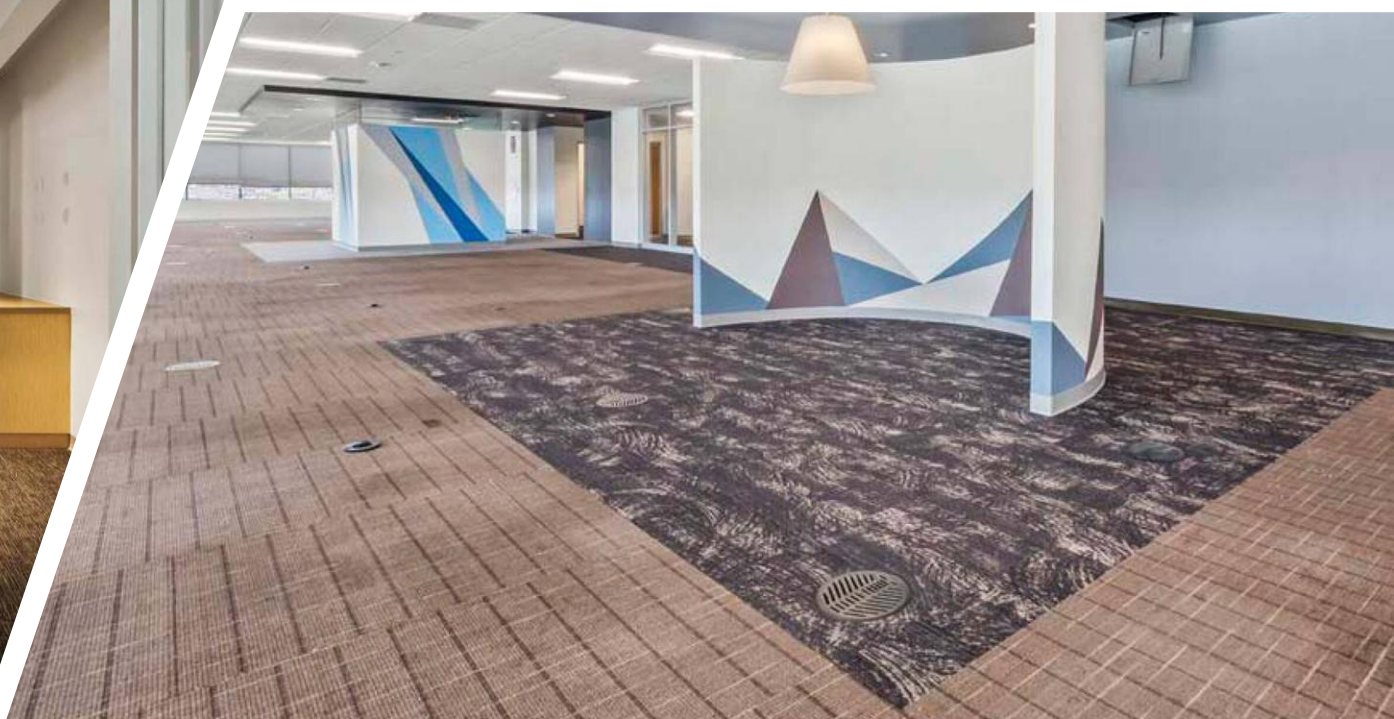




3100 Quail Springs

OKLAHOMA CITY, OKLAHOMA 73134





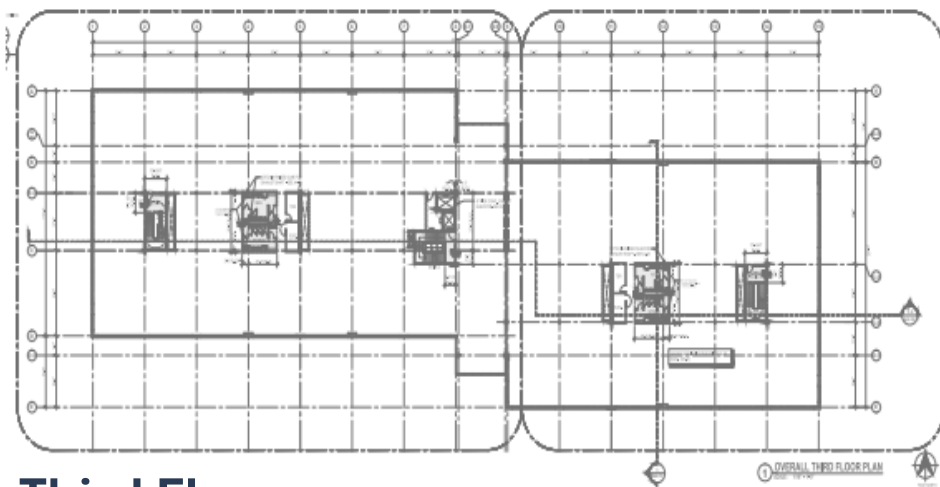


PROPERTY DETAILS

Building Size	145,635 SF MOL
Loading Dock	Yes
Land Size	12.10 AC
Zoning	C-3
Year Built	2009
Class	B

LEASE DETAILS

Floors	3 (Only Top Floor Available)
Rentable SF	49,321 SF MOL
Lease Rate	\$23/SF/Full Service
Parking	990 Spaces 26 ADA
Elevators	2
Tenant Improvement	Allowance Available



Third Floor

Drone
Footage



Tom H Vaught, SIOR

tom@victorycre.com

C: 405.850.6556



Tom H Vaught, SIOR

tom@victorycre.com

405-850-6556

