



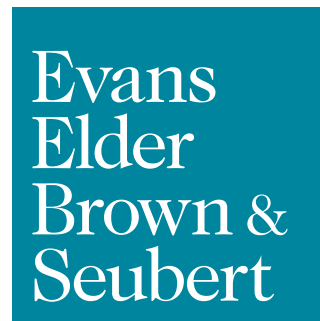
FOR LEASE

Crescent Village Retail/Office

Crescent Village
2780 Shadow View Dr.
Eugene, OR 97408

DETAILS

- Approximately 672 square feet
- Storefront access on west facing side of Crescent Village, adjacent to b² Wine Bar
- Excellent move-in ready condition
- \$27.00 per square foot, triple net



COMMERCIAL REAL ESTATE

CONTACT

Stephanie Seubert

stephanie@eebcre.com

Alan Evans

alan@eebcre.com

Jackson Seubert

jackson@eebcre.com

541.345.4860

Licensed in the State of Oregon.

Crescent Village Site Plan

Crescent Village
2780 Shadow View Drive | Eugene OR 97408

Evans
Elder
Brown &
Seubert

COMMERCIAL REAL ESTATE

CONTACT

Stephanie
Seubert

stephanie@eebcre.com

Alan
Evans

alan@eebcre.com

Jackson
Seubert

jackson@eebcre.com

541.345.4860

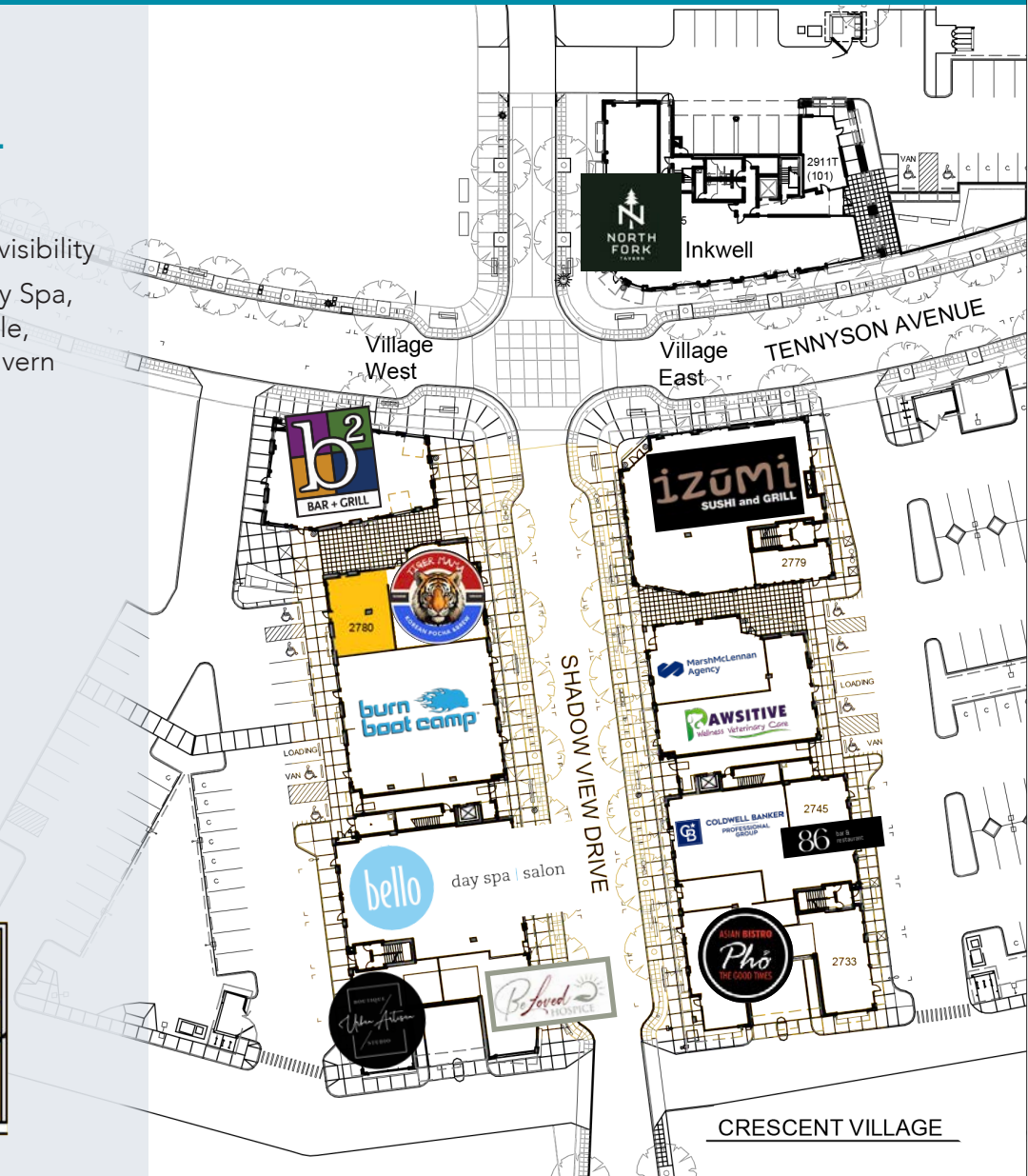
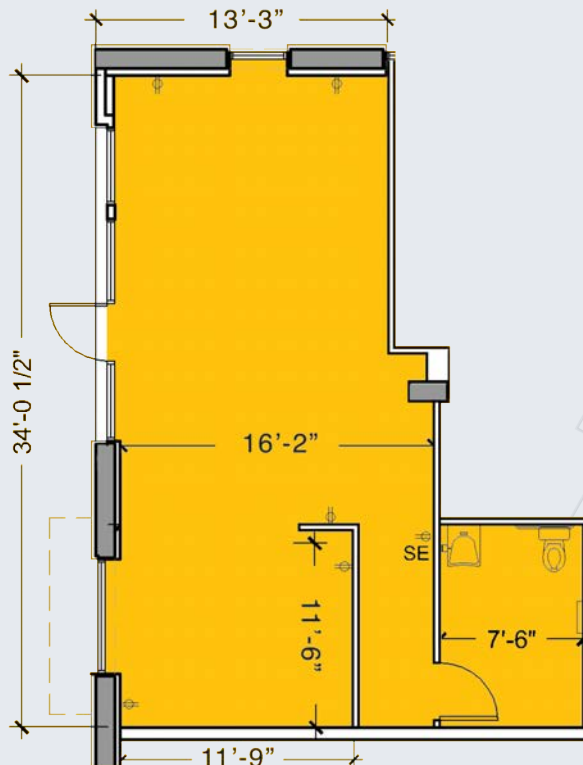
101 East Broadway
Suite #101
Eugene, OR 97401

Licensed in the
State of Oregon.

2780

APPROXIMATELY 672 SQUARE FEET

- Open space with private restroom
- Large windows provide abundant light & visibility
- Crescent Village tenants include Bello Day Spa, Pho The Good Times, Izumi, b² Bar & Grille, Pawsitive Veterinary Care & North Fork Tavern

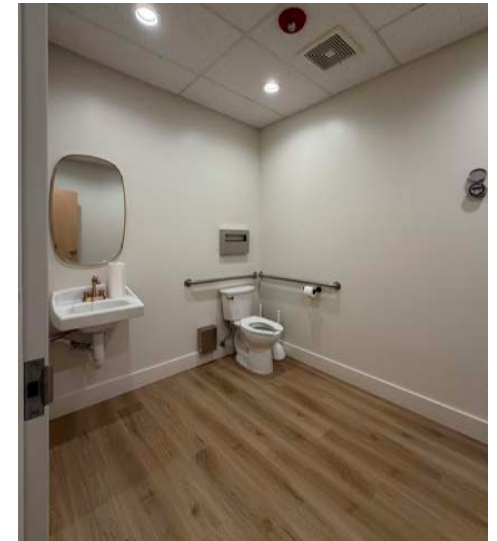
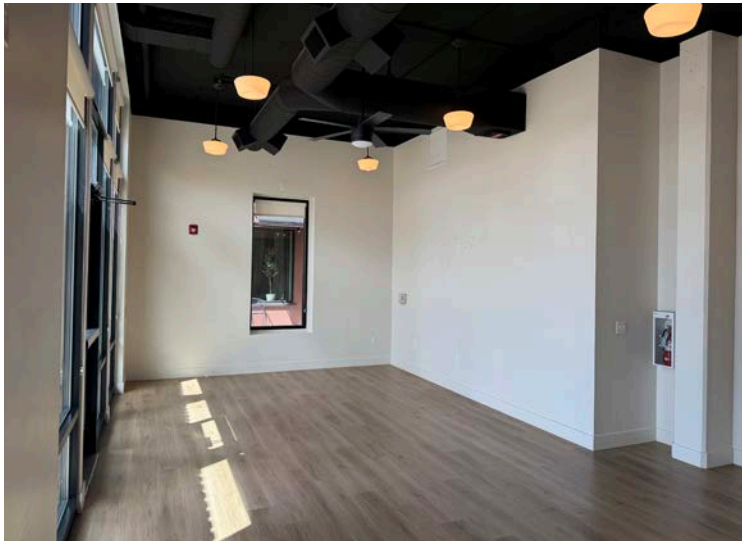


Photographs

Crescent Village
2780 Shadow View Drive | Eugene OR 97408

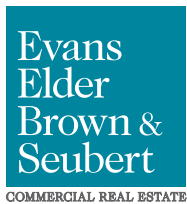
Evans
Elder
Brown &
Seubert

COMMERCIAL REAL ESTATE



Location

Crescent Village
2780 Shadow View Drive | Eugene OR 97408



CONTACT

541.345.4860

Stephanie Seubert
stephanie@eebcre.com

Alan Evans
alan@eebcre.com

Jackson Seubert
jackson@eebcre.com