

# FOR LEASE

COMMERCE PARK SOUTHWEST  
12919 SOUTHWEST FWY., SUITE 150



## BUILDING SPECIFICATIONS

<b>Address:</b>	12919 Southwest FWY., Suite 150   Stafford TX, 77477
<b>Suite Size:</b>	4,373 SF
<b>Office:</b>	2,786 SF
<b>Warehouse:</b>	1,587 SF
<b>Truck Loading:</b>	(1) Grade-level door
<b>Clear Height:</b>	12'-6"
<b>Overview:</b>	Close access to Beltway 8, Highway 59, and Highway 90. Located in business friendly Stafford, TX.



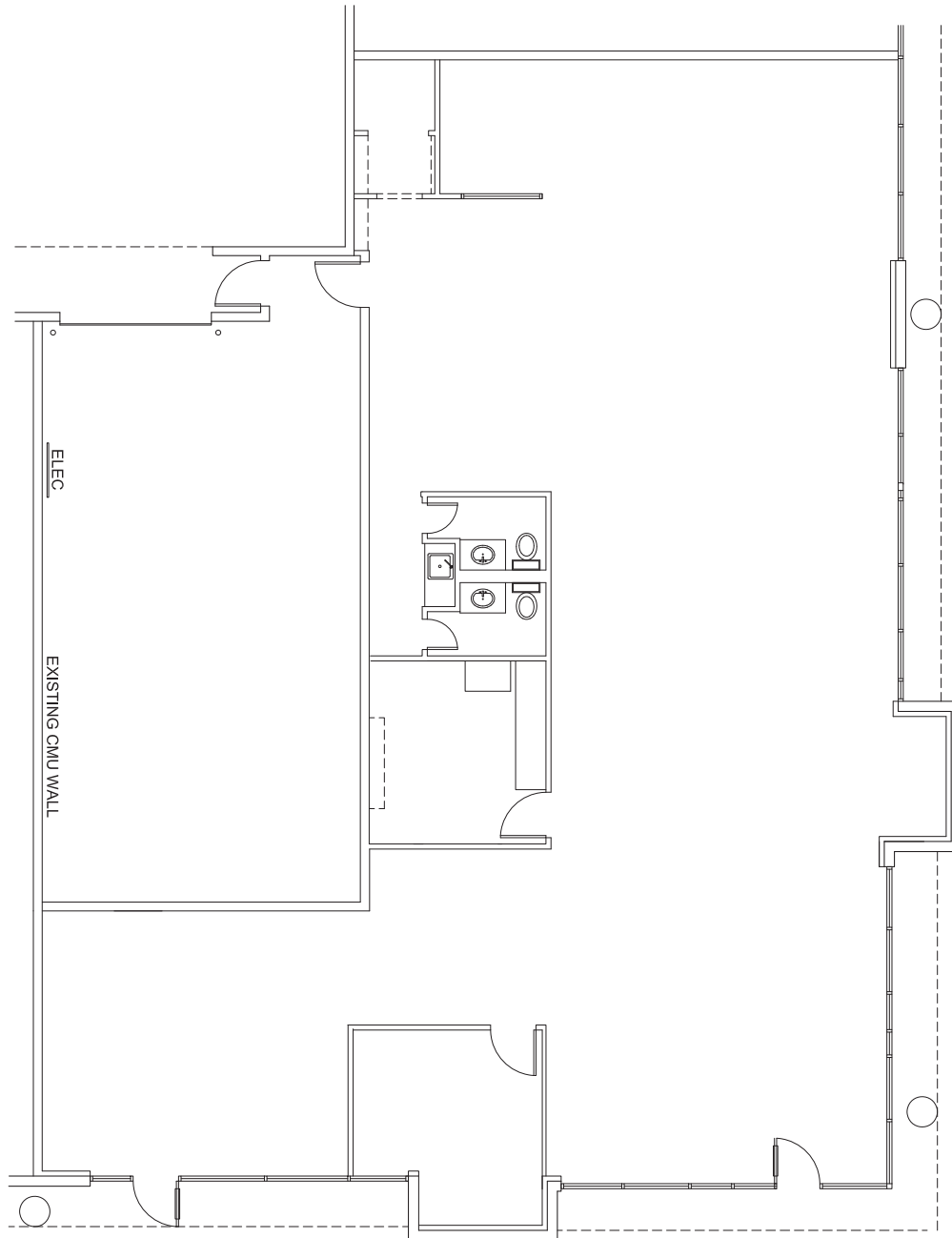
Owned By  
**maple**tree

Leasing By  
**STREAM**

Meg Zschappel | 713.300.0284 | meg.zschappel@streamrealty.com  
Jack Rathe | 713.300.0298 | jack.rathe@streamrealty.com

# FOR LEASE

COMMERCE PARK SOUTHWEST  
12919 SOUTHWEST FWY., SUITE 150



Owned By  
**maple**tree

Leasing By  
**STREAM**

Meg Zschappel | 713.300.0284 | meg.zschappel@streamrealty.com  
Jack Rathe | 713.300.0298 | jack.rathe@streamrealty.com