



## V/L East Townsend Rd.

St Johns, Michigan 48879

### Property Highlights

- Superb retail pad
- Corner location
- Possible land trade for investment property
- Approved site with drive thru 7,850 SQ FT
- Major retailers in vicinity
- Many uses possible
- Access on 2 roads

### Offering Summary

Sale Price:	\$349,000
Lot Size:	1.57 Acres

### For More Information

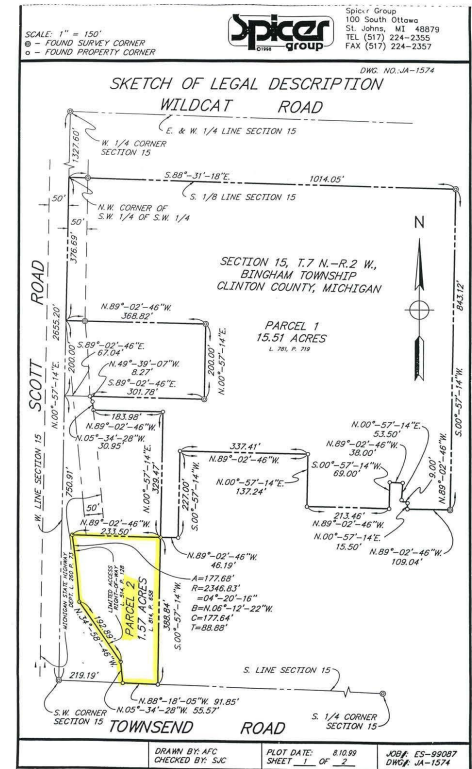
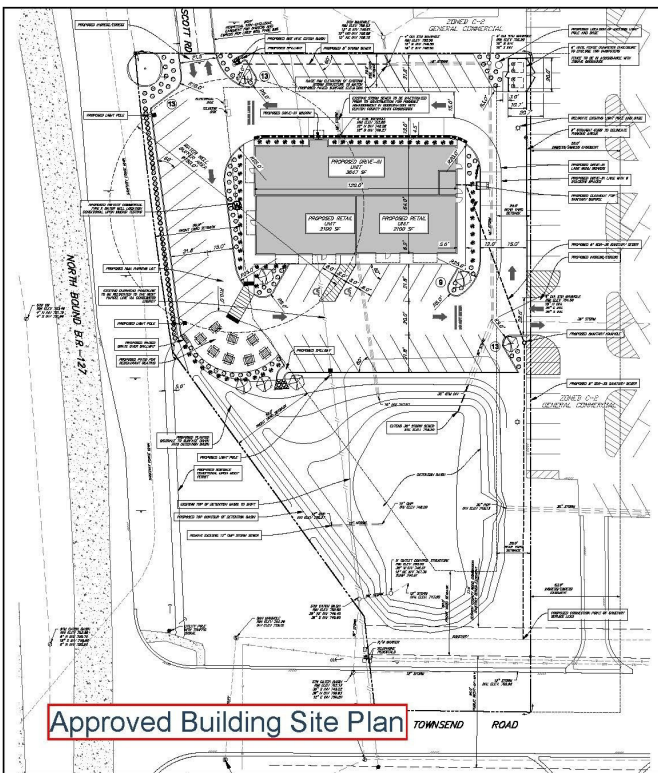
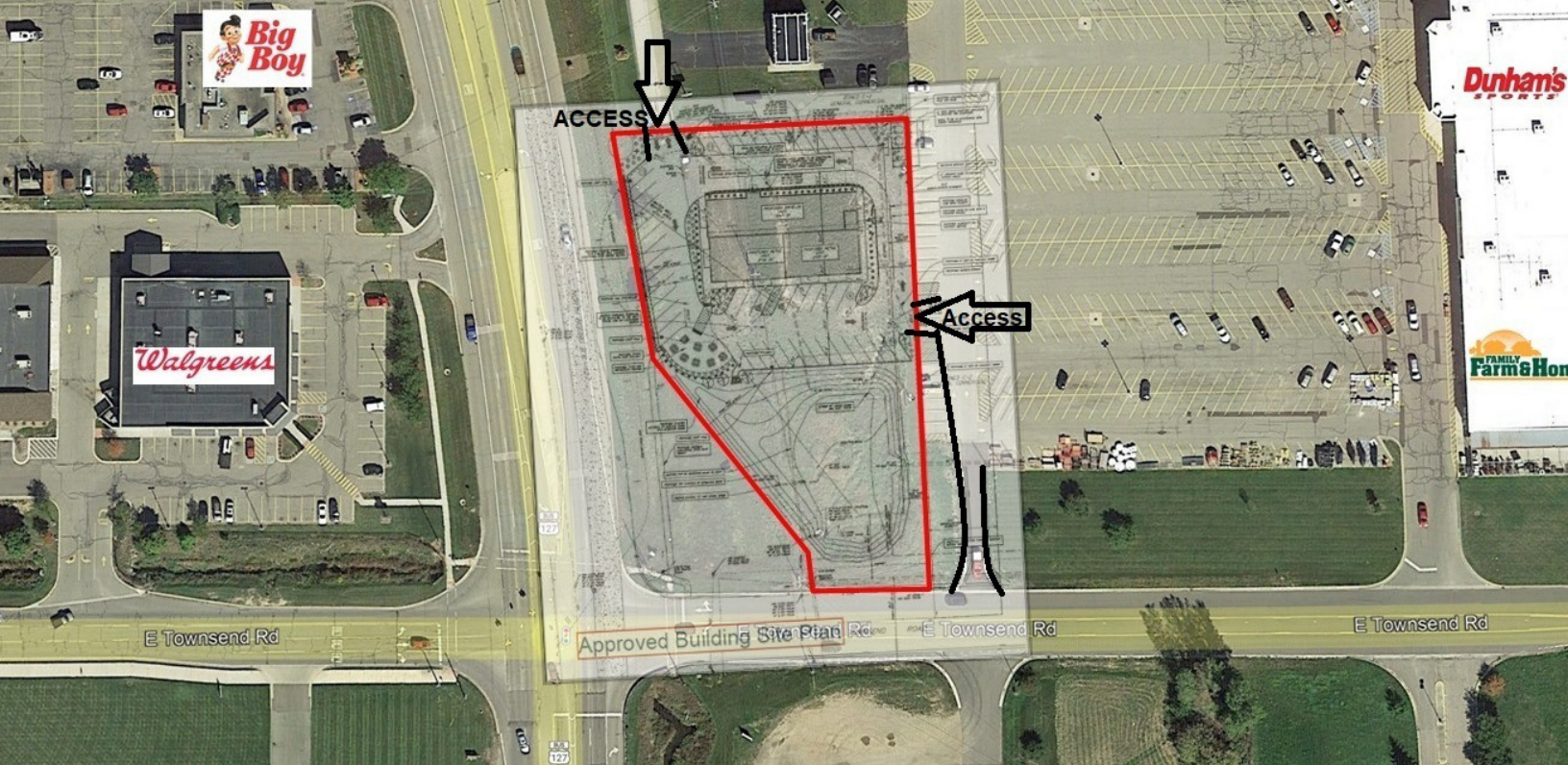


#### Gino Baldino

Commercial Advisor

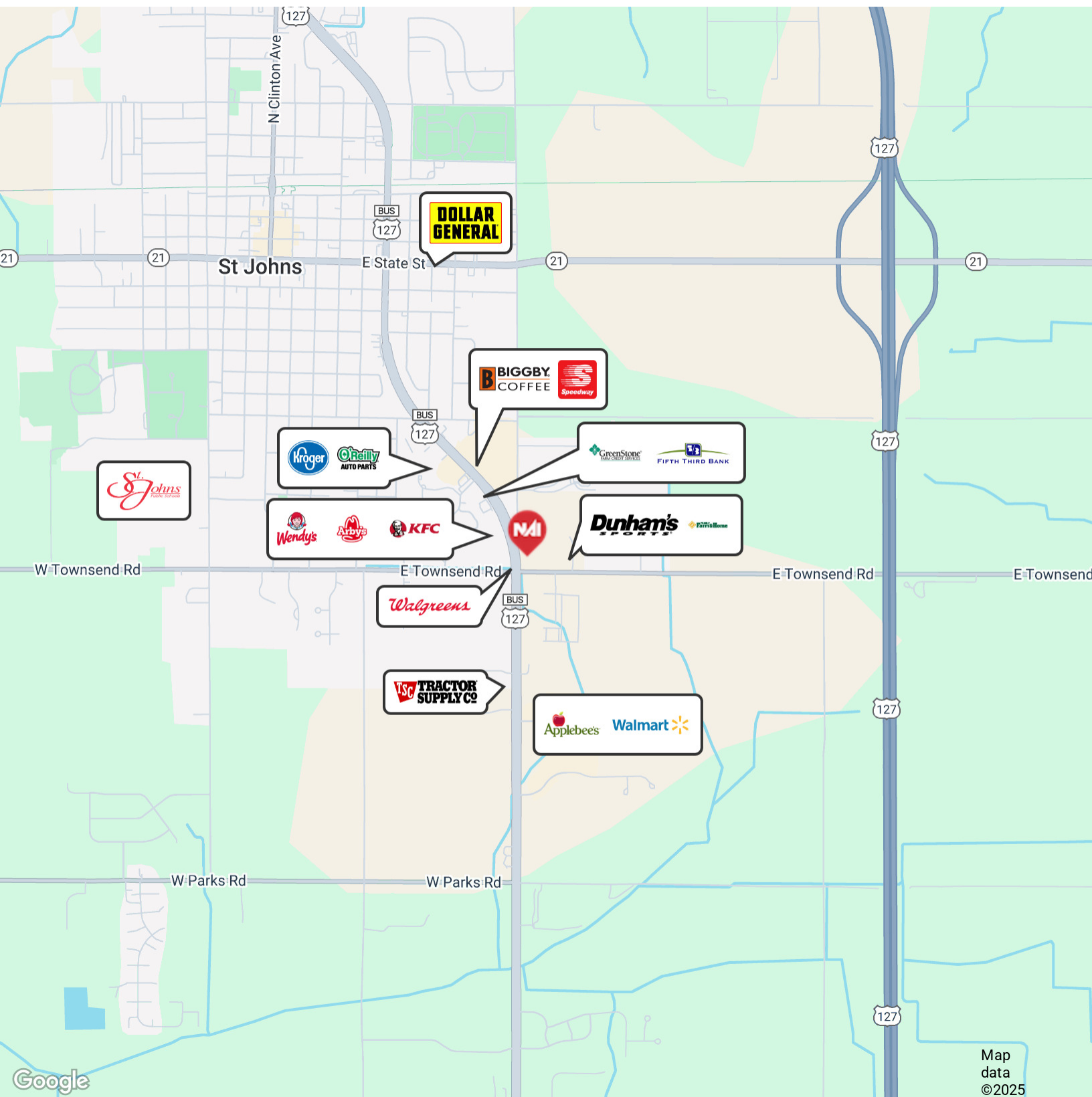
O: 517 487 9222 | C: 517 202 2137

gbaldino@naimidmichigan.com



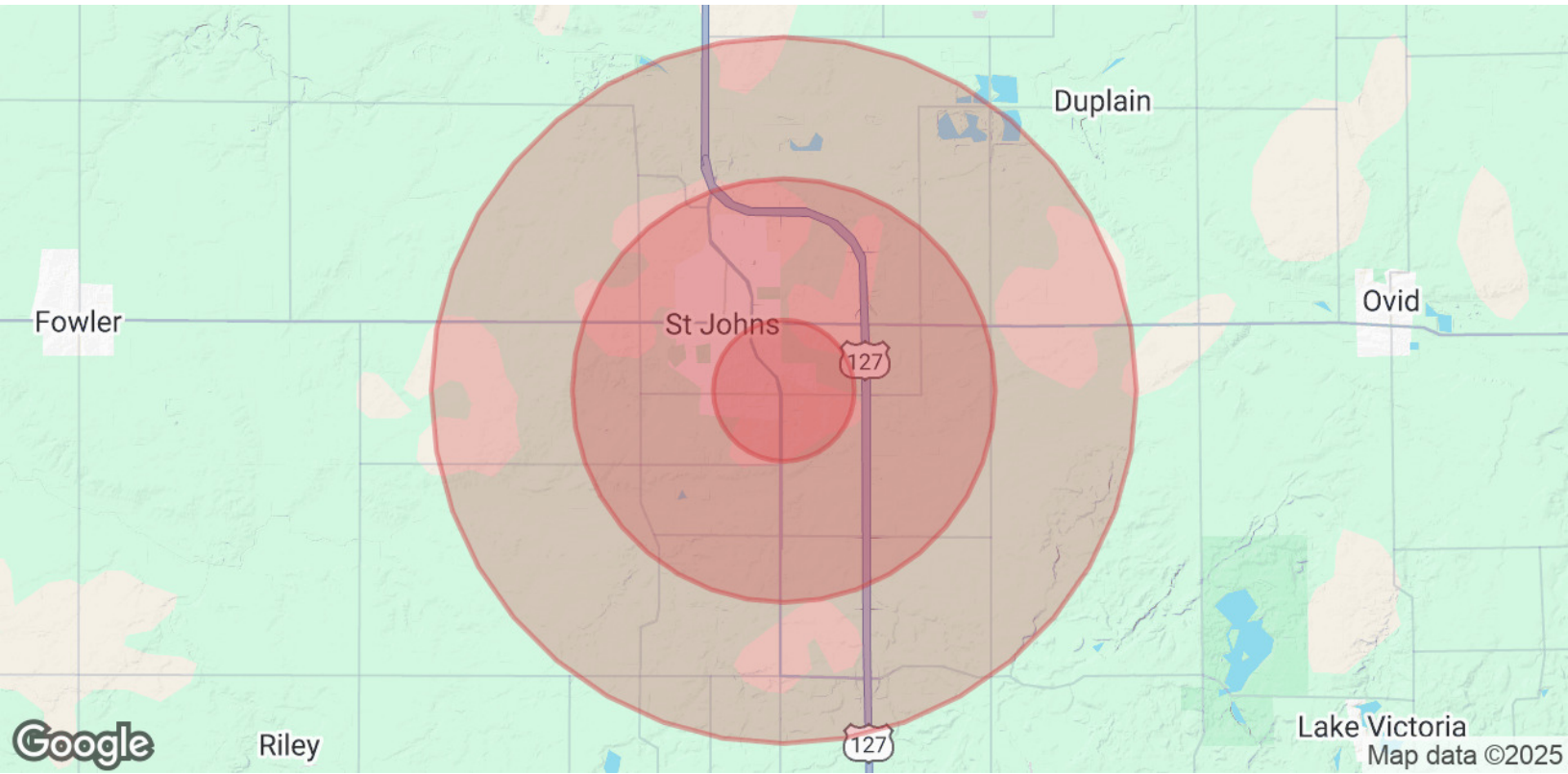
NO WARRANTY OR REPRESENTATION, EXPRESS OR IMPLIED, IS MADE AS TO THE ACCURACY OF THE INFORMATION CONTAINED HEREIN, AND THE SAME IS SUBMITTED SUBJECT TO ERRORS, OMISSIONS, CHANGE OF PRICE, RENTAL OR OTHER CONDITIONS, PRIOR SALE, LEASE OR FINANCING, OR WITHDRAWAL WITHOUT NOTICE, AND OF ANY SPECIAL LISTING CONDITIONS IMPOSED BY OUR PRINCIPALS. NO WARRANTIES OR REPRESENTATIONS ARE MADE AS TO THE CONDITION OF THE PROPERTY OR ANY HAZARDS CONTAINED THEREIN ARE INTENDED TO BE IMPLIED.

2149 Jolly Road, Suite 200  
 Okemos, MI 48864  
 517 487 9222 tel  
 naimidmichigan.com



NO WARRANTY OR REPRESENTATION, EXPRESS OR IMPLIED, IS MADE AS TO THE ACCURACY OF THE INFORMATION CONTAINED HEREIN, AND THE SAME IS SUBMITTED SUBJECT TO ERRORS, OMISSIONS, CHANGE OF PRICE, RENTAL OR OTHER CONDITIONS, PRIOR SALE, LEASE OR FINANCING, OR WITHDRAWAL WITHOUT NOTICE, AND OF ANY SPECIAL LISTING CONDITIONS IMPOSED BY OUR PRINCIPALS NO WARRANTIES OR REPRESENTATIONS ARE MADE AS TO THE CONDITION OF THE PROPERTY OR ANY HAZARDS CONTAINED THEREIN ARE INTENDED TO BE IMPLIED

2149 Jolly Road, Suite 200  
Okemos, MI 48864  
517 487 9222 tel  
naimidmichigan.com



<b>Population</b>	<b>1 Mile</b>	<b>3 Miles</b>	<b>5 Miles</b>
Total Population	2,813	10,260	12,854
Average Age	43	42	42
Average Age (Male)	41	40	40
Average Age (Female)	45	43	43
<b>Households &amp; Income</b>	<b>1 Mile</b>	<b>3 Miles</b>	<b>5 Miles</b>
Total Households	1,202	4,305	5,276
# of Persons per HH	2.3	2.4	2.4
Average HH Income	\$90,787	\$87,881	\$91,212
Average House Value	\$248,998	\$227,007	\$244,615

Demographics data derived from AlphaMap