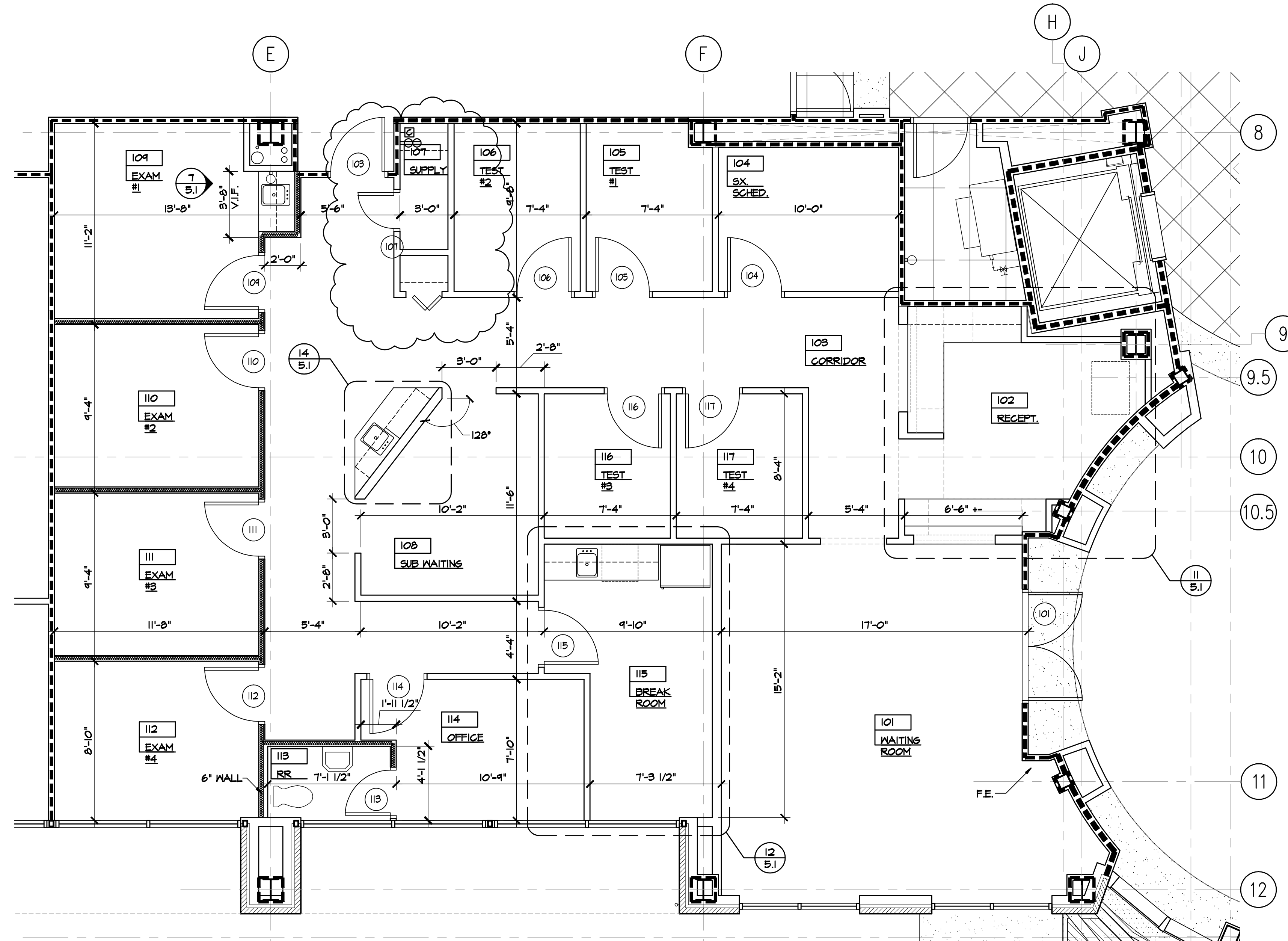




**Johnson
Architecture**

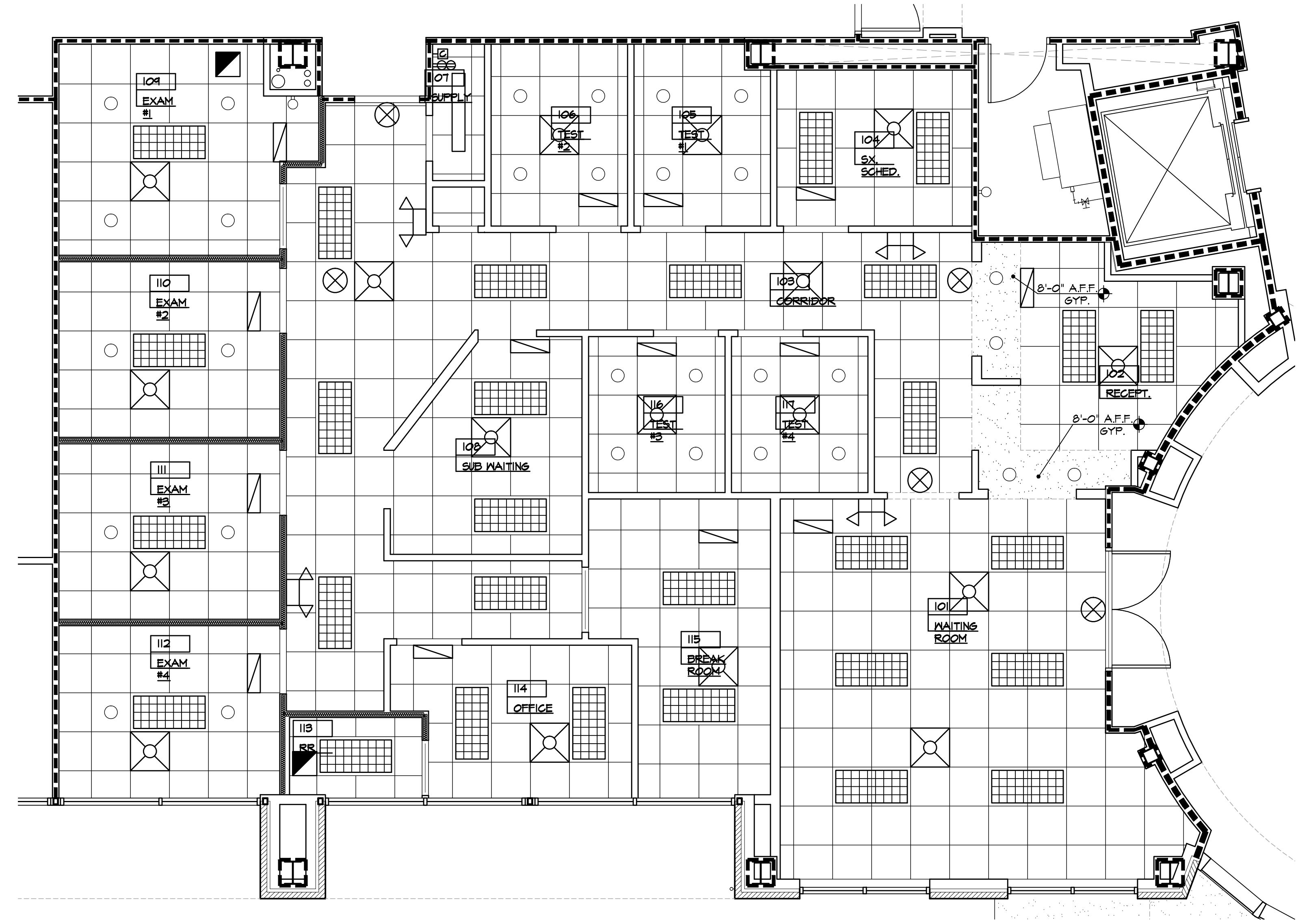
10133 Sherrill Blvd., Suite 100
Knoxville, TN 37932
865.671.9060
jainc.com



1 FLOOR PLAN
SCALE: 1/4" = 1'-0"

PARTITION LEGEND	
	EXISTING ONE HOUR RATED WALLS - U.L. DESIGN NO. U465. 3-5/8" 20 GA. STL. STUDS AT 2'-0" O.C. MAX. WITH 5/8" GYPSUM BOARD ON EACH SIDE. PROVIDE 3 1/2" SOUND ATTENUATION BATTIS IN WALLS OF ENCLOSED ROOMS. TYP. EXTEND MTL. STUD FRAMING AND SOUND BATTIS TO STRUCTURE ABOVE, TYP.
	TYPICAL PARTITION. 3-5/8" 20 GA. STL. STUDS AT 2'-0" O.C. MAX. WITH 5/8" GYPSUM BOARD ON EACH SIDE. EXTEND MTL. STUD FRAMING 4" ABOVE CEILING HEIGHT. WALLS INDICATED WITH SOLID HATCH TO HAVE 3 1/2" SOUND ATTENUATION BATTIS, TYP.
NOTE: TENANT RESPONSIBLE FOR FINISH OUT OF CORRIDOR WALL ON TENANT SIDE IN COMPLIANCE WITH U.L. U465 REQUIREMENTS.	

F.E. - FIRE EXTINGUISHER LOCATION. VERIFY W/ LOCAL JURISDICTION FOR ALL APPLICABLE LOCATIONS OTHER THAN SHOWN ON DOCUMENTS.



2 REFLECTED CEILING PLAN
SCALE: 1/4" = 1'-0"

CEILING MATERIAL & FIXTURE LEGEND			
	2'x4' LAY-IN FLUORESCENT LIGHT FIXTURE W/ PARABOLIC LENS (SEE ELECT.)		EMERGENCY LIGHTING
	1'x4' FLUORESCENT LIGHT FIXTURE (SEE ELECT.)		EXIT SIGN
	HVAC SUPPLY DIFFUSER		SPRINKLER HEAD
	HVAC RETURN GRILLE		2'x4' ACOUSTICAL CEILING TILE
	EXHAUST FAN		INCANDESCENT GAN

REFLECTED CEILING PLAN NOTES

- CONTRACTOR TO COORDINATE INSTALLATION AND LOCATIONS OF LIGHT FIXTURES, HVAC DIFFUSERS AND FIRE SPRINKLER HEADS WITH OTHER AFFILIATED TRADES. NOTIFY ARCHITECT OF ANY CONFLICTS PRIOR TO INSTALLATION.
- ANY PENETRATIONS THROUGH FIRE RATED CONSTRUCTION IS TO BE DONE BY APPROVED MEANS AND IN COMPLIANCE WITH THE U.L. ASSEMBLIES IDENTIFIED. CONTRACTOR MAKING THE PENETRATION IS RESPONSIBLE FOR SEALING IT.
- FIRE SPRINKLER HEAD LOCATIONS ARE TO BE CENTERED IN CEILING TILE.

PLOT SCALE: AS NOTED

A New Tenant Finish-Out for:
DR. MANN
Century Park III
Knoxville, Tennessee

FLOOR PLAN
REFLECTED CEILING PLAN

REVISIONS:

DATE: 05/21/08
FILE NAME: Dr. Mann-2.1
PROJECT NO: 283022

2.1