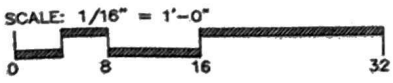
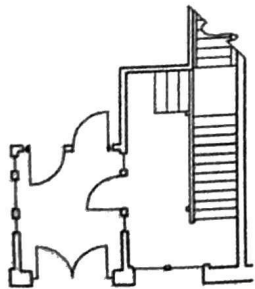


- Suite A  
1,101 RSF
- Suite B  
1,875 RSF
- Suite D  
284 RSF
- Suite E  
347 RSF



Drawing for:  
 421 E. 6th St., Ltd.  
 421 E. 6th St., Ste. A  
 Austin, Texas 78701

421 E. 6th St.  
 SECOND FLOOR  
 RENTABLE AREA: 3,607 S.F.

THE MEASUREMENTS AND FLOOR PLANS ARE ACCURATE TO WITHIN 2% INTERIOR WALLS AND DEMISING WALLS ARE ASSUMED TO BE 5" THICK.  
 Project No.: 20244.02  
 Date: October 18, 2002  
 ©2002

**± DIMENSIONS ±**  
**FLOOR PLANS**  
 7301 Waterline Rd.  
 Austin, Texas 78731  
 Phone: 342-0114 Fax: 342-1965