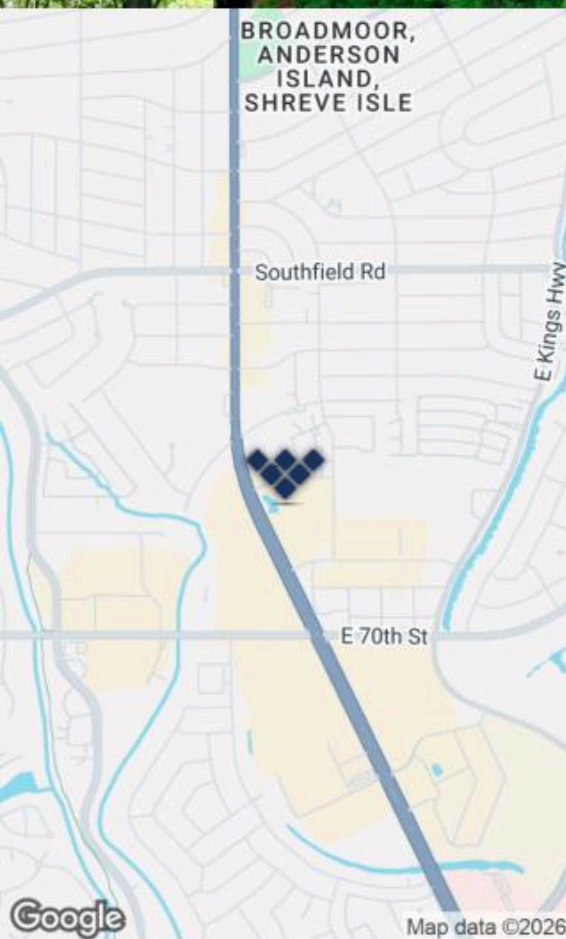


**BELLEMEAD  
CENTRE**

**BOMA  
360**  
PERFORMANCE PROGRAM®  
DESIGNATED BUILDING

**Jackson B. Wheless**  
Direct 318.698.1113  
Mobile 318.344.7384  
JacksonW@Sealynet.com

**Sealy Real Estate Services**  
333 Texas Street, Suite 1050  
Shreveport, LA 71101  
318.222.8700  
www.sealynet.com

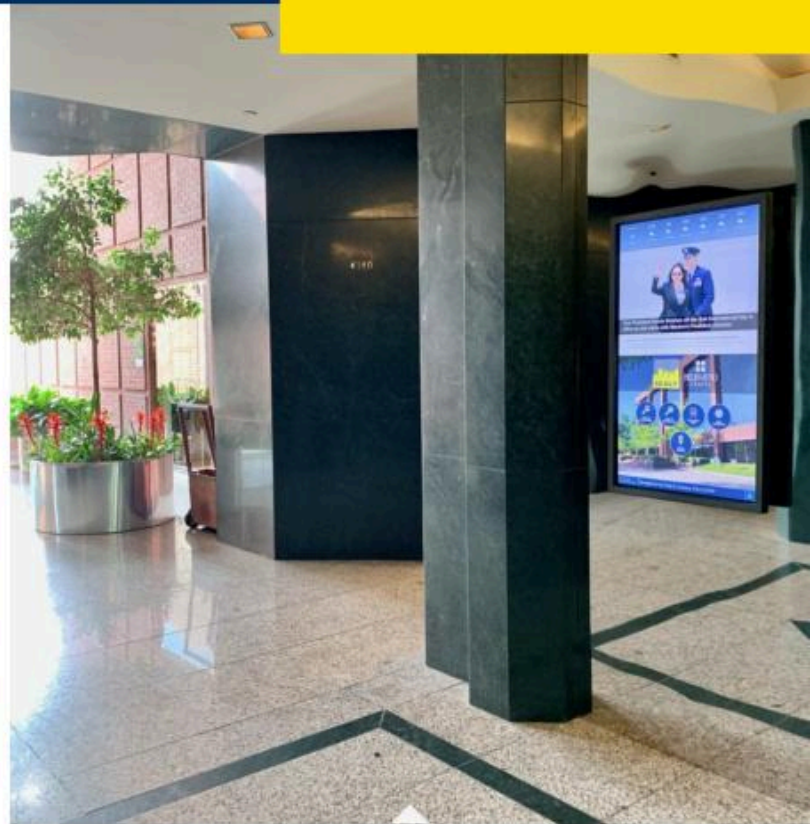
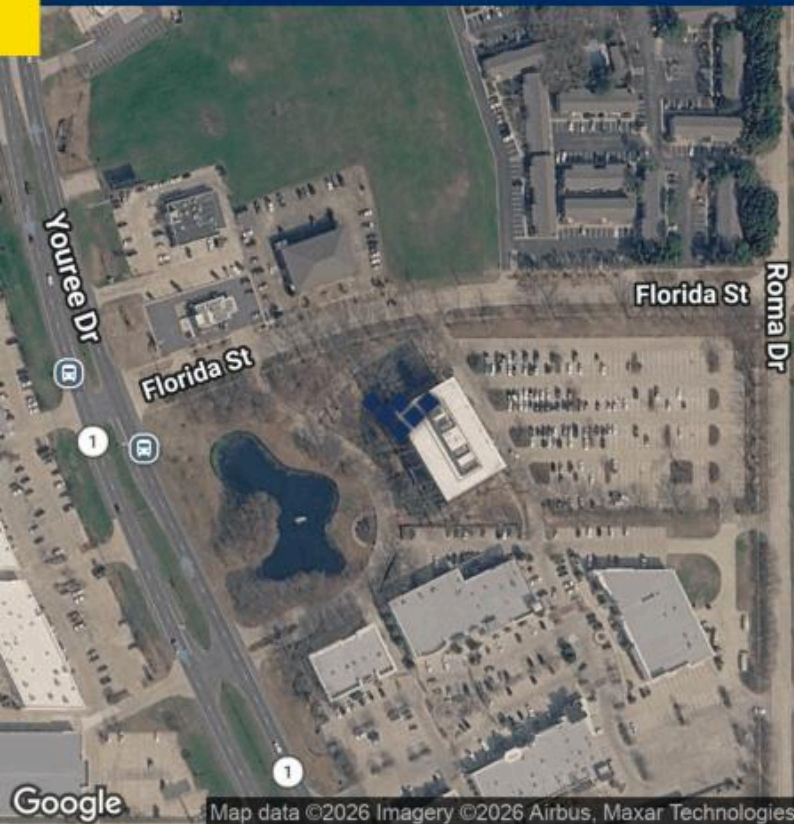


### Offering Summary

Lease Rate:	\$20 - \$21/ SF/Yr
Lease Type:	Full-Service Gross
Building Size:	87,894 SF
Available SF:	767 - 2,168 SF
Total Available SF:	4,956 SF
Lot Size:	6.67 Acres
Year Built:	1987
Zoning:	C-3
Market:	LA-Shreveport

### Location Overview

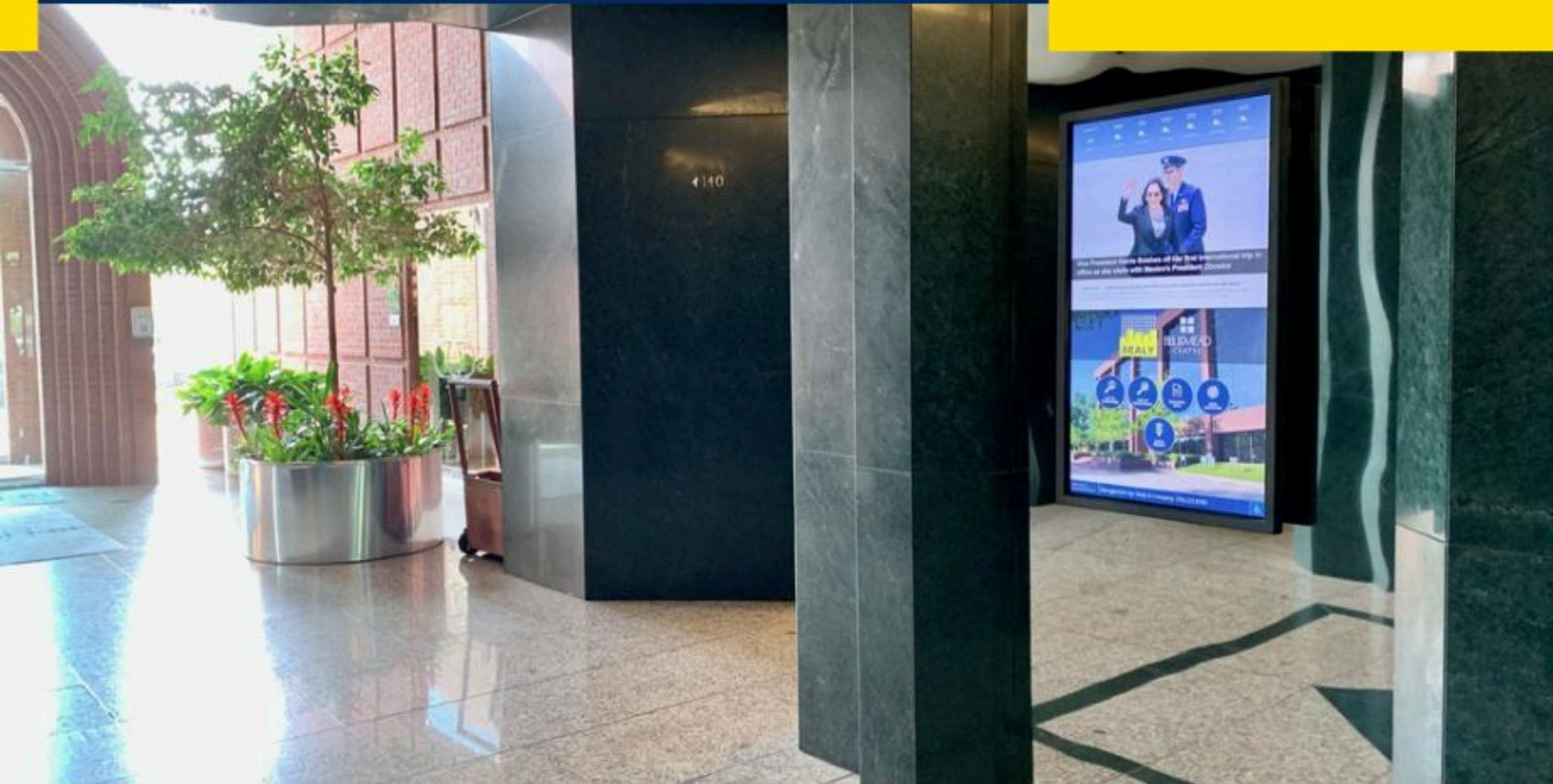
Located within the busiest corridor of Shreveport (Youree Drive/E 70th Street), One Bellemead Centre offers the ideal location with Youree Drive access and visibility, as well as access to both Interstate 49 and 20 (less than five miles away), and LA Interloop 3132 (less than two miles). The 6.67-acre location provides ample parking with Centre's 319 complimentary spaces to the rear of the five-story building.



Building Name	One Bellemead Centre
Property Type	Full-Service Executive
Property Subtype	Office Building
APN	1713020001016700
Building Class	A
Number of Buildings	1
Number of Floors	5
Parking Spaces	319

One Bellemead Centre is a Class A office building located on 6.68 acres with landscaped grounds, an ornamental lake, and a fountain. The building features an atrium finished with brick, marble, and granite. It has an FOB system for after-hours access. Janitorial services and standardized tenant signage are provided. The property offers quality office layouts and convenient suburban access in Shreveport.

- Nightly Janitorial Service
- Modern 155-ton HVAC System
- Beautifully Landscaped & Ornamental Lake with Fountain
- FOB System Controls Access After Hours
- On-Site Management/ Maintenance
- Automatic Wet Pipe Sprinkler System
- Free Parking
- Adjacent to the Upscale Center Shoppes at Bellemead
- On-Site Mailboxes, UPS & FedEx with Daily Pick-up Service
- On-Site Vending
- T1 Lines with Telephone Demarcation on Each Floor



### Lease Information

Lease Type:	Full Service Gross	Rental Increase:	3% Base Rent
Total Space:	767 - 2,168 SF	Lease Rate:	\$20 - \$21 SF/yr

### Available Spaces

Suite	Tenant	Size (SF)	Lease Type	Lease Rate	Description	Plan
■ 220	Available	2,021 SF	Full Service	\$20.00 SF/yr	Features a reception area, five offices, a conference room, a storage area, and a break room.	<a href="#">View Here</a>
■ 400	Available	767 SF	Full Service	\$21.00 SF/yr	Views overlooking the lake. Large reception area, file storage room and 2 offices.	<a href="#">View Here</a>
■ 590	Available	2,168 SF	Full Service	\$21.00 SF/yr	Views overlooking lake, 6 offices, conference room, kitchenette	<a href="#">View Here</a>





One Bellemead Centre is a BOMA 360® Performance Program–designated building, a recognition awarded by the Building Owners and Managers Association (BOMA) International to properties that meet rigorous standards for operational excellence.

The BOMA 360® designation evaluates a building’s day-to-day management practices across multiple operational categories including building operations, life safety and security, energy performance, sustainability, and tenant relations. Buildings earning this designation demonstrate a commitment to maintaining high standards in both physical operations and tenant service.

For prospective tenants, this certification reflects a professionally managed property where building systems, safety procedures, and operational practices are regularly evaluated against industry benchmarks—supporting a reliable, well-maintained, and responsive office environment.

### What BOMA 360® Certification Means

#### *For Tenants:*

- Professionally managed building operations aligned with national industry standards.
- Strong focus on life safety, security protocols, and building preparedness.
- Efficient building systems and operational performance.
- Responsive property management and tenant service practices.

