

The logo for NAI Commercial, featuring the letters 'NAI' in a bold, sans-serif font with a red diagonal line through the 'A', followed by the word 'Commercial' in a smaller, black, sans-serif font.

**NAI**Commercial

A red diagonal banner in the top right corner of the image, containing the text '± 2,500 SF' in white, sans-serif font.

± 2,500 SF

An aerial photograph of a modern glass skyscraper in a city center. The building's glass facade reflects the surrounding buildings and the sky. The building is surrounded by other high-rise structures and a construction site with scaffolding and materials.

#840 - 605 Robson Street | Vancouver, BC

## FOR LEASE

Opportunity to lease very well improved office space in Downtown Vancouver, located on the North West corner of Robson and Seymour Streets. Steps away from the Canada Line, SkyTrain, bus routes, shops, cafés, and restaurants. Well maintained building with on site management.

**Roy Gibbs, LL.B**  
Personal Real Estate Corporation  
Commercial Leasing & Sales  
778 834 4050  
rgibbs@naicommercial.ca

**Chris Oteman, B.Sc.**  
Commercial Leasing & Sales  
604 828 0535  
coteman@naicommercial.ca

**NAI Commercial**  
1075 W Georgia St, Suite 1300  
Vancouver, BC V6E 3C9  
+1 604 683 7535  
naicommercial.ca

# #840 - 605 Robson Street

Vancouver, BC

## Property Details

**Unit Size:** ± 2,500 SF

**Net Rent:** Contact Listing Agents

**Additional Rent:** \$22.79/SF (2025)

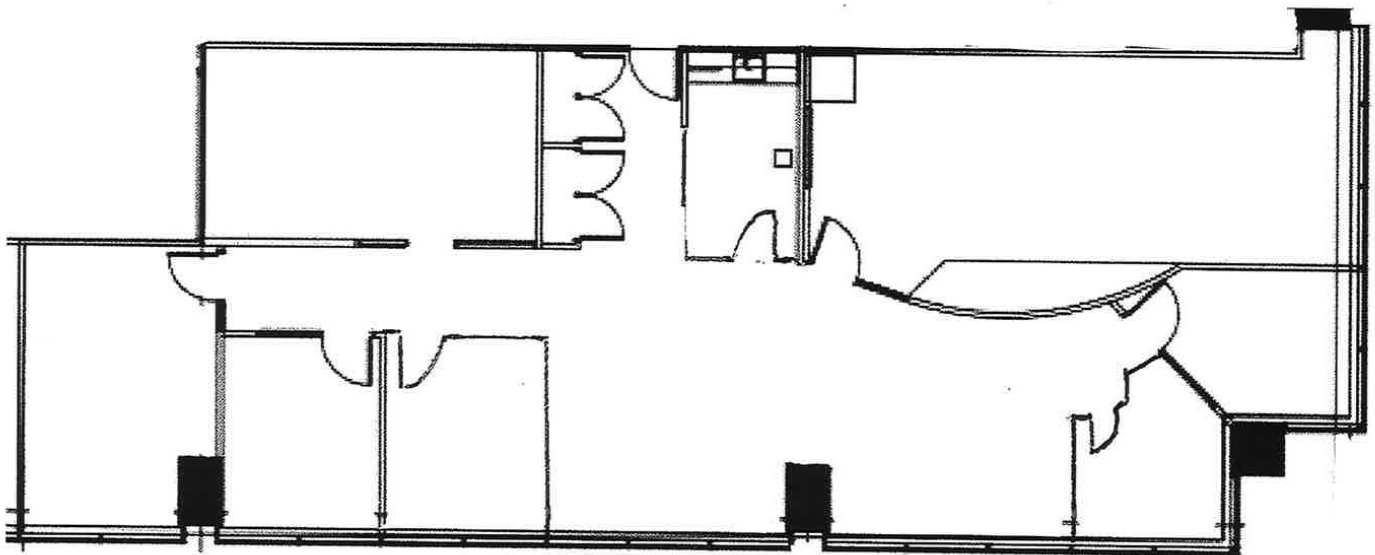
**Availability:** Immediate

### Premises:

- ▶ Improved with elevator exposure, 5 offices, meeting room, kitchenette and storage room.
- ▶ Premises are south and west facing and large, full height windows provide abundant natural light.
- ▶ Possibility to expand into neighboring space if necessary.

### Building Details:

- ▶ Close to Skytrain, Pacific Centre, the Supreme Court, Vancouver Art Gallery, and numerous restaurants & cafes
- ▶ Abundant visitor parking and secure tenant parking
- ▶ Secure bike storage.
- ▶ New showers and clothes dryers
- ▶ On-site building ownership, management and dedicated maintenance team
- ▶ Updated elevators



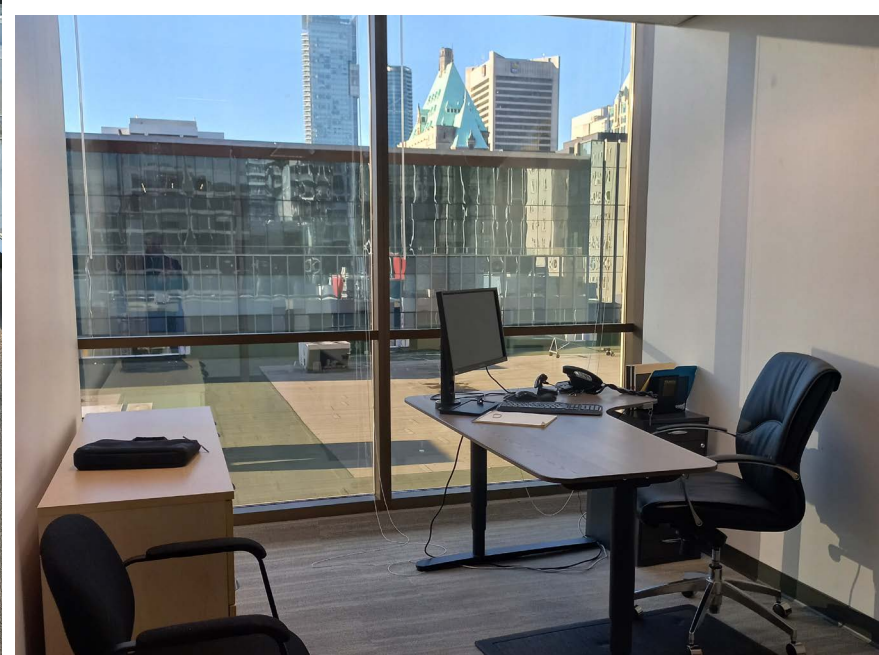
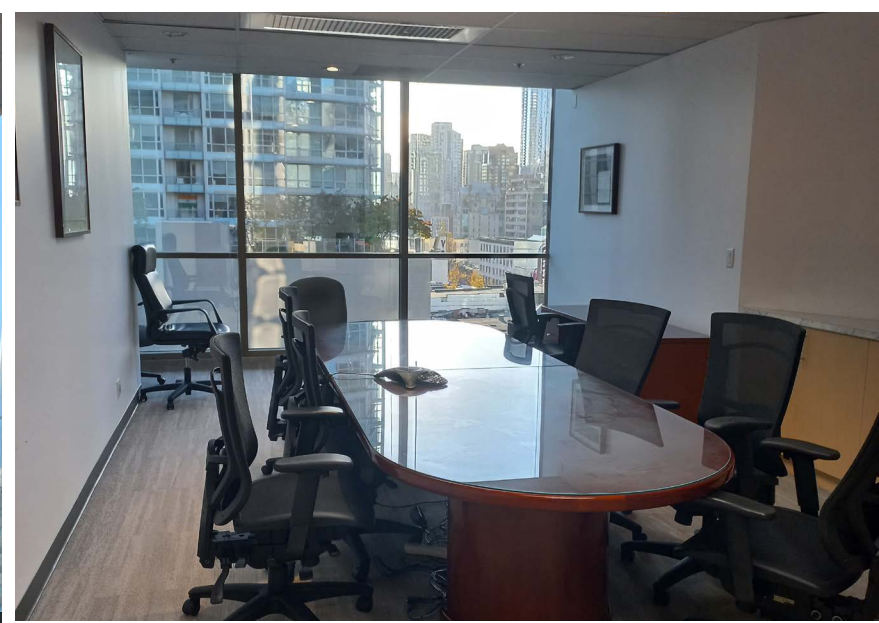
**Roy Gibbs, LL.B**

Personal Real Estate Corporation  
Commercial Leasing & Sales  
778 834 4050  
rgibbs@naicommercial.ca

**Chris Oteman, B.Sc.**

Commercial Leasing & Sales  
604 828 0535  
coteman@naicommercial.ca

**NAI Commercial**





**VANCOUVER CITY CENTRE**

**GRANVILLE**

**PACIFIC CENTRE**

**ROBSON SQUARE**

**605 ROBSON**

**LAW COURTS**

**ORPHEUM**

**ROBSON ST**

**VANCOUVER PUBLIC LIBRARY**

**WITHIN 5-MIN WALKING DISTANCE**

- Five Guys
- Meat & Bread
- Blenz Coffee
- Aladdin Café
- Guu Japanese
- Bahar Bakery & Cafe
- H-Mart
- Cafe Monet Bakery
- Tractor Foods
- JINYA Ramen
- JAPADOG
- CIBC Bank
- The Ox Pub
- Chipotle Mexican
- Jollibee
- Starbucks
- Tim Hortons
- Glowbal
- London Drugs
- Pacific Centre
- Hudson's Bay
- Popeyes
- McDonald's
- Dublin Calling Bar
- Staples
- Fable Diner & Bar
- Cafe Medina
- Viet Sub Vietnamese
- Falafel King
- Paramount Fine Foods
- Gong Cha
- Taf's Cafe
- The Fountainhead Pub

**Roy Gibbs, LL.B**  
 Personal Real Estate Corporation  
 Commercial Leasing & Sales  
 778 834 4050  
 rgibbs@naicommercial.ca

**Chris Oteman, B.Sc.**  
 Commercial Leasing & Sales  
 604 828 0535  
 coteman@naicommercial.ca



No warranty or representation, express or implied, is made as to the accuracy of the information contained herein, and the same is submitted subject to errors, omissions, change of price, rental or other conditions, prior sale, lease or financing, or withdrawal without notice, and of any special listing conditions imposed by our principals no warranties or representations are made as to the condition of the property or any hazards contained therein are any to be implied. Aerial image(s) courtesy of Google, Landsat/Copernicus

**NAI Commercial**  
 1075 W Georgia St, Suite 1300  
 Vancouver, BC V6E 3C9  
 +1 604 683 7535  
 naicommercial.ca