

# SUITE 380

±1,767 SF | AVAILABLE NOW

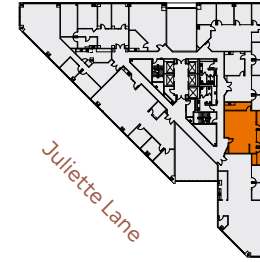
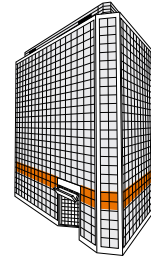
1 Conference Room

2 Private Offices

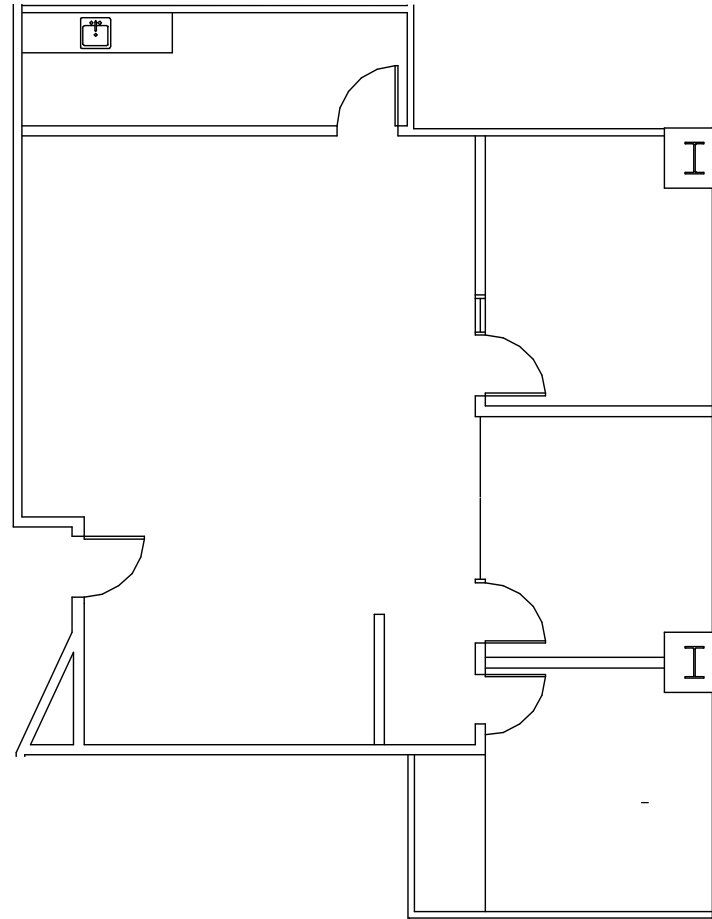
Break Room

Open Area For 4 Workstations

Market Ready



MISSION  
CITY CENTER



## SEAN TOOMEY

+1 408 219 8858  
sean.toomey@jll.com  
RE Lic#: 01350215

## MARYJANE BENGIVENO

+1 408 856 5622  
maryjane.bengiveno@jll.com  
RE Lic#: 0220114

## TOSS VALLENTINE

+1 650 213 2172  
toss.valentine@jll.com  
RE Lic#: 01742629

