

# 1000 WOODBURY

1000 WOODBURY ROAD, NEW YORK, NY, 11797



NEW OWNERSHIP \ NEW VISION \ NEW SPACES

## NEW PRE-BUILT

### » SUITE 401

Newly constructed, immediate occupancy pre-built office space totaling 3,124 RSF, thoughtfully designed with modern finishes and a highly efficient layout.



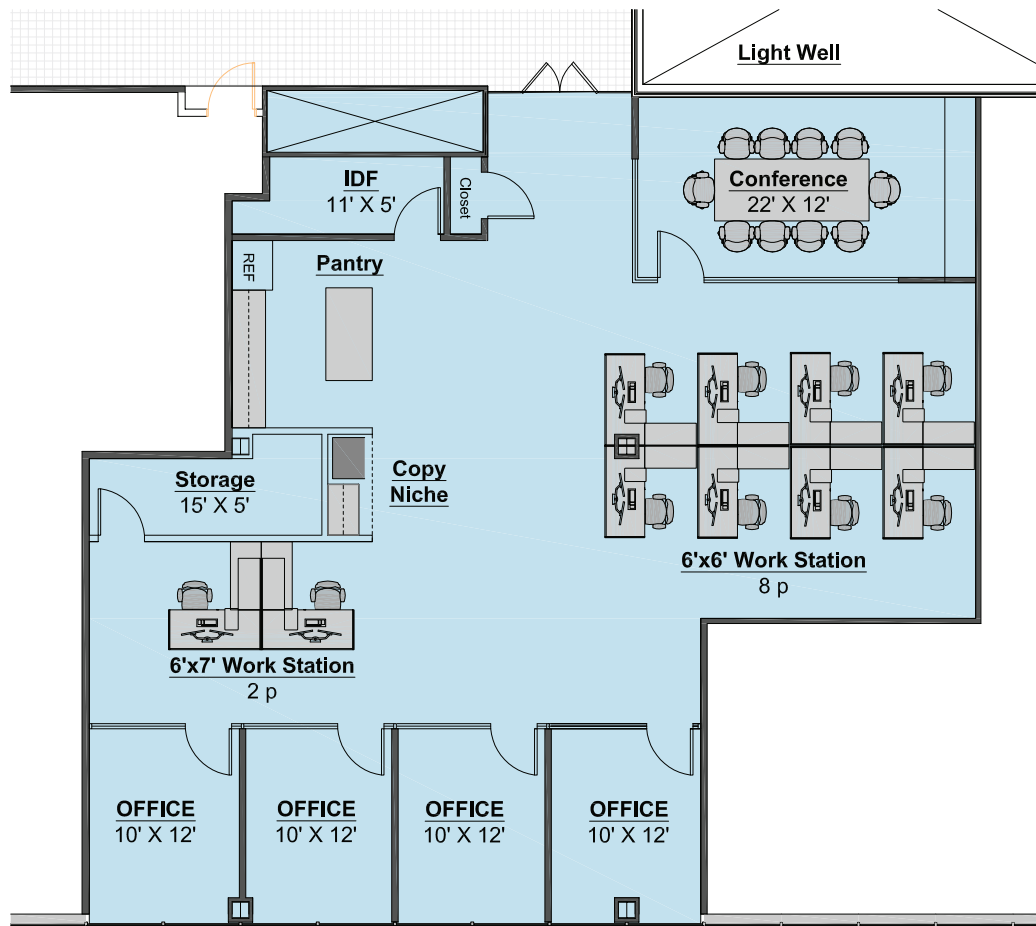
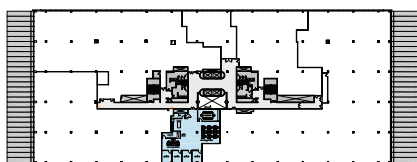
### BUILDING OVERVIEW

- Gross Building Area 283,760 SF
- Four (4) floors with one lower level below-grade
- Conference room with flexible setups for ±100, 50, or 35 guests, featuring a fully equipped A/V technology suite
- Nearest LIRR Station – Syosset 1.9 miles
- 4 passenger + 1 freight elevator
- Dedicated telecom infrastructure throughout

### BUILDING AMENITIES

- Full Service Café
- Conferencing Center
- Fitness Center
- Golf Simulator Lounge
- Training Room (newly renovated)
- Building Upgrades Underway

# Floor Plan \ \ Suite 401



OWNERSHIP

**TKF Burnside**  
REAL ESTATE PARTNERS

**NEWMARK**

FOR LEASING CONTACT

**Brian Lee**

Principal/ Executive Managing Director

t 516-487-7770

brian.lee@nrmk.com

Scan to  
Download  
Brochure



The information contained herein has been obtained from sources deemed reliable but has not been verified and no guarantee, warranty or representation, either express or implied, is made with respect to such information. Terms of sale or lease and availability are subject to change or withdrawal without notice.

©2026 Newmark. All Rights Reserved.