

# GARLAND MEDICAL PLAZA

7150 N President George Bush Hwy | Garland, TX 75044

THE  
RMR  
GROUP



Leasing Information:  
214.461.2302

**Peter Shaw**  
214.461.2302  
pshaw@lpc.com

**Zoë Mysing**  
504.982.5799  
zmysing@lpc.com

**Banks Newton**  
214.461.2388  
bnewton@lpc.com

# Lincoln

Lincoln Property Company  
8140 Walnut Hill Lane Suite 700  
Dallas, TX 75231

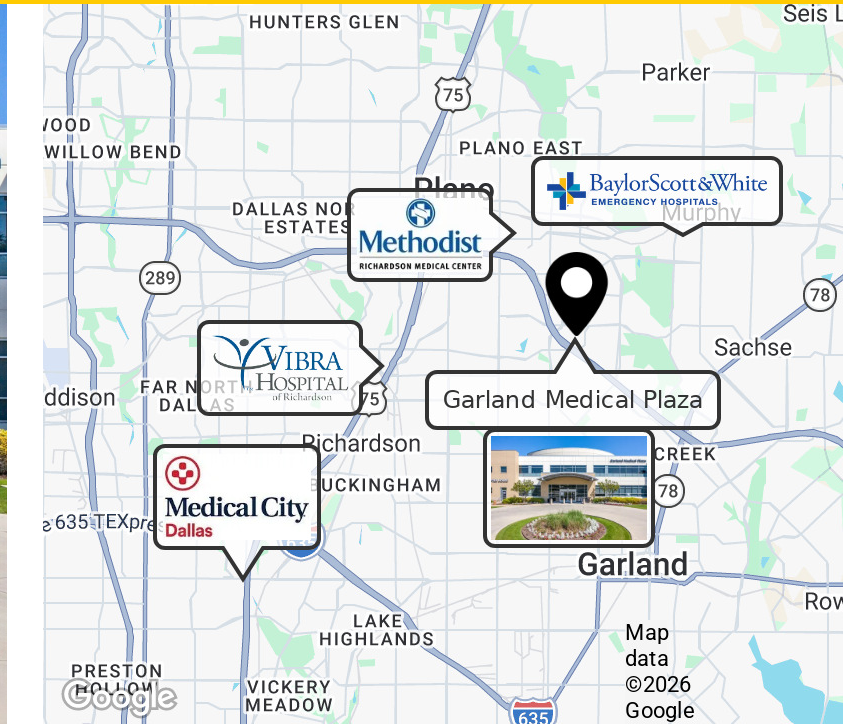
[www.lpc.com](http://www.lpc.com)

# GARLAND MEDICAL PLAZA

7150 N President George Bush Hwy | Garland, TX  
75044

## Medical Office For Lease

1,521 - 2,796 SF



### Property Highlights

- Anchored by multi-specialty surgery center
- Synergistic mix of clinical specialties affords potential referral opportunities
- Monument signage available
- 6/1000 parking ratio
- Excellent highway access
- Professionally managed
- Potential for 1st floor building signage
- Greenbelt behind the building

### Property Overview

7150 N President George Bush Hwy, Garland, TX, 75044 presents a prime leasing opportunity. Anchored by a multi-specialty surgery center, this property features a synergistic blend of clinical specialties, excellent highway access, and a generous parking ratio of 6 spaces per 1,000 square feet. Additionally, there is potential for prominent first-floor signage and a serene greenbelt located behind the building.

### Availabilities

Suite 100  
Suite 103

### SF

2,796 SF  
1,521 SF

**Peter Shaw**

214.461.2302  
PShaw@lpc.com

**Zoë Mysing**

504.982.5799  
zmysing@lpc.com

**Banks Newton**

214.461.2388  
bnewton@lpc.com

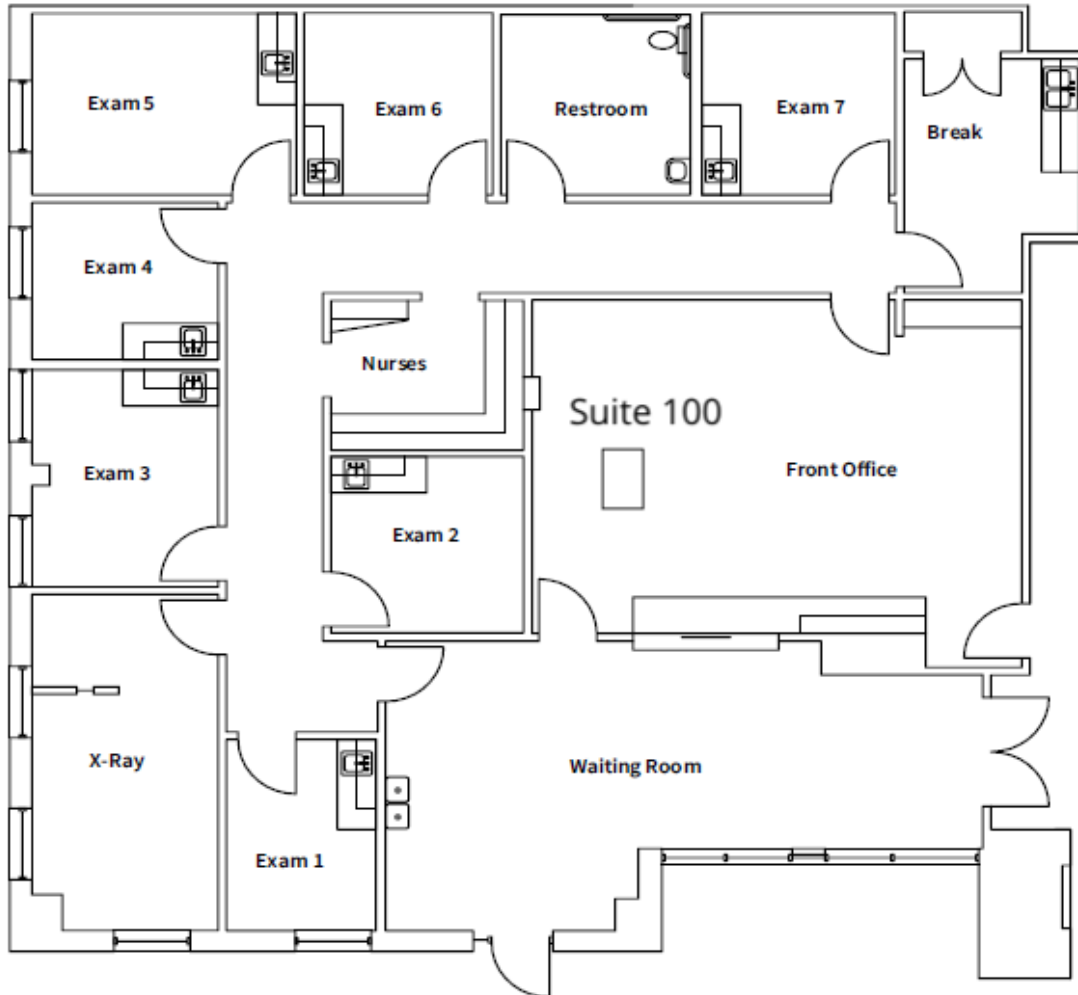
**Lincoln**

# GARLAND MEDICAL PLAZA

7150 N President George Bush Hwy | Garland, TX 75044

Suite 100

2,796 SF



## Suite

Suite 100

## Size

2,796 SF

**Peter Shaw**

214.461.2302  
PShaw@lpc.com

**Zoë Mysing**

504.982.5799  
zmysing@lpc.com

**Banks Newton**

214.461.2388  
bnewton@lpc.com

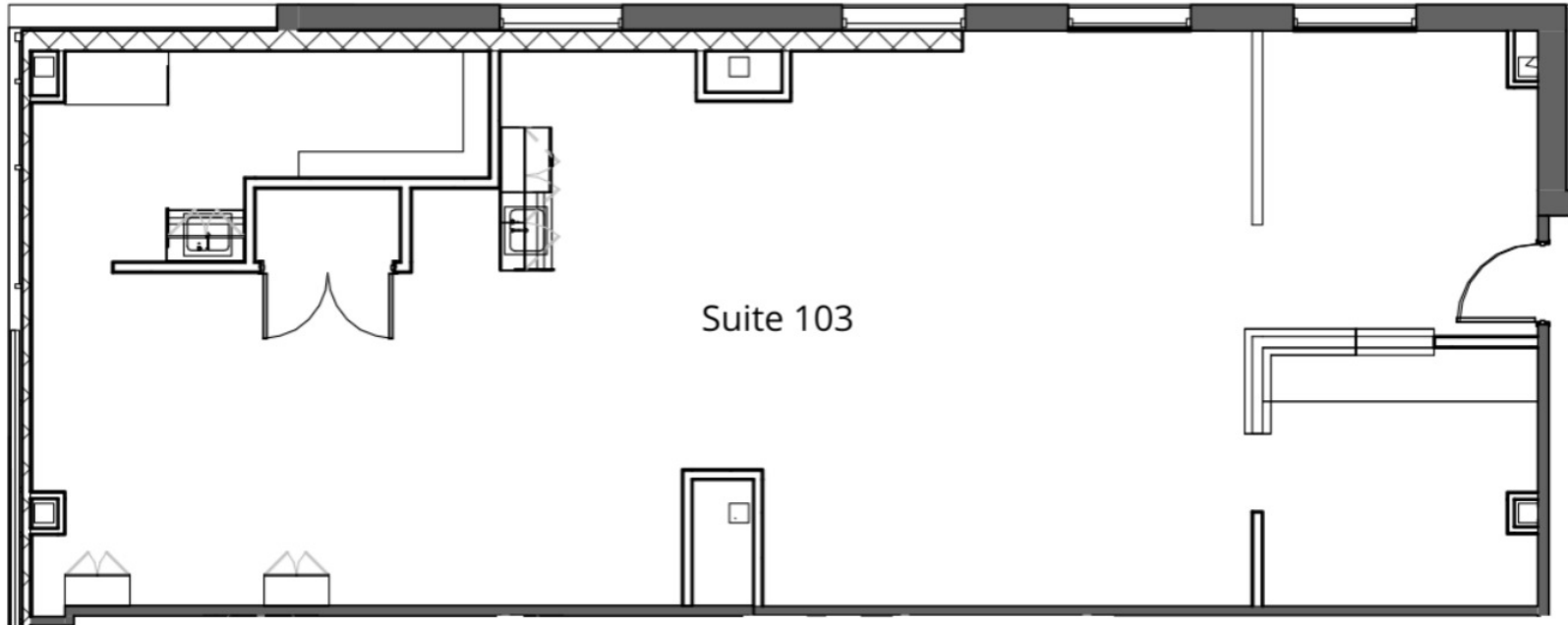
**Lincoln**

# GARLAND MEDICAL PLAZA

7150 N President George Bush Hwy | Garland, TX 75044

Suite 103

1,521 SF



Suite 103

**Suite**

**Size**

Suite 103

1,521 SF

**Peter Shaw**

214.461.2302  
PShaw@lpc.com

**Zoë Mysing**

504.982.5799  
zmysing@lpc.com

**Banks Newton**

214.461.2388  
bnewton@lpc.com

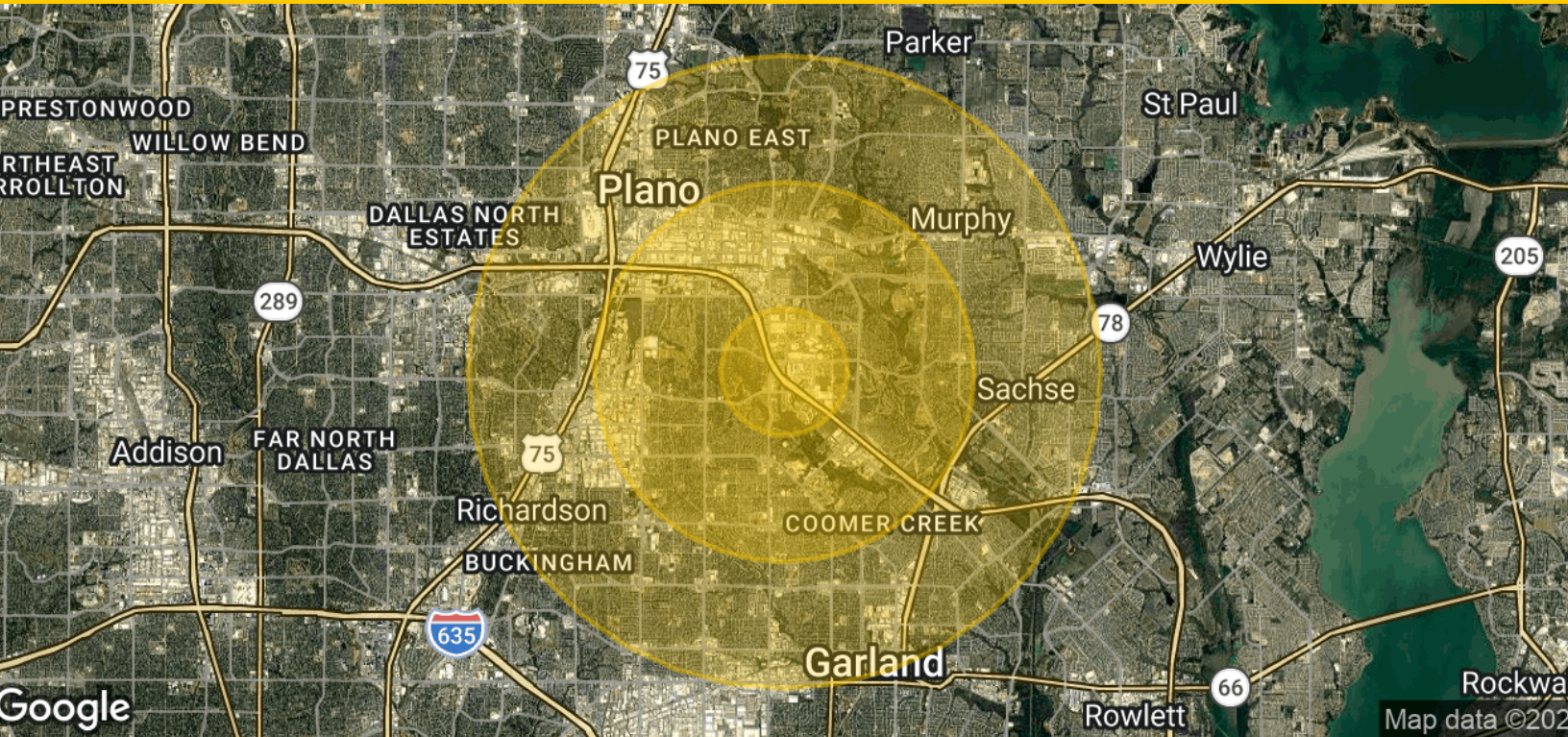
**Lincoln**

# GARLAND MEDICAL PLAZA

7150 N President George Bush Hwy | Garland, TX 75044

## Demographics Map & Report

1,521 - 2,796 SF



Population	1 Mile	3 Miles	5 Miles
Total Population	9,827	106,278	302,359
Average Age	40	40	39
Average Age (Male)	39	39	38
Average Age (Female)	41	41	40
Households & Income	1 Mile	3 Miles	5 Miles
Total Households	4,247	41,313	109,644
# of Persons per HH	2.3	2.6	2.8
Average HH Income	\$124,882	\$123,554	\$122,861
Average House Value	\$418,953	\$396,450	\$395,921

Demographics data derived from AlphaMap

**Peter Shaw**      **Zoë Mysing**      **Banks Newton**  
 214.461.2302      504.982.5799      214.461.2388  
 PShaw@lpc.com      zmysing@lpc.com      bnewton@lpc.com



# GARLAND MEDICAL PLAZA

7150 N President George Bush Hwy | Garland, TX 75044

Property Amenities

1,521 - 2,796 SF



**Peter Shaw**

214.461.2302  
PShaw@lpc.com

**Zoë Mysing**

504.982.5799  
zmysing@lpc.com

**Banks Newton**

214.461.2388  
bnewton@lpc.com

**Lincoln**



# GARLAND MEDICAL PLAZA

7150 N President George Bush Hwy  
Garland, TX 75044

Leasing Information:  
214.461.2302

**Peter Shaw**

214.461.2302  
pshaw@lpc.com

**Zoë Mysing**

504.982.5799  
zmysing@lpc.com

**Banks Newton**

214.461.2388  
bnewton@lpc.com

# Lincoln

Lincoln Property Company  
8140 Walnut Hill Lane Suite 700  
Dallas, TX 75231

[www.lpc.com](http://www.lpc.com)