

**For Lease 8325 - 8339 Nieman Rd Overland Park, KS 66214**  
**Brookhollow Building 4 Multi-Tenant Flex Industrial**  
**3,052 - 21,157 SF Available - Rent Starting at \$10.00 + 5.50 NNN**



- **Up to 21,157 SF Available**
- **Multiple Open Suites**
- **Fenced and Gated Back Parking Lot With Truck Accessibility**
- **Dock Doors High Door in Each Suite**
- **16' Clear Height**
- **Easy Access to I-35 & 69-Highway**



**Josh Haith**  
**Josh@Haith.com**  
**O: (913) 888-3456 x 7**  
**www.Haith.com**



**Jake Lafevers**  
**Jake@Haith.com**  
**O: (913) 888-3456**  
**M: (816-642-7287)**

**For Lease 8325 - 8339 Nieman Rd Overland Park, KS 66214**  
**Brookhollow Business Park Building 4 - Floorplans and Layout**



	<b>8325</b>	<b>3,052 SF</b>
	<b>Leased 3 years 8327</b>	<b>3,052 SF</b>
	<b>8329</b>	<b>3,052 SF</b>
	<b>8331 8333</b>	<b>6,105 SF</b>
	<b>8335 8337</b>	<b>8,326 SF</b>
	<b>Leased MtM 8339</b>	<b>622 SF</b>

# For Lease 8325 - 8339 Nieman Rd Overland Park, KS 66214

## Brookhollow Business Park Building 4 - 8325 & 8329

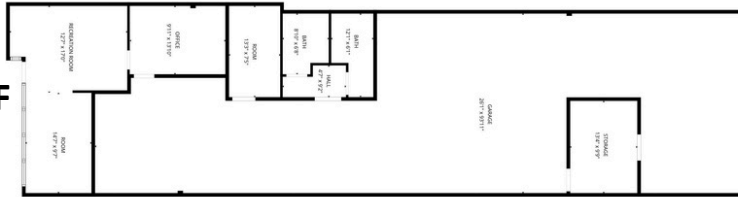
### 8325

3,052 SF



### 8329

3,052 SF



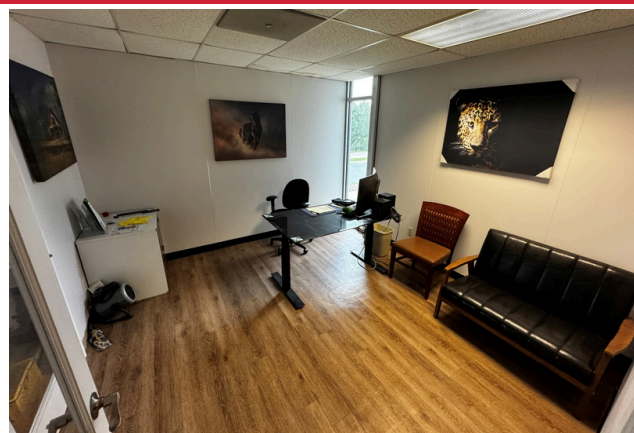
Josh Haith  
Josh@Haith.com  
O: (913) 888-3456 x 7  
www.Haith.com



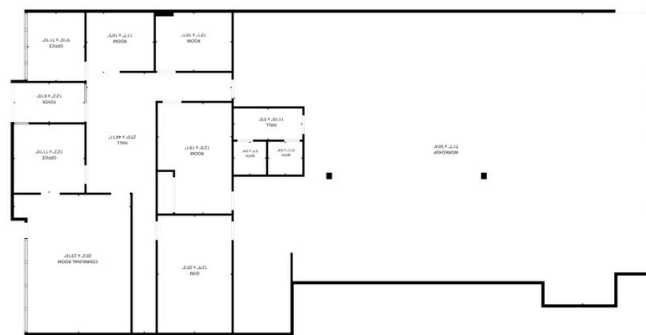
Jake Lafavers  
Jake@Haith.com  
O: (913) 888-3456  
M: (816-642-7287)

**For Lease 8325 - 8339 Nieman Rd Overland Park, KS 66214  
Brookhollow Business Park Building 4 - 8331-8337**

**8331-8333**



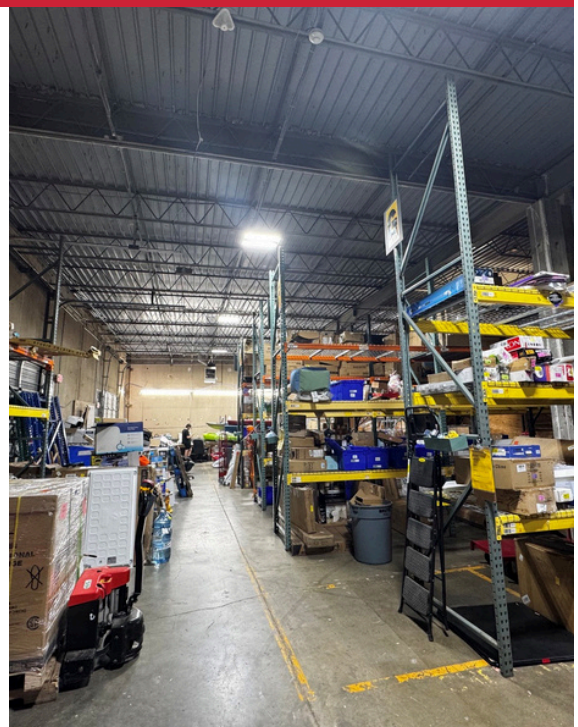
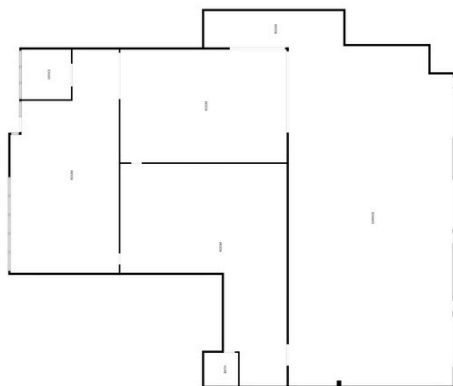
**6105 SF**



**8335-8337**



**8326 SF**

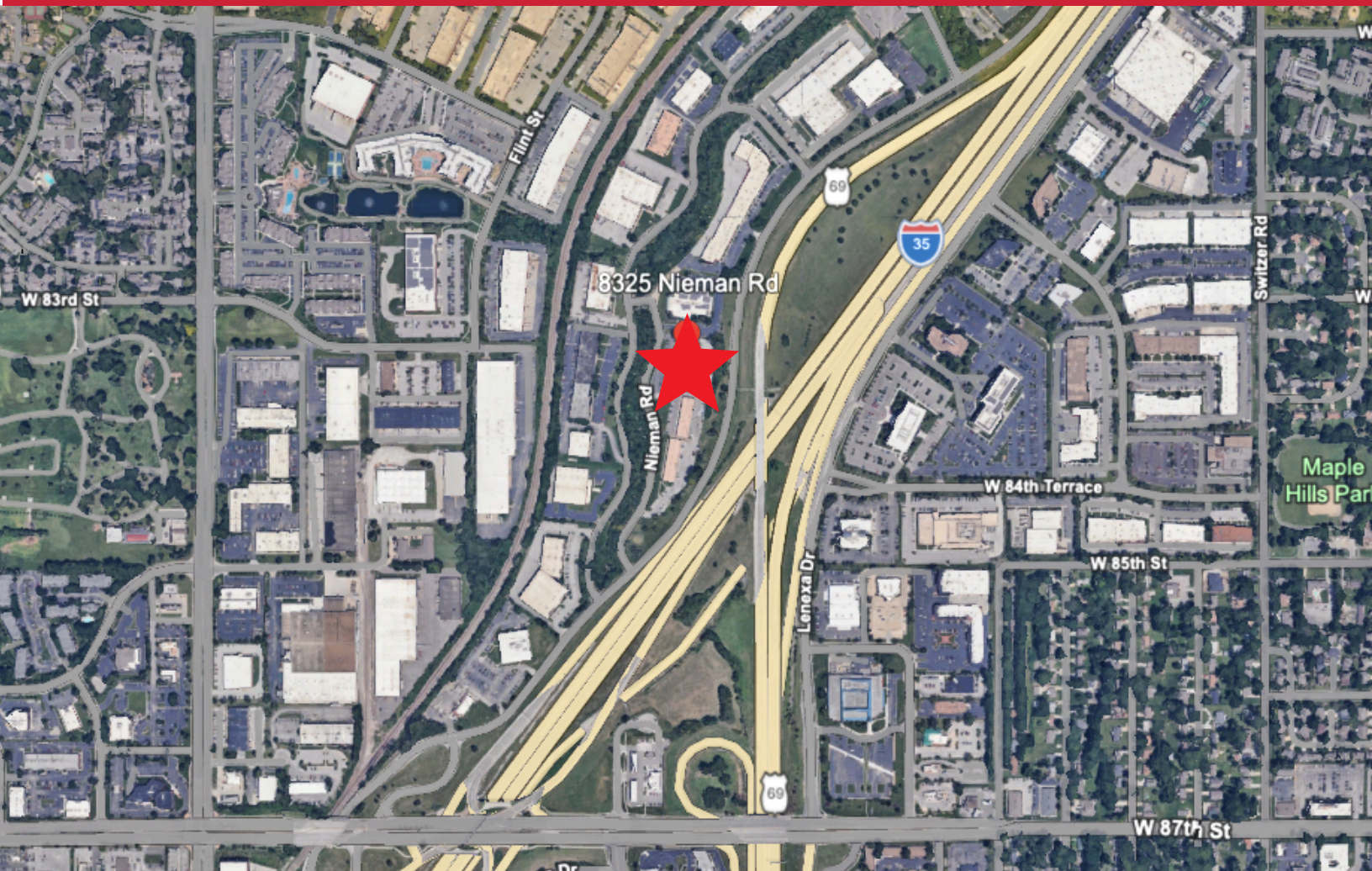


**Josh Haith  
Josh@Haith.com  
O: (913) 888-3456 x 7  
www.Haith.com**



**Jake Lafevers  
Jake@Haith.com  
O: (913) 888-3456  
M: (816-642-7287)**

**For Lease 8325 - 8339 Nieman Rd Overland Park, KS 66214**  
**Brookhollow Business Park Building 4 - Map View**



**Excellent Location at I-35 & 69 Highway**

<b>69 Highway</b>	<b>1 Mile</b>
<b>I-35</b>	<b>1 Mile</b>