

FOR LEASE

Owned and Operated by 

Westpark Distribution Center

1825 Westpark Drive, Suite 200, Grand Prairie, TX 75050

±43,754 SF



Building Features

43,754 SF Available for Lease

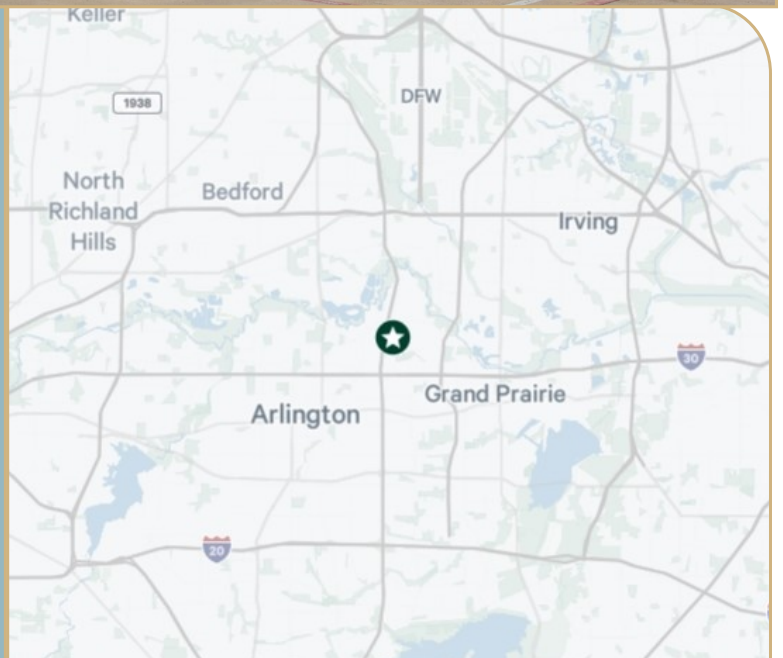
2,870 SF Office

25' Clear Height

(6) 10x10 Dock Doors (3 Levelers)

(1) Drive-In Ramp

(1) 12x12 Grade Level Drive-In Dock



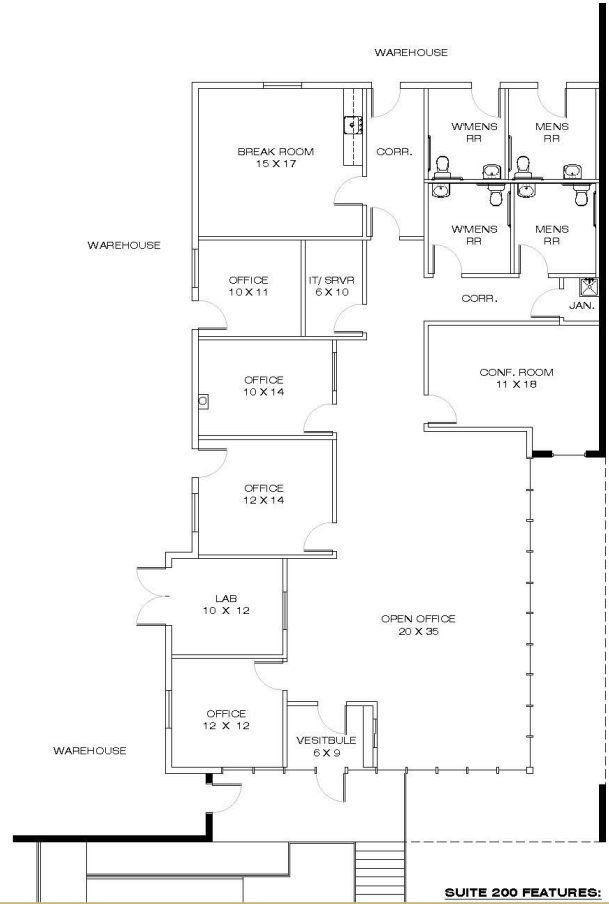
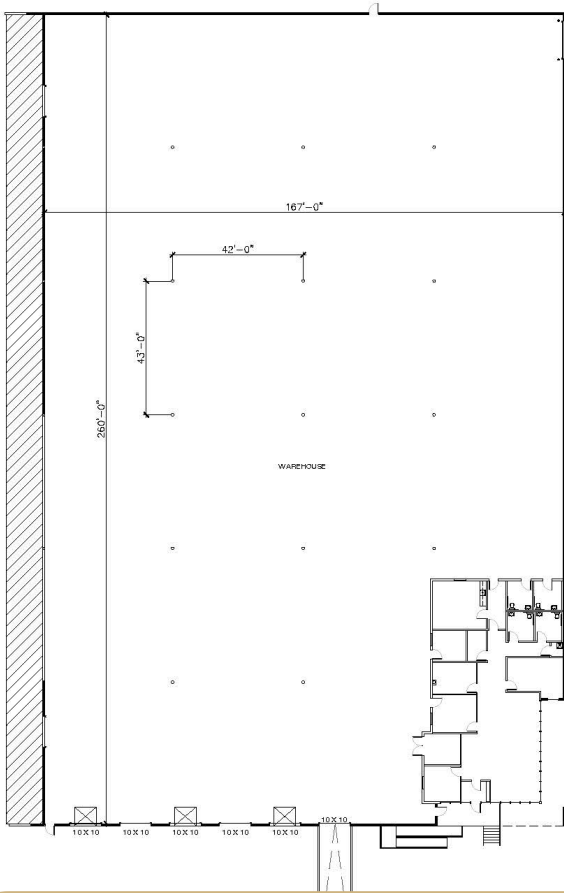
**LEASING INFO
& CONTACT**

Steve Koldyke
Brian Gilchrist

(214) 979-6381 / steve.koldyke@cbre.com
(214) 979-6394 / brian.gilchrist@cbre.com

CBRE

Site Plan



SUITE 200 FEATURES:

Location

