



# OFFICE/RETAIL SPACE FOR LEASE

## PALATINE CENTRE 3-47 E NORTHWEST HWY, PALATINE, IL



### BUILDING FEATURES:

- 207-459 SF Available Immediately For Lease
- Located on Northwest Hwy with Excellent Exposure
- Easy Access to Route 53/I-90 via Northwest Hwy
- Center is Anchored by Quest Academy, an Elementary School Serving Approximately 300 Students

- Motivated Ownership Group
- Great Layouts for Immediate Occupancy
- Dedicated entry for office suites
- **Rental Rate on Office Suites See Below**
- **\*\*\*All Office Suites Include Utilities & Janitorial**
- Visit [www.chicagolandcommercial.com](http://www.chicagolandcommercial.com) for 3-D Virtual Tours for Each Space!

### AVAILABLE RETAIL SPACE:

Suite Size (SF)

23-25 2,819 SF \$19.75 PSF Modified Gross Restaurant Space.

Furniture, fixtures & equipment available for purchase. Sublease through 3/31/29.

### AVAILABLE OFFICE SPACE:

Suite Size (SF) Monthly Rent

19-3C 450 RSF \$625 Per Month Gross

21-1C 550 RSF \$765 Per Month Gross

- **\*\*\*All Office Suites Include Utilities & Janitorial \*\*\***

### FOR MORE INFORMATION:

RANDY OLCZYK  
Direct: 847.246.9611  
randy@chicagolandcommercial.com

TOM CALLAHAN  
Direct: 847.246.9636  
tom@chicagolandcommercial.com

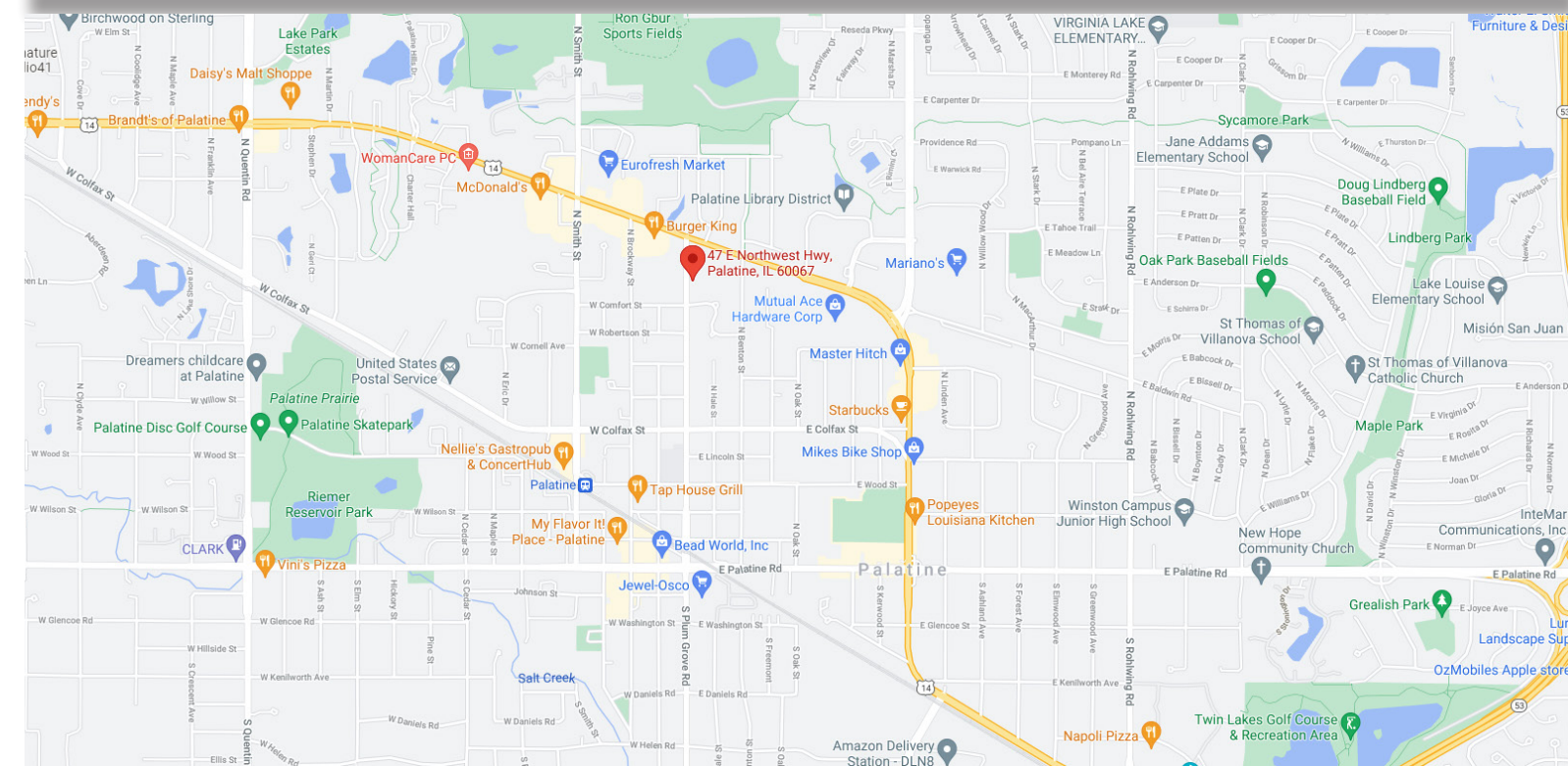
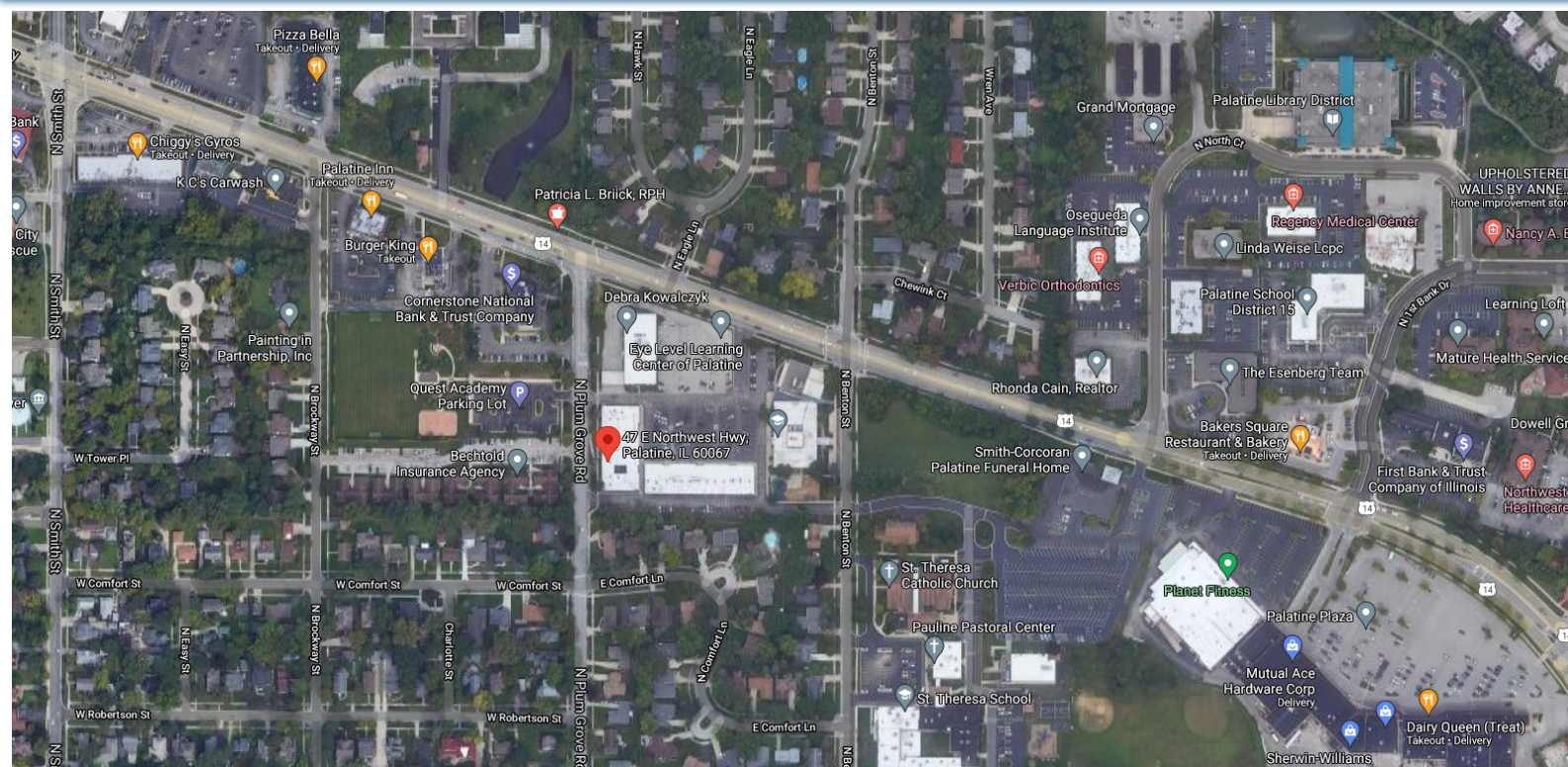


4811 Emerson Ave-Suite 112., Palatine, IL



# OFFICE/RETAIL SPACE FOR LEASE PALATINE CENTRE 3-47 E NORTHWEST HWY, PALATINE

## AREA MAPS



### FOR MORE INFORMATION:

RANDY OLCZYK  
Direct: 847.246.9611  
randy@chicagolandcommercial.com

TOM CALLAHAN  
Direct: 847.246.9636  
tom@chicagolandcommercial.com



4811 Emerson Ave-Suite 112., Palatine, IL



# OFFICE/RETAIL SPACE FOR LEASE

## PALATINE CENTRE 3-47 E NORTHWEST HWY, PALATINE

### OFFICE LOBBY AREA PHOTOS



### FOR MORE INFORMATION:

RANDY OLCZYK  
Direct: 847.246.9611  
randy@chicagolandcommercial.com

TOM CALLAHAN  
Direct: 847.246.9636  
tom@chicagolandcommercial.com



4811 Emerson Ave-Suite 112., Palatine, IL

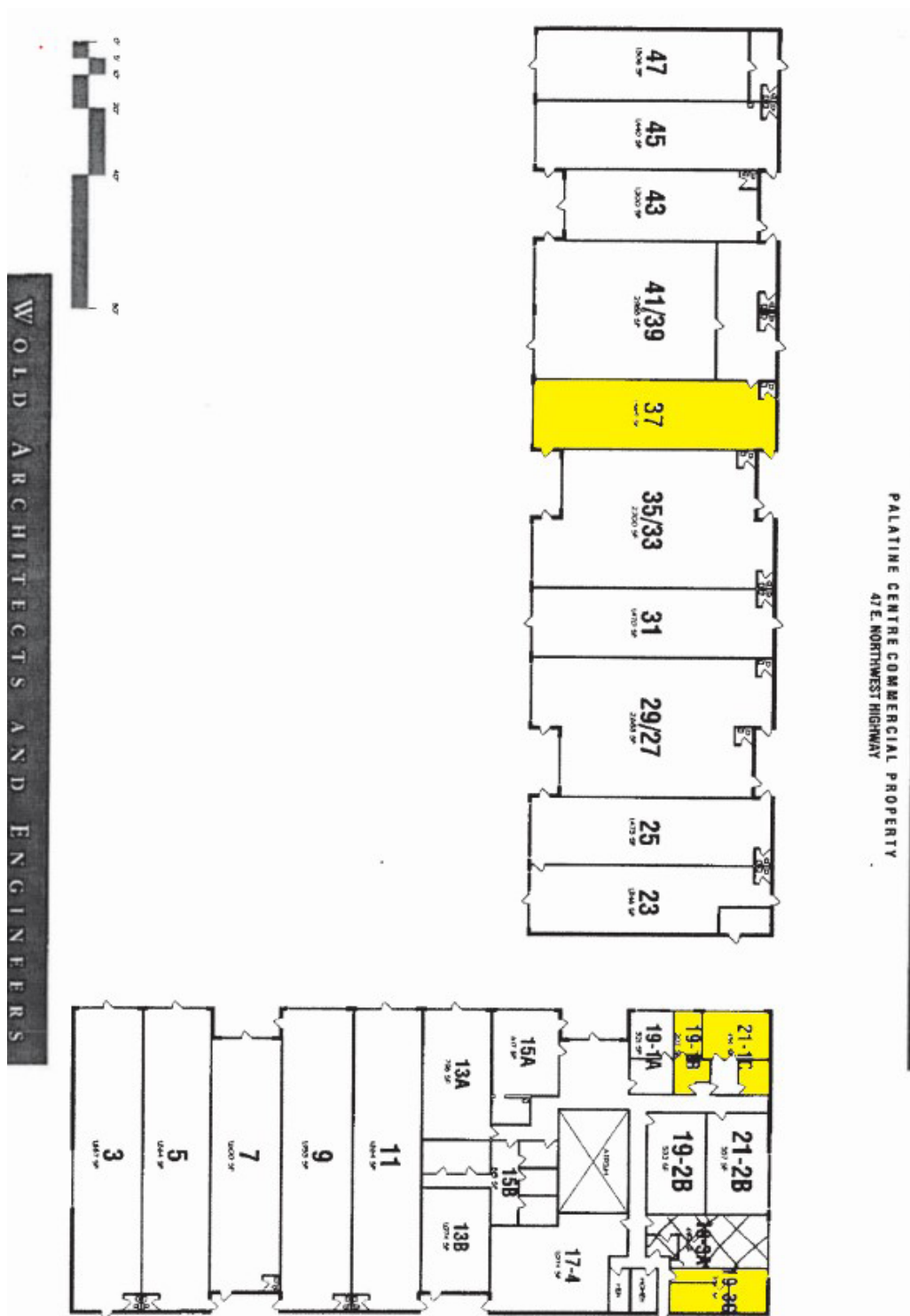
LEASING | SALES | TENANT ADVISORY | MANAGEMENT

[www.chicagolandcommercial.com](http://www.chicagolandcommercial.com)



# OFFICE/RETAIL SPACE FOR LEASE PALATINE CENTRE 3-47 E NORTHWEST HWY, PALATINE

## SITE PLAN



### FOR MORE INFORMATION:

RANDY OLCZYK  
Direct: 847.246.9611  
randy@chicagolandcommercial.com

TOM CALLAHAN  
Direct: 847.246.9636  
tom@chicagolandcommercial.com



4811 Emerson Ave-Suite 112., Palatine, IL