

3,150 SF AVAILABLE



**260 NEWTOWN ROAD
PLAINVIEW, NY**

OCTOBER 1ST OCCUPANCY




**14' CLEAR
200 AMPS
44% FINISH
(1) DRIVE-IN DOOR**

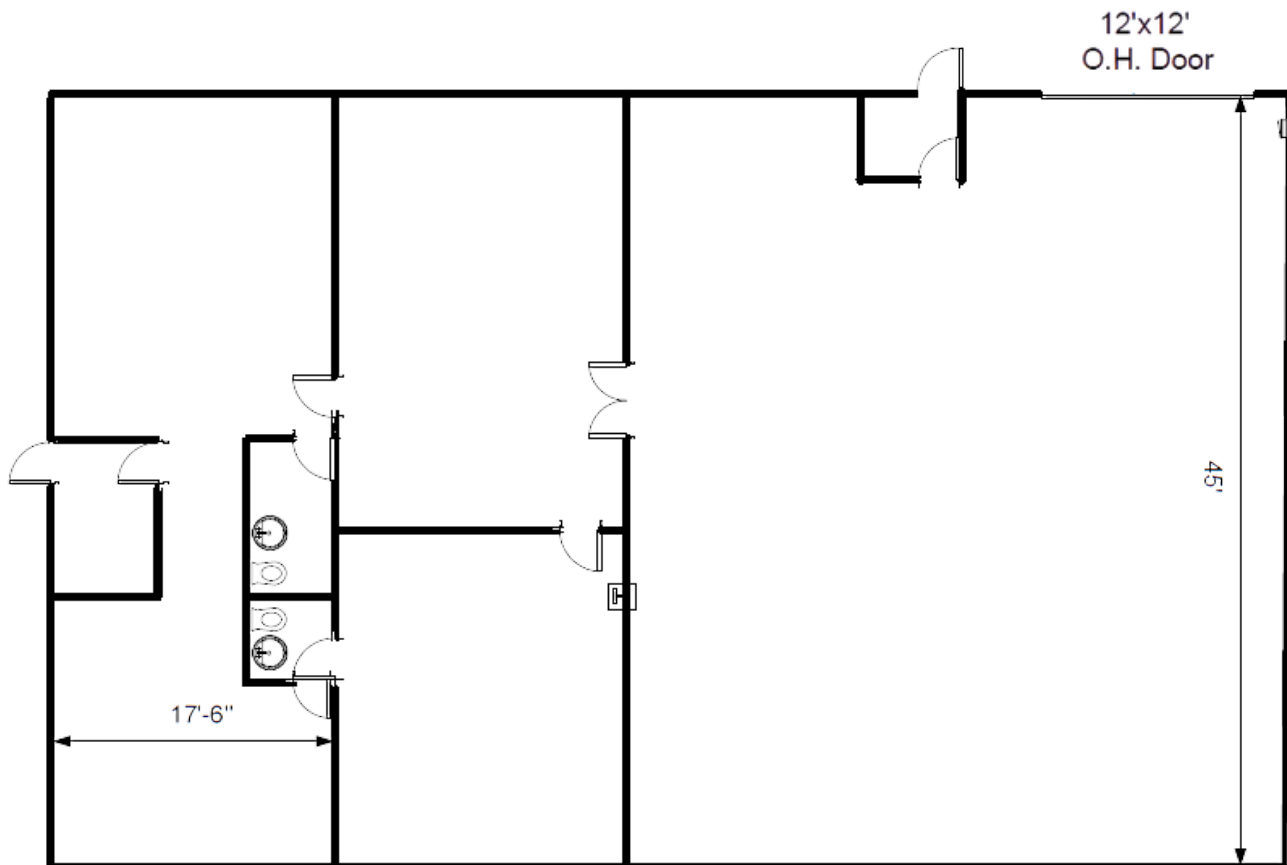
**631-420-0070
DANA@BRENTMAKO.COM
BROKER'S PROTECTED**

260 NEWTOWN ROAD PLAINVIEW, NY 11803

OCTOBER 1ST OCCUPANCY

3,150 SF INDUSTRIAL UNIT

- 14' Clear
- 44% Finish
- AC in Offices
- (1) Drive-in
- (2) Bathrooms
- (1) Private Office
- (2) Large Open Work Areas
- Gas Heat in Warehouse
- Fully Sprinklered
- 200 AMPS / 3-Phase Power
- LED Lighting Throughout
- 0.2 Miles South of I-495 at Exit 48 
- 1 Mile South of Northern State Parkway 
- 1 Mile East of Route 110 
- Multitenant Industrial Building
- Centralized Location For Simplified Commuting and Freight Logistics
- Perfect for Light Manufacturing, Storage or Service Related Use



BRENTMAKO
REAL ESTATE GROUP