

**5010 148TH AVE NE**  
BUILDING B | REDMOND, WA



**FOR LEASE - 20,622-41,828 SF**

# PROPERTY FEATURES

Redmond Woods is a three-building campus, situated on 7.62 acres with immediate access to SR-520. A full building or full floor opportunity is currently available. Redmond Woods is ideal for companies seeking a professional environment with commuter-friendly features and convenient access to major transit corridors.

Located less than one mile from the Redmond Technology Station, the campus offers excellent regional connectivity. Onsite amenities include a walking and biking trail along the north perimeter, bike racks, showers, and locker rooms.

## AVAILABLE SPACE

<b>1ST FLOOR</b>	20,622 SF
------------------	-----------

<b>2ND FLOOR</b>	21,206 SF
------------------	-----------

<b>PARKING</b>	3.36 stalls per 1,000 RSF
----------------	---------------------------

<b>ZONING</b>	OBAT
---------------	------

<b>LEASE RATE</b>	Call Brokers
-------------------	--------------

<b>AVAILABILITY</b>	Immediate
---------------------	-----------

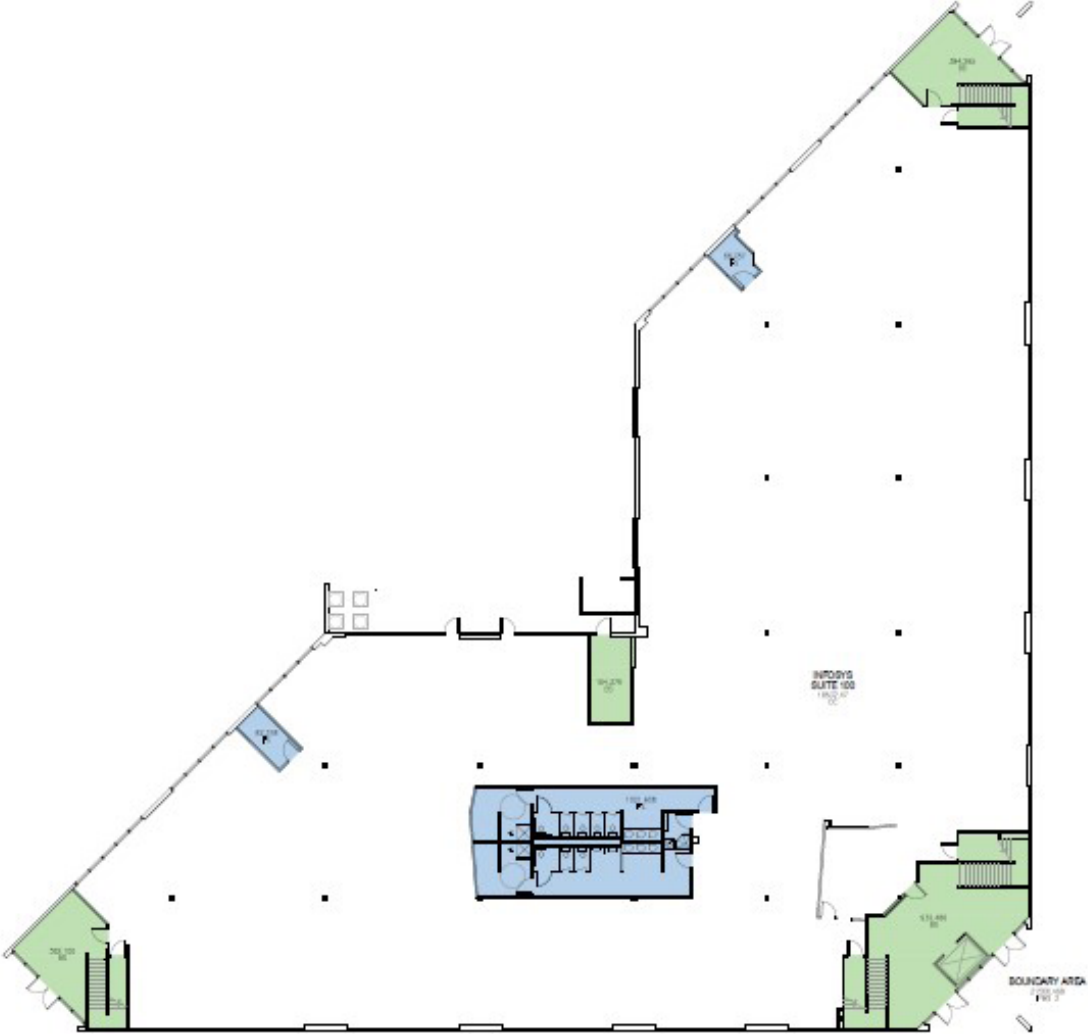


## HIGHLIGHTS

- Building B
- Full building or full-floor opportunity with open tech-style floorplans.
- Immediate access to SR-520
- Less than 1 mile to Redmond Technology Center (Link light rail)
- Professional environment with strong commuter access
- Ample parking

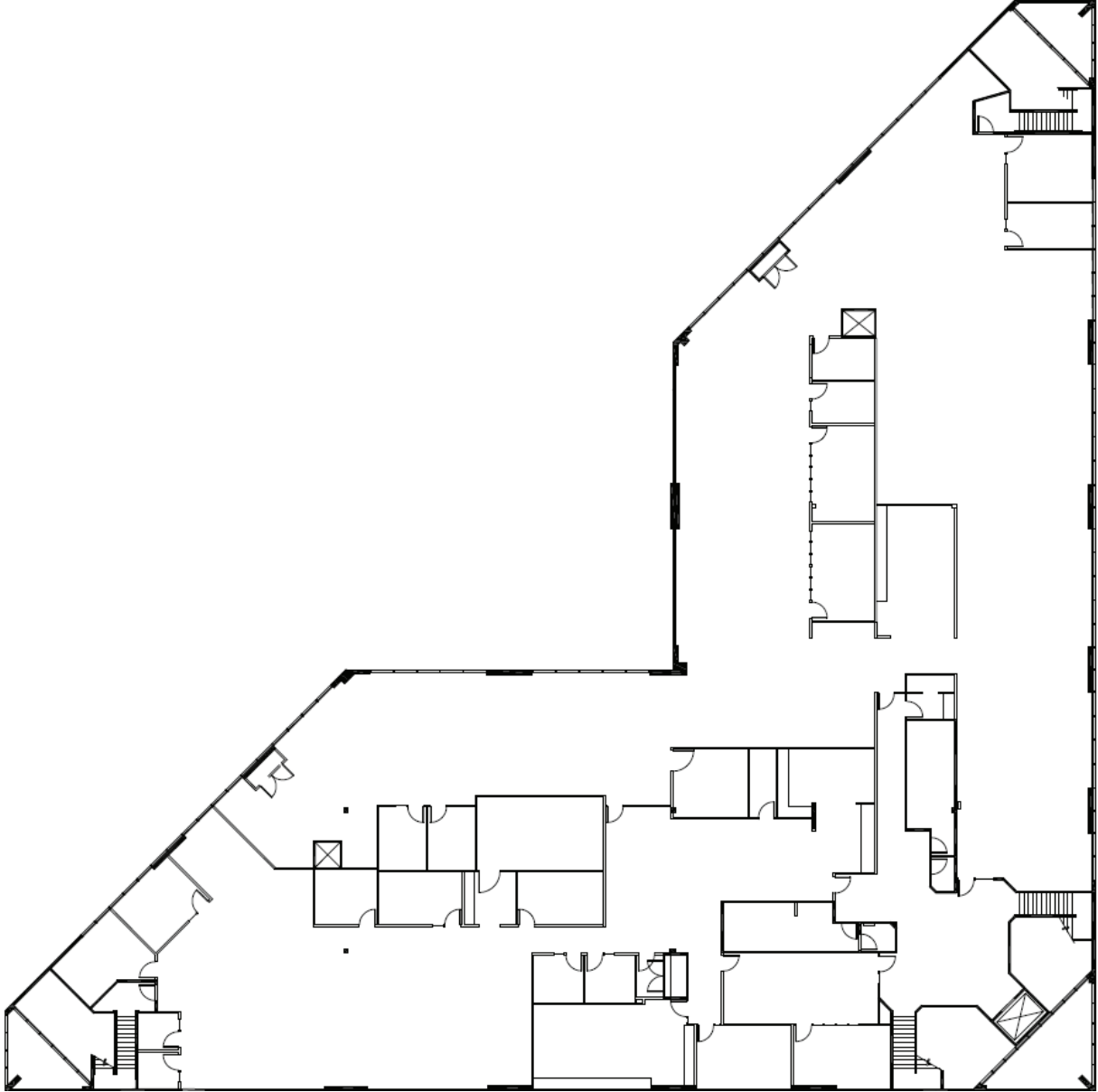
# FLOOR PLAN

1ST FLOOR | 20,622 SF



# FLOOR PLAN

2ND FLOOR | 21,206 SF





**CARSON SCOTT**  
Senior Associate  
+1 206 215 9781  
carson.scott@cushwake.com

**JIM REED, SIOR**  
Executive Managing Director  
+1 425 679 1681  
jim.reed@cushwake.com

Cushman & Wakefield  
601 Union Street, Floor 11  
Seattle, WA 98101  
[cushmanwakefield.com](http://cushmanwakefield.com)