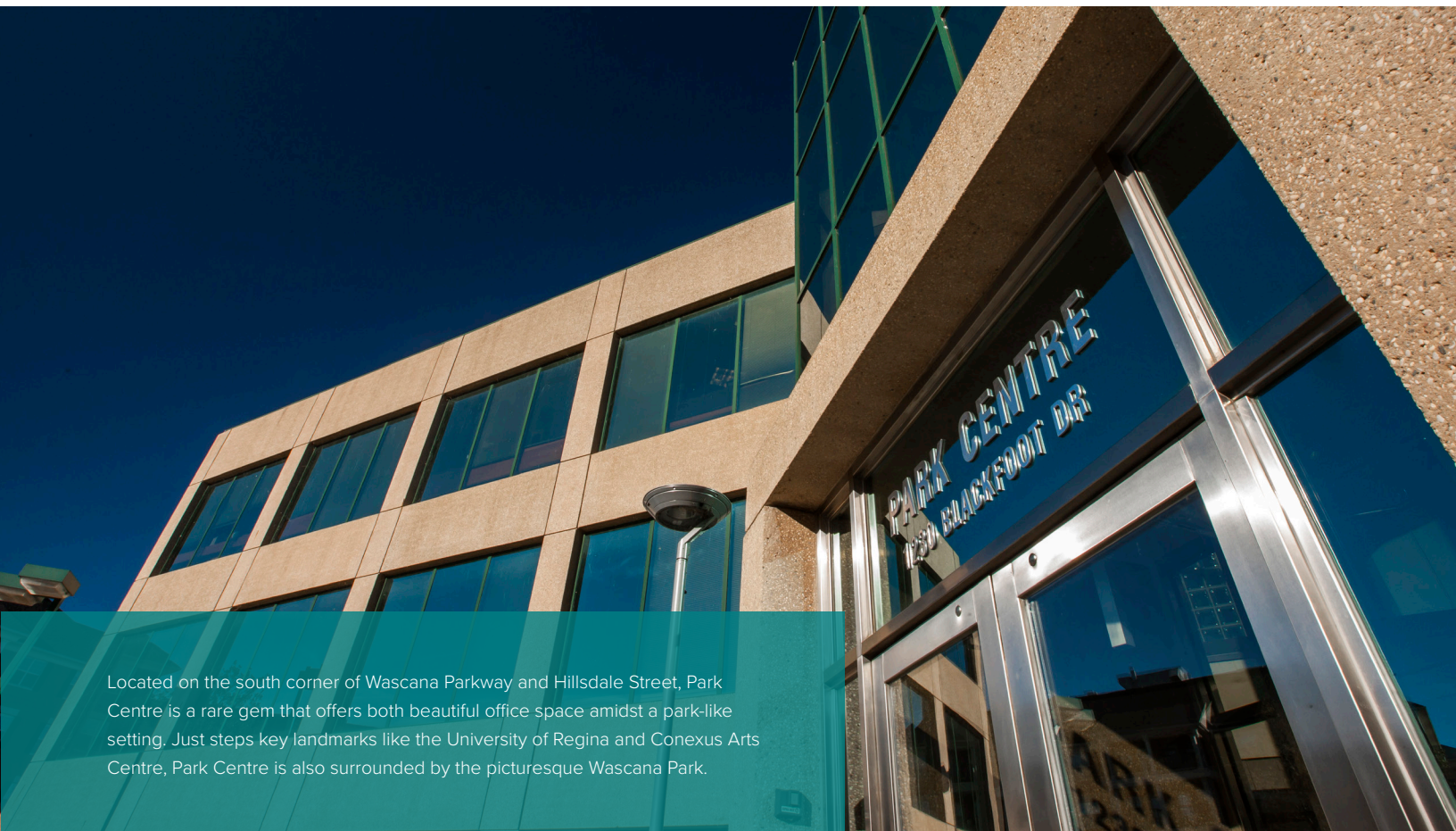


# PARK CENTRE

1230 BLACKFOOT DR. | REGINA, SK



Located on the south corner of Wascana Parkway and Hillsdale Street, Park Centre is a rare gem that offers both beautiful office space amidst a park-like setting. Just steps key landmarks like the University of Regina and Conexus Arts Centre, Park Centre is also surrounded by the picturesque Wascana Park.

## BUILDING HIGHLIGHTS

- Located on the south corner of the intersection of Wascana Parkway and Hillsdale Street.
- Flanked on the North and West by Regina's beautiful Wascana Park.
- Three storey, 53,330 square foot high-end Class B office building.
- Atrium and Terrace design provide a peaceful atmosphere in a park-like setting.
- Underground parking, surface parking, and designated areas for customer parking.
- Major tenants include: TD Greystone Asset Management, Connor Clark and Lunn Private Capital.

## AVAILABLE SPACE

SUITE 100	3,419 SQUARE FEET
SUITE 110	11,391 SQUARE FEET <small>*CAN BE DEMISED</small>
RENTAL RATE   NEGOTIABLE	OP COSTS & PROPERTY TAXES \$14.81 PSF PER ANNUM

### RYANN BRAATEN

LEASING MANAGER, HARVARD REAL ESTATE INC.

T | 306.777.0690 E | rbraaten@harvard.ca

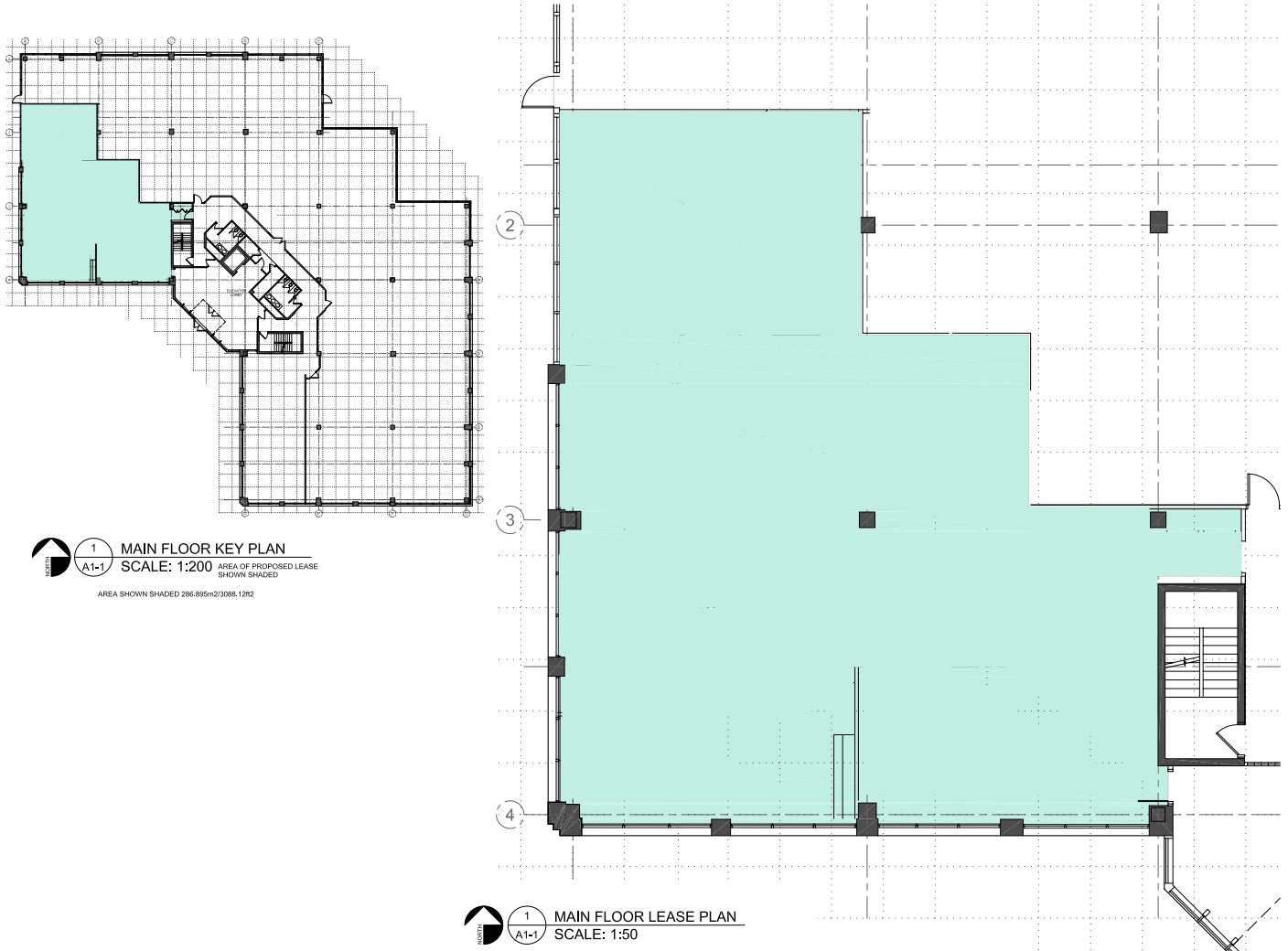
# PARK CENTRE

1230 BLACKFOOT DR. | REGINA, SK

# MAIN FLOOR

# 3,419

SQUARE FEET



AVAILABLE: IMMEDIATELY

**RYANN BRAATEN**

LEASING MANAGER, HARVARD REAL ESTATE INC.

T | 306.777.0690

E | [rbraaten@harvard.ca](mailto:rbraaten@harvard.ca)

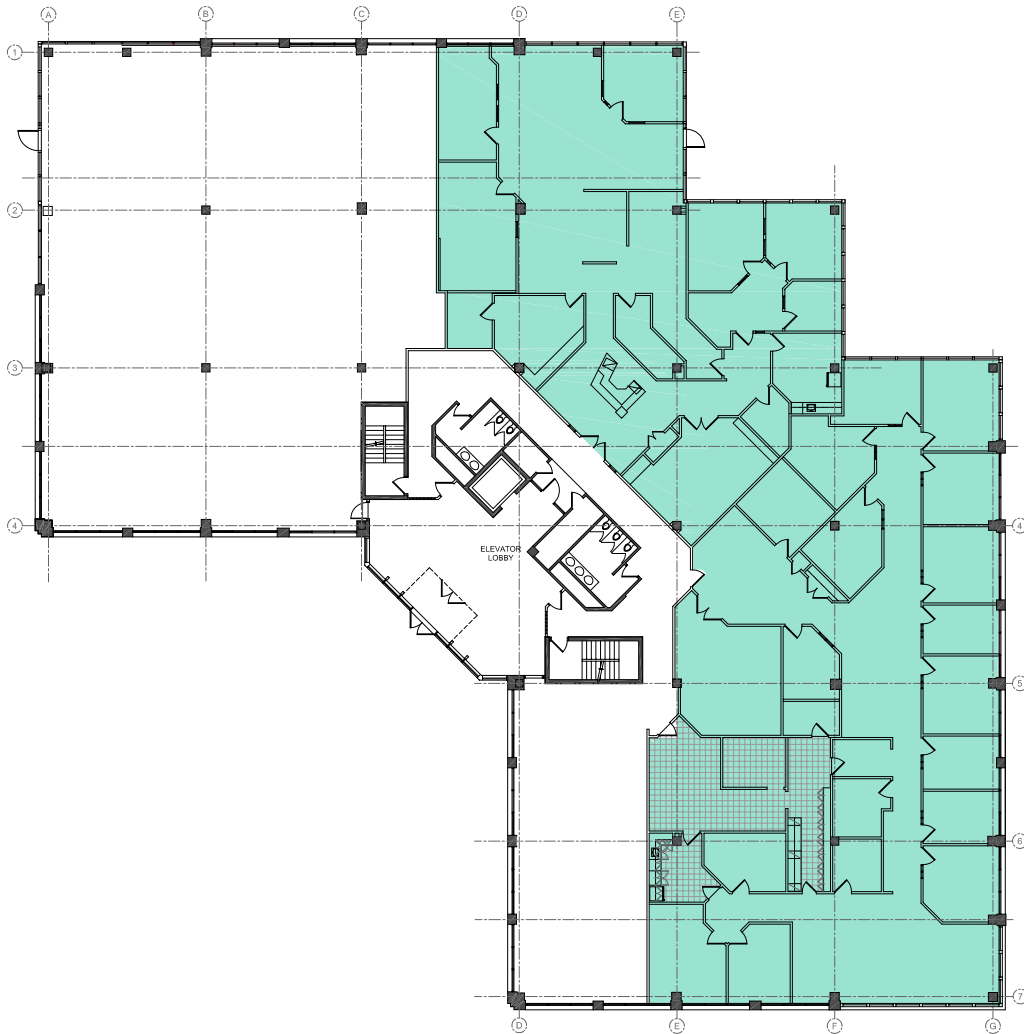
# PARK CENTRE

1230 BLACKFOOT DR. | REGINA, SK

## MAIN FLOOR

11,391

SQUARE FEET



**RYANN BRAATEN**

LEASING MANAGER, HARVARD REAL ESTATE INC.

T | 306.777.0690

E | [rbraaten@harvard.ca](mailto:rbraaten@harvard.ca)