

# 717 Green Valley Road

Greensboro, NC

2,576 – 9,501 SF Leasing Opportunity



As exclusive agent, Dowell Commercial and JLL are pleased to offer the following opportunity.



# 717 Green Valley Road

## Greensboro, NC



**Available Space:** Partial 1<sup>st</sup> (2,576 RSF) & 3<sup>rd</sup> Floor (9,501 RSF) area.

Floor plans for each are available on the following pages.

**Possession:** 1st Floor Space is plug and play. 3<sup>rd</sup> Floor Space is available immediately, though build out will need time for completion.

**Features:**

- Located in the desirable Green Valley Office Park.
- Professional services focused Class A asset.
- In close proximity to retail and service amenities at Friendly Center, Midtown and the active Battleground Avenue corridor.
- Urban meets rural as this building offers a landscaped open lawn and building common patio.

**Asking Rent:** Upon Request



Building Common Exterior Patio



**For more information:**

Sean Dowell, CCIM

Tel: +1 336 378 5067

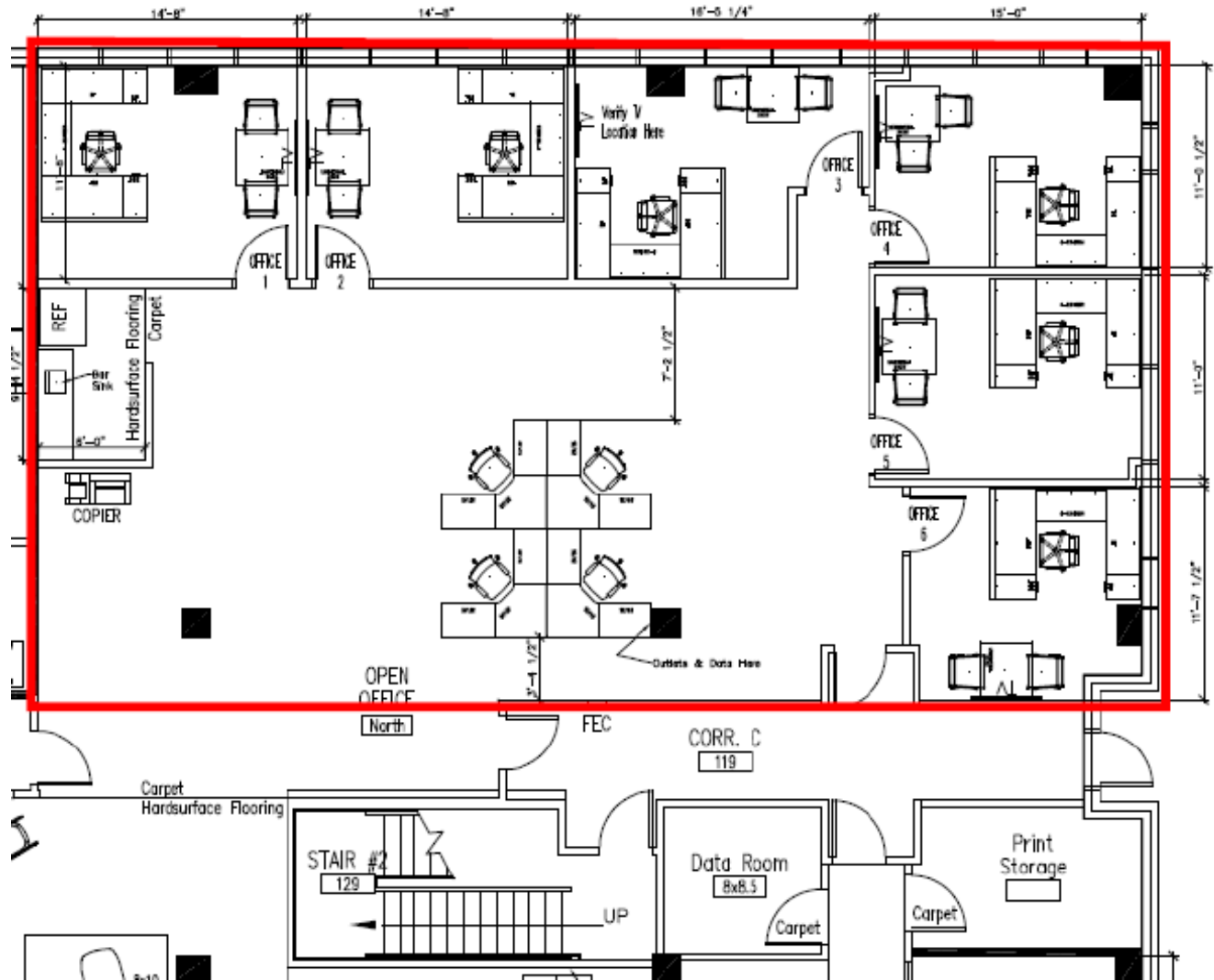
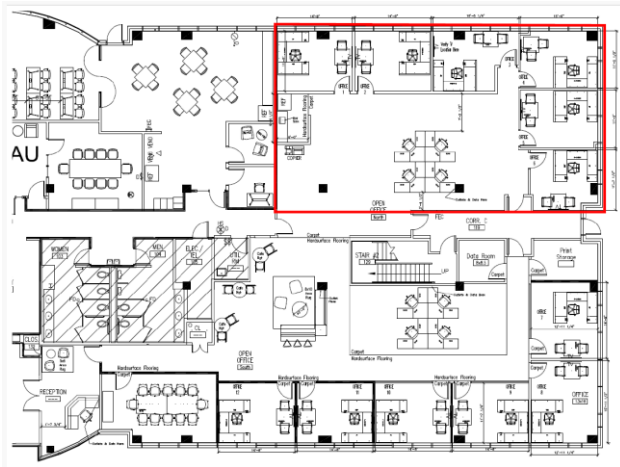
Mob: +1 919 924 4137

[sean@dowellcommercial.com](mailto:sean@dowellcommercial.com)

# 717 Green Valley Road Greensboro, NC

## Floor Plan

Partial 1st Floor  
2,576 RSF  
Available Immediately



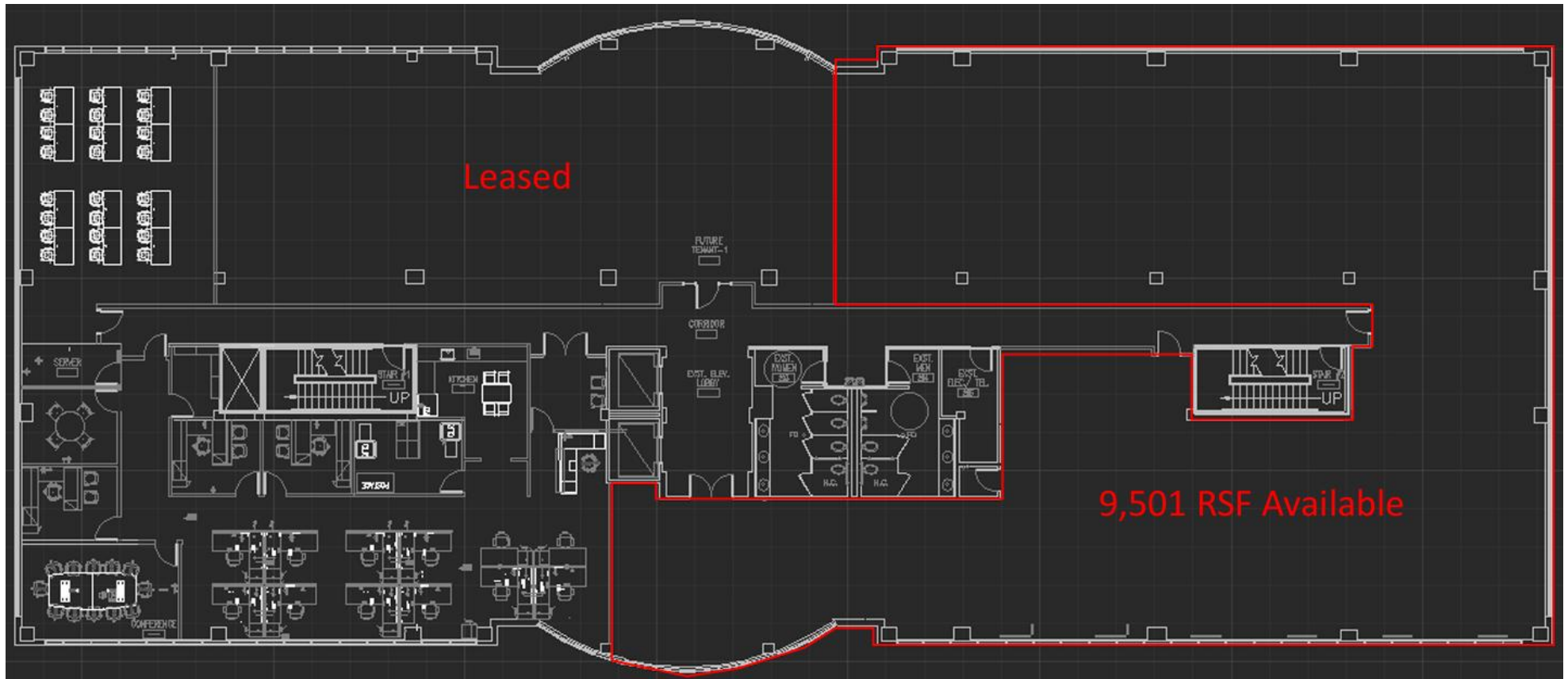
# 717 Green Valley Road

## Greensboro, NC

## Suggested Divisions

Partial 3<sup>rd</sup> Floor

9,501 RSF



### For more information:

Sean Dowell, CCIM

Tel: +1 336 378 5067

Mob: +1 919 924 4137

[sean@dowellcommercial.com](mailto:sean@dowellcommercial.com)

Second generation space ready for new design. Abundant windows overlook the beautifully landscaped property and offers an excess of natural light. Primary top floor location with an access point off in the main elevator lobby. If space needs to be demised, any reasonable division will be considered.