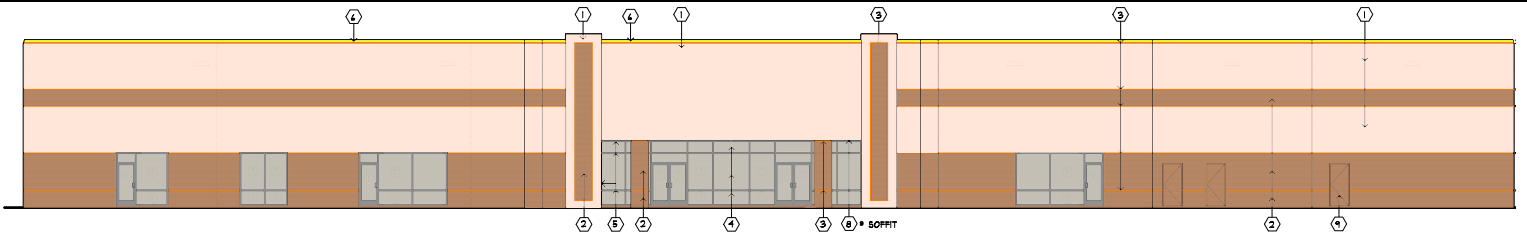


FOR LEASE:

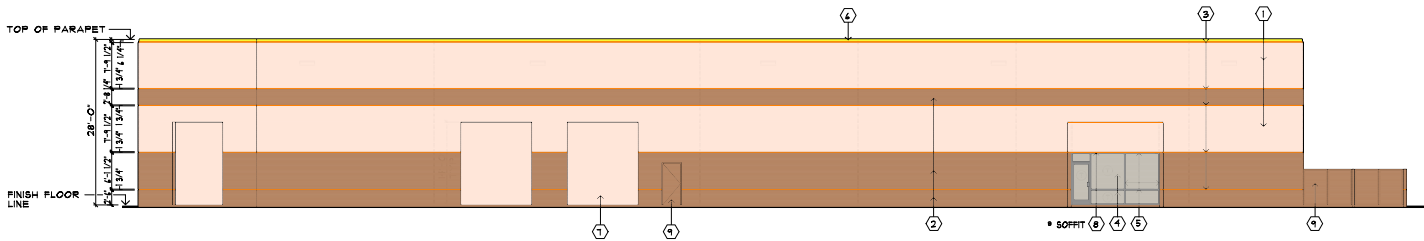
APPROXIMATELY ±27,500 SQUARE FEET ON ±2.53 ACRES

82553 Market Street, Units 100 & 200, Indio, CA 92201



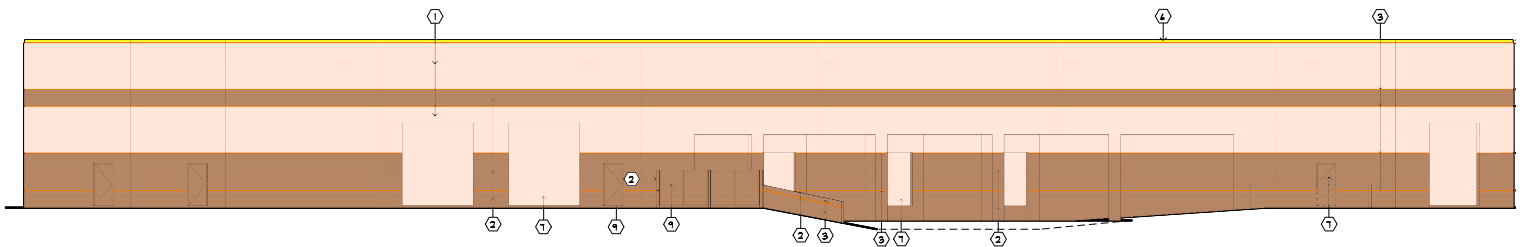
FRONT ELEVATION
(EAST FACE OF BUILDING)

SCALE: 3/32" = 1'-0" ①



LEFT SIDE ELEVATION
(SOUTH FACE OF BUILDING)

SCALE: 3/32" = 1'-0" ②



REAR ELEVATION
(WEST FACE OF BUILDING)

SCALE: 3/32" = 1'-0" ③

PROPERTY HIGHLIGHTS:

- Approximately 27, 500 SF
- Can be split into 2 units, Unit A ±15,000 SF & Unit B ±12,500
- Approximately 1,600 SF of office
- 6 Ground level doors / 2 dock high doors
- 19' Clear height
- Large ample yard
- Low cost power district
- Very close to freeway
- Completion in 2024 or sooner



LEE &
ASSOCIATES

COMMERCIAL REAL ESTATE SERVICES

Corporate DRE#: 01048055
www.lee-associates.com

No warranty or representation has been made to the accuracy of the foregoing information. Terms of sale or lease and availability are subject to change or withdrawal without notice. Lee & Associates Commercial Real Estate Services, Inc. -Riverside.

42-305 Washington Street, Suite 205, Palm Desert, CA 92211 | 951.276.3600 | Corporate DRE#: 01048055 | www.lee-associates.com

POLO DORIA
DRE#: 00880756

951.276.3696 OFFICE

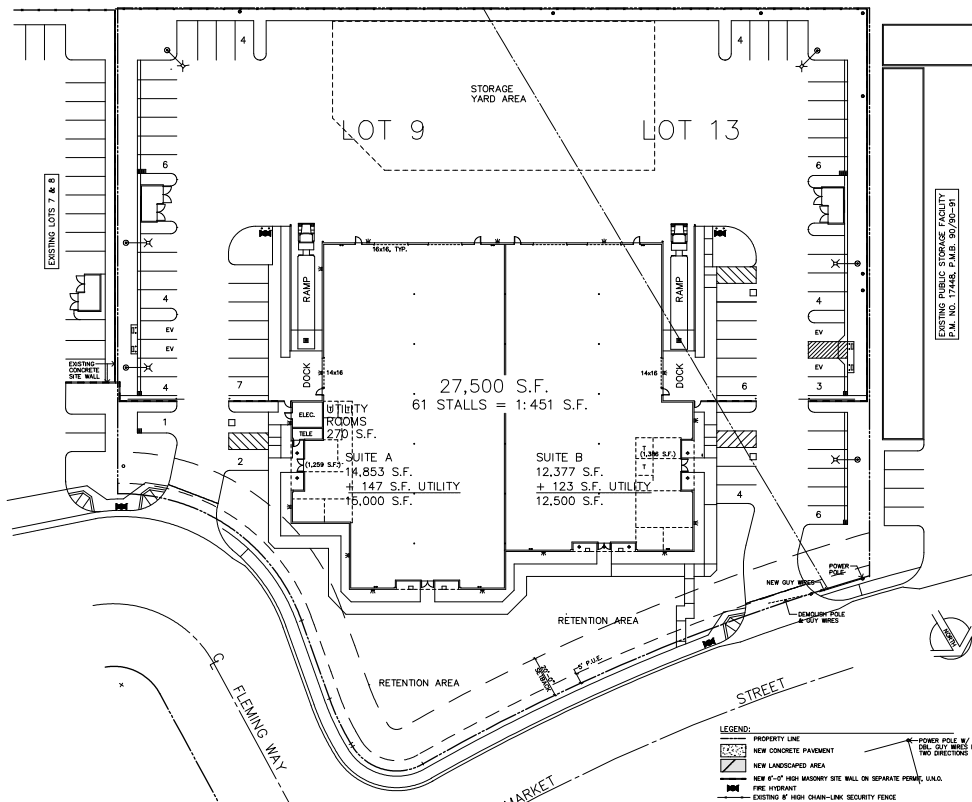
PDORIA@LEEDESERT.COM

FOR LEASE: APPROXIMATELY ±27,500 SQUARE FEET ON ±2.53 ACRES

82553 Market Street, Units 100 & 200, Indio, CA 92201



(SOUTHERN PACIFIC RAILROAD COMPANY PROPERTY)



COMMERCIAL REAL ESTATE SERVICES
Corporate DRE#: 01048055
www.lee-associates.com

POLO DORIA
DRE#: 00880756

951.276.3696 OFFICE
PDORIA@LEEDESERT.COM

No warranty or representation has been made to the accuracy of the foregoing information. Terms of sale or lease and availability are subject to change or withdrawal without notice. Lee & Associates Commercial Real Estate Services, Inc. -Riverside.

42-305 Washington Street, Suite 205, Palm Desert, CA 92211 | 951.276.3600 | Corporate DRE#: 01048055 | www.lee-associates.com