

# 6900 Orchard Lake Rd. West Bloomfield, MI

## MEDICAL OFFICE SPACE FOR LEASE

- Premier Medical Office space with 800 to 6,082 SF available
- Up to 8,583 of contiguous space
- High traffic area on Orchard Lake Road
- Building amenities include surgery center, diagnostic test areas, pharmacy, coffee bar, sundry shop, and property manager on site
- Close proximity to many shops, restaurants, and hotels
- Lease Rate: \$19.00/SF
- Suites available:

- Suite LL6 - 821 SF
- Suite 100 - 2,641 SF
- Suite 106 - 3,452 SF
- Suite 201 - 1,257 SF
- Suite 202 - 2,985 SF
- Suite 203 - 2,693 SF
- Suite 205 - 1,980 SF
- Suite 206 - 6,082 SF
- Suite 209 - 1,791 SF
- Suite 211 - 3,152 SF
- Suite 215 - 3,165 SF
- Suite 301 - 2,077 SF
- Suite 303 - 3,770 SF
- Suite 306 - 5,132 SF



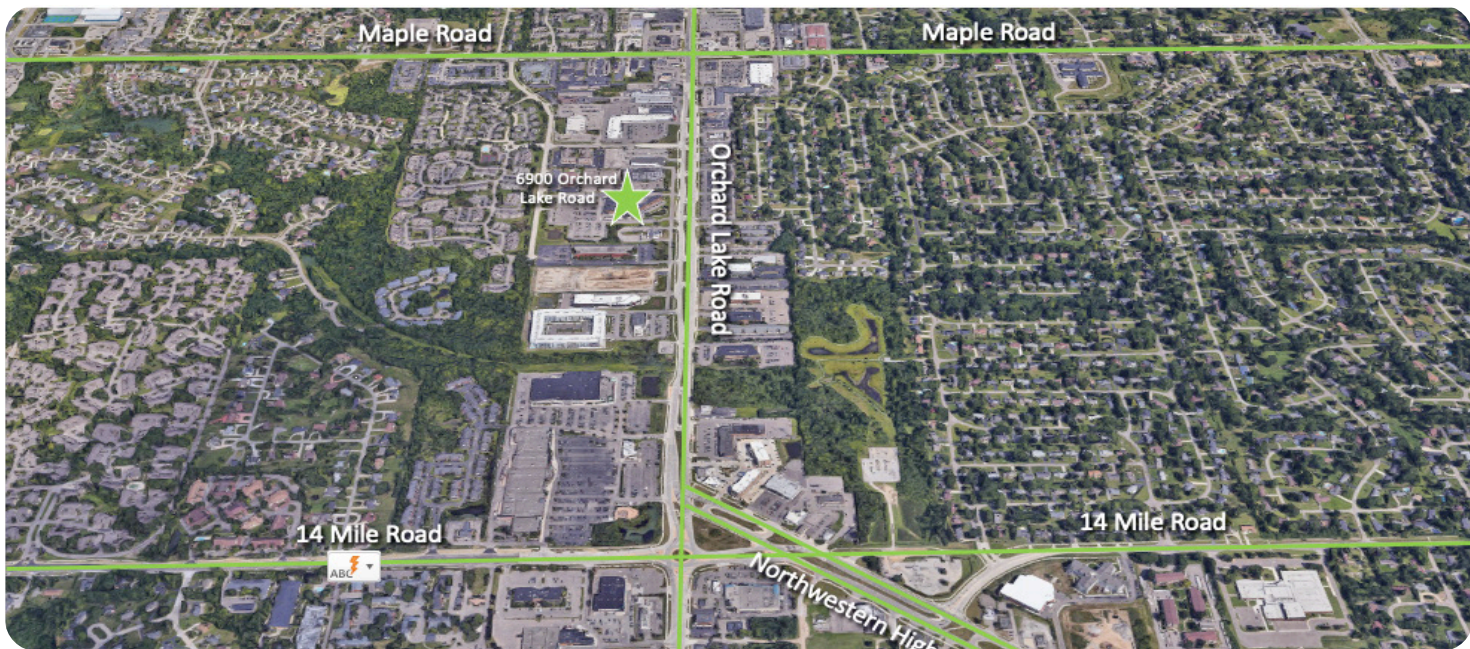
### CONTACT US

248-710-8000

691 N. Squirrel Rd, Suite 290

Auburn Hills, MI 48326

[www.team-core.com](http://www.team-core.com)



**Matthew J. Farrell**  
CEO / Owner  
248 -417 - 5482  
mjf@team-core.com



**Kevin N. Tamer**  
Vice President /  
Associate Broker  
734 -624 - 3729  
knt@team-core.com



**Samuel A. McLean**  
Vice President  
248 -935 - 7237  
sam@team-core.com



VACANT  
Suite 106  
3,452 RSF

VACANT  
Suite 100  
2,641 RSF

DO NOT SCALE



6900 Orchard Lake Road  
West Bloomfield, MI 48322

**1st Floor**  
For More Information Please Call:  
248.710.8000





DO NOT SCALE



6900 Orchard Lake Road  
West Bloomfield, MI 48322

**2nd Floor**  
For More Information Please Call:  
248.710.8000





DO NOT SCALE



6900 Orchard Lake Road  
West Bloomfield, MI 48322

3rd Floor  
For More Information Please Call:  
248.710.8000

