


Office/Medical for lease



1135 Adelaide St N

London, Ontario

 3,950 sf of clean office space

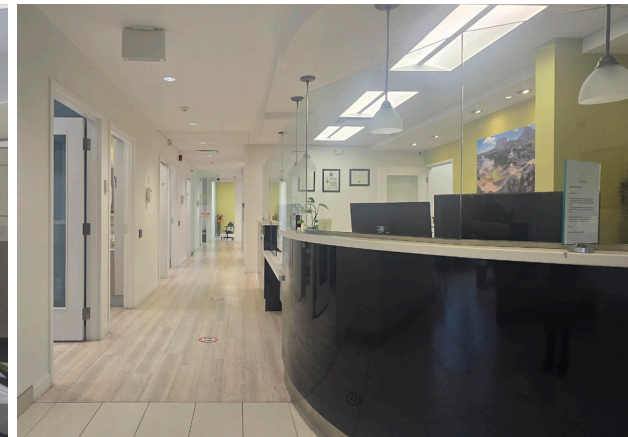
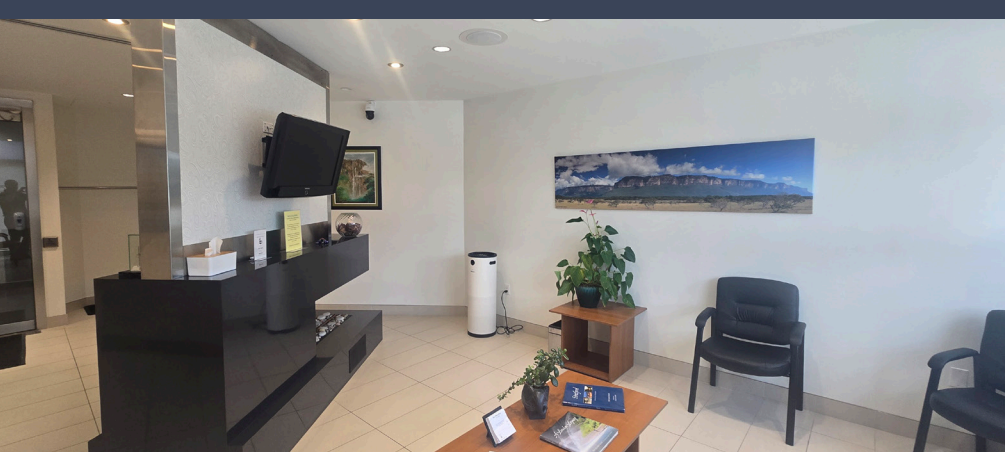
 Parking onsite

 Moments away from Highway 401



Charlie Gobert
Sales Representative, Principal
+1 226 289 2836
charlie.gobert@avisonyoung.com

Nolan Adkin
Broker, Principal
+1 226 289 2799
nolan.adkin@avisonyoung.com



Property details

1135 Adelaide St N,
London, ON

- Office/medical space available on the south end of London, moments away from Highway 401 access
- 3,950 sf unit
- The building has onsite parking and is professionally managed
- Zoning is permitted for professional office uses

\$18.00 psf

Asking net rate

\$3.00 psf

Additional rent



3,591 sf
Unit size



RO1 (5)
Zoning



Available onsite
Parking



On bus route
Public transit



Signband & directory
Signage

Get more information

Charlie Gobert

Sales Representative, Principal

+1 226 289 2836

charlie.gobert@avisonyoung.com

Nolan Adkin

Broker, Principal

+1 226 289 2799

nolan.adkin@avisonyoung.com

Avison Young Commercial Real Estate Services, LP, Brokerage
495 Richmond Street, Unit 104, London, ON N6A 5A9
T +1 226 366 9090 F +1 866 541 9755



Platinum member