



Sale Price: **\$1,653,000**

OFFERING SUMMARY

Address: 0 Robert Thompson Rd, Centralia, WA 98531
Site Size: 150,282 SF (3.45 Acres)
Zoning: Port Master Plan (PMP)
SEPA: Approved

KEY HIGHLIGHTS

- Final available site in established industrial park
- Shovel-ready with grading complete
- Utilities stubbed to site
- 48,600 SF buildable (SEPA approved)
- No floodplain constraints
- Pro-development jurisdiction

SHOVEL-READY VALUE SUMMARY

If you're comparing this to other sites that are priced at \$6-\$7 a foot, it's not apples-to-apples. This site already has approximately \$6/SF in completed site improvements so you're effectively buying land in the low \$4 range and skipping 12-18 months of work.

LOW RISK

All that is left for the buyer to do is to get the building and site design permitted.

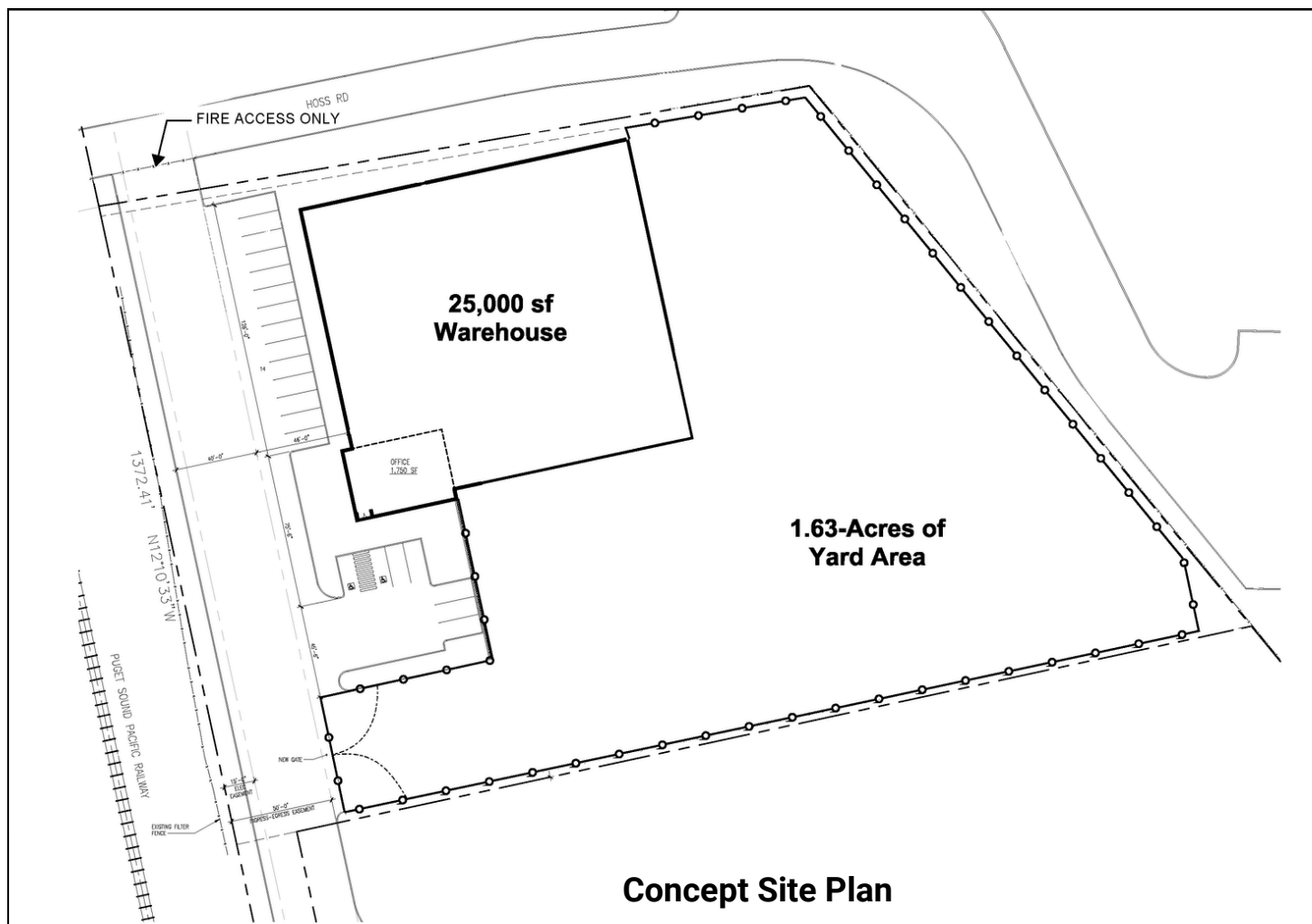
This shovel-ready industrial site eliminates the delays, uncertainty, and upfront costs of developing raw land. With major infrastructure and entitlements already completed, buyers can move directly to vertical construction.

Bob Fredrickson, CCIM
(206) 595-7232
bfredrickson@cbcworldwide.com

Todd Adams
(360) 951-9771
todd.adams@cbcworldwide.com



**COLDWELL BANKER
COMMERCIAL**
DANFORTH



COMPLETED IMPROVEMENTS

OFFSITE IMPROVEMENTS

- Water: 12" line stubbed (west)
- Sewer: force main stub (SE corner)
- Storm: regional detention ponds sized to serve
- Power: 3-phase stubbed to site
- Gas: line available along west side
- Frontage improvements completed

ONSITE IMPROVEMENTS (ENTITLEMENTS, PERMITS AND SITEWORK)

- SEPA MDNS issued (SEPA 2005-018)
- Site plan reviews completed (2005, 2008, 2011)
- Fill & grade complete (shovel-ready condition)
- Site development + building permits remaining

Bob Fredrickson, CCIM

(206) 595-7232

bfredrickson@cbcworldwide.com

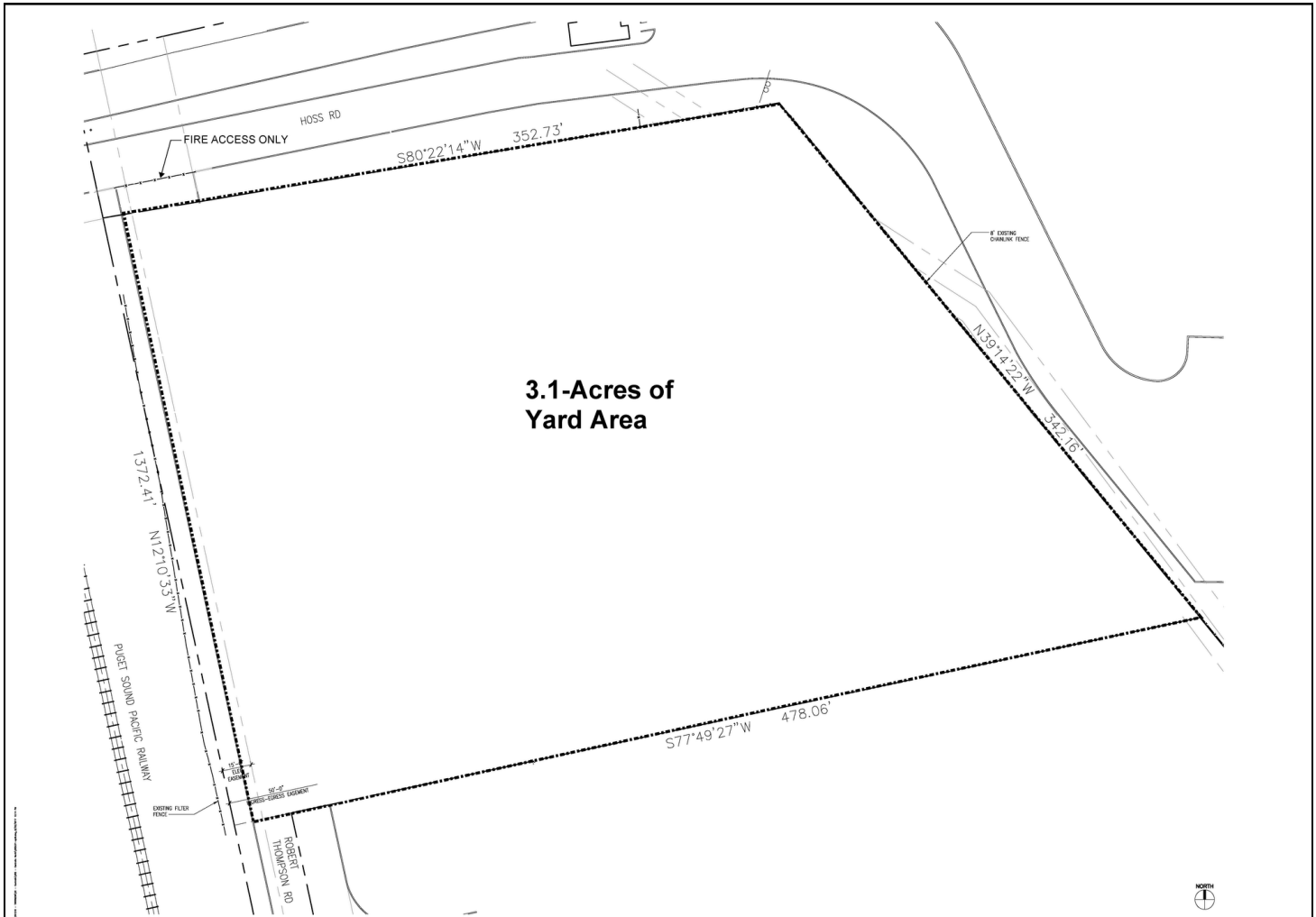
Todd Adams

(360) 951-9771

todd.adams@cbcworldwide.com



**COLDWELL BANKER
COMMERCIAL**
DANFORTH



WHY THIS SITE WINS

Centralia North Land is the final remaining parcel within the 100-acre Centralia North Corporate Park. The 3.45-acre site is shovel-ready with utilities stubbed, grading complete, and access in place.

Located within the Port of Centralia Industrial Park II, the site offers a streamlined path to development at much lower risk than other sites.

Bob Fredrickson, CCIM
(206) 595-7232
bfredrickson@cbcworldwide.com

Todd Adams
(360) 951-9771
todd.adams@cbcworldwide.com



**COLDWELL BANKER
COMMERCIAL**
DANFORTH

SUMMARY

This shovel-ready industrial site eliminates the delays, uncertainty, and upfront costs of developing raw land. With major infrastructure and entitlements already completed, buyers can move directly to vertical construction.

Completed Improvements

- Storm pond and full drainage system
- Water, sewer, storm, gas, and power extensions to site
- Frontage improvements with turn lane, curb, gutter, and sidewalk
- Shovel-ready grading with structural fill
- **SEPA entitlement and grading permit in hand (up to 48,600 SF)**

Value Advantage

- **Over \$900,000** in completed improvements (onsite and offsite)
- Adds approximately **\$6.00/SF** in verified value
- Existing offsite storm facilities allow for approximately **20,000 SF of additional developable area**
- Significantly reduces development timeline and capital risk tied to existing entitlements, and onsite and offsite improvements

Pricing

- **Offered at ~ \$11.00/SF (including improvements)**
- Results in an Adjusted Land Value of \$5.00/sf, after accounting for \$6.00/sf of value advantage described above

Bottom Line

A premium, shovel-ready industrial site competitively priced with vacant land—delivering immediate build readiness, cost certainty, and faster time to market.

Bob Fredrickson, CCIM

(206) 595-7232

bfredrickson@cbcworldwide.com

Todd Adams

(360) 951-9771

todd.adams@cbcworldwide.com

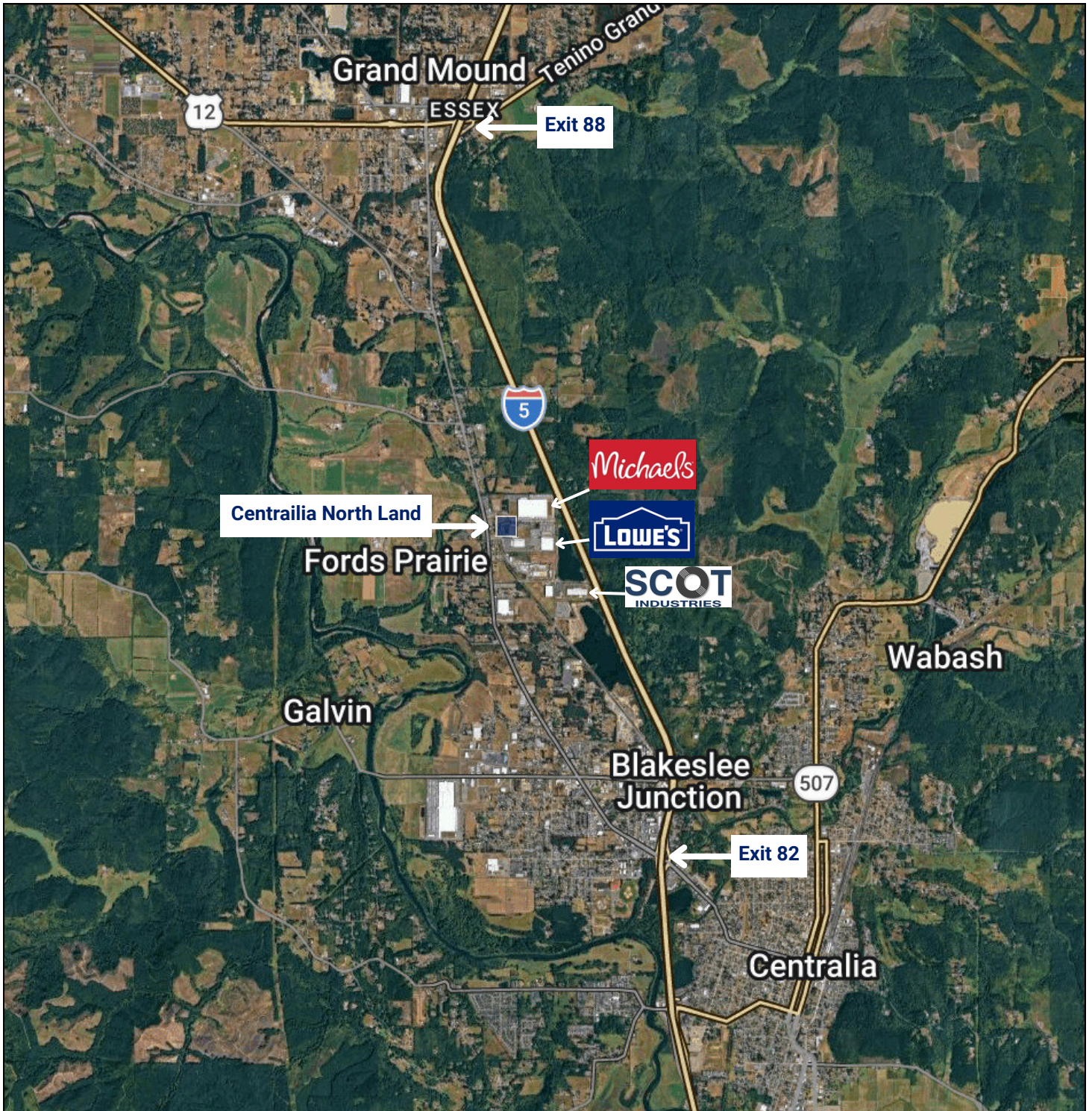


**COLDWELL BANKER
COMMERCIAL**
DANFORTH

CENTRALIA NORTH LAND

3.45 Acres | Shovel-Ready | IOS / Industrial Site

FOR SALE



Bob Fredrickson, CCIM
(206) 595-7232
bfredrickson@cbcworldwide.com

Todd Adams
(360) 951-9771
todd.adams@cbcworldwide.com



**COLDWELL BANKER
COMMERCIAL**
DANFORTH