

THE COMMODORE BUILDING

317 Adelaide Street West

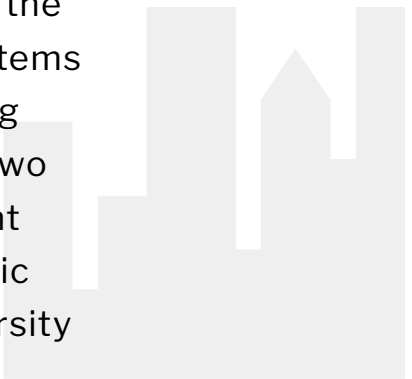
Toronto, Ontario | Suite 700 - 11,565 SF



THE COMMODORE BUILDING

317 Adelaide Street West, Toronto, ON

The Commodore Building is a heritage landmark located in the heart of Toronto's vibrant Downtown West. All building systems have been upgraded to modern standards while maintaining the integrity of its original architectural design. There are two completely refurbished passenger elevators and two freight elevators. The building is accessible from a number of public transit routes and it is within walking distance of the University Avenue subway and Union Station.



Featuring

SUITE 700-11,565 SF

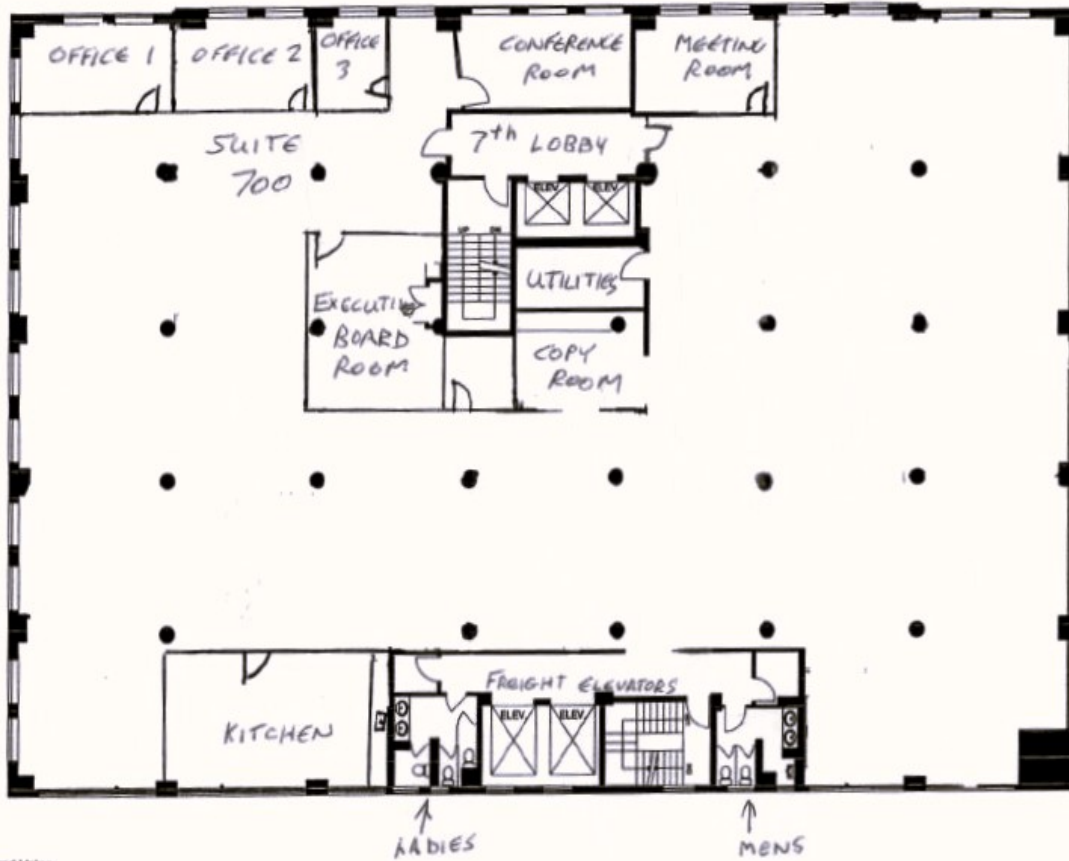
- Full Floor available immediately in base building condition
- Landlord will provide "turnkey" improvements at Landlord's cost
- High ceilings and large windows that open
- Tenant-controlled heating and air conditioning
- Rooftop patio with free Wi-Fi
- High speed Internet
- Monthly parking available
- Dogs and bicycles are welcome



PHOTO GALLERY



FLOOR PLAN



Capitol Buildings

366 Adelaide Street West
Toronto, Ontario
t: 416-596-0556

Version 1.0 | February 28, 2006

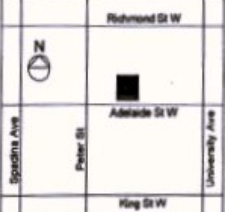
317 Adelaide Street West
Toronto, On

Floor 7

Area

SUITE 700
VACANT
NOV. 2021

Location Map



Drawing Scale

0 7 14
feet

NOV. 2021

Measured Using
Laser Technology

ADELAIDE STREET WEST



THE CAPITOL BUILDING

317 Adelaide Street West
Toronto, Ontario

LEASING CONTACT:

Harry Glicksman
Leasing Representative
+1 416 930 0432
harry@capbuildings.com

Capitol Buildings
317 Adelaide Street West, Suite 605
Toronto, Ontario M5V 1R9
tel +1 416 596 0556 x 257 | fax +1 416 596 7390
www.capitolbuildings.com