

alan johnson design, llc

3511 locust st.  
kansas city, missouri 64109  
w 816.412.8455  
e alan@alanjohnsondesign.com

architecture  
interiors  
planning  
consulting

as built drawing for  
**Prism Real Estate**  
19925 W. 161st Street-Suite A  
Olathe, Kansas

DATE  
03.30.22  
DRAWN BY  
gap  
CHECKED BY  
ajd  
REVISIONS

NO.	DATE	DESCRIPTION

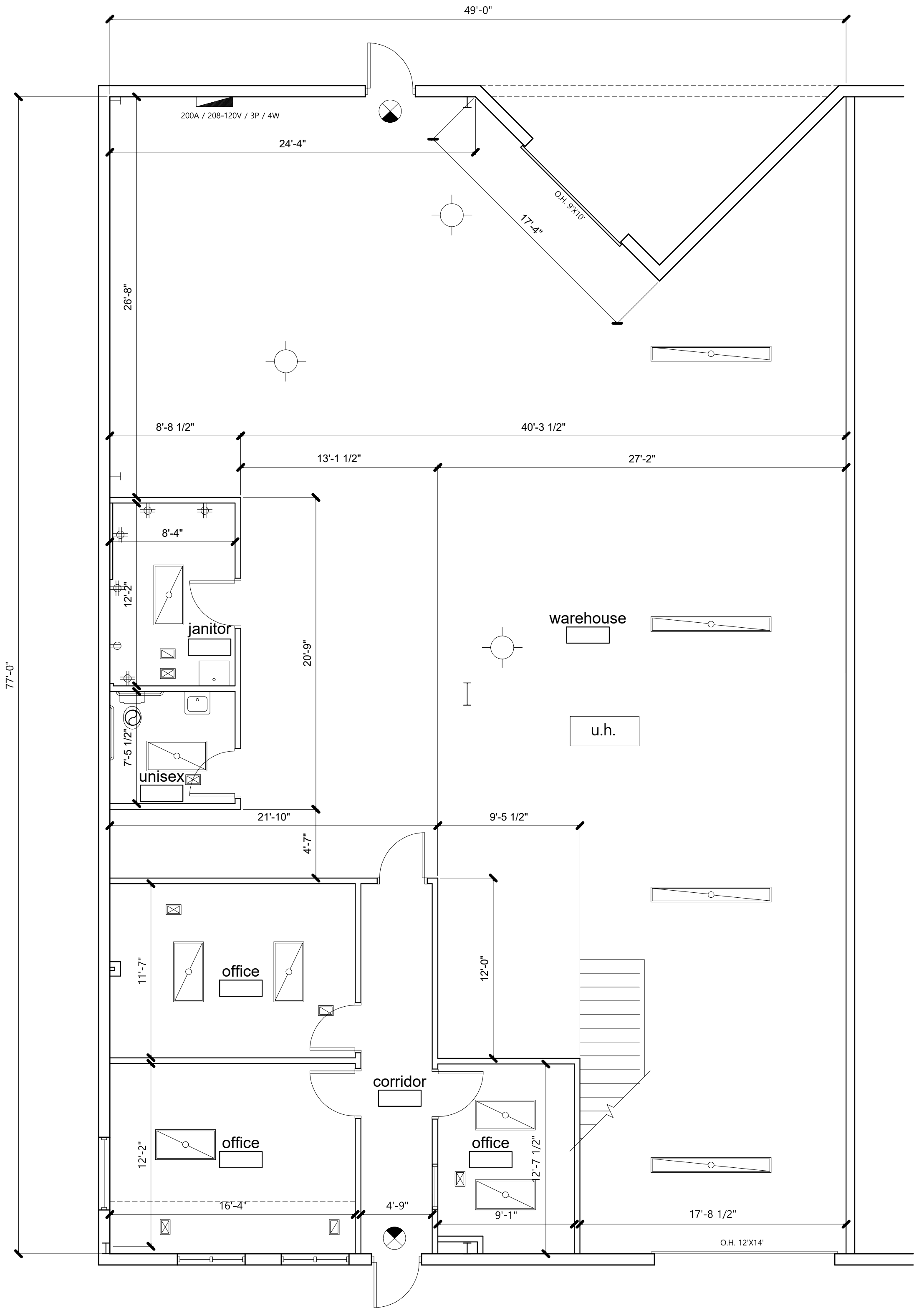
SHEET NUMBER

**A1**

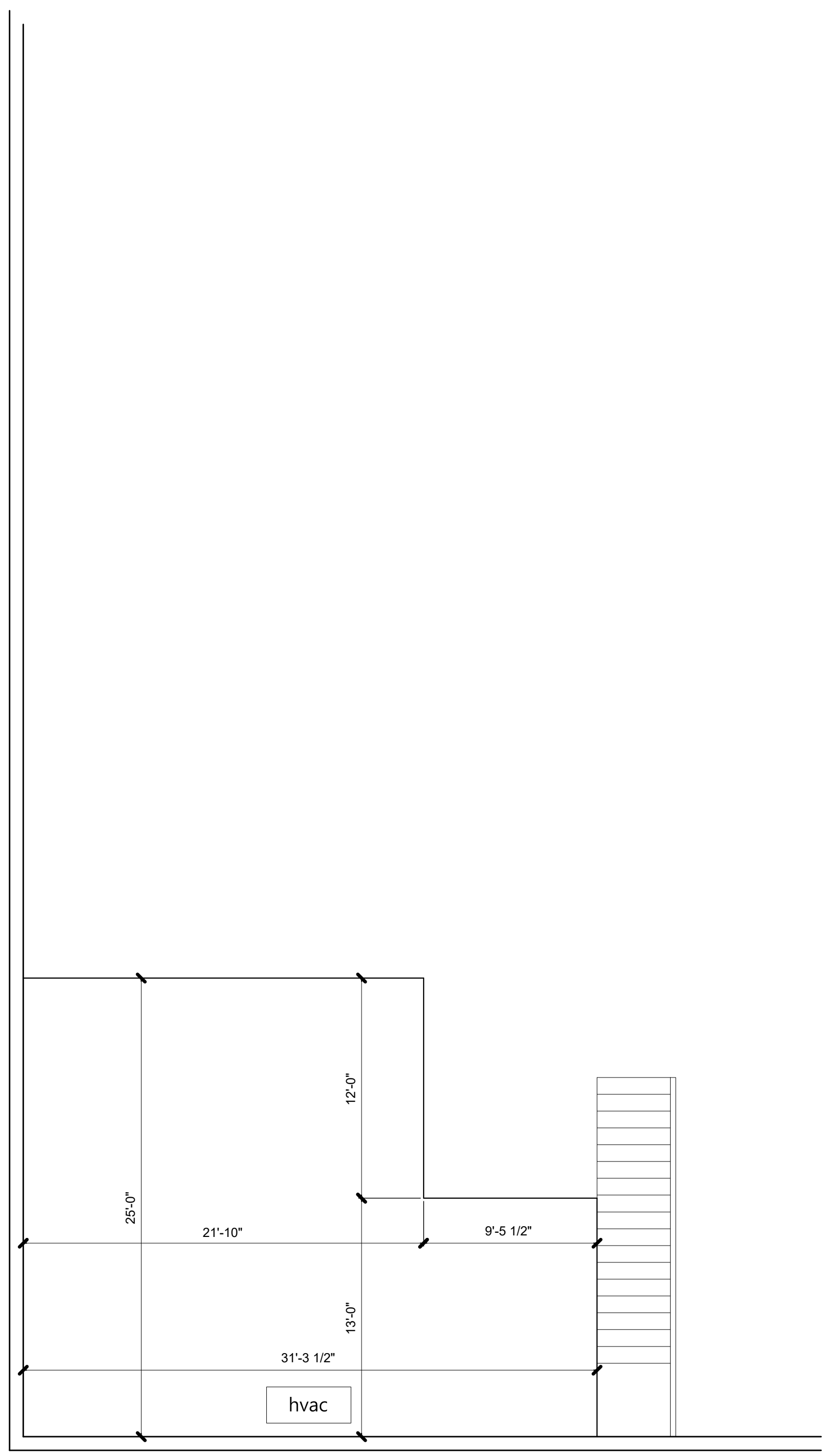
DRAWING TYPE  
as-built

CAD FILE  
19925 w 161st St-A

PROJECT NUMBER  
13005-d6



**1** floor plan  
scale: 3/16" = 1'-0"  
NORTH



**2** mezz. plan  
scale: 3/16" = 1'-0"  
NORTH

**project synopsis**

governing municipality: olathe, kansas  
governing code: 2018 ibc, 2018 ifc, 2018 ipc, 2018 imc, 2017 nec  
construction type: ib  
fire suppression: no  
tenant area: 3,786± sq. ft.  
b (business): 701± sq. ft.  
s1 (warehouse): 3,085± sq. ft.  
mezzanine: 712± sq. ft.  
occupancy group: b (business) 2,417 sq. ft.  
s1 (warehouse) 433 sq. ft.  
stories: one