

FOR LEASE

1158 SUNCAST LN

±1,490 SF Available Now

EL DORADO HILLS, CA 95762



KIDDER.COM

km Kidder
Mathews



PROPERTY HIGHLIGHTS



OFFERED AT \$1.75 PSF NNN



FULLY IMPROVED
PROFESSIONAL OFFICE SPACE



WELL ESTABLISHED OFFICE PARK
OFFERING ABOVE STANDARD
COMMON AREA INCLUDING
POND, WATER FEATURES, AND
PUTTING GREEN.



ZONED R&D (RESEARCH
& DEVELOPMENT)

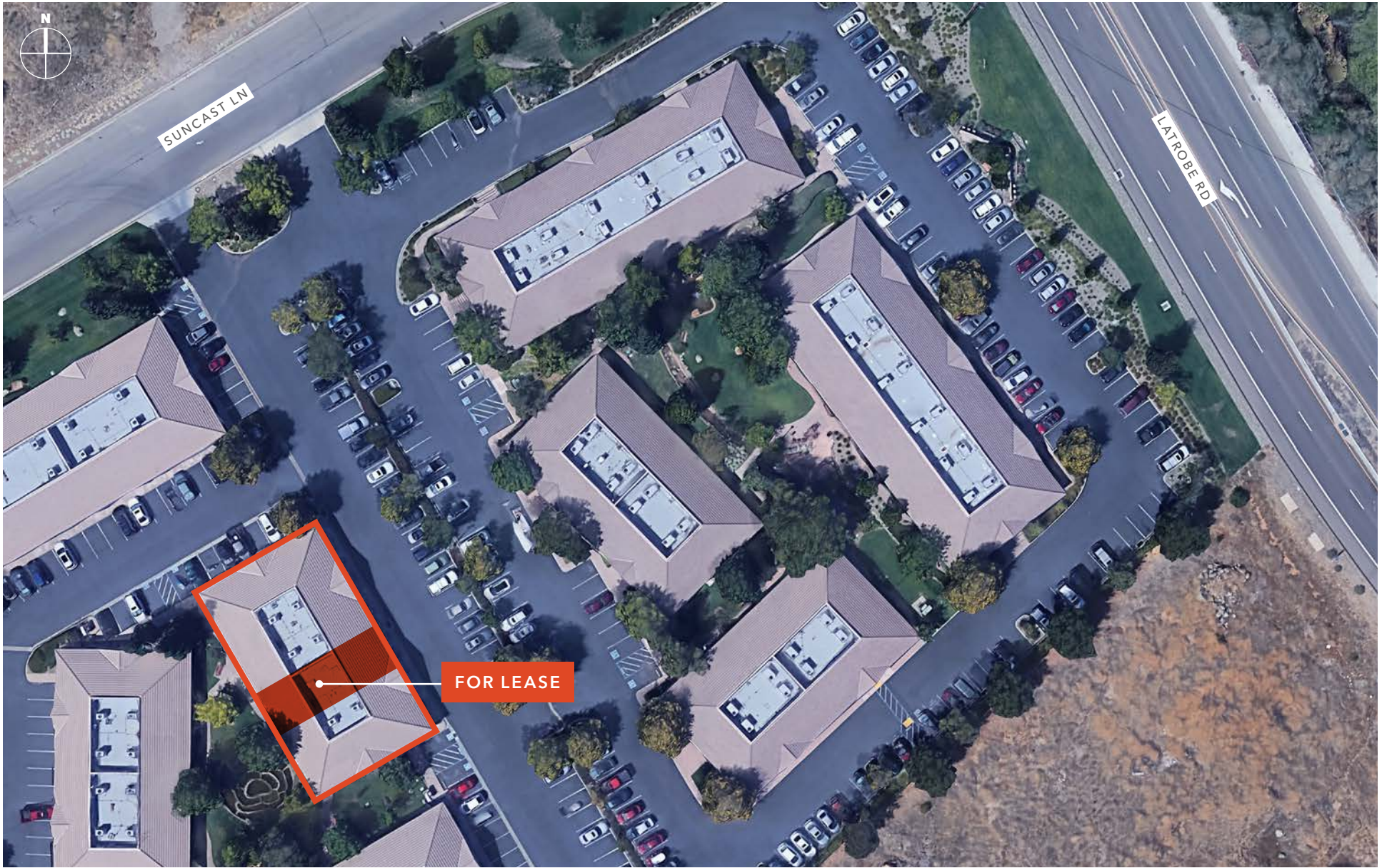


LOCATED IN EL DORADO HILLS
BUSINESS PARK

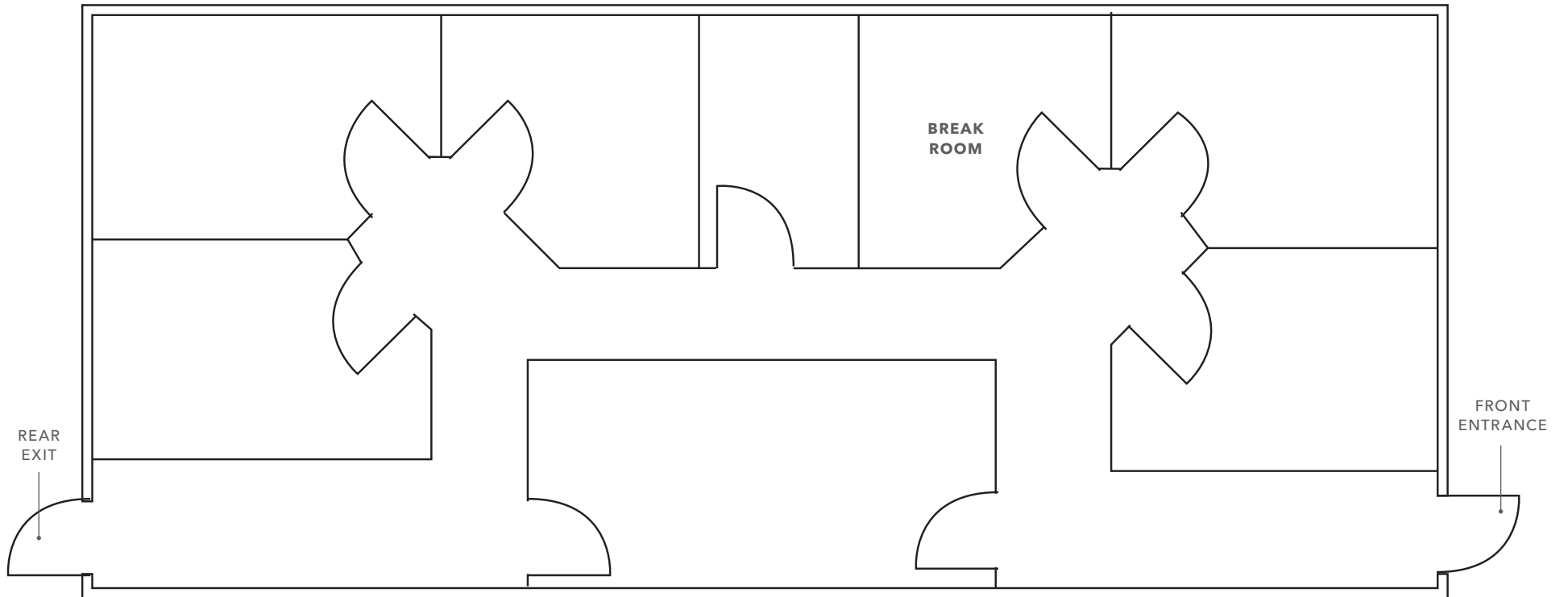


YEAR BUILT 2000



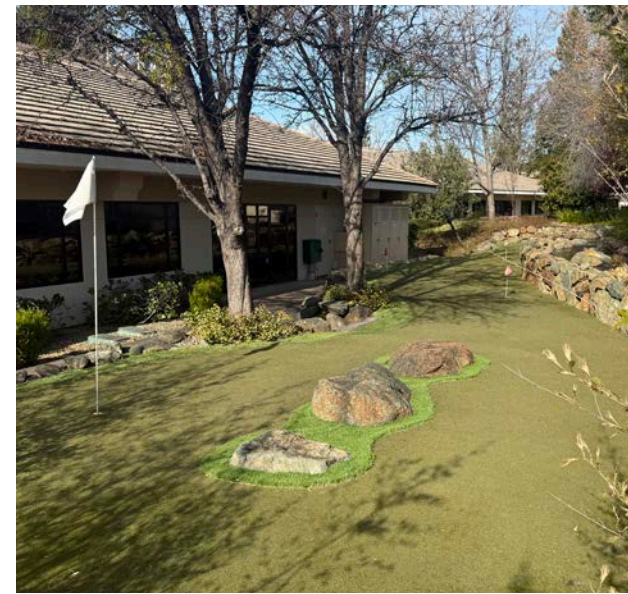
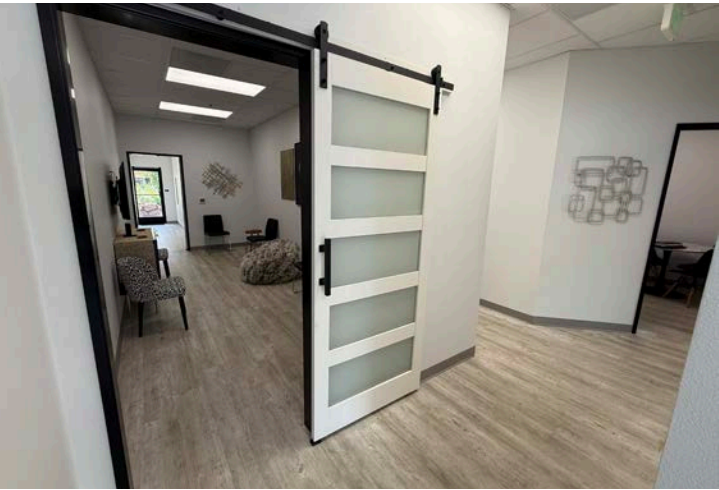


FLOOR PLAN



1158 SUNCAST LANE

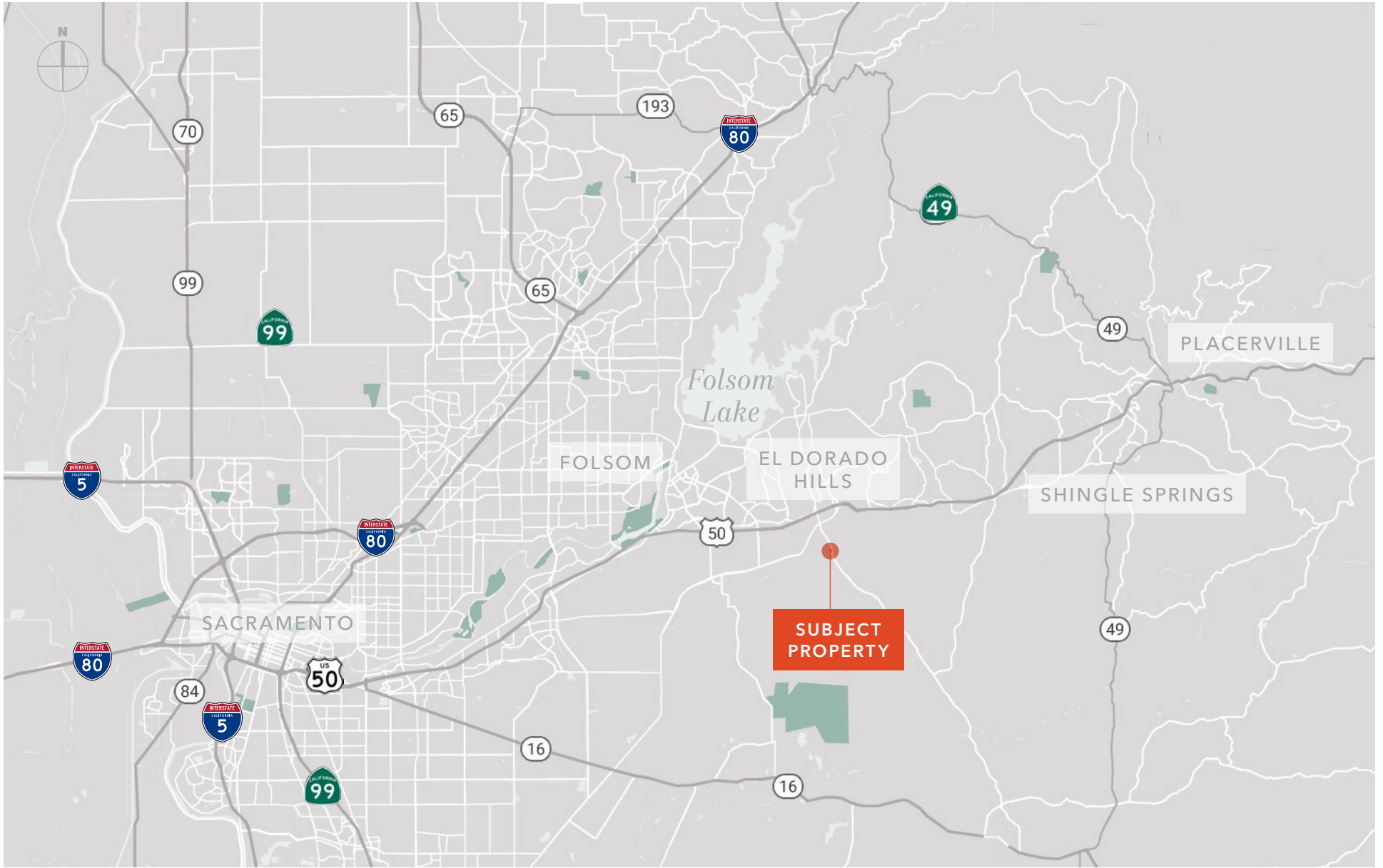
PROPERTY PHOTOS



AVAILABLE FOR LEASE

KIDDER MATHEWS







1158 SUNCAST LANE

*For more information on
this property, please contact*

TOM CONWELL
916.751.3626
tom.conwell@kidder.com

LIC N° 01394155

KIDDER.COM

This information supplied herein is from sources we deem reliable. It is provided without any representation, warranty, or guarantee, expressed or implied as to its accuracy. Prospective Buyer or Tenant should conduct an independent investigation and verification of all matters deemed to be material, including, but not limited to, statements of income and expenses. Consult your attorney, accountant, or other professional advisor. All Kidder Mathews designs are the sole property of Kidder Mathews. Branded materials and layouts are not authorized for use by any other firm or person.

