

# 4104 HOUSTON HWY #500

**UNIT FOR LEASE**



**SOUTH  
TEXAS**  
RENTALS.COM



20,800+ DAILY TRAFFIC COUNT



## AVAILABLE SPACES

Unit	SQFT	NNN
Suite 500	609 SQFT	16 / SF / YR



# ABOUT THE PROPERTY

4104 Houston Hwy's premier location, brand-new look, strong tenancy, high foot traffic provide an ideal leasing opportunity in a dense suburban location with excellent demographics. This multi-tenant retail strip center is strategically located in a high traffic area (20,800+ Average Daily Traffic Count), surrounded by many national retail brands including Walmart, Goodwill, and many others..

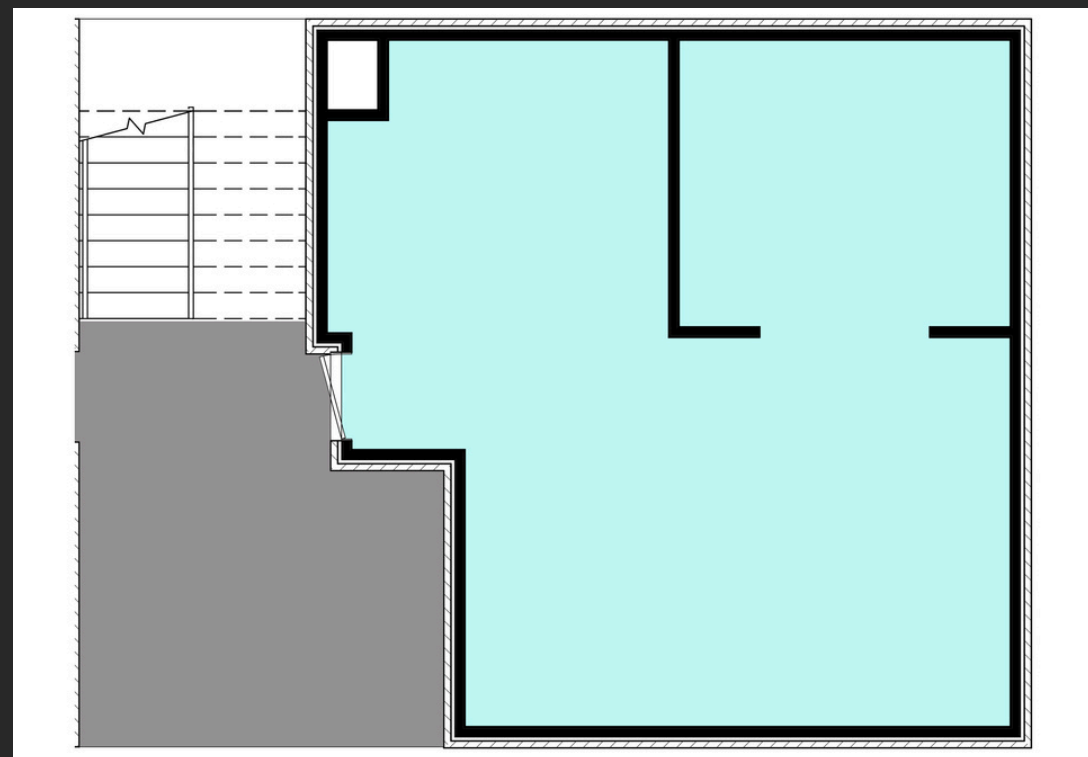
## DEMOGRAPHICS

- Traffic Count: 20,819
- Total Population: 92,678 (25 mi)
- Population Projection 2026: 94,047

# \$16 / SF / YR

## Suite 500 | 609 SQFT

This commercial property is located on the busy Houston Highway (Daily Traffic Count of 20,800+). Perfect location for your next business or office, located right off the highly-trafficked Houston Highway. This suite has been fully-remodeled with vinyl flooring and modern fixtures.







**SUITE 100**  
FIRST / SECOND FLOOR  
2,252 SQ FT

**SUITE 200**  
FIRST FLOOR  
569 SQ FT

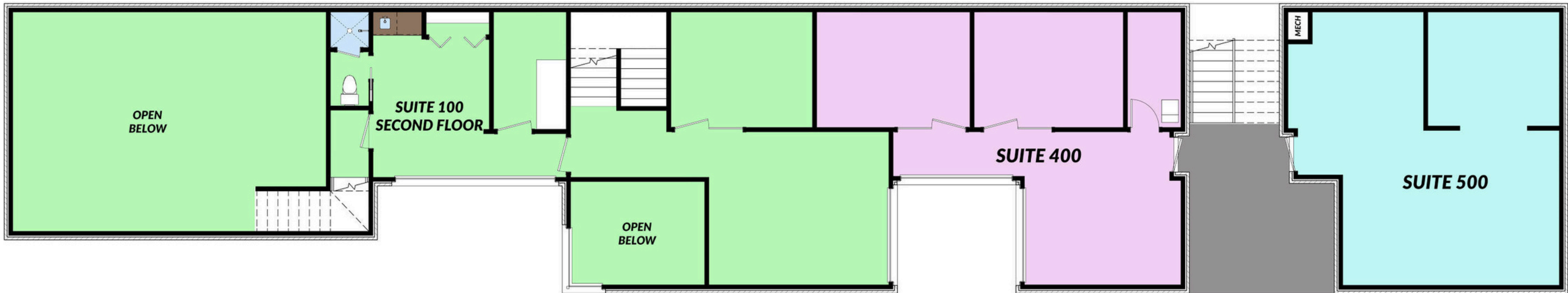
**SUITE 300**  
FIRST FLOOR  
609 SQ FT

**SUITE 400**  
SECOND FLOOR  
654 SQ FT

**SUITE 500**  
SECOND FLOOR  
609 SQ FT

**PUBLIC**  
**ACCESS**

**4104 HOUSTON HWY.**



# CONTACT



**SOUTH  
TEXAS**  
RENTALS.COM

**PHONE**

**(361) 333-2002**

**WEBSITE**

**[www.SouthTexasRentals.com](http://www.SouthTexasRentals.com)**

**EMAIL**

**[leasing@SouthTexasRentals.com](mailto:leasing@SouthTexasRentals.com)**

**ADDRESS**

**4800 N Navarro St, Victoria, TX 77901**