



## 2365 Woodlake Dr

2365 Woodlake Drive  
Okemos, Michigan 48864

### Property Highlights

- Class A Office with several floor plans available
- Close proximity to restaurants, hotels and shopping
- Easy access I-96 & Okemos Road (behind the Cracker Barrel & Fairfield Inn)
- Flexible terms and ample onsite parking

### Offering Summary

Lease Rate:	\$15.00 SF/yr (MG)
Building Size:	14,490 SF
Available SF:	1,186 - 14,490 SF

Spaces	Lease Rate	Space Size
Full Building	\$15.00 SF/yr	14,490 SF
Suite 100	\$15.00 SF/yr	3,243 SF
Suite 120	\$15.00 SF/yr	2,945 SF
Suite 140	\$15.00 SF/yr	1,186 SF
Suite 160	\$15.00 SF/yr	3,283 SF
Suite 180	\$15.00 SF/yr	2,968 SF

### For More Information



#### Jeffrey Branch

Associate Broker

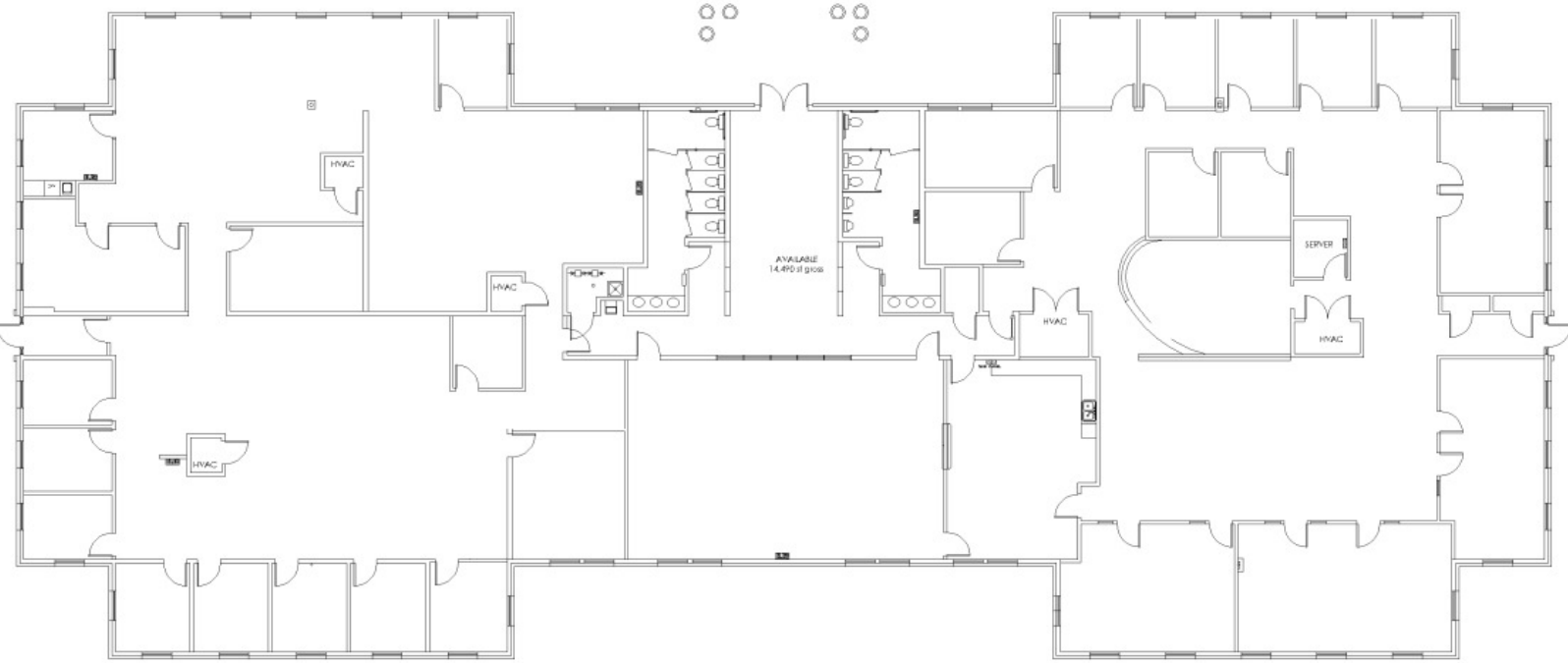
O: 517 487 9222 | C: 517 899 6368

[jbranch@naimidmichigan.com](mailto:jbranch@naimidmichigan.com)

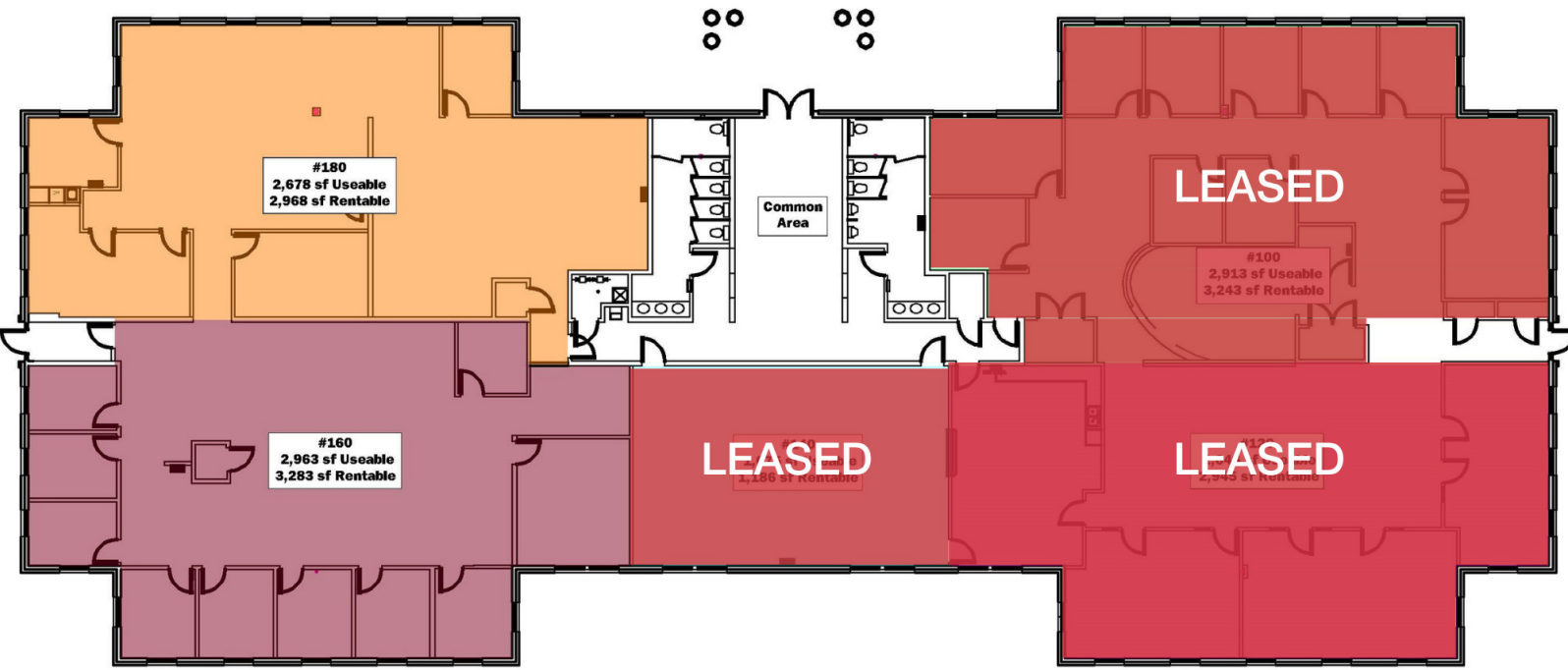


NO WARRANTY OR REPRESENTATION, EXPRESS OR IMPLIED, IS MADE AS TO THE ACCURACY OF THE INFORMATION CONTAINED HEREIN, AND THE SAME IS SUBMITTED SUBJECT TO ERRORS, OMISSIONS, CHANGE OF PRICE, RENTAL OR OTHER CONDITIONS, PRIOR SALE, LEASE OR FINANCING, OR WITHDRAWAL WITHOUT NOTICE, AND OF ANY SPECIAL LISTING CONDITIONS IMPOSED BY OUR PRINCIPALS NO WARRANTIES OR REPRESENTATIONS ARE MADE AS TO THE CONDITION OF THE PROPERTY OR ANY HAZARDS CONTAINED THEREIN ARE INTENDED TO BE IMPLIED

2149 Jolly Road, Suite 200  
Okemos, MI 48864  
517 487 9222 tel  
naimidmichigan.com

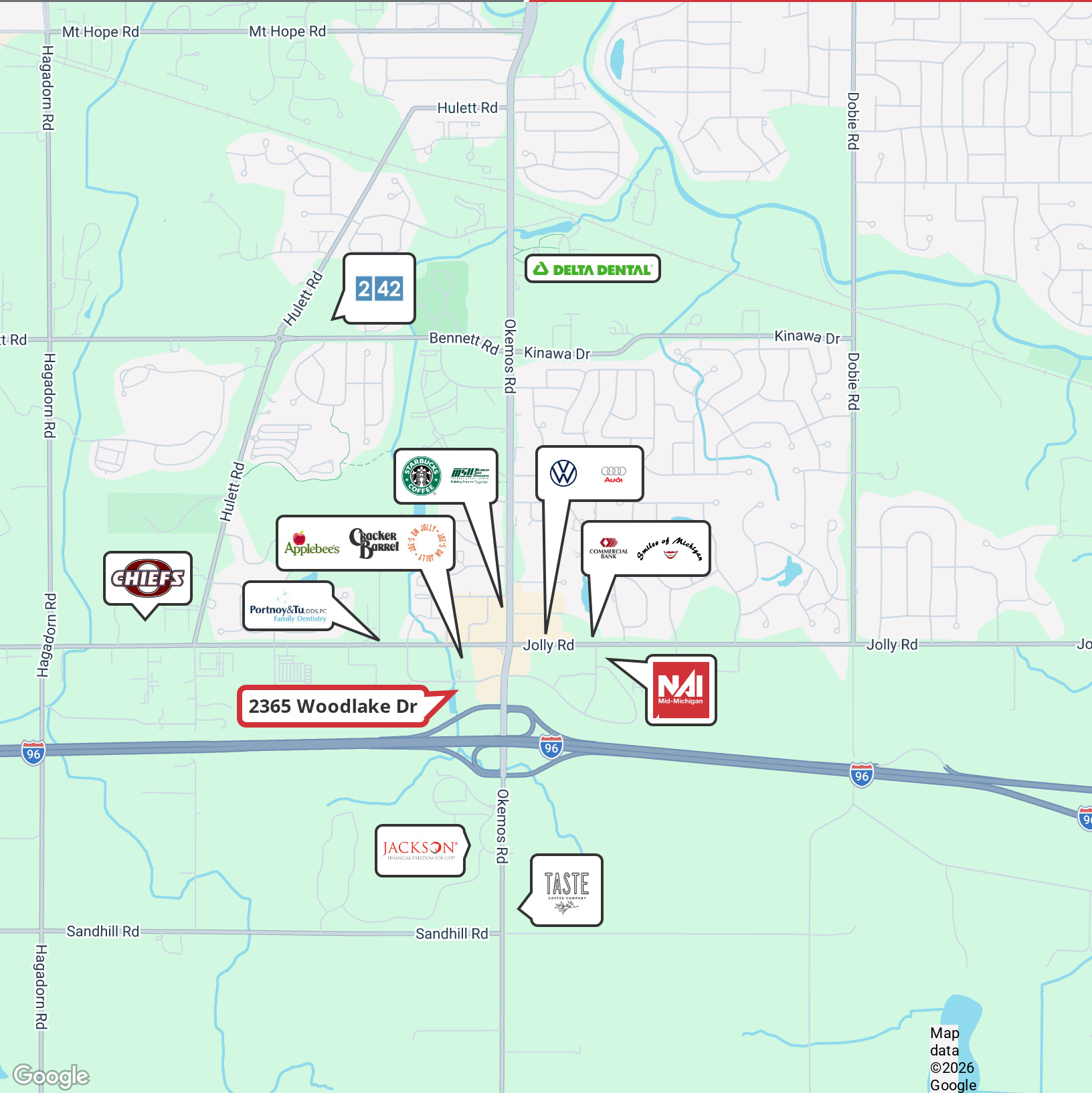


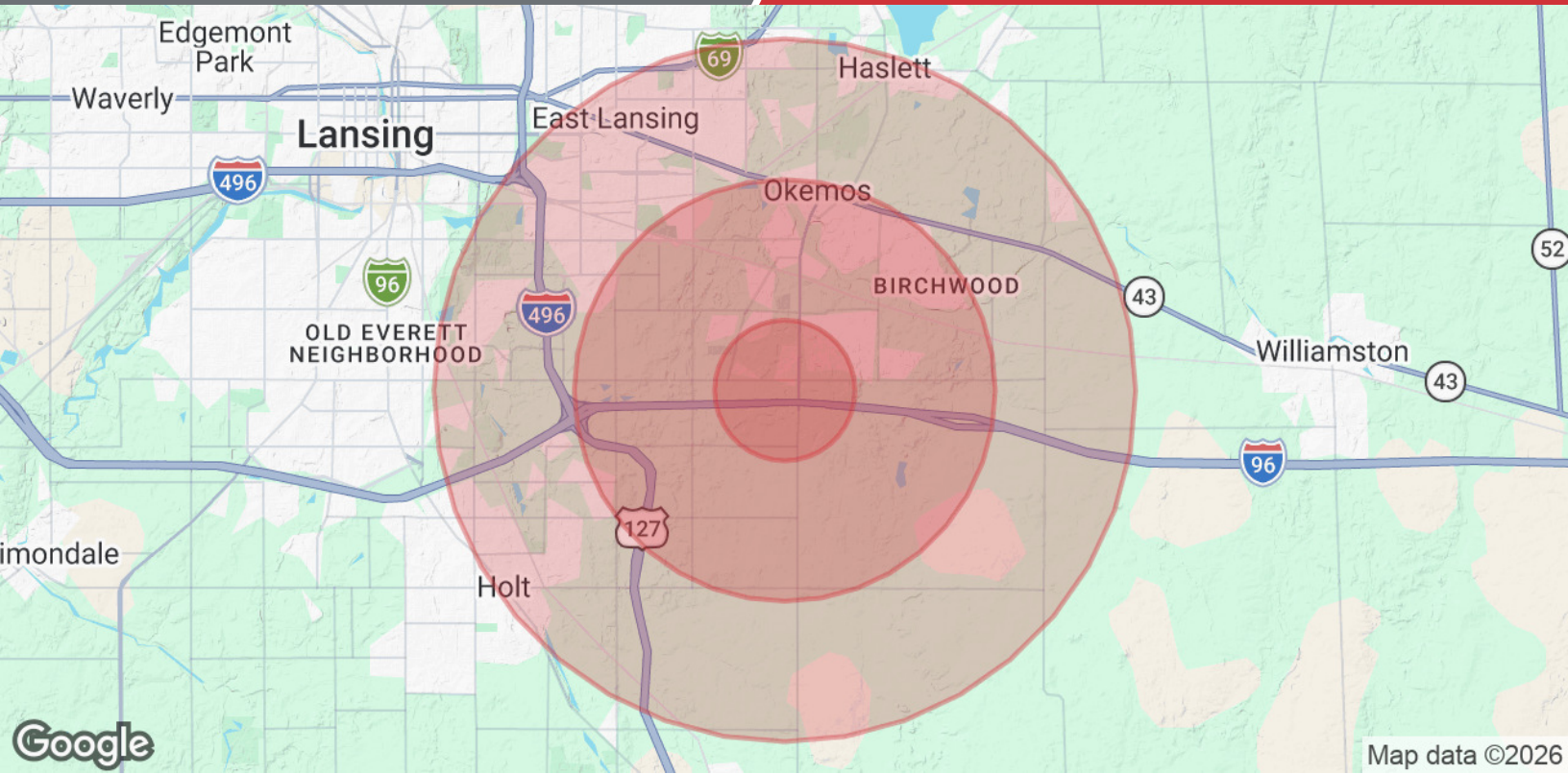
Full Building Floor Plan



Individual Suite Plans

NO WARRANTY OR REPRESENTATION, EXPRESS OR IMPLIED, IS MADE AS TO THE ACCURACY OF THE INFORMATION CONTAINED HEREIN, AND THE SAME IS SUBMITTED SUBJECT TO ERRORS, OMISSIONS, CHANGE OF PRICE, RENTAL OR OTHER CONDITIONS, PRIOR SALE, LEASE OR FINANCING, OR WITHDRAWAL WITHOUT NOTICE, AND OF ANY SPECIAL LISTING CONDITIONS IMPOSED BY OUR PRINCIPALS. NO WARRANTIES OR REPRESENTATIONS ARE MADE AS TO THE CONDITION OF THE PROPERTY OR ANY HAZARDS CONTAINED THEREIN ARE INTENDED TO BE IMPLIED.





### Population

	1 Mile	3 Miles	5 Miles
Total Population	4,036	22,537	94,925
Average Age	38	39	34
Average Age (Male)	37	38	34
Average Age (Female)	38	40	35

### Households & Income

	1 Mile	3 Miles	5 Miles
Total Households	1,569	8,984	35,026
# of Persons per HH	2.6	2.5	2.7
Average HH Income	\$134,858	\$130,338	\$94,024
Average House Value	\$411,319	\$366,667	\$252,435

2020 American Community Survey (ACS)