

MERCER BUSINESS PARK

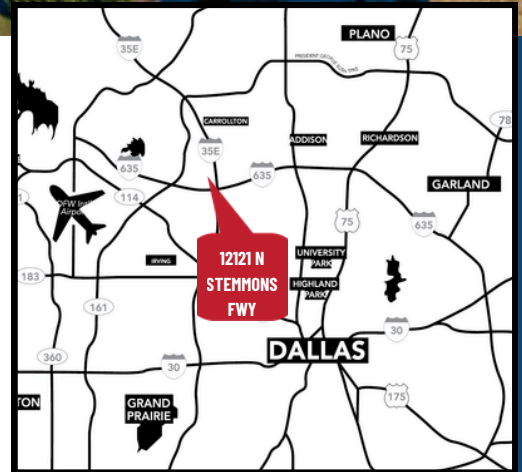
FOR SUBLEASE • 50,013 SF



12121 N STEMMONS FWY
DALLAS, TEXAS 75234



RICH YOUNG, JR. | SIOR
214.563.1707
richjr@richyoungcompany.com



MERCER BUSINESS PARK

FOR SUBLEASE • 50,013 SF

Property Highlights

- 50,013 SF Available
- 3,023 SF Office Area
- 6 Dock Doors, 1 Ramp
- 32' Clear Height
- 400' Building Depth
- 50' X 50' Bay Size
- ESFR Sprinkler
- Frontage on 35

RICH YOUNG, JR. | SIOR

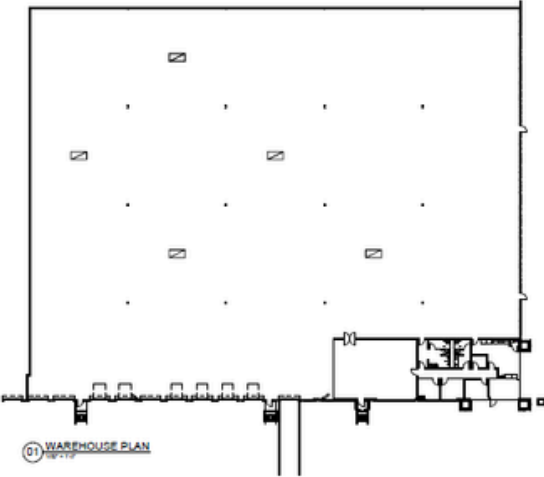
214.563.1707

richjr@richyoungcompany.com

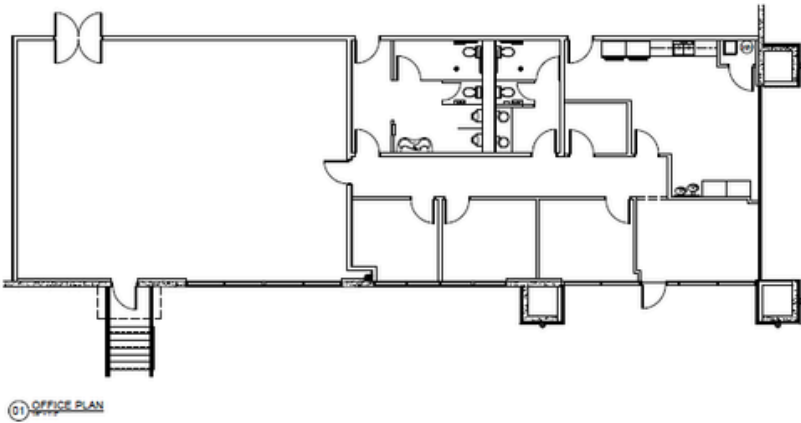
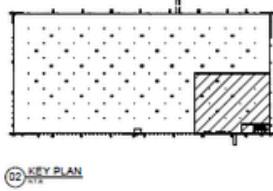


MERCER BUSINESS PARK

FOR SUBLEASE • 50,013 SF



WAREHOUSE



OFFICE

RICH YOUNG, JR. | SIOR
214.563.1707
richjr@richyoungcompany.com



MERCER BUSINESS PARK

FOR SUBLEASE • 50,013 SF



RICH YOUNG, JR. | SIOR
214.563.1707
richjr@richyoungcompany.com

