

1420 K STREET NW

Washington, DC 20005

Office For Lease

1,172 - 5,069 SF



Leasing Information:
202.513.6700

Lincoln

Adam Biberaj	Merrill Turnbull	McKay Elliott	Tim Whitebread
202.513.6736	202.513.6713	202.513.6724	202.513.6712
abiberaj@lpc.com	mturnbull@lpc.com	melliott@lpc.com	twhitebread@lpc.com

101 Constitution Avenue NW
Suite 325 East
Washington, DC 20001

www.lpc.com

1420 K STREET NW

Washington, DC 20005

Office For Lease

1,172 - 5,069 SF



Property Highlights

- Mid-block location on prime K Street, one-block from McPherson Square Metro
- Lobby and common area renovations delivering in 2026
- Spec suites delivering in Fall 2026
- Modern lobby directory & on-site security guard
- Window-rich floors with excellent natural light
- High-speed Schindler elevators with upgraded cabs
- Renovated restrooms

Availabilities

Availabilities	SF	Lease Rate	Date Available
Suite 200	1,886 SF	\$35.00 FS	Fall 2026
Suite 300	1,409 SF	\$38.00 FS	Fall 2026
Suite 310	1,172 SF	\$38.00 FS	Fall 2026
Suite 320	1,401 SF	\$35.00 FS	Fall 2026
Suite 400	2,033 SF	\$38.00 FS	Fall 2026
Suite 420	2,039 SF	\$38.00 FS	Fall 2026
Suite 500	5,069 SF	\$38.00 FS	Immediately
Spec Suite 620	2,854 SF	\$38.00 FS	Immediately
Spec Suite 900	2,561 SF	\$38.00 FS	Immediately

Adam Biberaj

202.513.6736
abiberaj@lpc.com

Merrill Turnbull

202.513.6713
mturnbull@lpc.com

McKay Elliott

202.513.6724
melliott@lpc.com

Tim Whitebread

202.513.6712
twhitebread@lpc.com

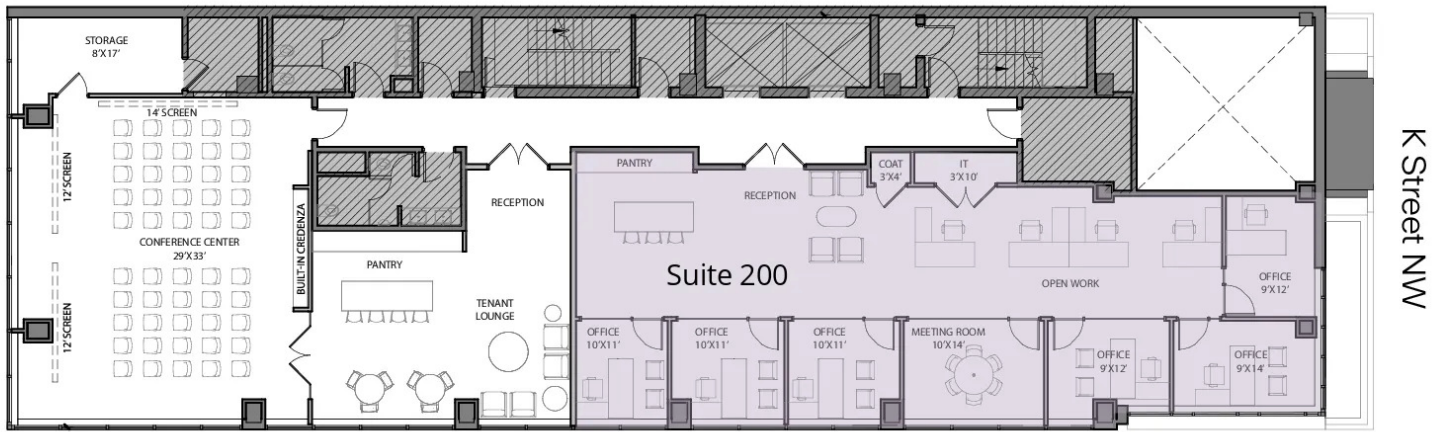
Lincoln

1420 K STREET NW

Washington, DC 20005

2nd Floor

1,886 SF



Conference Center
& Tenant Lounge

Suite	Size	Lease Rate	Description
■ Suite 200	1,886 SF	\$35.00 FS	Spec suite delivering Fall 2026.

Adam Biberaj
202.513.6736
abiberaj@lpc.com

Merrill Turnbull
202.513.6713
mturnbull@lpc.com

McKay Elliott
202.513.6724
melliott@lpc.com

Tim Whitebread
202.513.6712
twhitebread@lpc.com

Lincoln

1420 K STREET NW

Washington, DC 20005

3rd Floor

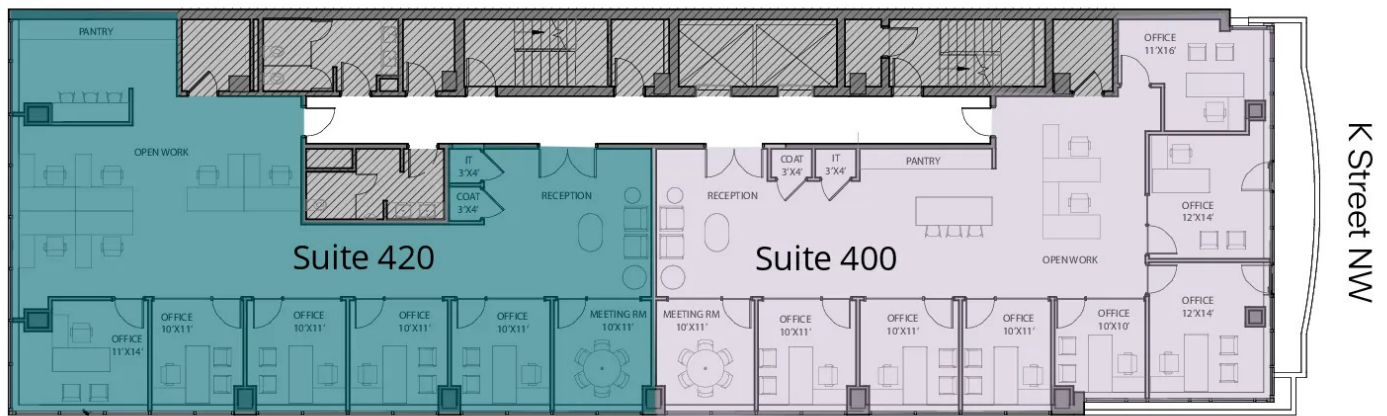
1,409 SF



Suite	Size	Lease Rate	Description
■ Suite 300	1,409 SF	\$38.00 FS	Front-of-building spec suite with balcony overlooking K Street delivering Fall 2026.
■ Suite 310	1,172 SF	\$38.00 FS	Spec suite delivering Fall 2026.
■ Suite 320	1,401 SF	\$35.00 FS	Spec suite delivering Fall 2026.

Adam Biberaj 202.513.6736 abiberaj@lpc.com	Merrill Turnbull 202.513.6713 mturnbull@lpc.com	McKay Elliott 202.513.6724 melliott@lpc.com	Tim Whitebread 202.513.6712 twhitebread@lpc.com
---	--	--	--

Lincoln



Suite	Size	Lease Rate	Description
■ Suite 400	2,033 SF	\$38.00 FS	Front-of-building spec suite with balcony overlooking K Street delivering Fall 2026.
■ Suite 420	2,039 SF	\$38.00 FS	Spec suite delivering Fall 2026.

Adam Biberaj 202.513.6736 abiberaj@lpc.com	Merrill Turnbull 202.513.6713 mturnbull@lpc.com	McKay Elliott 202.513.6724 melliott@lpc.com	Tim Whitebread 202.513.6712 twhitebread@lpc.com
---	--	--	--

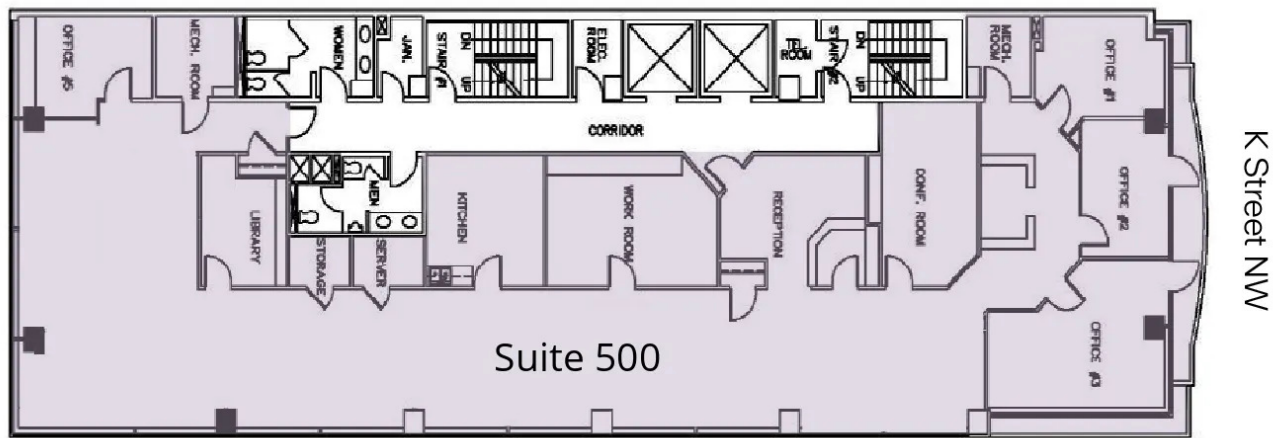
Lincoln

1420 K STREET NW

Washington, DC 20005

5th Floor

5,069 SF



Suite	Size	Lease Rate	Description
■ Suite 500	5,069 SF	\$38.00 FS	Full floor available immediately featuring front office, open plan space and a private balcony overlooking K Street with views of Franklin Square Park

Adam Biberaj **Merrill Turnbull** **McKay Elliott** **Tim Whitebread**
202.513.6736 202.513.6713 202.513.6724 202.513.6712
abiberaj@lpc.com mturnbull@lpc.com mellott@lpc.com twhitebread@lpc.com

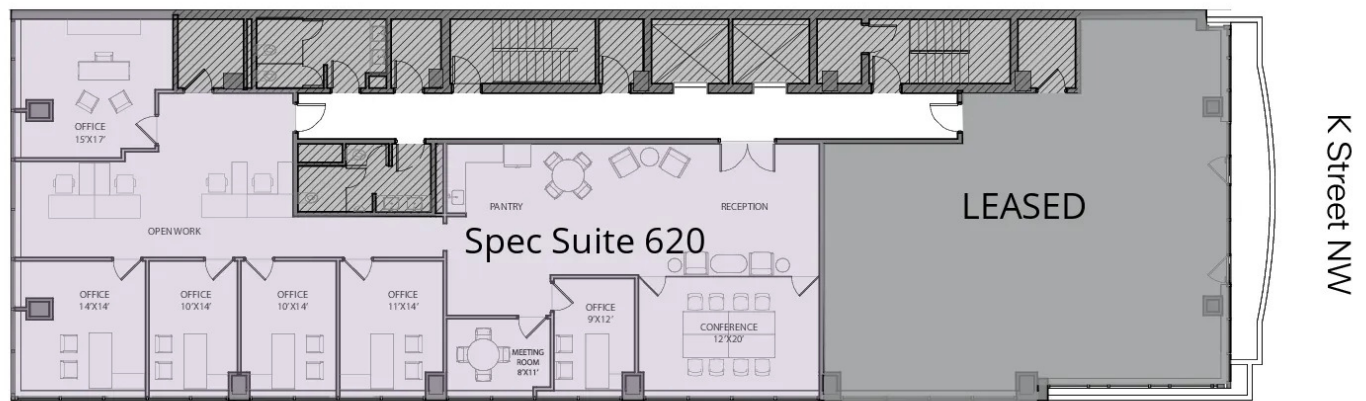
Lincoln

1420 K STREET NW

Washington, DC 20005

6th Floor

2,854 SF



Suite	Size	Lease Rate	Description
■ Spec Suite 620	2,854 SF	\$38.00 FS	Space available immediately featuring excellent natural light and views of Franklin Square Park

Adam Biberaj
202.513.6736
abiberaj@lpc.com

Merrill Turnbull
202.513.6713
mturnbull@lpc.com

McKay Elliott
202.513.6724
melliott@lpc.com

Tim Whitebread
202.513.6712
twhitebread@lpc.com

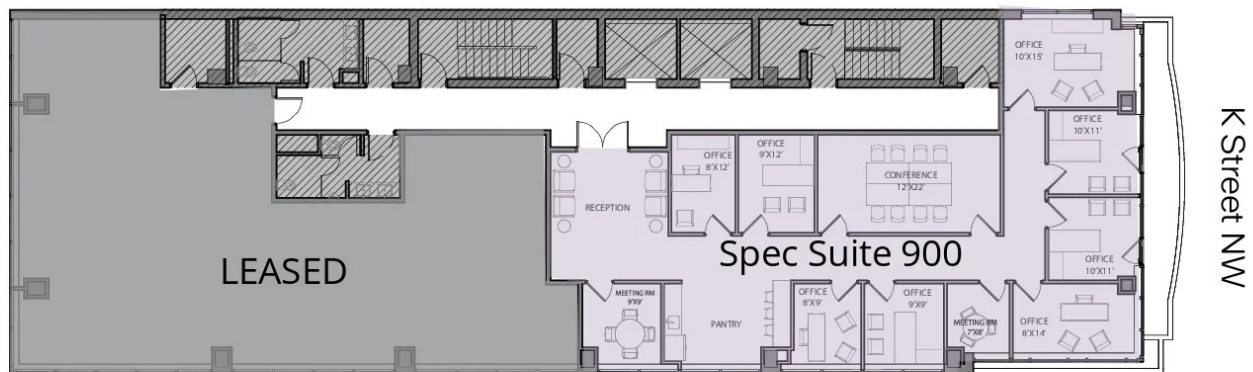
Lincoln

1420 K STREET NW

Washington, DC 20005

9th Floor

2,561 SF



Suite	Size	Lease Rate	Description
■ Spec Suite 900	2,561 SF	\$38.00 FS	Available immediately featuring a private balcony with views of K Street.

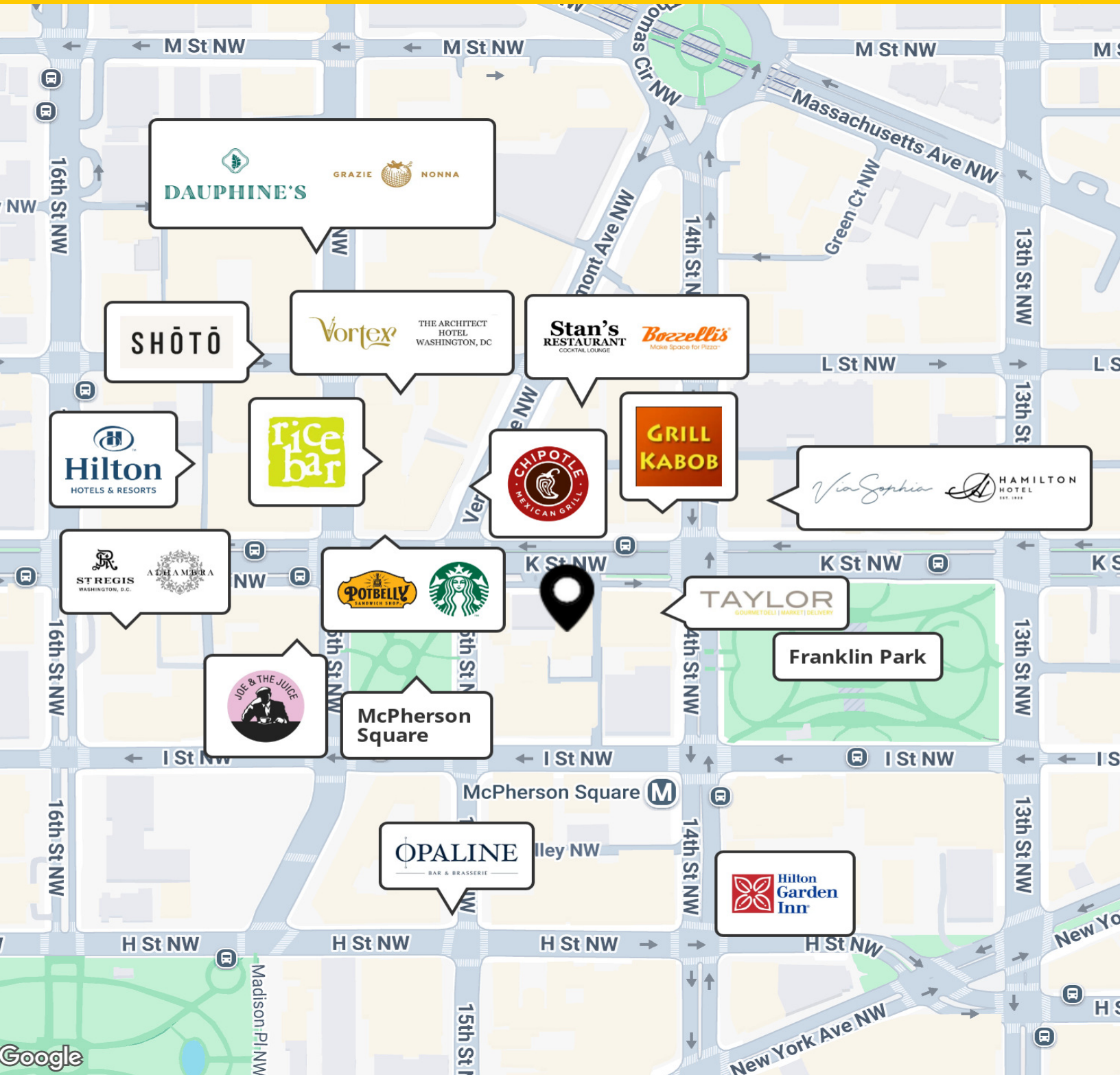
Adam Biberaj 202.513.6736 abiberaj@lpc.com	Merrill Turnbull 202.513.6713 mturnbull@lpc.com	McKay Elliott 202.513.6724 melliott@lpc.com	Tim Whitebread 202.513.6712 twhitebread@lpc.com
---	--	--	--

Lincoln

1420 K STREET NW

Washington, DC 20005

Nearby Amenities



Adam Biberaj
202.513.6736
abiberaj@lpc.com

Merrill Turnbull
202.513.6713
mturnbull@lpc.com

McKay Elliott
202.513.6724
melliott@lpc.com

Tim Whitebread
202.513.6712
twhitebread@lpc.com

Lincoln



1420 K STREET NW

Washington, DC 20005

Leasing Information:
202.513.6700

Adam Biberaj
202.513.6736
abiberaj@lpc.com

Merrill Turnbull
202.513.6713
mturnbull@lpc.com

McKay Elliott
202.513.6724
melliott@lpc.com

Tim Whitebread
202.513.6712
twhitebread@lpc.com

Lincoln

101 Constitution Avenue NW
Suite 325 East
Washington, DC 20001

www.lpc.com