



GRANADA BUILDINGS

672 La Fayette Park Place, Los Angeles, CA 90057

JMF DEVELOPMENT



PROPERTY OVERVIEW

The Granada Buildings are an imaginative, Mediterranean and Spanish Colonial Revival style block-long complex consisting of four courtyard-connected structures encompassing over 60,000 square feet. The two-story studios were initially built as live-work spaces in 1927 by a Kentucky-born journalist turned developer, Franklin Harper.

Over the years, the Granada Buildings have developed a reputation as one of LA's creative centers, housing some of its best-known architects, artists, and designers. The complex was renovated and reopened in 1990 as 42 office/studio suites.

In the Westlake District of Downtown Los Angeles, a historic area adjacent to Lafayette Park, tenants will enjoy an impressive city skyline and a peaceful, picturesque park. The Granada Buildings offer easy connectivity to the 10, 110, and 101 Freeways, providing efficient travel times to the office. Just two miles from Downtown Los Angeles, this destination is within reach of all the retail, dining, and entertainment attractions this sprawling city offers.

HIGHLIGHTS

Prime LA Location: Discover the vibrant heart of Los Angeles at 672 S La Fayette Park Pl, with easy access to cultural attractions and business hubs.

Timeless Charm: Step into a historic gem with captivating architectural details that bring a touch of elegance to the work environment.

Versatile Office Spaces: Find the perfect fit for businesses through a range of flexible floor plans and configurations to suit tenant needs.

Scenic Views: Enjoy sweeping vistas of the city skyline or the serene Lafayette Park, adding inspiration to your everyday work experience.

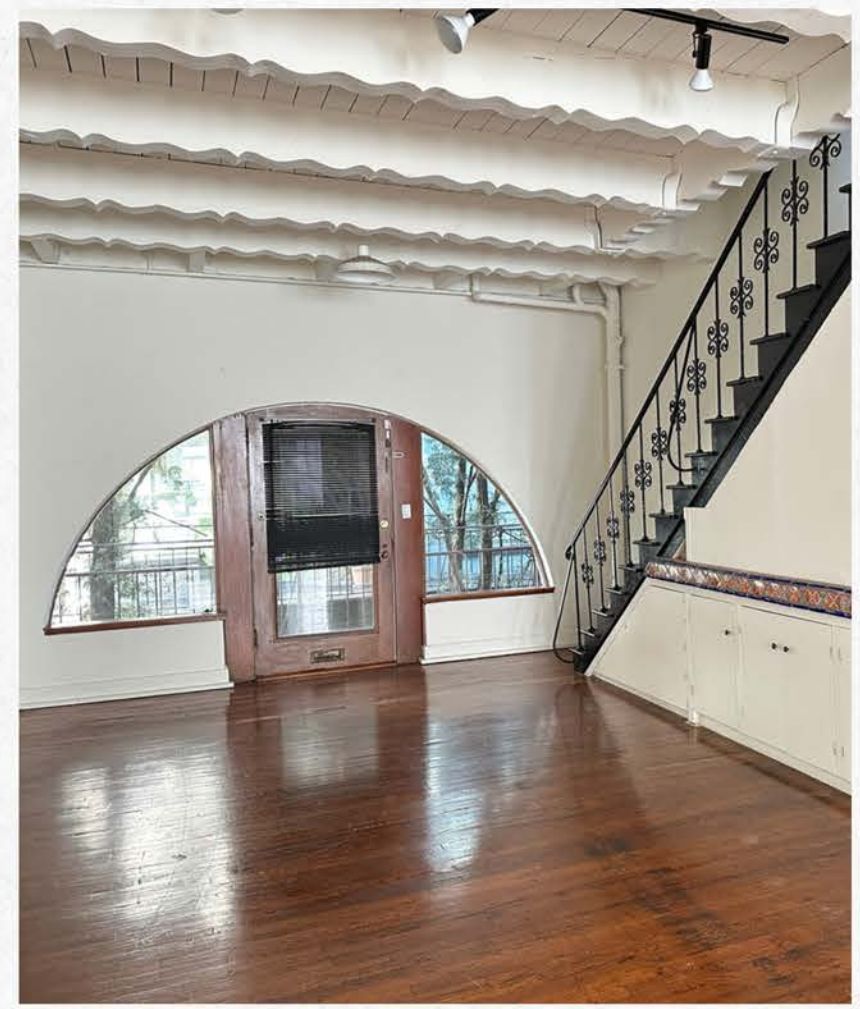
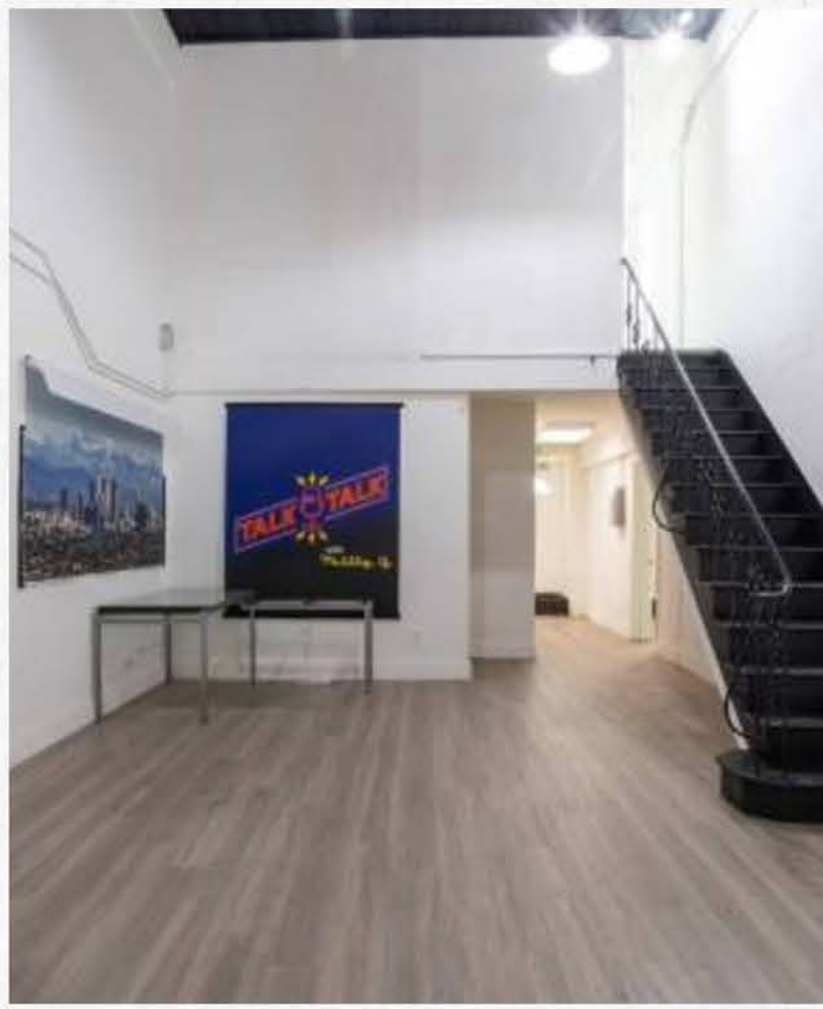
Convenient Parking: Benefit from on-site parking, ensuring hassle-free accessibility for tenants and visitors, making your daily commute a breeze.

Outdoor Space: Experience ample outdoor space in the block-long complex of four courtyard-connected structures and balconies on select suites.



PROPERTY PHOTOS





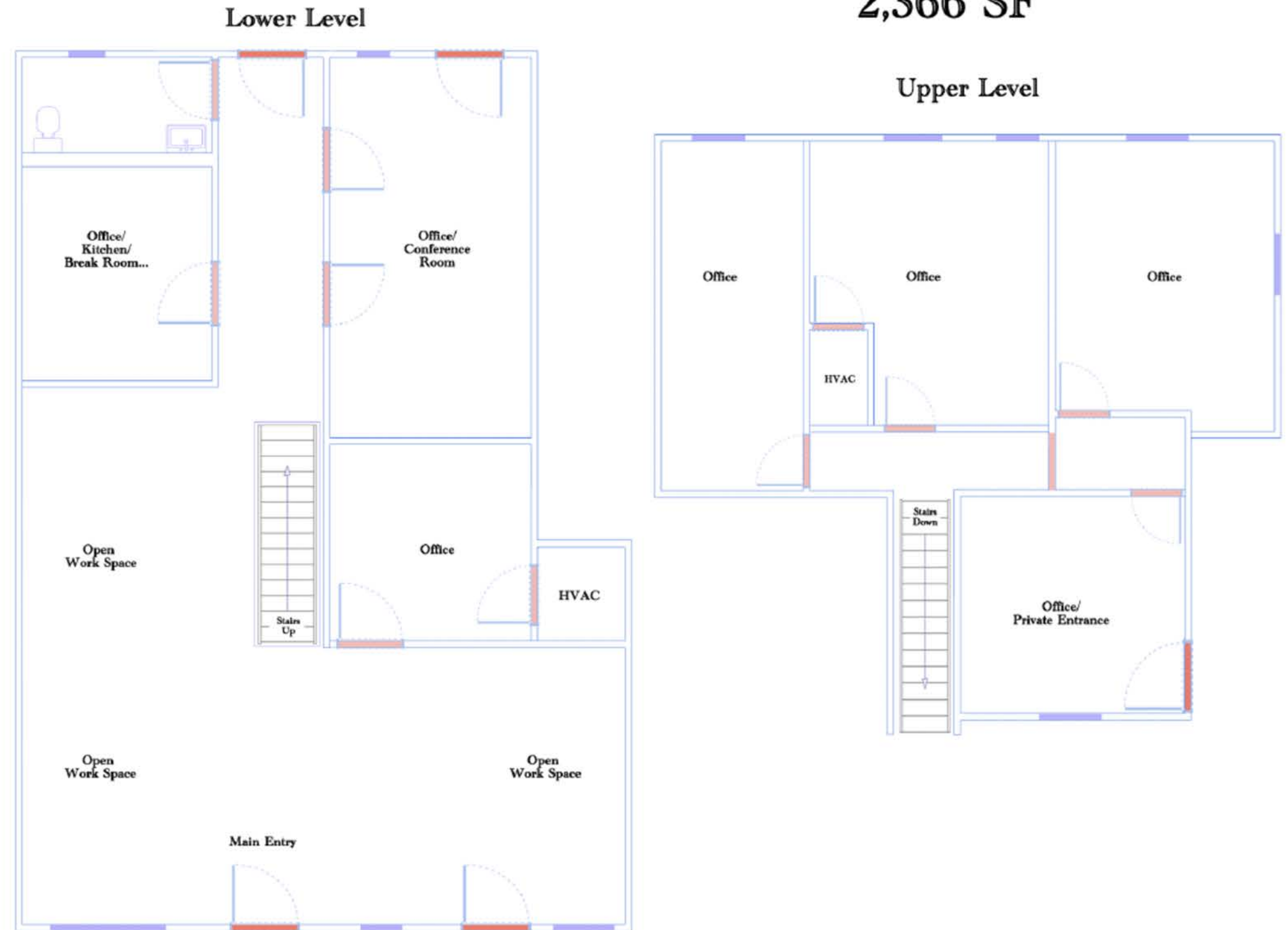
SUITE 4-5

Ideal for larger teams, this suite includes 5 private offices, a conference room seating 10, a kitchenette, and a versatile open workspace. With high ceilings, plenty of natural light, and a private parking lot entrance, it's a perfect fit for collaborative work.

Space Available: 2,366 SF
Date Available: Now
Service Type: Modified Gross
Space Type: Creative Office
Space Use: Administrative Office/Art Studio
Lease Term: 1-3 Years



The Granada Buildings Suite 4-5 2,366 SF



SUITE 8-9

With two large open spaces sectioned off, this suite is great for those who like to customize their space with their own layout. This space also features three private offices and a large kitchen on the upper level. Ideal for a showroom or collaborative team work.

Space Available: 2,410 SF
Date Available: Now
Service Type: Modified Gross
Space Type: Creative Office
Space Use: Administrative Office/Art Studio
Lease Term: 1-3 Years



The Granada Buildings Suite 8-9 2,410 sf



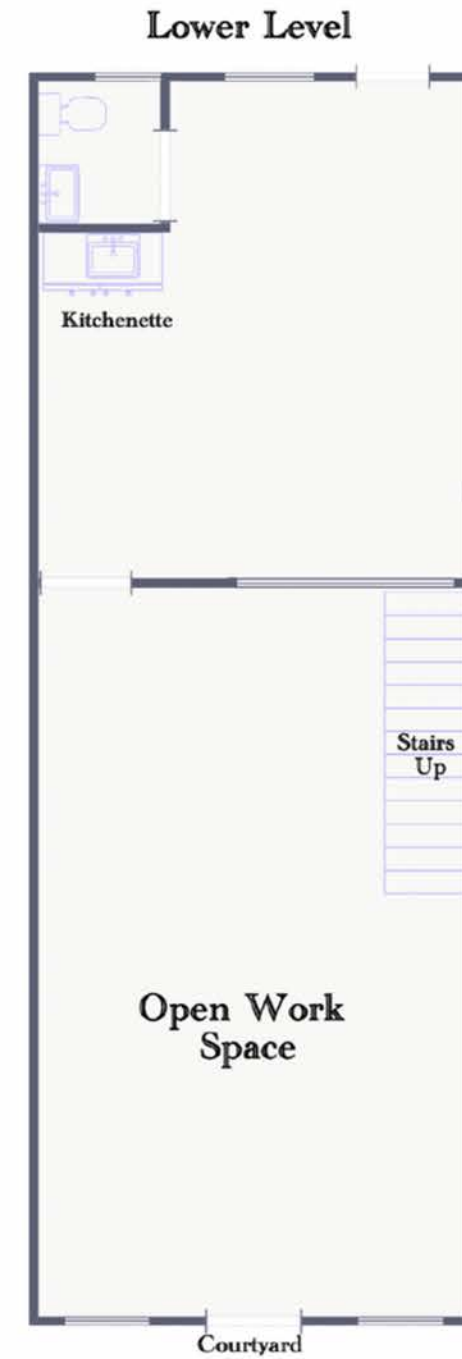
SUITE 14

This suite is perfect for a solo artist or small team, with ample open workspace, 1 spacious private office upstairs, and a private kitchenette. Ample natural light and access to shared courtyard.

Space Available: 1,205 SF
Date Available: Now
Service Type: Modified Gross
Space Type: Creative Office
Space Use: Administrative Office/Art Studio
Lease Term: 1-3 Years



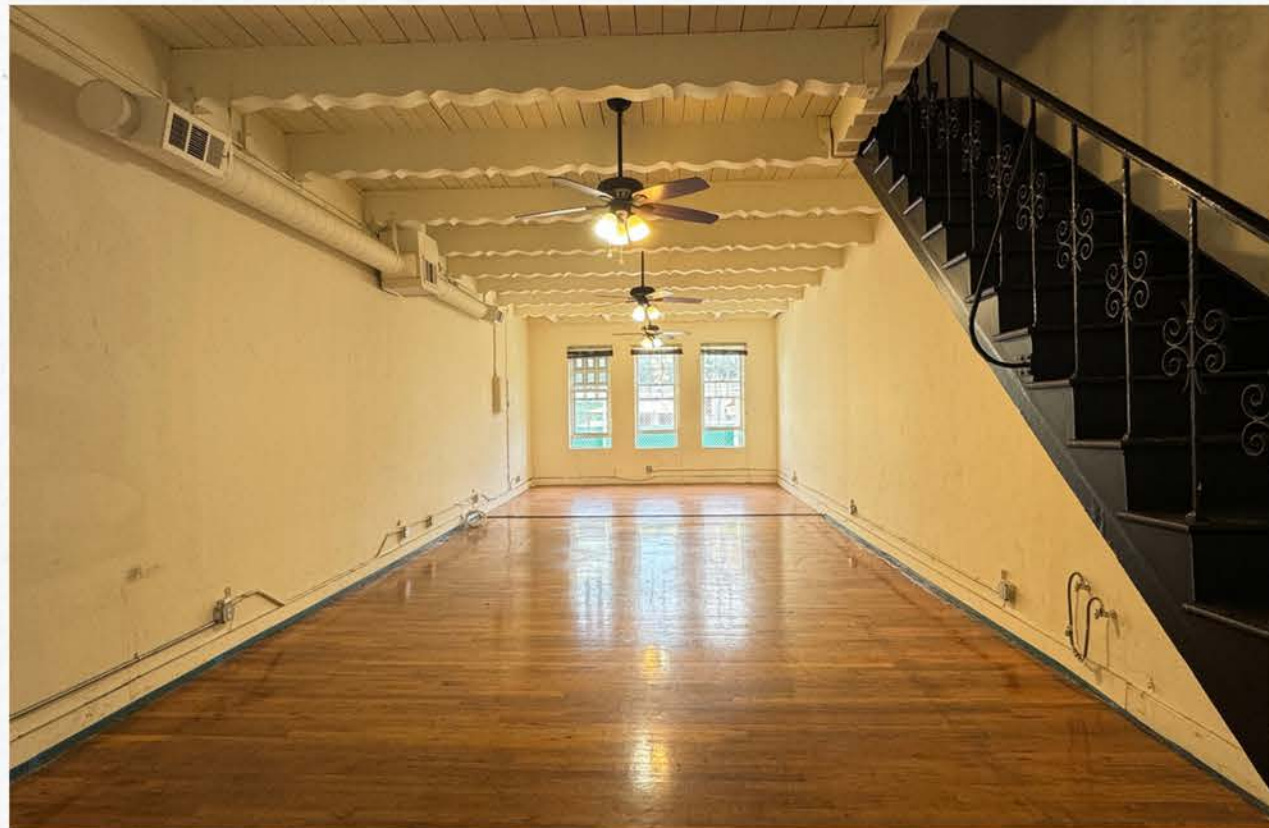
The Granada Buildings Suite 14 1,205 SF



SUITE 39

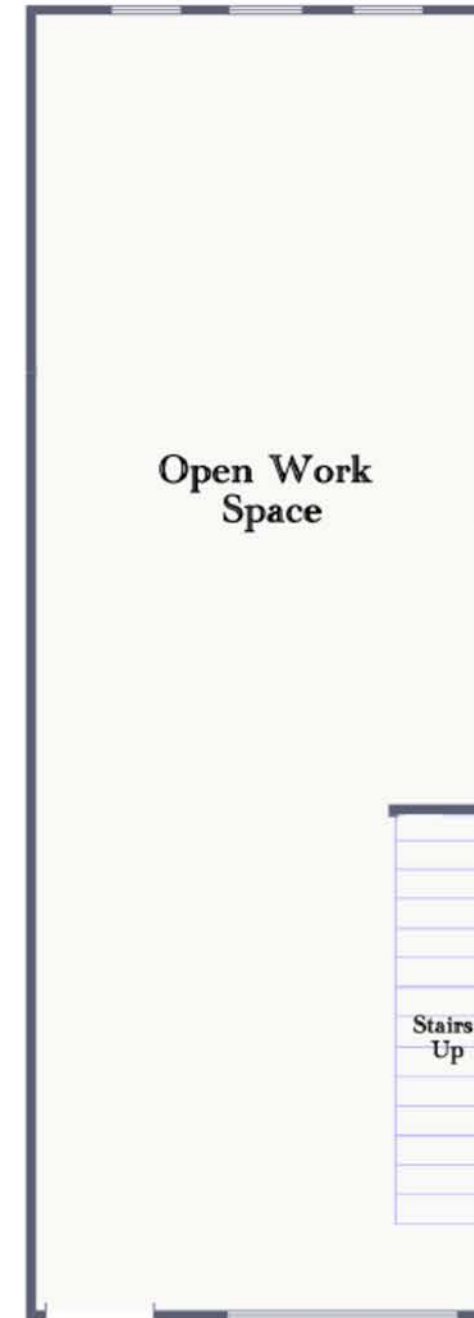
A great fit for smaller teams, this suite has 2 private offices, a kitchenette, and spacious open workspaces that can be utilized in many ways. The suite features high ceilings and ample natural light, as well as a private balcony to the lower level.

Space Available: 1,350 SF
Date Available: Now
Service Type: Modified Gross
Space Type: Creative Office
Space Use: Administrative Office/Art Studio
Lease Term: 1-3 Years



The Granada Buildings Suite 39 1,350 SF

Lower Level



Upper Level





CONTACT DETAILS

ARSHAK PAPAZYAN
LEASING MANAGER

(213) 654-5739

arshak.papazyan@jmfdevelopment.com
leasing@jmfdevelopment.com