

Office/Warehouse For Sublease

8,036 +/- Sq.Ft. Office/Warehouse Space
675 Progress Center Ave, Suite C
Lawrenceville, GA 30043



Gwinnett Progress Center

Offering Summary

Lease Rate:	\$12.00 SF/yr (NNN)
Available SF:	8,036 SF

- 4,954 SF of Warehouse Space
- 3,062 SF of Office Space
- Dock-High & Drive-In Loading
- 22' Clear Height
- Fully Sprinklered
- Ample Parking
- Located within Gwinnett Progress Center, a 1,500-acre master-planned business park
- Immediate access to GA-316 (±0.25 miles)
- ±8.5 miles to I-85

Get more information

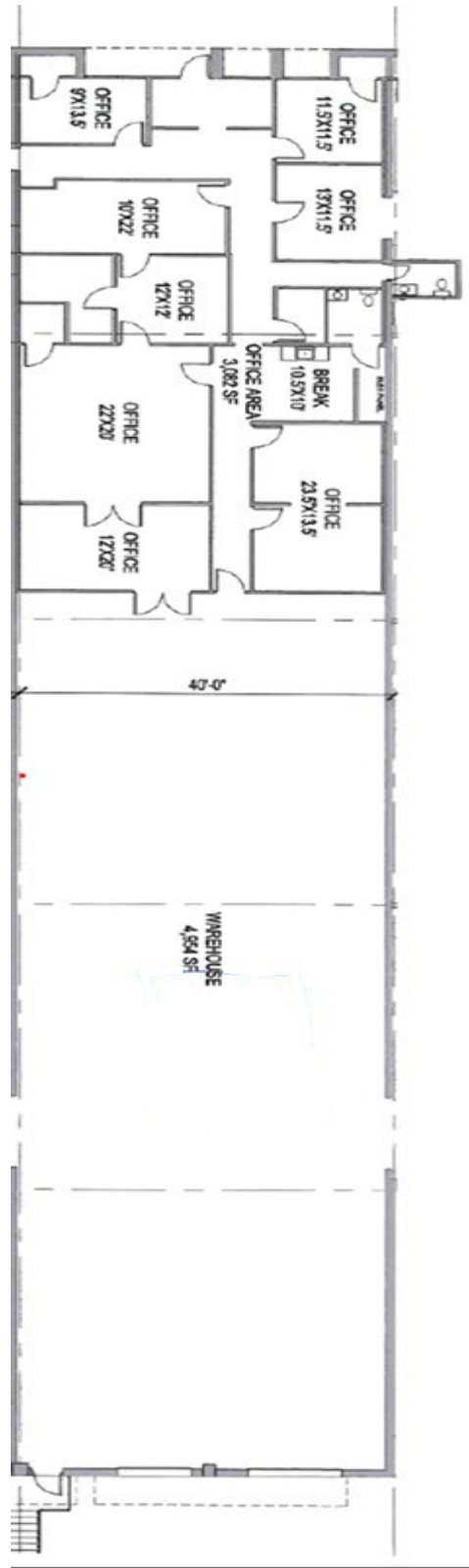
Frank N. Simpson, CCIM SIOR

Principal, Managing Director
D 770 532 9911

frank.simpson@avisonyoung.com

Suite C Floor Plan

675 Progress Center Ave



**AVISON
YOUNG**

Frank N. Simpson, CCIM SIOR
Principal, Managing Director
D 770 532 9911
frank.simpson@avisonyoung.com

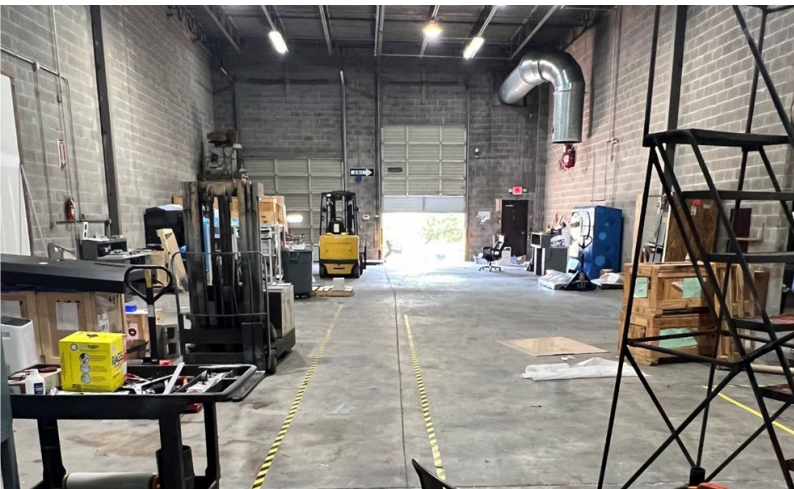
Avison Young - Gainesville | 425 Spring Street SE, Suite 200 | Gainesville, GA 30501

© 2022. Avison Young - Gainesville. Information contained herein was obtained from sources deemed reliable and, while thought to be correct, have not been verified.

Avison Young - Gainesville does not guarantee the accuracy or completeness of the information presented, nor assumes any responsibility or liability for any errors or omissions therein.

Suite C Photos

675 Progress Center Ave



**AVISON
YOUNG**

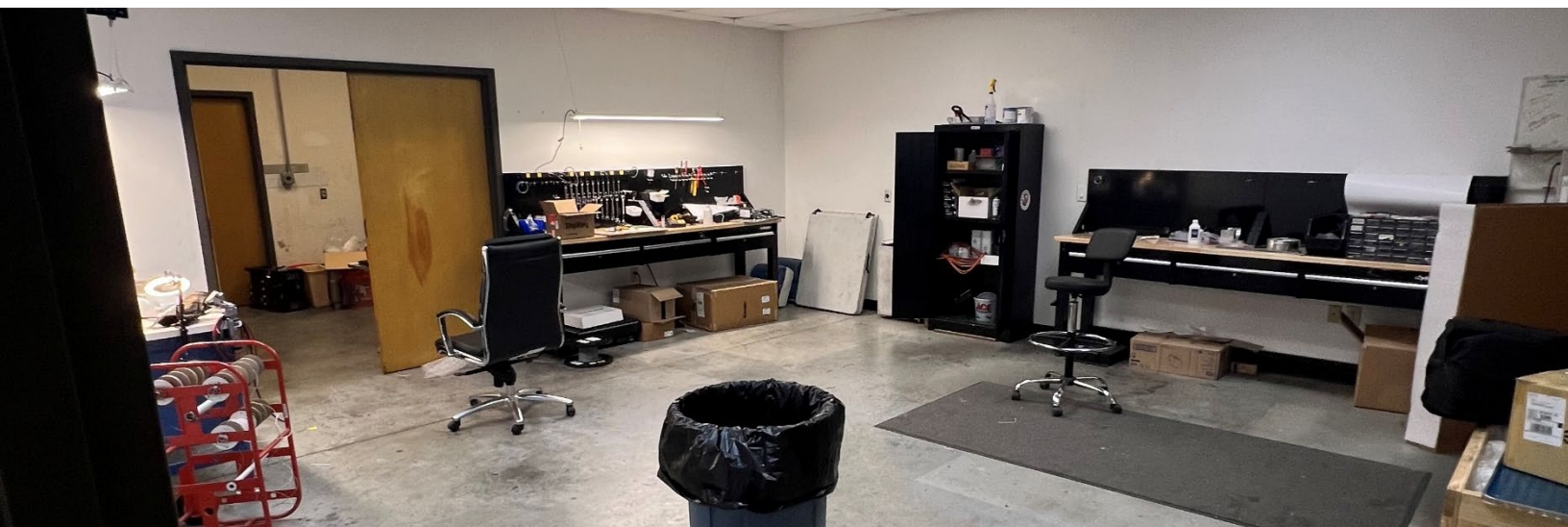
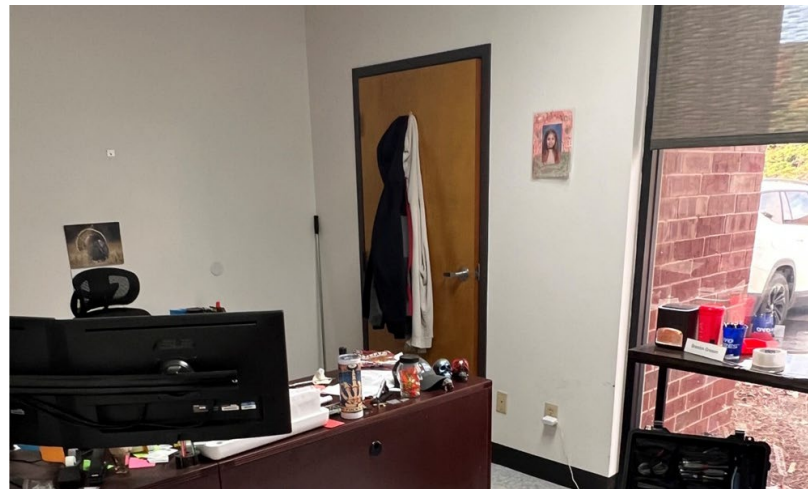
Frank N. Simpson, CCIM SIOR
Principal, Managing Director
D 770 532 9911
frank.simpson@avisonyoung.com

Avison Young - Gainesville | 425 Spring Street SE, Suite 200 | Gainesville, GA 30501

© 2022. Avison Young - Gainesville. Information contained herein was obtained from sources deemed reliable and, while thought to be correct, have not been verified. Avison Young - Gainesville does not guarantee the accuracy or completeness of the information presented, nor assumes any responsibility or liability for any errors or omissions therein.

Suite C Photos

675 Progress Center Ave



**AVISON
YOUNG**

Frank N. Simpson, CCIM SIOR
Principal, Managing Director
D 770 532 9911
frank.simpson@avisonyoung.com

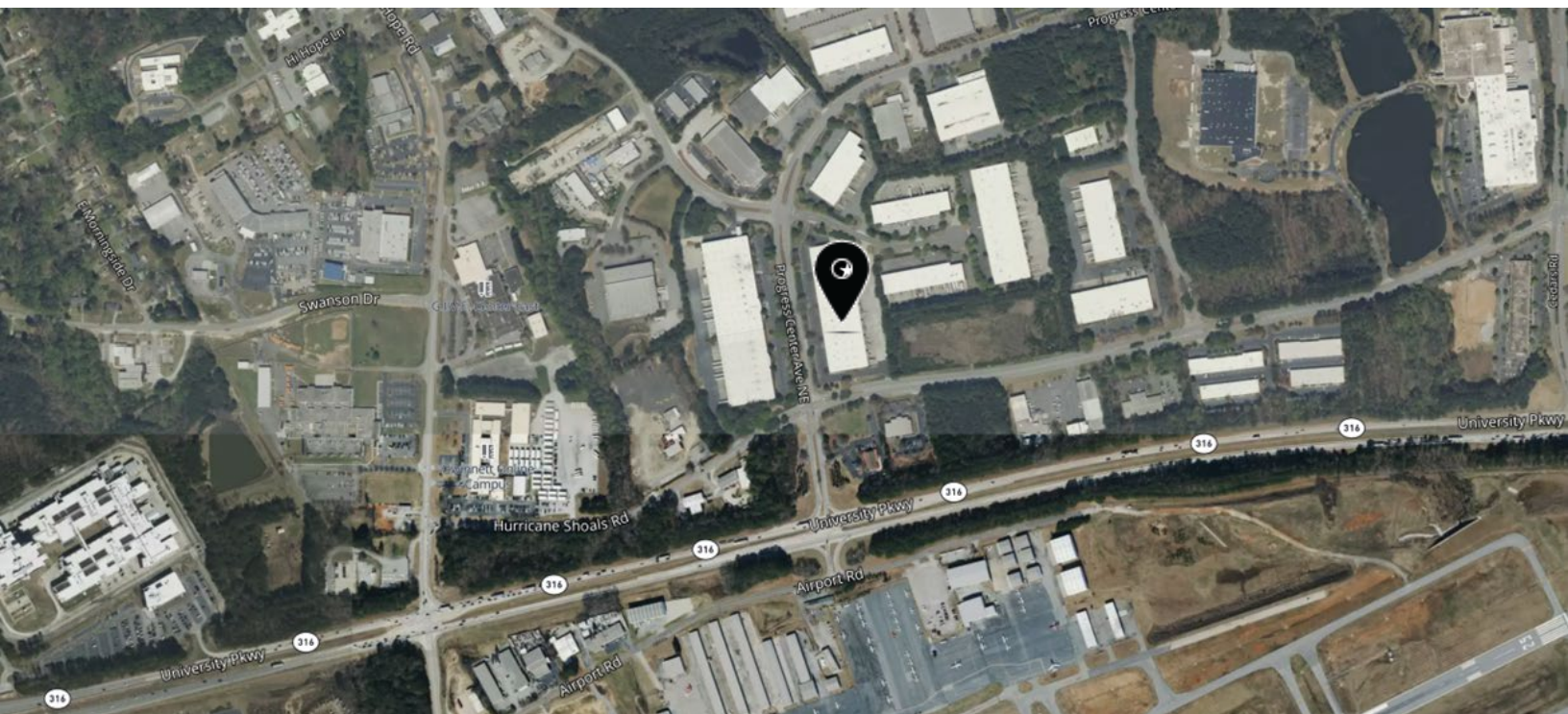
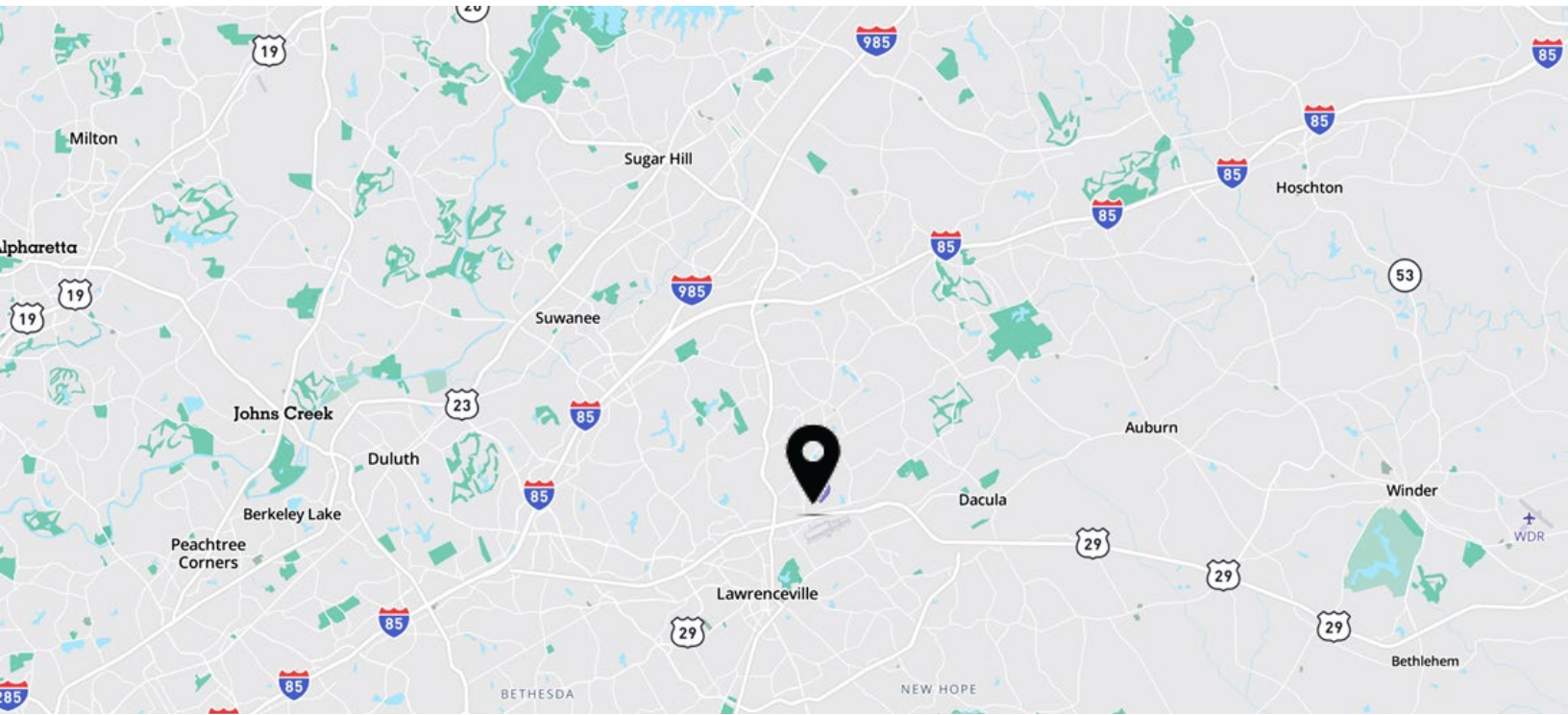
Avison Young - Gainesville | 425 Spring Street SE, Suite 200 | Gainesville, GA 30501

© 2022. Avison Young - Gainesville. Information contained herein was obtained from sources deemed reliable and, while thought to be correct, have not been verified.

Avison Young - Gainesville does not guarantee the accuracy or completeness of the information presented, nor assumes any responsibility or liability for any errors or omissions therein.

Location Maps

675 Progress Center Ave



Frank N. Simpson, CCIM SIOR
Principal, Managing Director
D 770 532 9911
frank.simpson@avisonyoung.com

Avison Young - Gainesville | 425 Spring Street SE, Suite 200 | Gainesville, GA 30501

© 2022. Avison Young - Gainesville. Information contained herein was obtained from sources deemed reliable and, while thought to be correct, have not been verified.

Avison Young - Gainesville does not guarantee the accuracy or completeness of the information presented, nor assumes any responsibility or liability for any errors or omissions therein.



Let's talk.

Frank N. Simpson, CCIM SIOR

Principal, Managing Director

D 770 532 9911

frank.simpson@avisonyoung.com

Avison Young - Gainesville
425 Spring Street SE, Suite 200 | Gainesville, GA 30501

© 2022. Avison Young - Gainesville. Information contained herein was obtained from sources deemed reliable and, while thought to be correct, have not been verified. Avison Young - Gainesville does not guarantee the accuracy or completeness of the information presented, nor assumes any responsibility or liability for any errors or omissions therein.

**AVISON
YOUNG**
