



FOR LEASE

■ 2842 SE Federal Hwy

2842 SE Federal Hwy

Stuart, FL 34994

PROPERTY OVERVIEW

1,500 square foot office/medical suite conveniently located at the corner of US1 and Luckhardt Street. The space features a large reception and waiting area, two private offices, open work areas suitable for various configurations, and two restrooms, making it ideal for medical or professional use. On building and monument signage.

OFFERING SUMMARY

Building Size:	9,080 SF
Land Size:	0.89 Acres
Available Size:	1,500 - 4,050 SF
Zoning:	B-2 Business-General
AADT:	36,000



TYLER RAYNES
VICE PRESIDENT/BROKER
Mobile 772.418.1946
tyler@slccommercial.com

772.220.4096 | slccommercial.com

LEASE RATE

Negotiable



SLC Commercial
Realty & Development

The information contained herein has been obtained from sources believed to be reliable, but no warranty or representation, expressed or implied, is made. All sizes and dimensions are approximate. Any prospective buyer should exercise prudence and verify independently all significant data and property information. This is NOT an offer of sub-agency or co-brokerage.

Property Details & Highlights

OCEAN GATE PLAZA

FOR LEASE

Property Name:	Ocean Gate Plaza
Property Address:	2830 SE Federal Hwy, Stuart, FL 34994
Property Type:	Medical
APN:	38-38-41-002-018-00050-3
Lot Size:	0.89 AC
Building Size:	9,080 SF
Building Class:	B
Zoning:	B-2 Business-General
Cross Streets:	SE Federal Highway & SE Luckhardt Street
Year Built:	1981

LOCATION OVERVIEW

Ocean Gate Plaza is a well-positioned neighborhood retail and professional center in the heart of Stuart, Florida. The property offers excellent visibility and convenient access, making it ideal for medical, professional office, and service-oriented tenants. Located at a high-traffic intersection of US-1 and Lockhardt St, Ocean Gate Plaza provides a clean, well-maintained environment with excellent exposure and easy access for both clients and staff.



LEASE HIGHLIGHTS

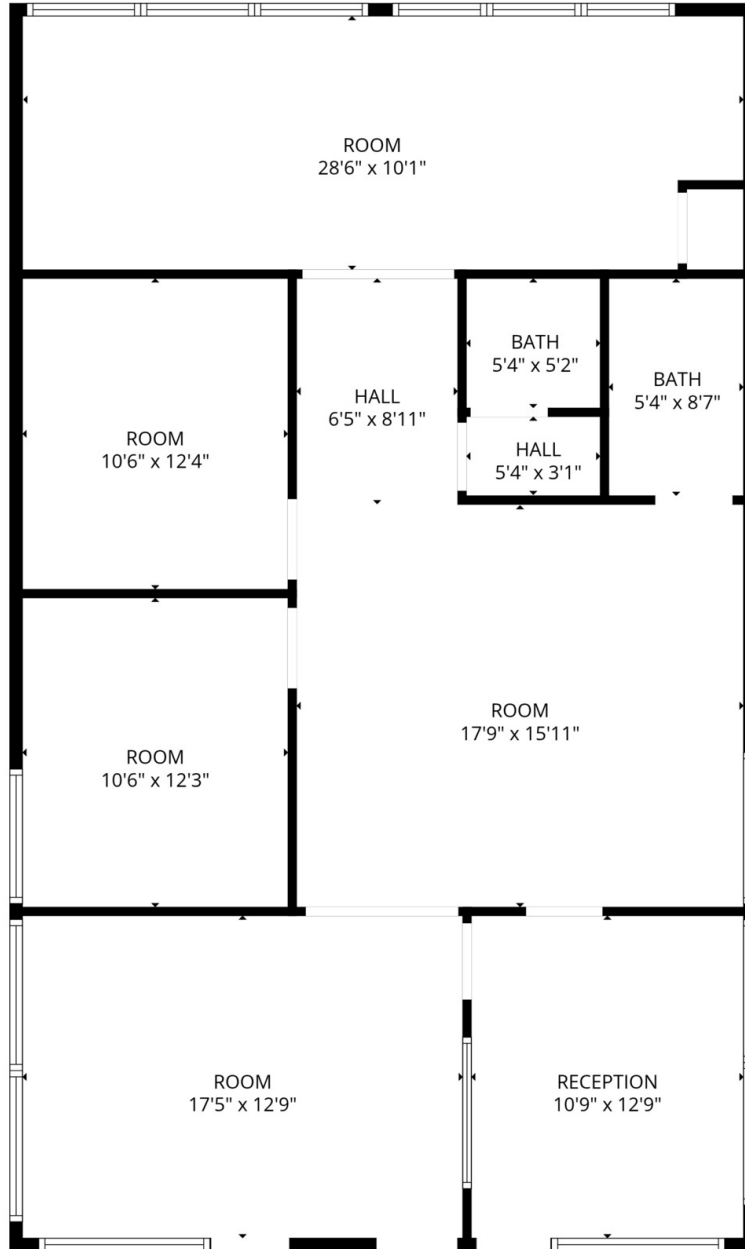
- US1 exposure
- Next to Jupiter Medical
- Major corridor

Additional Photos

OCEAN GATE PLAZA

FOR LEASE





FLOOR PLAN CREATED BY CUBICASA APP. MEASUREMENTS DEEMED HIGHLY RELIABLE BUT NOT GUARANTEED.

Retailer Map

OCEAN GATE PLAZA

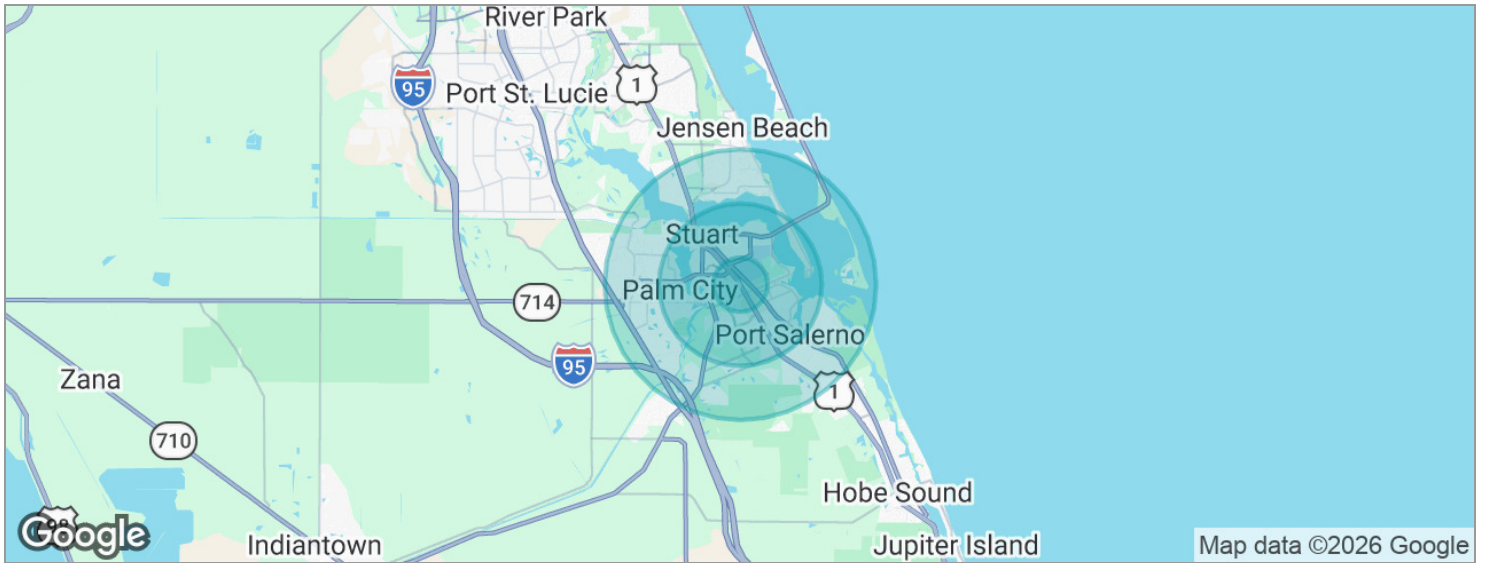
FOR LEASE



Demographics Map

OCEAN GATE PLAZA

FOR LEASE



POPULATION	1 MILE	3 MILES	5 MILES
Total population	6,354	48,278	98,477
Median age	46.8	50.2	51.7
Median age (Male)	44.5	50.0	50.7
Median age (Female)	52.2	50.4	52.7
HOUSEHOLDS & INCOME	1 MILE	3 MILES	5 MILES
Total households	2,999	21,170	43,068
# of persons per HH	2.1	2.3	2.3
Average HH income	\$82,530	\$101,078	\$114,329
Average house value	\$332,476	\$413,475	\$451,188

* Demographic data derived from 2020 ACS - US Census

Disclaimer

OCEAN GATE PLAZA

FOR LEASE

This presentation package has been prepared by the company representing the property for informational purposes only and does not purport to contain all information necessary to reach a purchase decision.

The information herein has been given by the Owner or other sources believed to be reliable, but it has not necessarily been independently verified by the Company representing the property and neither its accuracy nor its completeness is guaranteed.

This information is subject to errors, omissions, changes, prior sale or withdrawal without notice by the Company representing the property and does not constitute a recommendation, endorsement or advice as to the value for the purchase of any property. Each prospective lessee or purchaser is to rely upon his/her own investigation, evaluation and judgment as to the advisability of leasing or purchasing the property.

Furthermore, any financial information and calculations presented in this analysis are believed to be accurate, but are not guaranteed and are intended for the purposes of projection and analysis only. The user of this financial information contained herein should consult a tax specialist concerning his/her particular circumstances before making any investment.