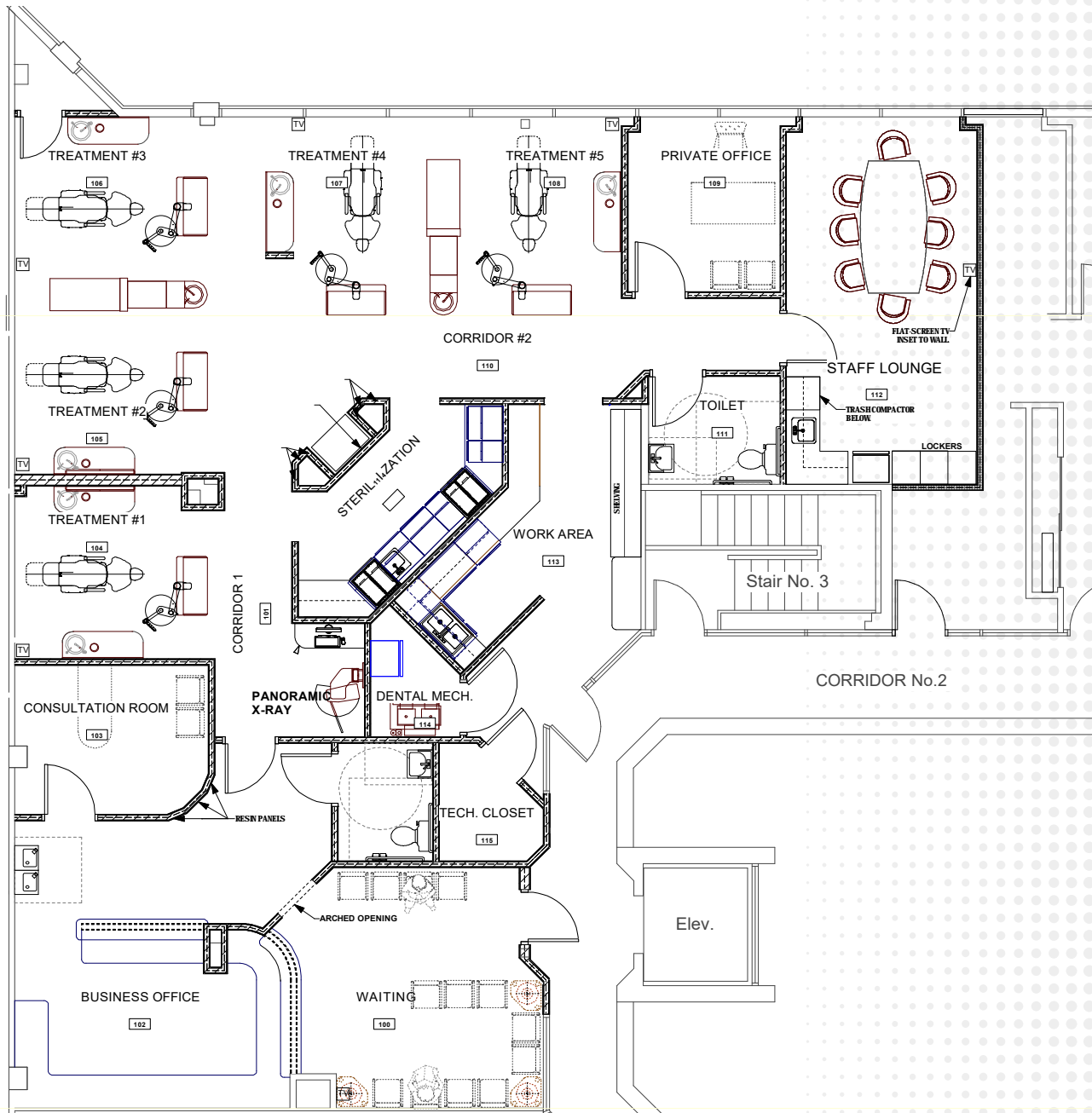


DANIEL MEDICAL OFFICE BUILDING

2100 ALOMA AVENUE
WINTER PARK, FL 32792

Suite 200 | 2,969 SF



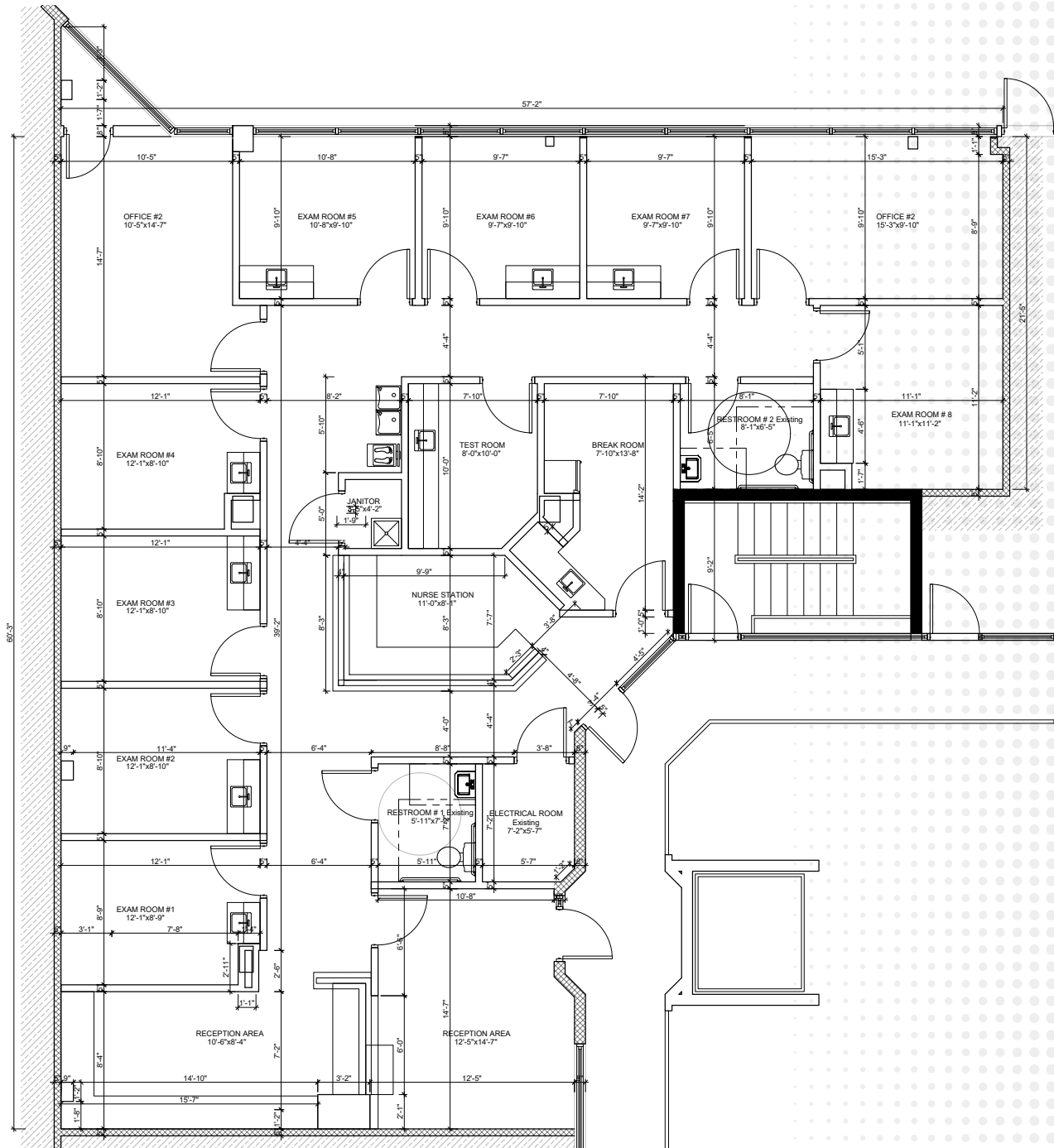
Building owned and managed by
HEALTHCARE REALTY

ROBERT KELLOGG, CCIM
Senior Director
407 541 4416
robert.kellogg@cushwake.com

DANIEL MEDICAL OFFICE BUILDING

2100 ALOMA AVENUE
WINTER PARK, FL 32792

Suite 200 | 2,969 SF (proposed concept plan rendering)



Building owned and managed by
HEALTHCARE REALTY

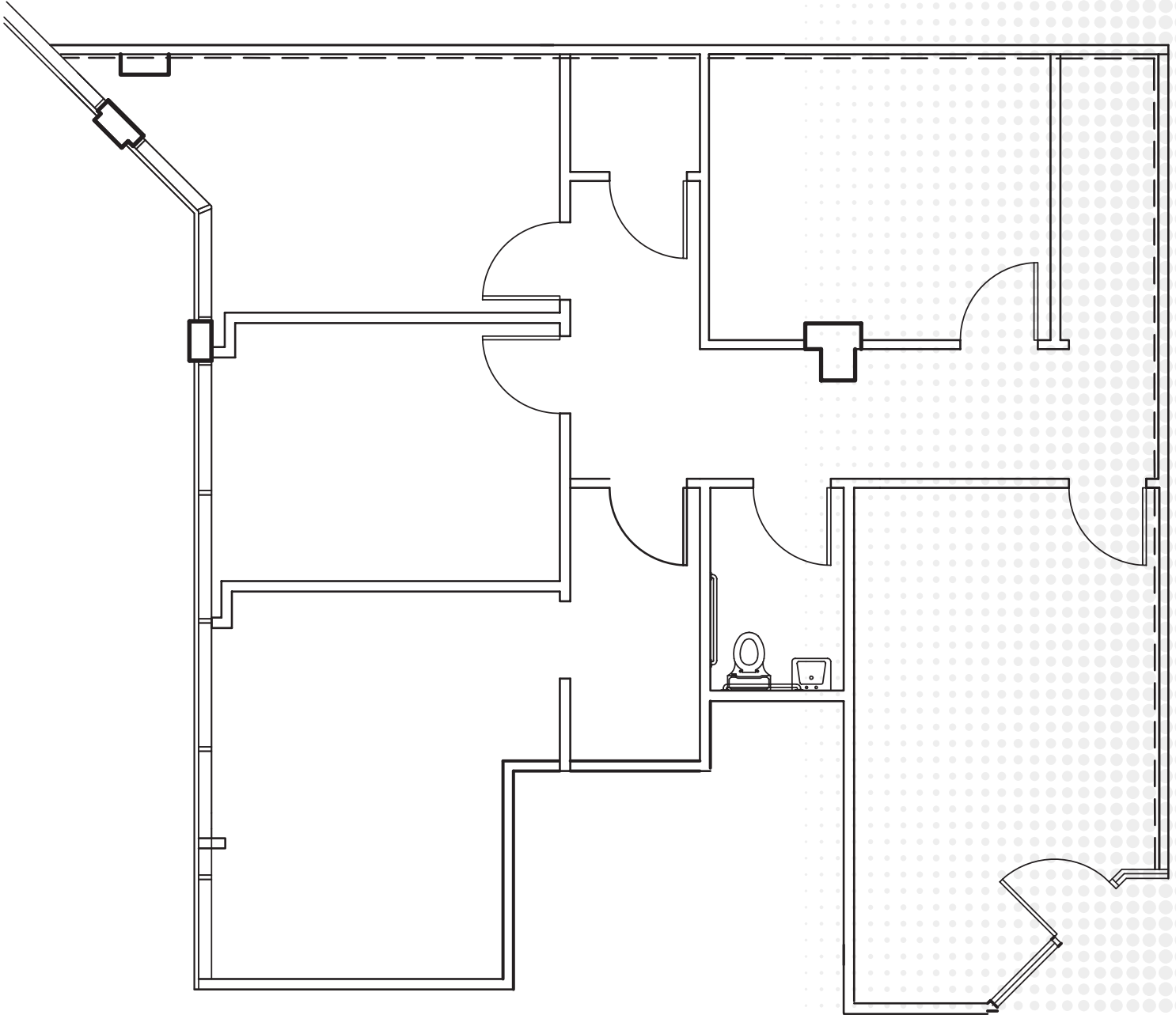
ROBERT KELLOGG, CCIM
Managing Director
407 541 4416
robert.kellogg@cushwake.com

DANIEL MEDICAL

OFFICE BUILDING

2100 ALOMA AVENUE
WINTER PARK, FL 32792

Suite 204 | 1,515 SF



Building owned and managed by
HEALTHCARE REALTY

ROBERT KELLOGG, CCIM
Managing Director
407 541 4416
robert.kellogg@cushwake.com