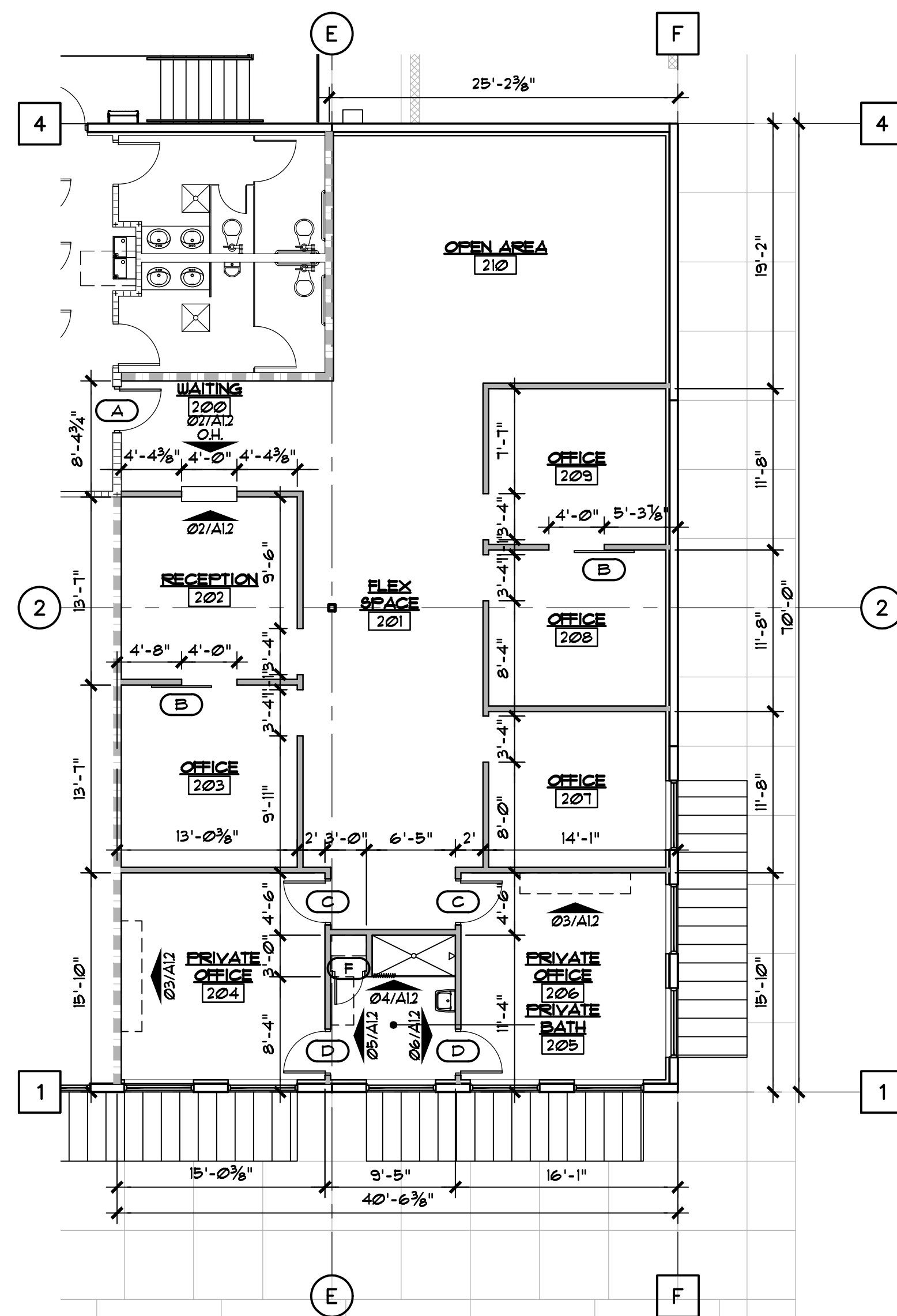
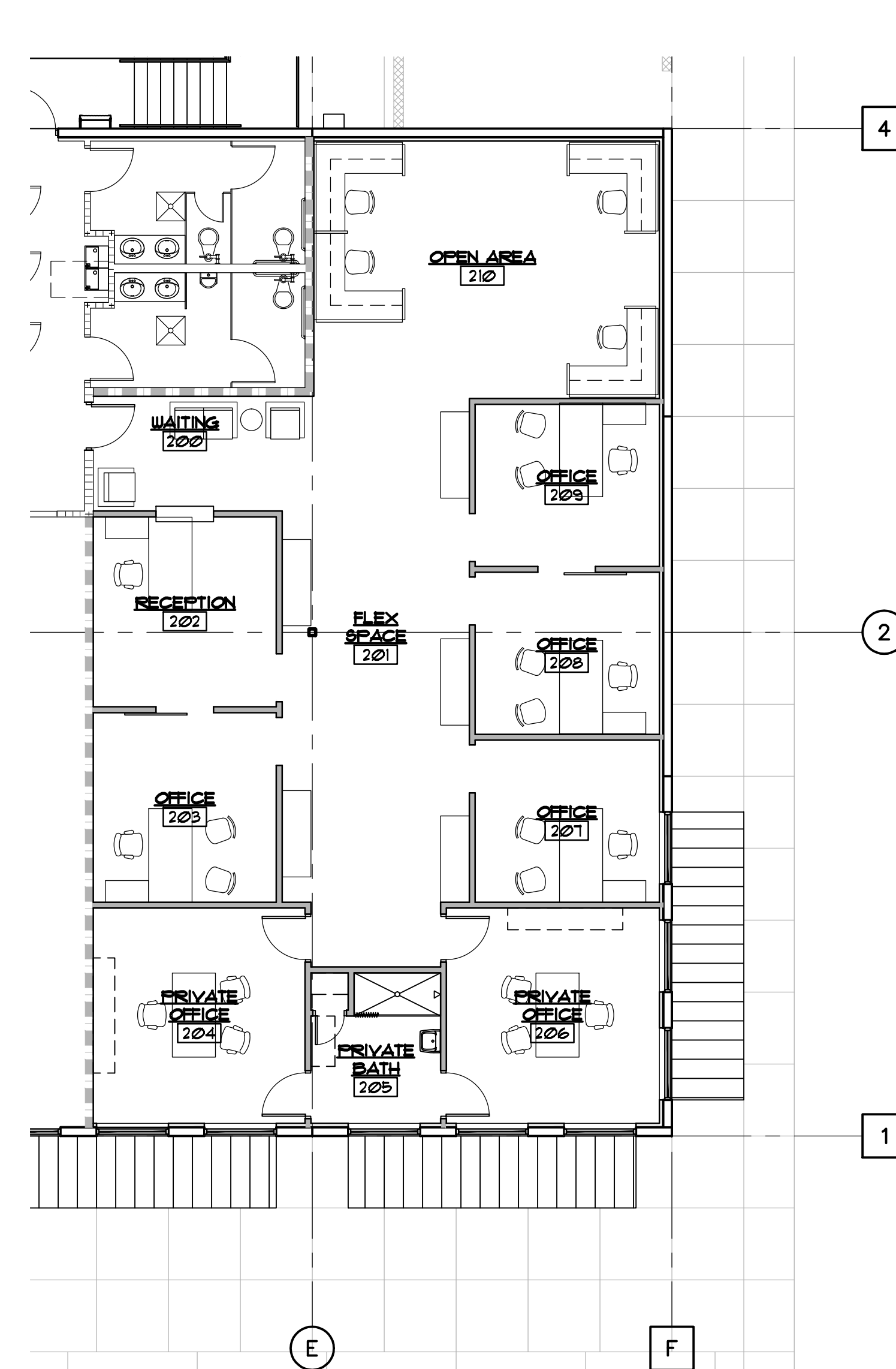


**01 LIFE SAFETY PLAN**  
SCALE: 1/8" = 1'-0"



**02 FLOOR PLAN**  
SCALE: 1/8" = 1'-0"



**03 FURNITURE PLAN**  
SCALE: 1/8" = 1'-0"

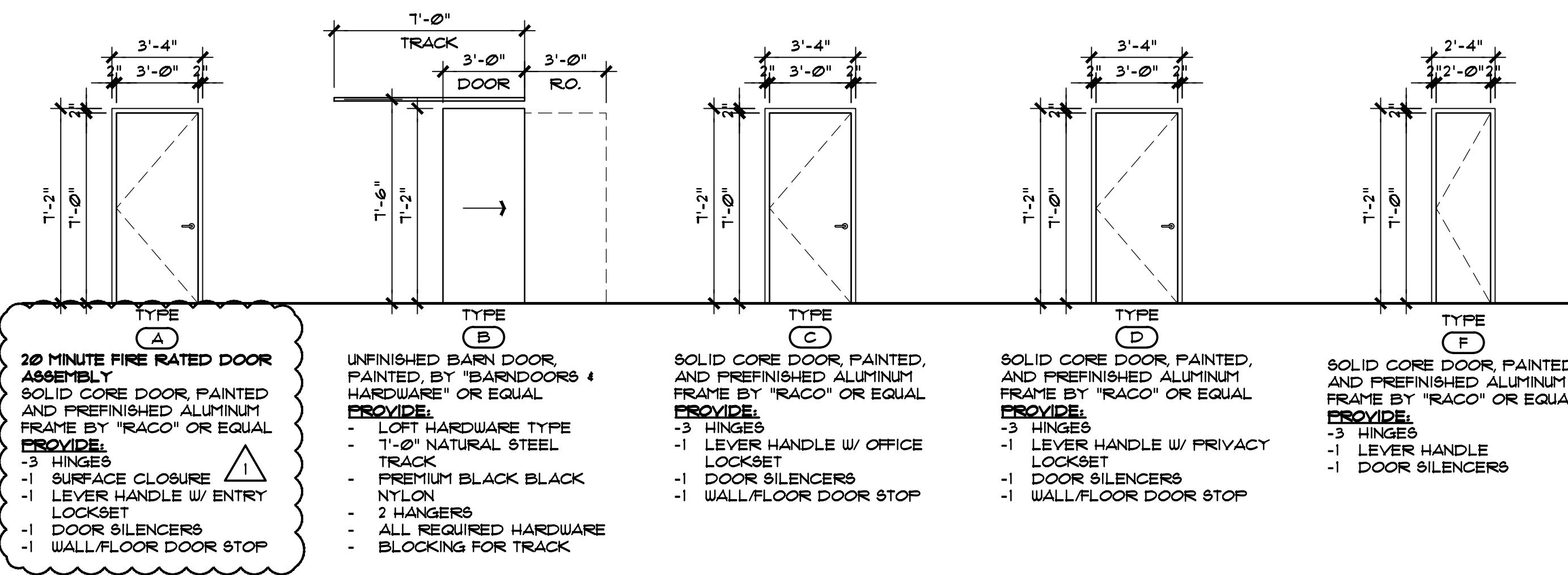


**WALL CONSTRUCTION LEGEND:**

- P1** EXISTING 1-LAYER OF 5/8" TYPE "X" GYPSUM WALL BOARDED ON 1 5/8" GALVANIZED METAL STUDS @ 16" O.C. W/ R-5 CONTINUOUS RIGID INSULATION ON BOTTOM OF STRUCTURAL METAL DECK ON FACE OF EXISTING REINFORCED CONCRETE TILT WALL.
- P2** 1-LAYER OF 5/8" TYPE "X" GYPSUM WALL BOARD (OR 5/8" CEMENT BOARD IN ALL WET AREAS W/ SOUND ATTENUATION INSULATION) ON BOTH SIDES OF 3 5/8" GALVANIZED METAL STUDS @ 16" O.C. TO BOTTOM OF EXISTING STRUCTURAL METAL DECK.

**GENERAL NOTES**

1. GENERAL CONTRACTOR SHALL VERIFY ALL DIMENSIONS AND EXISTING CONDITIONS AT THE JOB SITE BEFORE COMMENCING ANY PHASE OF THE WORK. ADJUSTMENTS FOR FIT AND COORDINATION SHALL BE MADE AT NO ADDITIONAL COST TO THE OWNER. NOTIFY ARCHITECT OF ANY CONFLICTS, DISCREPANCIES OR OMISSIONS PRIOR TO COMMENCEMENT OF THE CONTRACT WORK.
2. ALL INTERIOR DIMENSIONS ARE FROM FINISHED FACE OF WALL, UNLESS OTHERWISE NOTED. ALL EXTERIOR DIMENSIONS ARE FROM FACE OF STRUCTURAL LINE UNLESS OTHERWISE NOTED.
3. PROVIDE NECESSARY BLOCKING IN WALLS WHERE FIXTURES, SIGNAGE, SHELVING, CABINETS, COUNTERTOPS, CHAIR RAIL, CORNICE TRIM, AND OTHER MISCELLANEOUS ITEMS THAT REQUIRE A RIGID AND SECURE ATTACHMENT TO SAID WALL.
4. UNLESS NOTED OTHERWISE, ALL DOORS ARE TO BE LOCATED AT 4" FROM INSIDE FACE OF PARTITION TO EDGE OF JAMB.
5. CONTRACTOR TO SUPPLY ALL FIRE EXTINGUISHERS AND EMERGENCY SIGNAGE TO SATISFY LOCAL BUILDING CODES.
6. PROVIDE A DEFLECTION TRACK AT ALL WALLS THAT EXTEND TO BOTTOM OF STRUCTURAL METAL DECK, RE: 04/ALL.



**DOOR TYPES**  
SCALE: 1/4" = 1'-0"

**20 MINUTE FIRE RATED DOOR ASSEMBLY:**  
SOLID CORE DOOR, PAINTED AND PREFINISHED ALUMINUM FRAME BY "RACO" OR EQUAL PROVIDE:  
-3 HINGES  
-1 SURFACE CLOSURE  
-1 LEVER HANDLE W/ ENTRY LOCKSET  
-1 DOOR SILENCERS  
-1 WALL/FLOOR DOOR STOP

UNFINISHED BARN DOOR, PAINTED BY "BARD" DOORS & HARDWARE" OR EQUAL PROVIDE:  
- LOFT HARDWARE TYPE TRACK  
- 1"-0" NATURAL STEEL TRACK  
- PREMIUM BLACK BLACK NYLON  
- 2 HANGERS  
- ALL REQUIRED HARDWARE  
- BLOCKING FOR TRACK

SOLID CORE DOOR, PAINTED, AND PREFINISHED ALUMINUM FRAME BY "RACO" OR EQUAL PROVIDE:  
-3 HINGES  
-1 LEVER HANDLE W/ OFFICE LOCKSET  
-1 DOOR SILENCERS  
-1 WALL/FLOOR DOOR STOP

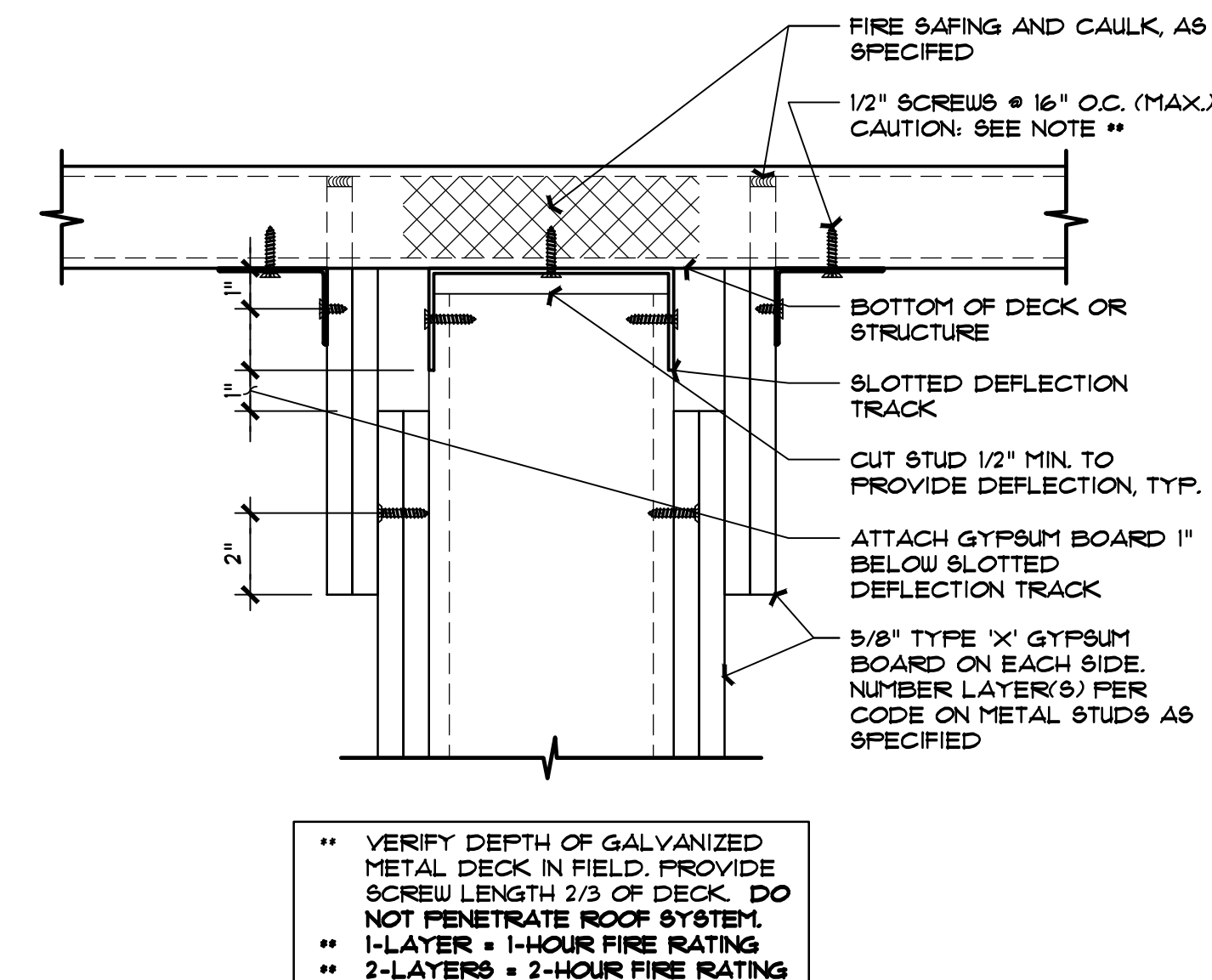
SOLID CORE DOOR, PAINTED, AND PREFINISHED ALUMINUM FRAME BY "RACO" OR EQUAL PROVIDE:  
-3 HINGES  
-1 LEVER HANDLE W/ PRIVACY LOCKSET  
-1 DOOR SILENCERS  
-1 WALL/FLOOR DOOR STOP

SOLID CORE DOOR, PAINTED, AND PREFINISHED ALUMINUM FRAME BY "RACO" OR EQUAL PROVIDE:  
-3 HINGES  
-1 LEVER HANDLE  
-1 DOOR SILENCERS

**ROOM FINISH SCHEDULE**

RM. #	ROOM NAME	FLOOR	BASE	WALLS	CEILING	REMARKS
200	WAITING	F-1	B-1	W-1	C-1	
201	FLEX SPACE	F-1	B-1	W-1	C-1	
202	RECEPTION	F-1	B-1	W-1	C-1	
203	OFFICE	F-1	B-1	W-1	C-1	
204	PRIVATE OFFICE	F-1	B-1	W-1	C-1	
205	PRIVATE BATH	F-2	B-2	W-1/W-2	C-2	
206	PRIVATE OFFICE	F-1	B-1	W-1	C-1	
207	OFFICE	F-1	B-1	W-1	C-1	
208	OFFICE	F-1	B-1	W-1	C-1	
209	OFFICE	F-1	B-1	W-1	C-1	
210	OPEN AREA	F-1	B-1	W-1	C-1	

**ROOM FINISH NOTES:**  
**FLOOR:**  
 F-1 CARPET  
 F-2 PORCELAIN TILE  
**BASE:**  
 B-1 4" VINYL COVE  
 B-2 PORCELAIN TILE  
**WALLS:**  
 W-1 PAINT  
 W-2 PORCELAIN TILE  
**CEILING:**  
 C-1 EXPOSED, PAINTED  
 C-2 1/2" GYPSUM BOARD, PAINTED  
 FINISH COLORS TO BE DETERMINED BY OWNER

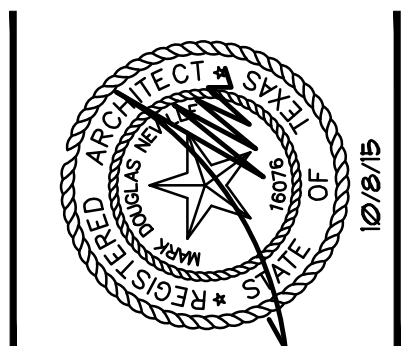


**04 RECEPTOR HEAD TRACK @ FIRE RATED WALL, TYP.**  
SCALE: 3" = 1'-0"

REVISIONS	DATE	#
Revision	9/18/15	1
Coordinator/ City Comments	10/8/15	2

These drawings and accompanying specifications are to be an instrument of service and shall remain the property of the Architect. They are not to be used on other projects or extensions to this project except by agreement in writing and with appropriate compensation to the Architect. Contractor is responsible for confirming and correcting dimensions at the job site. The Architect will not be responsible for construction means, methods, techniques, sequences or procedures, or for safety precautions and programs in connection with the project.

300 W. BITTERS ROAD, SUITE 204  
 SAN ANTONIO, TX 78216  
 VOICE: (210) 384-8900  
 FAX: (210) 364-8240  
 WEB: www.villapark-sa.com  
 © 2015 ALL RIGHTS RESERVED



**LIFE SAFETY/FLOOR/FURNITURE PLANS**  
**BACH HOLDINGS**  
 INTERIOR FINISH-OUT  
 5602 W. HAUSMAN ROAD  
 SAN ANTONIO, TEXAS 78249

DRAWN: JRF  
 CHECKED: MDN  
 DATE: 8/31/15  
 PROJECT: UNIVERSITY HEIGHTS  
 JOB. NO.: 15-081  
 SHEET