



# Northwest Business Campus III

24,755 SF Building

19,851 SF Available 1/1/2027

2955 Xenium Ln N  
Plymouth, MN



## Contact Us

**TOM  
HAYHOE**

+1 952 239 3352

[tom.hayhoe@cbre.com](mailto:tom.hayhoe@cbre.com)

**TOM  
BENNETT**

+1 612 386 6108

[tom.bennett@cbre.com](mailto:tom.bennett@cbre.com)

**PARKER  
RICKERT**

+1 612 845 8022

[parker.rickert@cbre.com](mailto:parker.rickert@cbre.com)



## Property Features

Excellent owner/user opportunity to occupy class A flex space in the heart of Plymouth!

Easy access to 494 & Hwy 55

Class A flex space with income in-place from existing 5k SF tenant

Ample parking to accommodate a variety of different uses

### Total Building SF

+ 24,755 SF

### Lease Rates

+ Negotiable

### Sale Price

+ Negotiable

### 2026 Est. Re Tax/CAM

+ \$10.28

### Clear Height

+ 12'

### Land

+ 2.83 Acres

### Year Built

+ 1986

### Parking

+ 112 (4.52/1,000)

### Loading

+ 2 Drive-Ins (more can be added)

# 19,851

Available SF



19,851

Available SF



**Total Building SF**

+ 24,755 SF

**Lease Rates**

+ Negotiable

**Sale Price**

+ Negotiable

**2026 Est. Re Tax/**

**CAM**

+ \$10.28

**Clear Height**

+ 12'

**Loading**

+ 2 Drive-Ins (more  
can be added)

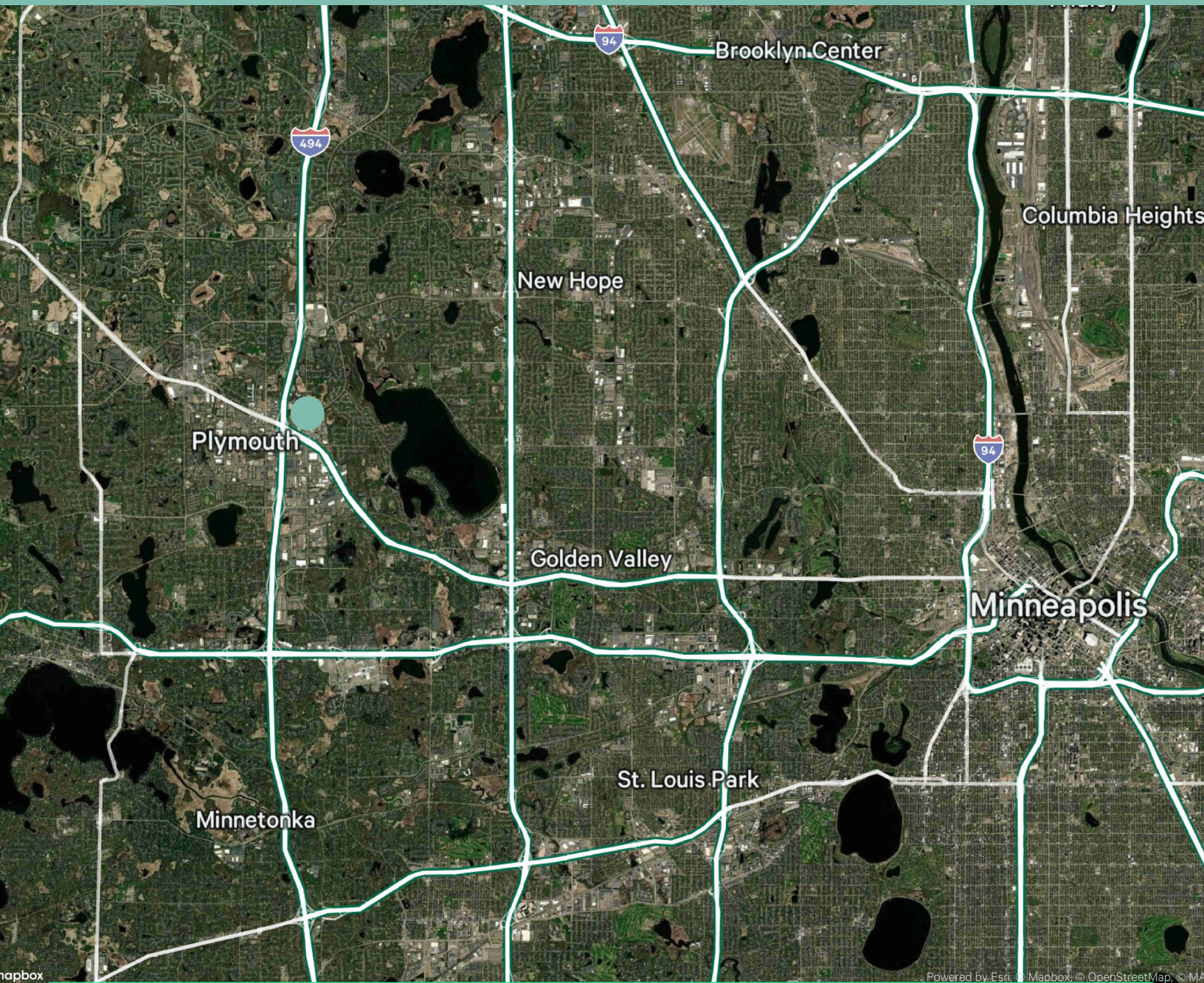
2955 Xenium Ln N  
Plymouth, MN

For Sale or Lease



2955 Xenium Ln N  
Plymouth, MN

For Sale or Lease



## Contact Us

**TOM HAYHOE**  
+1 952 239 3352  
[tom.hayhoe@cbre.com](mailto:tom.hayhoe@cbre.com)

**TOM BENNETT**  
+1 612 386 6108  
[tom.bennett@cbre.com](mailto:tom.bennett@cbre.com)

**PARKER RICKERT**  
+1 612 845 8022  
[parker.rickert@cbre.com](mailto:parker.rickert@cbre.com)

