



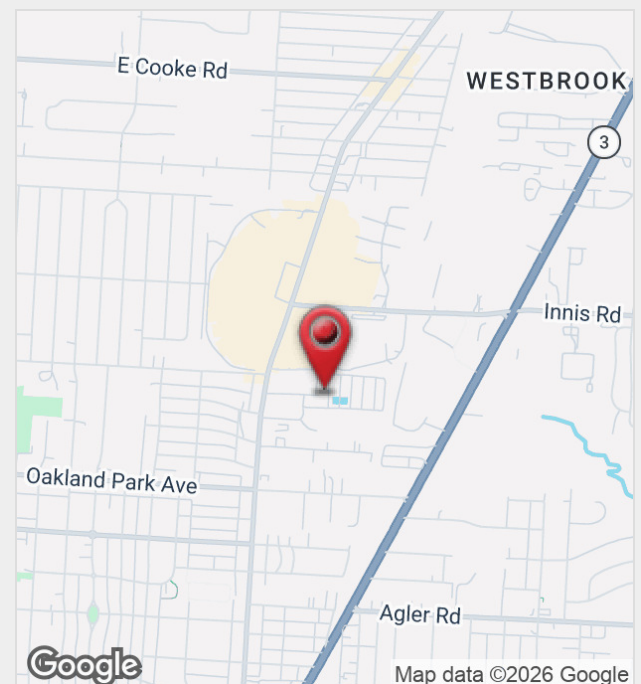
## 1936 & 2066-2182 Britains Lane

Columbus, Ohio 43224

### Property Features

- Move-In Ready Flex Units Available
- 1,200 SF Each with Office & Restroom
- 10' X 10' Overhead Door
- 12' Clear Height
- Ideal Space for Contractors
- Located Between Cleveland Ave & Westerville Rd
- Proximity to Major Highways & Industrial Parks
- Tenant is Responsible for Utilities

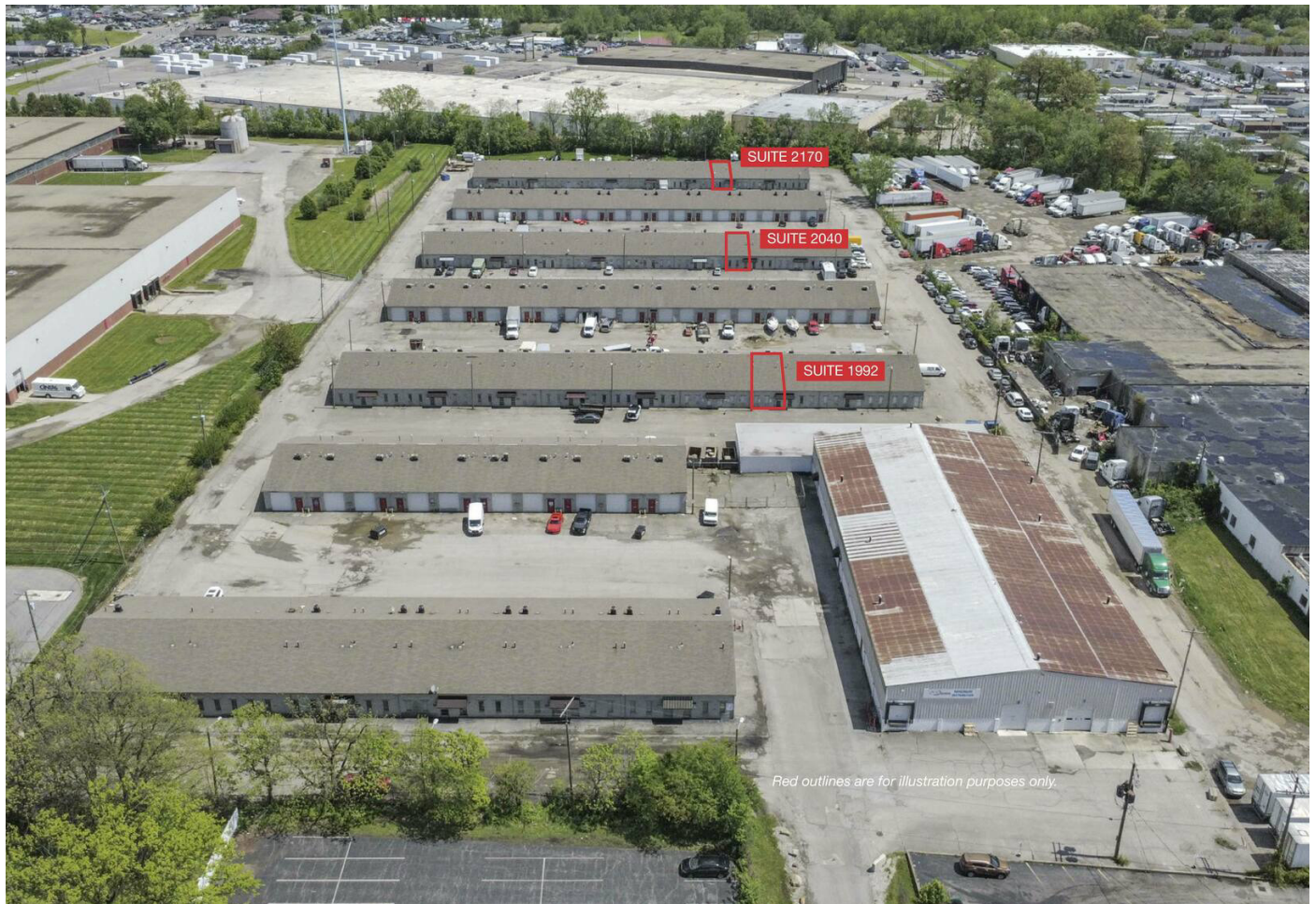
**Lease Rate: \$10.00 SF/Yr (MG)**



For more information:

**Owen Zimmerman**

614 629 5298 • [ozimmerman@ohioequities.com](mailto:ozimmerman@ohioequities.com)



SPACE	SPACE USE	LEASE RATE	LEASE TYPE	SIZE (SF)	AVAILABILITY
Suite 1992	Flex Space	\$10.00 SF/YR	Modified Gross	1,200 SF	VACANT
Suite 2040	Flex Space	\$10.00 SF/YR	Modified Gross	1,200 SF	VACANT
Suite 2170	Flex Space	\$10.00 SF/YR	Modified Gross	1,200 SF	VACANT

