



PERIMETER  
TOWN CENTER

6105 & 6115 PEACHTREE DUNWOODY RD • 1150 HAMMOND DR  
ATLANTA, GA 30328

Ackerman & Co.

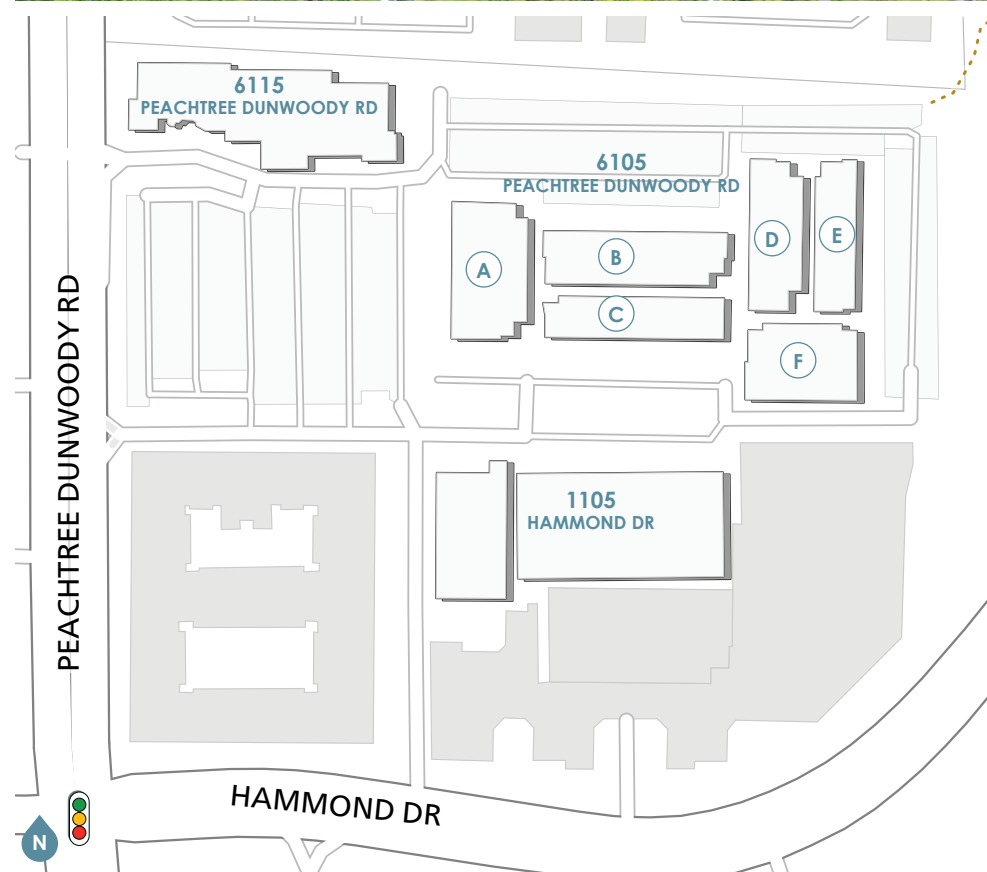
# ATLANTA'S PREMIER LOCATION FOR HEALTHCARE OFFICE

**Perimeter Town Center**, a multi-building medical office and retail-oriented complex, offers healthcare practices an unmatched combination of access, visibility and amenities.

Located at the signalized intersection of Hammond Drive and Peachtree Dunwoody Road, **Perimeter Town Center** is less than a mile away from Pill Hill, the dynamic healthcare hub with three of metro Atlanta's top hospitals, Northside Hospital of Atlanta, Emory at Saint Joseph's and Children Healthcare of Atlanta at Scottish Rite, as well as many of the region's most innovative healthcare practices and outpatient centers. **Perimeter Town Center** is less than a 5-minute drive from some of the country's top employers, including UPS, State Farm and Cox Enterprises.

The Sandy Springs/ Perimeter Center submarket also boasts some of area's most affluent residential neighborhoods in Atlanta, as well as thousands of luxury apartment and townhome communities with a 10-minute walk.

- Multiple access points along Peachtree Dunwoody Road and Hammond Drive
- Ample free surface and covered parking
- On-site management office
- Signage on Peachtree Dunwoody Road
- 24-hour on-site manned security



For Office Leasing, please contact  
**KEVIN EHRINGER**  
770.913.3960  
kehringer@ackermanco.net

Ackerman & Co.

Whether walking or riding, **Perimeter Town Center** is easily accessible to everything, from world renowned hospitals to Fortune 1000 headquarters to the hottest coffee shops in the city.

### MAJOR OFFICE EMPLOYERS

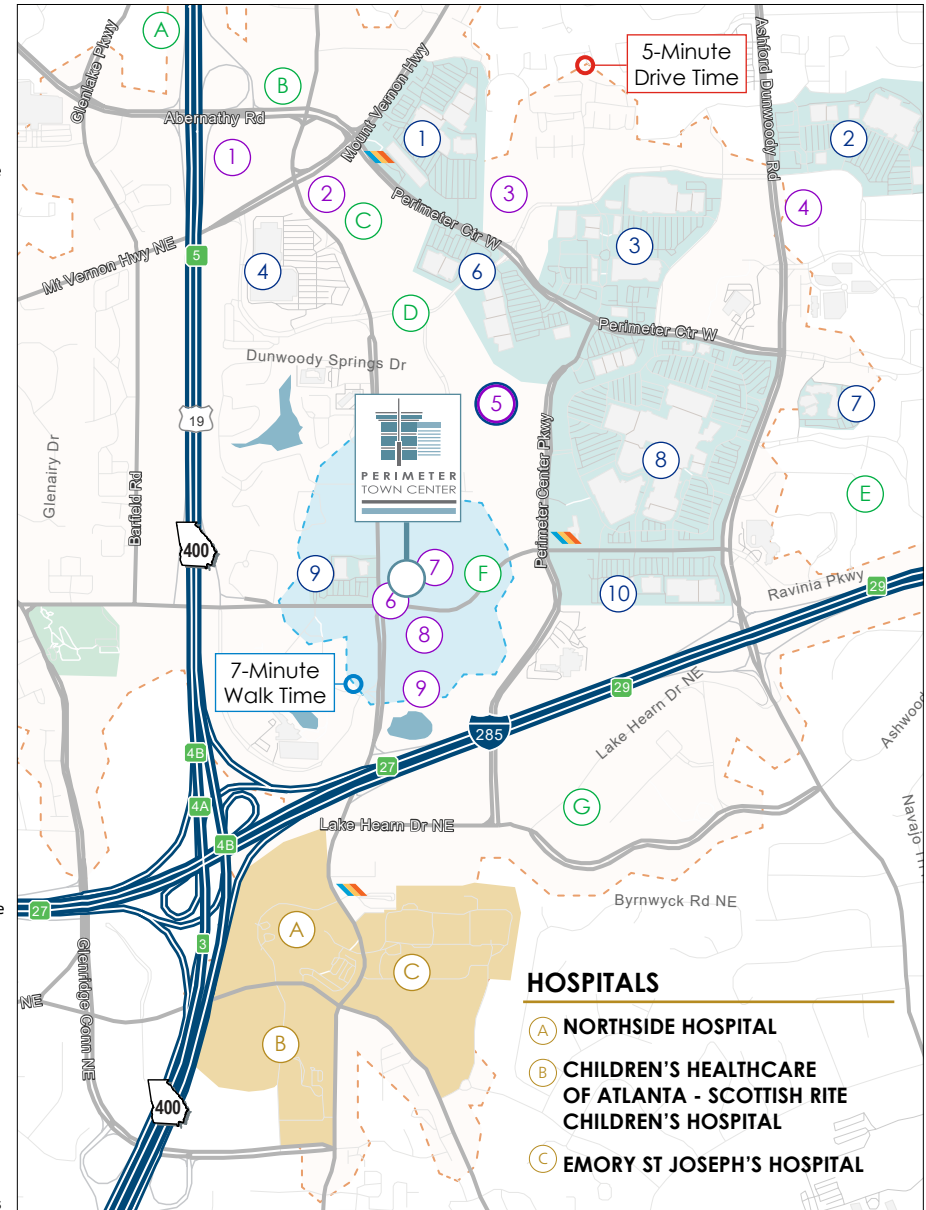
- |   |  |
|---|--|
| <b>A UPS HEADQUARTERS</b><br>≈ 4,000+ Employees | <b>E STATE FARM</b><br>≈ 2,000+ Employees            |
| <b>B WESTROCK</b><br>≈ 1,300+ Employees         | <b>F STATE FARM (PHASE II)</b><br>≈ 4,800+ Employees |
| <b>C VMWARE</b><br>≈ 1,000+ Employees           | <b>G COX AUTOMOTIVE</b><br>≈ 2,000+ Employees        |
| <b>D COX ENTERPRISES</b><br>≈ 8,500+ Employees  |  |

### MULTIFAMILY

- |   |   |
|---|---|
| <b>1 NORTHPARK 100</b><br>🏠 350 Units proposed                                | <b>6 ARABELLE</b><br>🏠 384 Units          |
| <b>2 PEACHTREE DUNWOODY PLACE</b><br>🏠 216 Units                              | <b>7 1160 HAMMOND</b><br>🏠 345 Units      |
| <b>3 FLATS AT PERIMETER PLACE</b><br>🏠 323 Units                              | <b>8 SYNC AT PERIMETER</b><br>🏠 341 Units |
| <b>4 BRICKS AT PERIMETER</b><br>🏠 446 Units                                   | <b>9 THE BISHOP</b><br>🏠 425 Units        |
| <b>5 HIGH STREET</b><br>🏠 598 & 212 Units / Phase I<br>🏠 994 Units / Phase II |   |

### SHOPPING & DINING

- 1 PERIMETER POINT**
  - 🏪 Dick's Sporting Goods, Five Below, LA Fitness, Regal Cinemas, Roam Co-working
  - ☕ Chick-fil-A, Wendy's, Starbucks, Tropical Smoothie Cafe
- 2 PERIMETER VILLAGE**
  - 🏪 DSW, Hobby Lobby, Cost Plus World Market, Kroger (coming soon)
  - ☕ Olive Garden, J Alexander, Another Broken Egg, The Bird, Taki Japanese Steakhouse, Poke Bar
- 3 ASHFORD LANE**
  - 🏪 Target, Michael's, Crunch, Ross, My Salon Suites
  - ☕ Politan Row Food Hall, Flemings, Chipotle, Hob Nob, Cold Stone Creamery, Grana, Superica
- 4 COSTCO CENTER**
  - 🏪 Costco, The Home Depot
- 5 HIGH STREET**
  - ☕ Puttshack, Hampton Social, Velvet Taco, Nando's, Sugarcoat, Cuddleshif
- 6 PERIMETER SQUARE**
  - 🏪 REI, Goodwill, Haverty's, Petsmart, Total Wine
  - ☕ Cava, La Madeleine, Honey Baked Ham
- 7 PARK PLACE**
  - 🏪 Jared, Prime Health MD, Fidelity Investors
  - ☕ Sage Woodfire Tavern, McKendrick's Steakhouse, The Brass Tap
- 8 PERIMETER MALL**
  - 🏪 Dillard's, Macy's, Nordstrom, Von Maur, Apple, H&M, Zara, Sephora
  - ☕ Food Court, Cheesecake Factory, Maggiano's Little Italy, Capital Grille, Seasons 52
- 9 PUBLIX AT PERIMETER**
  - 🏪 Publix, Walgreens, Suntrust, Delta Community Credit Union
  - ☕ Arby's, Chin Chin, Willy's Mexican Grill, Subway
- 10 PERIMETER EXPO**
  - 🏪 Best Buy, Marshalls, Nordstrom Rack, Old Navy, Rooms To Go, Onelife Fitness
  - ☕ Newk's Eatery



### HOSPITALS

- A NORTHSIDE HOSPITAL**
- B CHILDREN'S HEALTHCARE OF ATLANTA - SCOTTISH RITE CHILDREN'S HOSPITAL**
- C EMORY ST JOSEPH'S HOSPITAL**



For Office Leasing, please contact  
**KEVIN EHRINGER**  
 770.913.3960  
 kehninger@ackermanco.net

Ackerman & Co.

# Perimeter Town Center

Medical Office Spaces - 1,170 - 11,645 SF

## 1150 Hammond Drive

BUILDING	SUITE	RSF
1150	520	4,480

## 6105 Peachtree Dunwoody Road

BUILDING	SUITE	RSF
6105-A	200	4,302
	205	3,069
	210	2,542
6105-B	215*	2,595
	225*	2,450
	240	2,268
6105-D	135	9,950
	265*	3,023
	270*	3,772
	275*	3,155
6105-E	285*	2,083
	290*	3,161
6105-F	295	11,198

\* contiguous

## 6115 Peachtree Dunwoody Road

BUILDING	SUITE	RSF
6115	115	3,071
	130	2,806
	225	5,432



For Office Leasing, please contact  
**KEVIN EHRINGER**  
 770.913.3960  
 kehninger@ackermanco.net

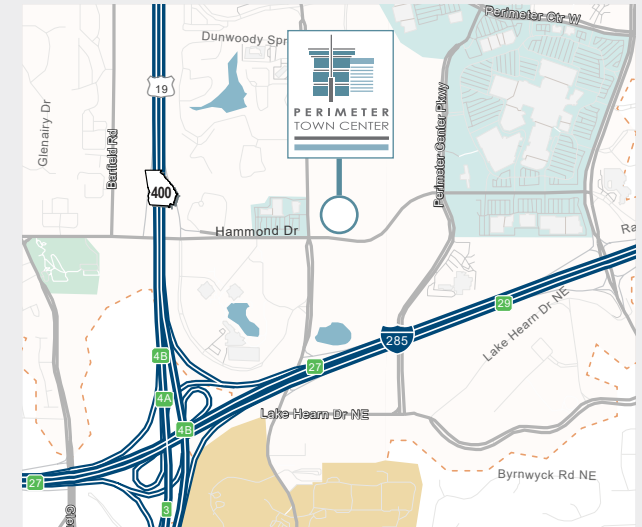
Ackerman & Co.

# Medical/Dental Office Space

1150 Hammond Dr, Atlanta, GA 30328

## HIGHLIGHTS

- Available:
  - **520 | 4,480 SF available June 2026**
- No hospital use restrictions
- 1/10th of a mile from Dunwoody rail station



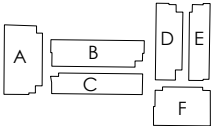
For Office Leasing, please contact  
**KEVIN EHRINGER**  
770.913.3960  
kehringer@ackermanco.net

Ackerman & Co.

# Suite 520 | Floor 5

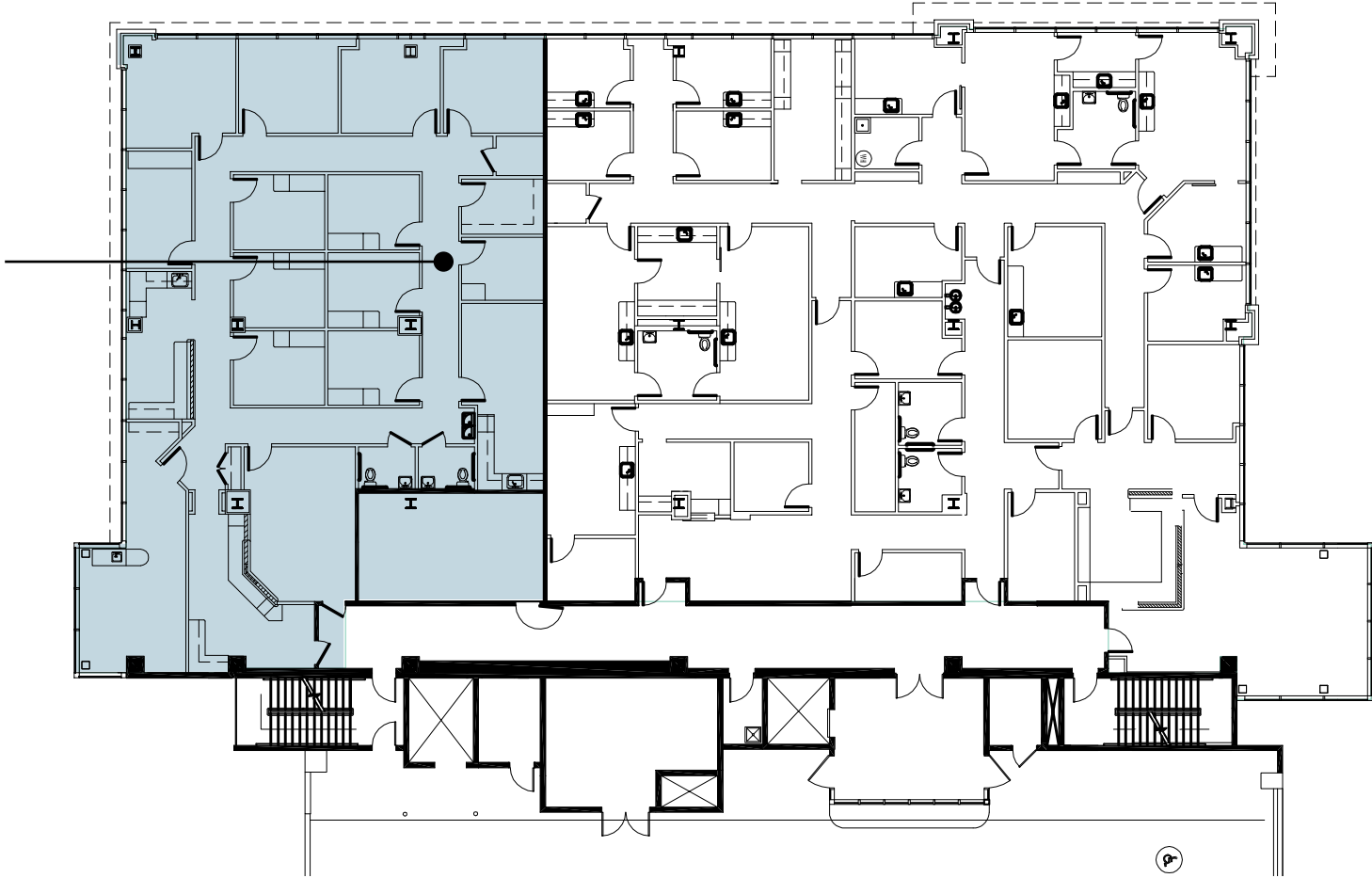
1150 Hammond Dr, Atlanta, GA 30328

6115



1150

**Suite 520**  
4,480 RSF  
available June 2026



For Office Leasing, please contact  
**KEVIN EHRINGER**  
770.913.3960  
kehringer@ackermanco.net

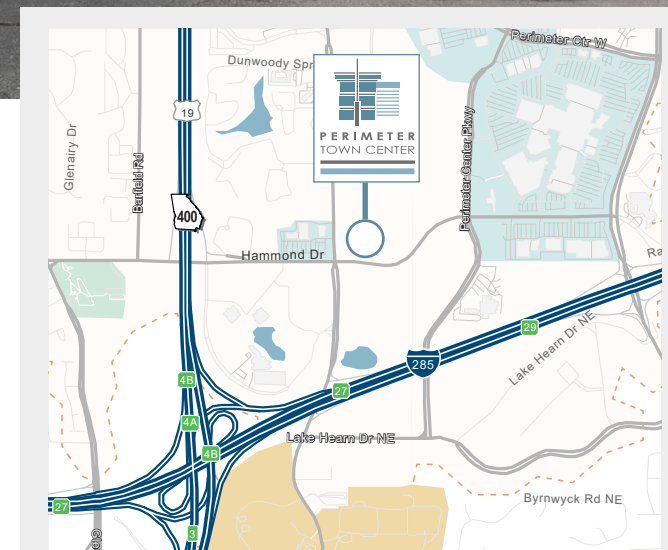
Ackerman & Co.

# Medical/Dental/Research Space

6105-A Peachtree Dunwoody, Atlanta, GA 30328

## HIGHLIGHTS

- Available:
  - SUITE 200 - 4,302 RSF
  - SUITE 205 - 3,069 RSF
  - SUITE 210 - 2,542 RSF
- No hospital use restrictions
- Ample free surface and covered parking (4:1,000)
- On-site gourmet coffee shop and restaurants
- On-site management & building engineers
- 24-hour on-site manned security
- Exceptional ingress/egress

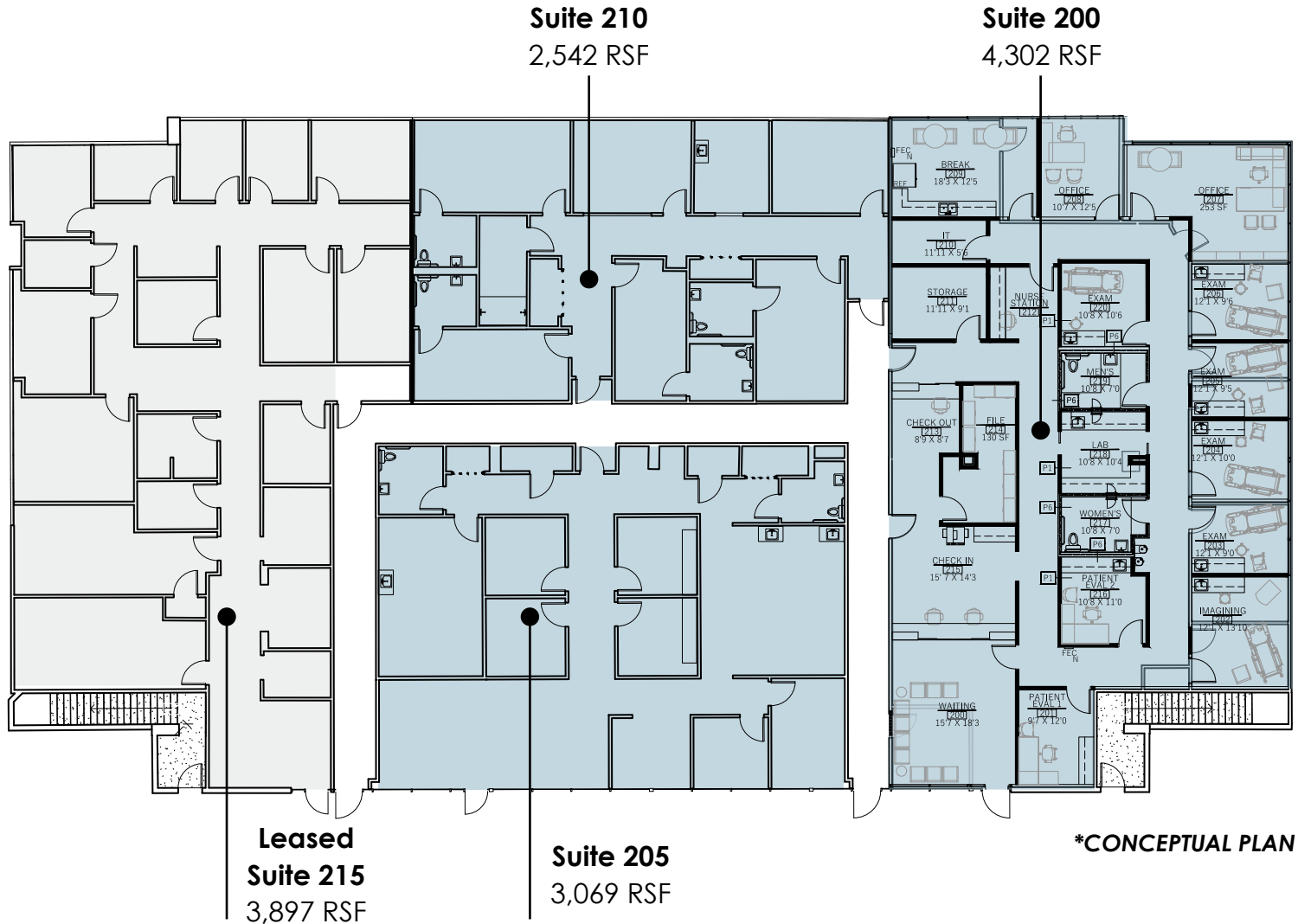
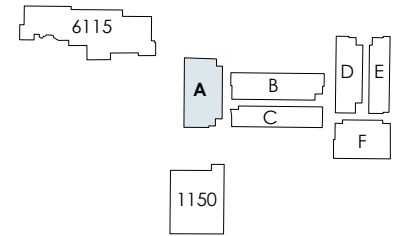


For Office Leasing, please contact  
**KEVIN EHRINGER**  
770.913.3960  
kehringer@ackermanco.net

Ackerman & Co.

# Building 6105 - A | Floor 2

6105 Peachtree Dunwoody Rd, Atlanta, GA 30328



For Office Leasing, please contact  
**KEVIN EHRINGER**  
770.913.3960  
kehringer@ackermanco.net

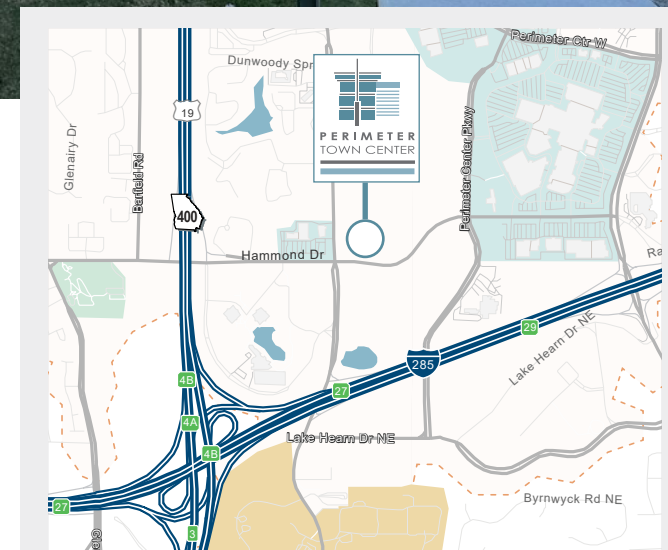
Ackerman & Co.

# Medical Office Space

6105-B Peachtree Dunwoody, Atlanta, GA 30328

## HIGHLIGHTS

- Available:
  - SUITE 215, 225 - 5,012 RSF Contiguous (First Generation Space)
  - SUITE 240 - 2,268 (First Generation)
- Suite 215 - entrance directly off elevator lobby
- Suite 240 - new spec space (coming soon)
- No hospital use restrictions
- 1/10th of a mile from Dunwoody rail station

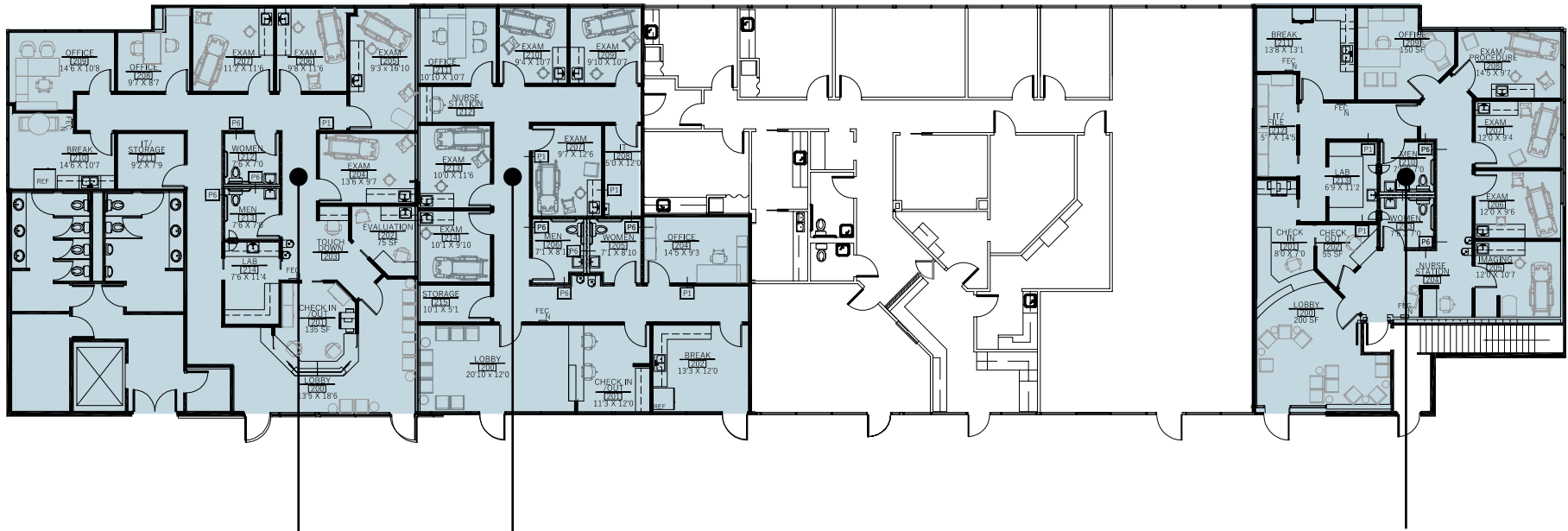
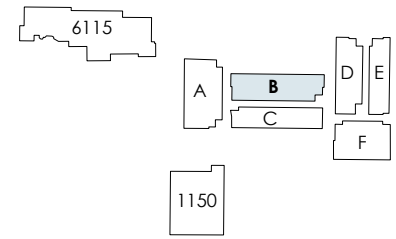


For Office Leasing, please contact  
**KEVIN EHRINGER**  
770.913.3960  
kehringer@ackermanco.net

Ackerman & Co.

# Building 6105 - B | Floor 2

6105 Peachtree Dunwoody Rd, Atlanta, GA 30328



**Suite 215**  
2,565 RSF

**Suite 225**  
2,450 RSF

**Suite 240**  
2,268 RSF

**Contiguous Space Available | 5,012 RSF**

**\*CONCEPTUAL PLANS**



For Office Leasing, please contact  
**KEVIN EHRINGER**  
770.913.3960  
kehringer@ackermanco.net

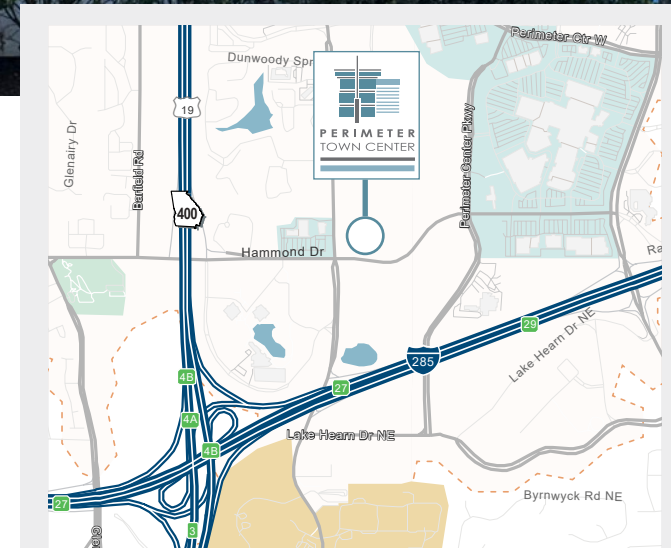
Ackerman & Co.

# Medical Office

6105-D Peachtree Dunwoody Rd, Atlanta, GA 30328

## HIGHLIGHTS

- Available:
  - **SUITE 135 - 9,950 RSF**
  - **SUITE 265, 270 & 275 - 3,023 - 9,950 RSF (can be combined)**
- No hospital use restrictions
- Ample free surface and covered parking (4:1,000)
- On-site gourmet coffee shop and restaurants
- On-site management & building engineers
- 24-hour on-site manned security
- Exceptional ingress/egress
- 1/10th of a mile from Dunwoody rail station

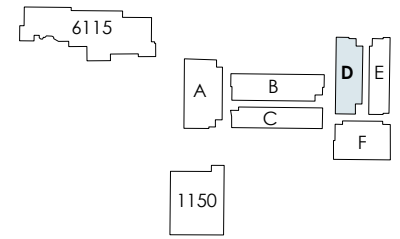


For Office Leasing, please contact  
**KEVIN EHRINGER**  
770.913.3960  
kehringer@ackermanco.net

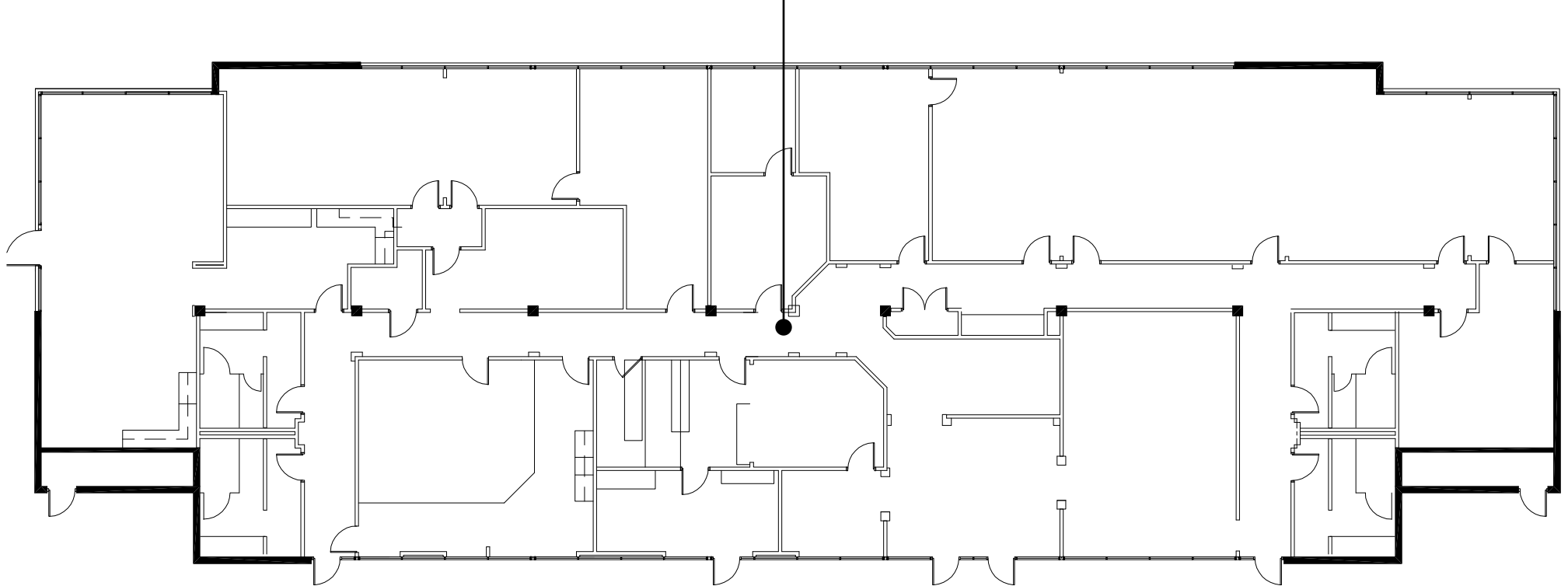
Ackerman & Co.

# Building 6105 - D | Floor 1

6105 Peachtree Dunwoody Rd, Atlanta, GA 30328



**Suite 135**  
9,950 RSF



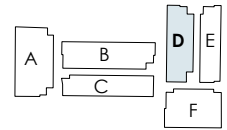
*For Office Leasing, please contact*  
**KEVIN EHRINGER**  
770.913.3960  
kehringer@ackermanco.net

Ackerman & Co.

# Building 6105 - D | Floor 2

6105 Peachtree Dunwoody Rd, Atlanta, GA 30328

6115

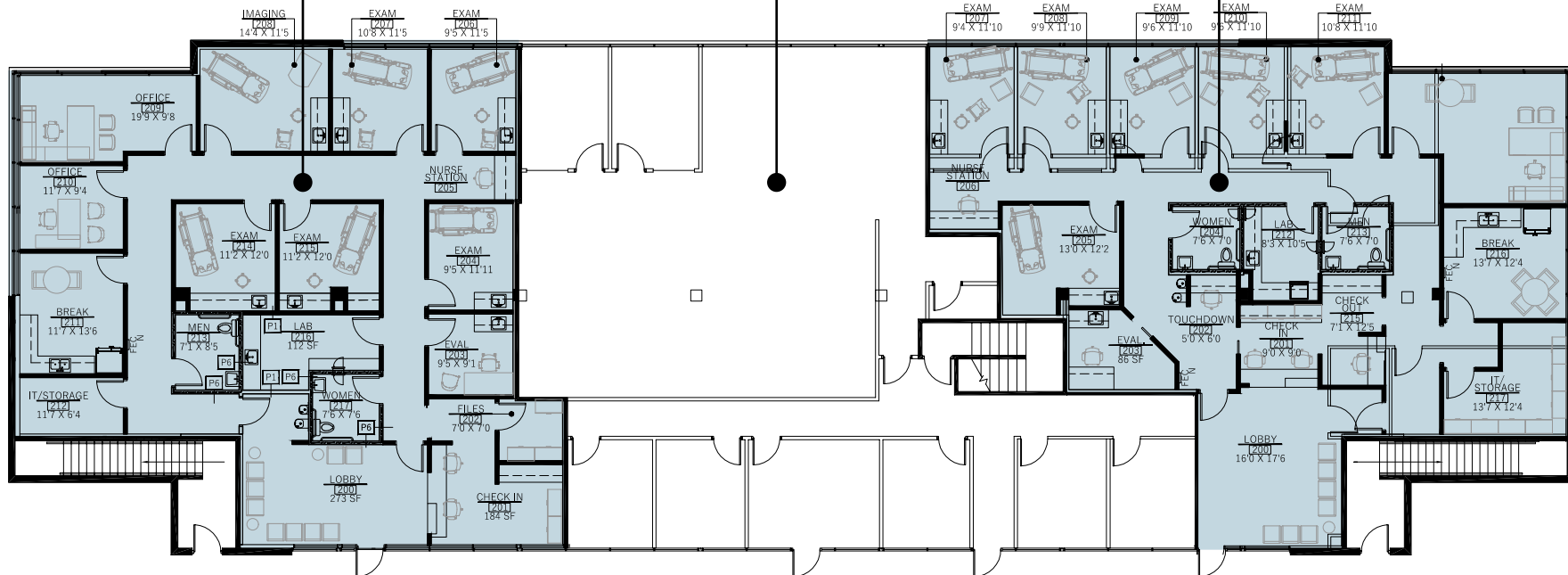


1150

**Suite 275**  
3,155 RSF

**Suite 270**  
3,772 RSF

**Suite 265**  
3,023 RSF



For Office Leasing, please contact  
**KEVIN EHRINGER**  
770.913.3960  
kehringer@ackermanco.net

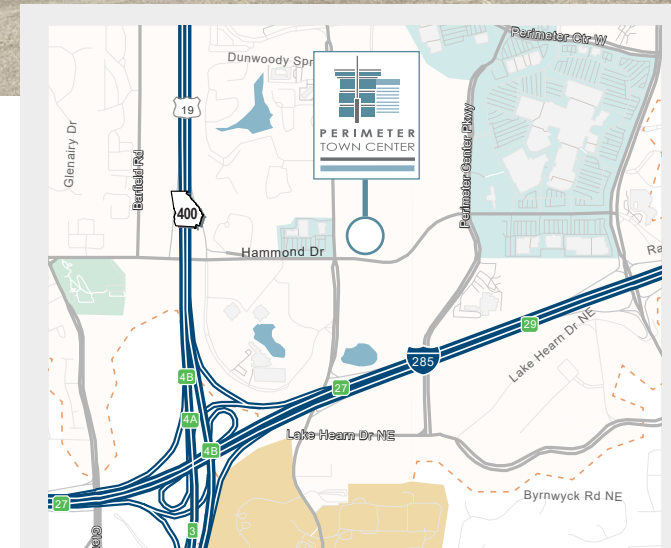
Ackerman & Co.

# Medical Office

6105-E Peachtree Dunwoody Rd, Atlanta, GA 30328

## HIGHLIGHTS

- Available:
  - **SUITE 290 - 3,161 RSF (FIRST GENERATION)**
  - **SUITE 285 - 2,083 RSF (FIRST GENERATION)**
- No hospital use restrictions
- Ample free surface and covered parking (4:1,000)
- Eight on-site restaurants and a gourmet coffee shop
- On-site management & building engineers
- 24-hour on-site manned security
- Exceptional ingress/egress
- 1/10th of a mile from Dunwoody rail station

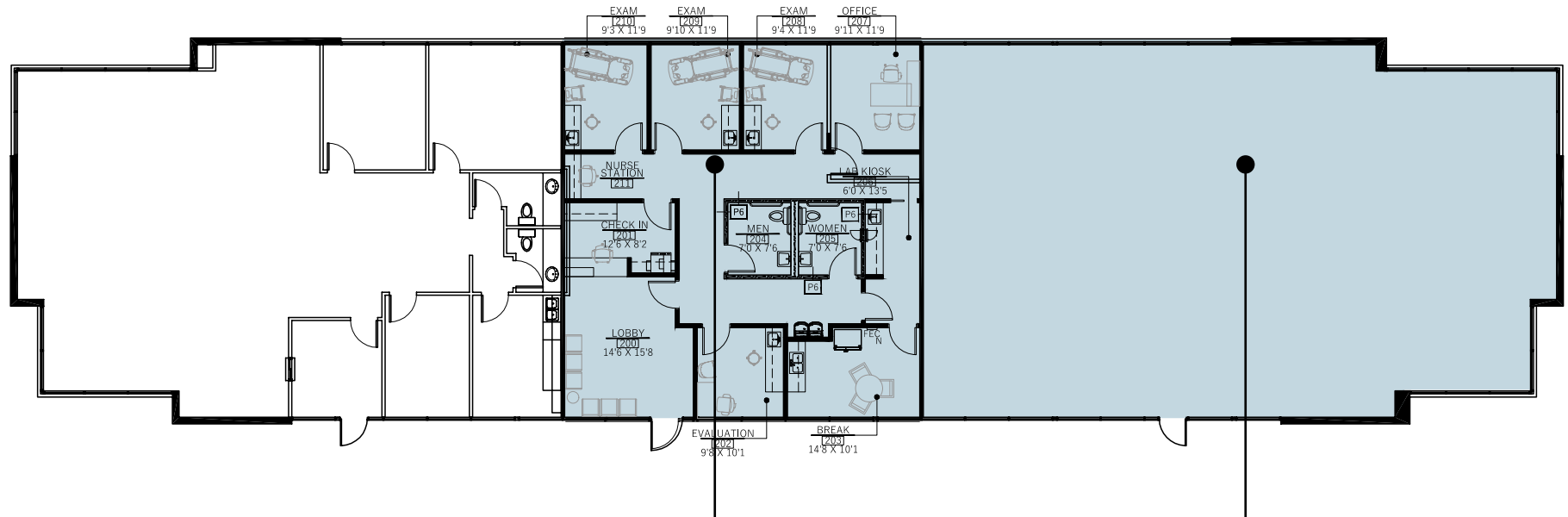
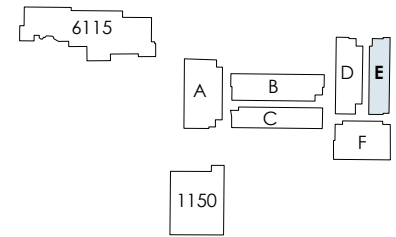


For Office Leasing, please contact  
**KEVIN EHRINGER**  
770.913.3960  
kehringer@ackermanco.net

Ackerman & Co.

# Building 6105 - E | Floor 2

6105 Peachtree Dunwoody Rd, Atlanta, GA 30328



**Suite 285**  
2,083 RSF

**Suite 290**  
3,161 RSF

**Contiguous Space Available | 5,244 RSF**



For Office Leasing, please contact  
**KEVIN EHRINGER**  
770.913.3960  
kehringer@ackermanco.net

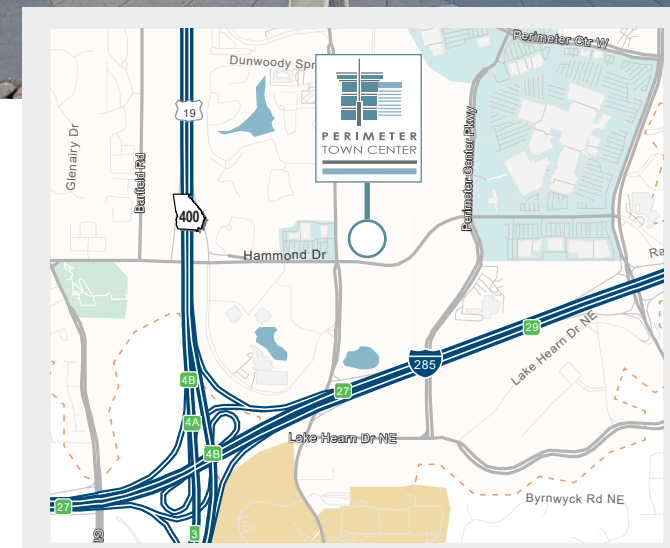
Ackerman & Co.

# Medical Office

6105-F Peachtree Dunwoody Rd, Atlanta, GA 30328

## HIGHLIGHTS

- Available:
  - **SUITE 295 - 11,198 RSF (FIRST GENERATION)**
- No hospital use restrictions
- Ample free surface and covered parking (4:1,000)
- Eight on-site restaurants and a gourmet coffee shop
- On-site management & building engineers
- 24-hour on-site manned security
- Exceptional ingress/egress
- 1/10th of a mile from Dunwoody rail station



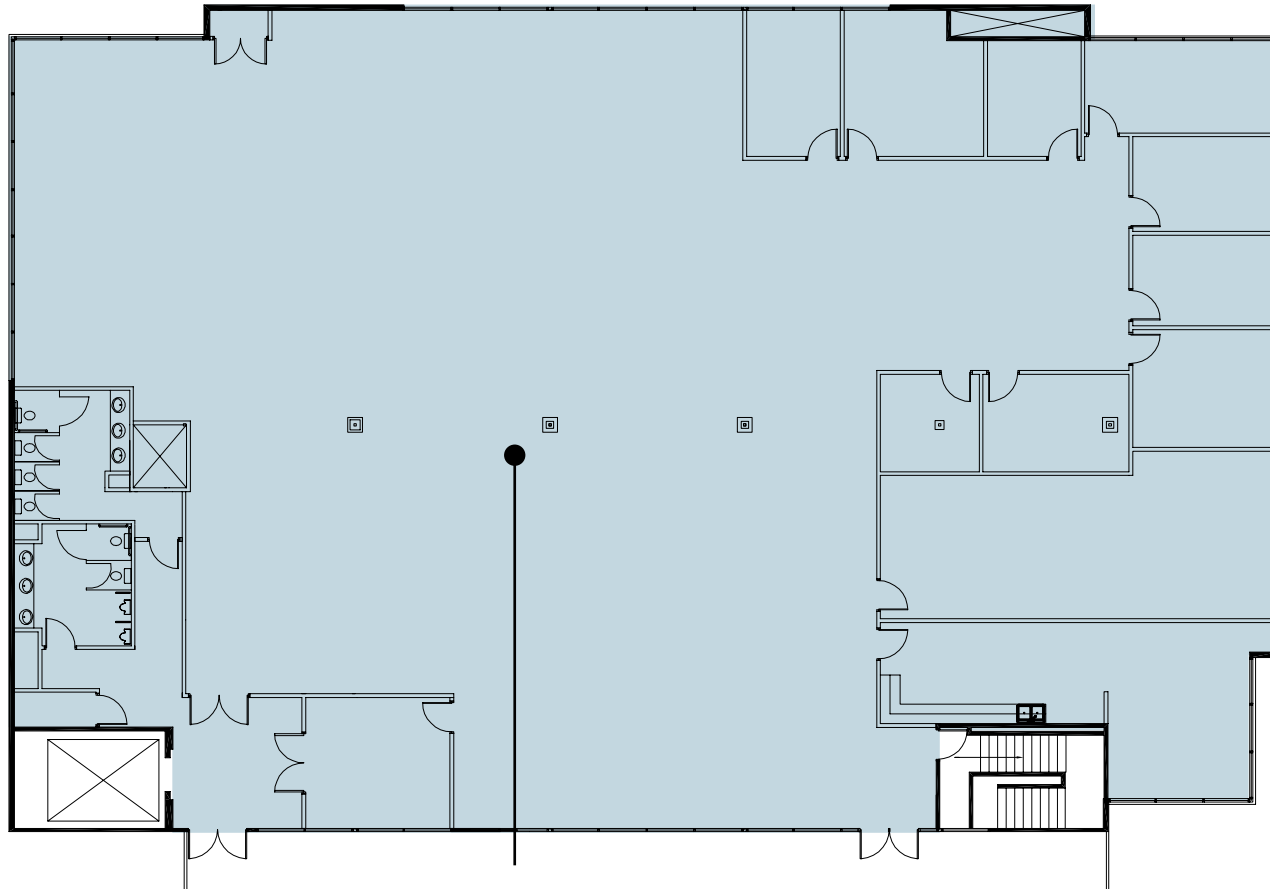
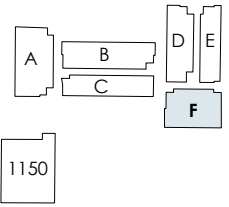
For Office Leasing, please contact  
**KEVIN EHRINGER**  
770.913.3960  
kehringer@ackermanco.net

Ackerman & Co.

# Building 6105 - F | Floor 2

6105 Peachtree Dunwoody Rd, Atlanta, GA 30328

6115



**Suite 295**

11,198 RSF



*For Office Leasing, please contact*  
**KEVIN EHRINGER**  
770.913.3960  
kehringer@ackermanco.net

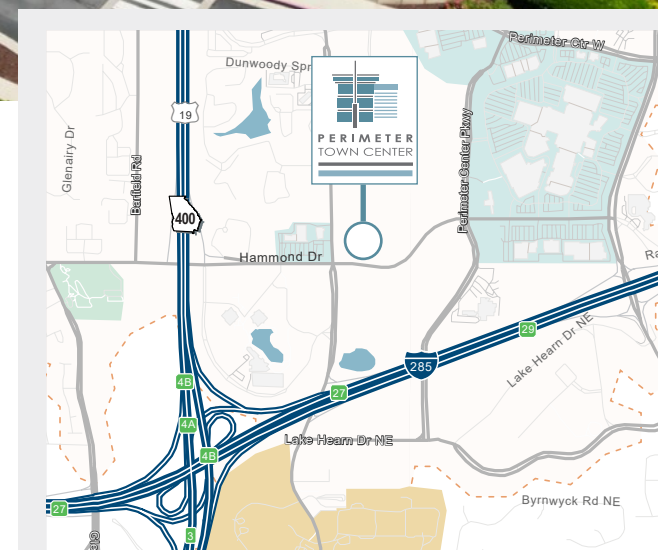
Ackerman & Co.

# Medical, Dental & Restaurant

6115 Peachtree Dunwoody Rd, Atlanta, GA 30328

## HIGHLIGHTS

- Available:
  - **SUITE 130 - 2,806 RSF (end-cap)**
  - **SUITE 115 - 3,071 RSF (second gen-restaurant)**
  - **SUITE 225 - 5,432 RSF**
- Street-level end-cap with patio space and separate covered rear access for surgical patient dropoff
- Second-level dental office
- Ample free parking
- Signage available
- Updated exteriors and wayfinding
- Medical campus setting with a variety of specialties & health providers
- No hospital use restrictions



For Office Leasing, please contact  
**KEVIN EHRINGER**  
770.913.3960  
kehringer@ackermanco.net

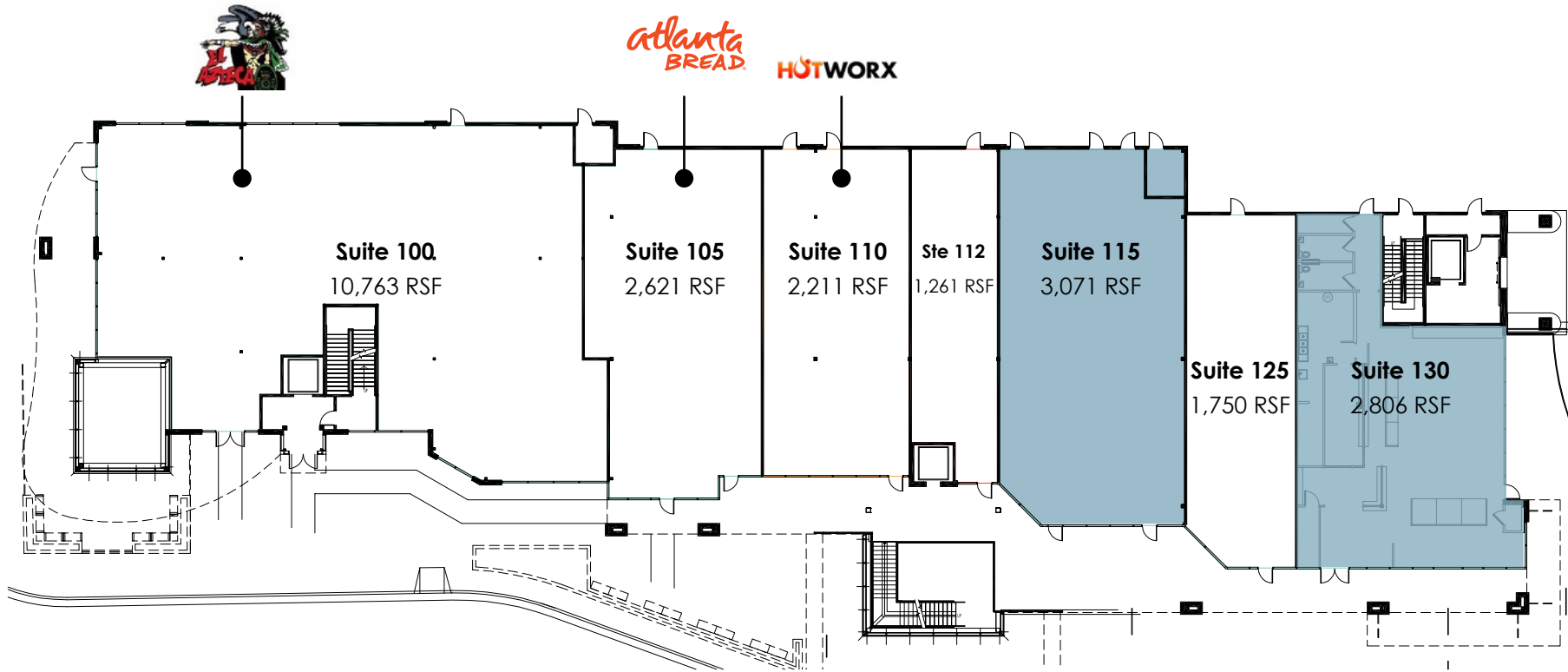
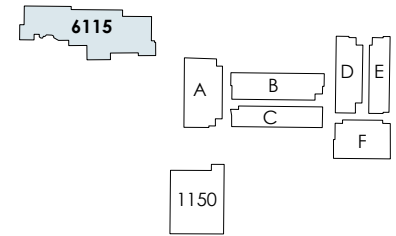
For Retail Leasing, please contact  
**MARISA ROY**  
770.913.3905  
mroy@ackermanco.net

**PATRICK GREEN**  
770.913.3932  
pgreen@ackermanco.net

Ackerman & Co.

# Street Level | Medical Retail

6115 Peachtree Dunwoody Rd, Atlanta, GA 30328



For Office Leasing, please contact  
**KEVIN EHRINGER**  
770.913.3960  
kehringer@ackermanco.net

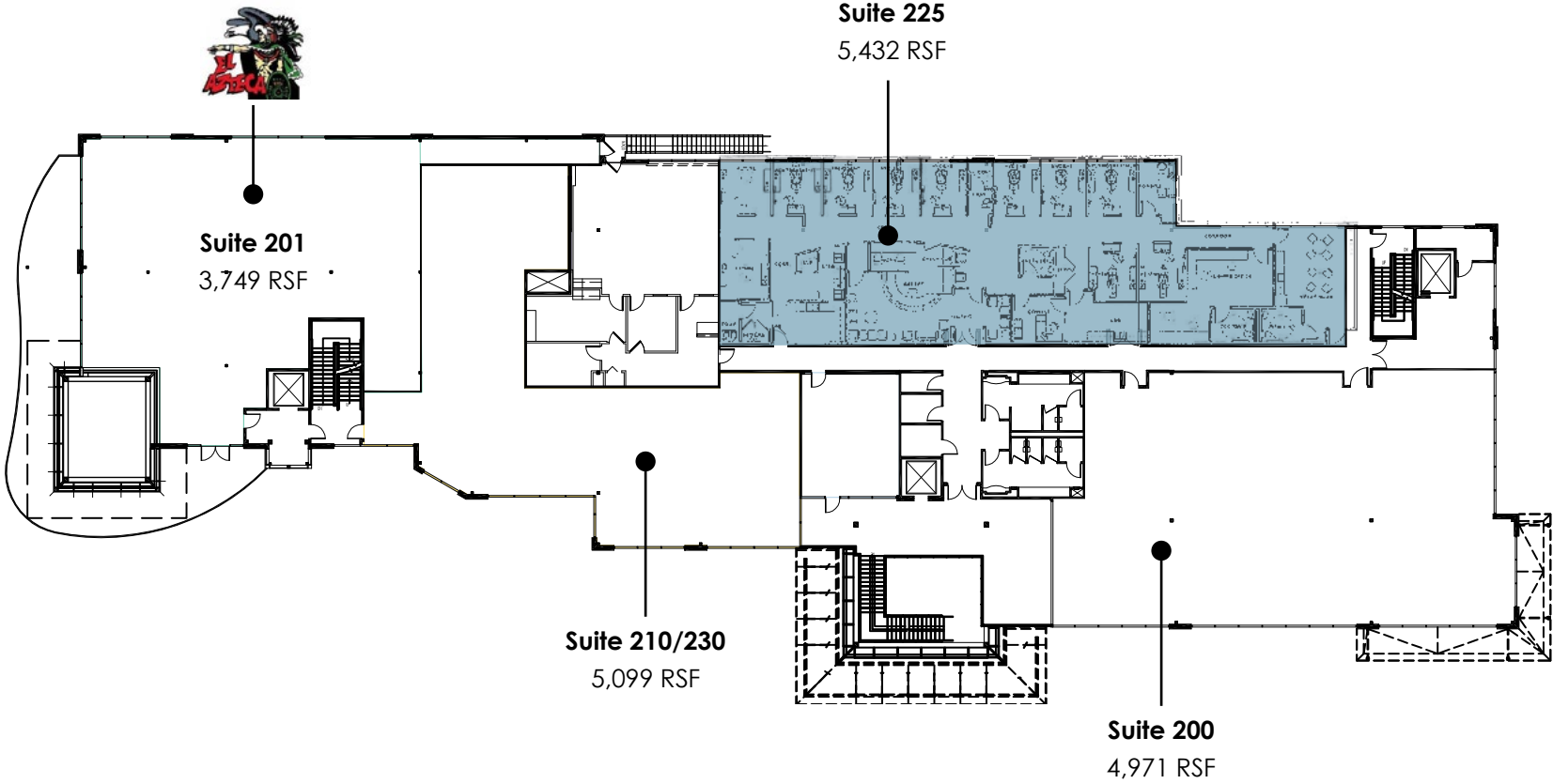
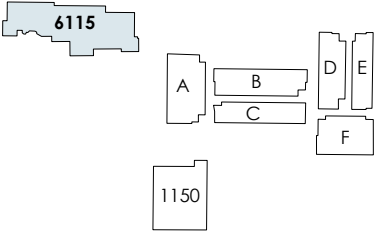
For Retail Leasing, please contact  
**MARISA ROY**  
770.913.3905  
mroy@ackermanco.net

**PATRICK GREEN**  
770.913.3932  
pgreen@ackermanco.net

**Ackerman & Co.**

# 2nd Level | Dental Office

6115 Peachtree Dunwoody Rd, Atlanta, GA 30328



For Office Leasing, please contact  
**KEVIN EHRINGER**  
770.913.3960  
kehringer@ackermanco.net

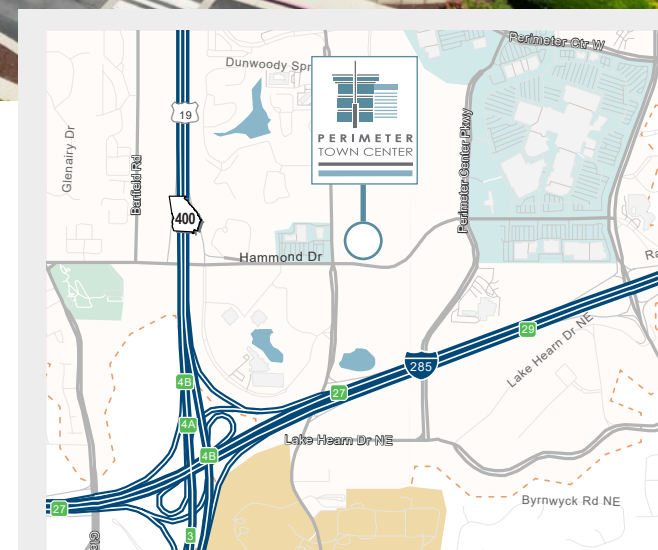
Ackerman & Co.

# Medical/Dental Office

6115 Peachtree Dunwoody Rd, Atlanta, GA 30328

## HIGHLIGHTS

- Available:
  - **SUITE 225 - 5,432 RSF**
- Second-level dental office
- Separate covered rear access for patient dropoff
- Ample free parking
- Signage available
- Updated exteriors and wayfinding
- Medical campus setting with a variety of specialties & health providers
- No hospital use restrictions



For Office Leasing, please contact  
**KEVIN EHRINGER**  
770.913.3960  
kehringer@ackermanco.net

For Retail Leasing, please contact  
**MARISA ROY**  
770.913.3905  
mroy@ackermanco.net

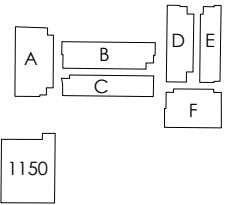
**PATRICK GREEN**  
770.913.3932  
pgreen@ackermanco.net

Ackerman & Co.

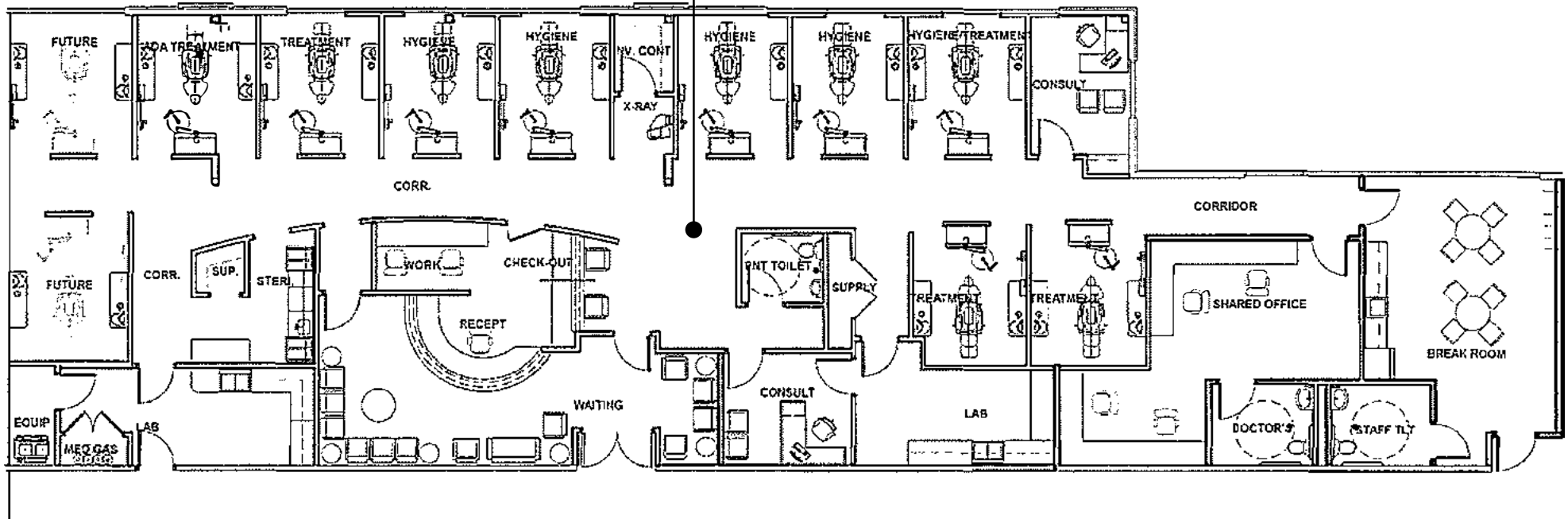
# 2nd Level | Dental Office

6115 Peachtree Dunwoody Rd, Atlanta, GA 30328

6115



Suite 225  
5,432 RSF



For Office Leasing, please contact  
**KEVIN EHRINGER**  
770.913.3960  
kehringer@ackermanco.net

Ackerman & Co.



**KOHN STREET**  
 600,000 SF OFFICE  
 3,000 RESIDENTIAL UNITS  
 400 HOTEL UNITS

## Demographics

	1-MILE	3-MILE	5-MILE
POPULATION	13,296	110,939	253,743
HOUSEHOLDS	7,270	50,834	112,744
AVG HH INCOME	\$151,807	\$179,241	\$193,161



For Office Leasing, please contact  
**KEVIN EHRINGER**  
 770.913.3960  
 kehinger@ackermanco.net

For Retail Leasing, please contact  
**MARISA ROY**  
 770.913.3905  
 mroy@ackermanco.net

**PATRICK GREEN**  
 770.913.3932  
 pgreen@ackermanco.net

Ackerman & Co.