

The Colliers logo consists of the word "Colliers" in a white serif font, set against a dark blue rectangular background with a thin yellow and red horizontal stripe at the bottom.

Accelerating success.

AVAILABLE



FOR SUBLEASE

7301 River Pointe Dr,
North Little Rock, AR

For Sublease: Office Space

Features

- Suite 7301A: +/- 2,400 SF
- Sublease rate: \$2,500/month
- Located off Maumelle Boulevard, surrounded by retail and restaurants
- Quick and easy access to I-430
- Approximately 29,000 vehicles per day on Maumelle Boulevard
- Ample parking

This document/email has been prepared by Colliers for advertising and general information only. Colliers makes no guarantees, representations or warranties of any kind, expressed or implied, regarding the information including, but not limited to, warranties of content, accuracy and reliability. Any interested party should undertake their own inquiries as to the accuracy of the information. Colliers excludes unequivocally all inferred or implied terms, conditions and warranties arising out of this document and excludes all liability for loss and damages arising there from. This publication is the copyrighted property of Colliers and /or its licensor(s). © 2025. All rights reserved. This communication is not intended to cause or induce breach of an existing listing agreement. Colliers International Group Inc.

Asking Price:

\$2,500

Per Month

CONTACT US

Greg Joslin, CCIM, SIOR

+1 501 978 6581

greg.joslin@ar.colliers.com

Colliers | Arkansas

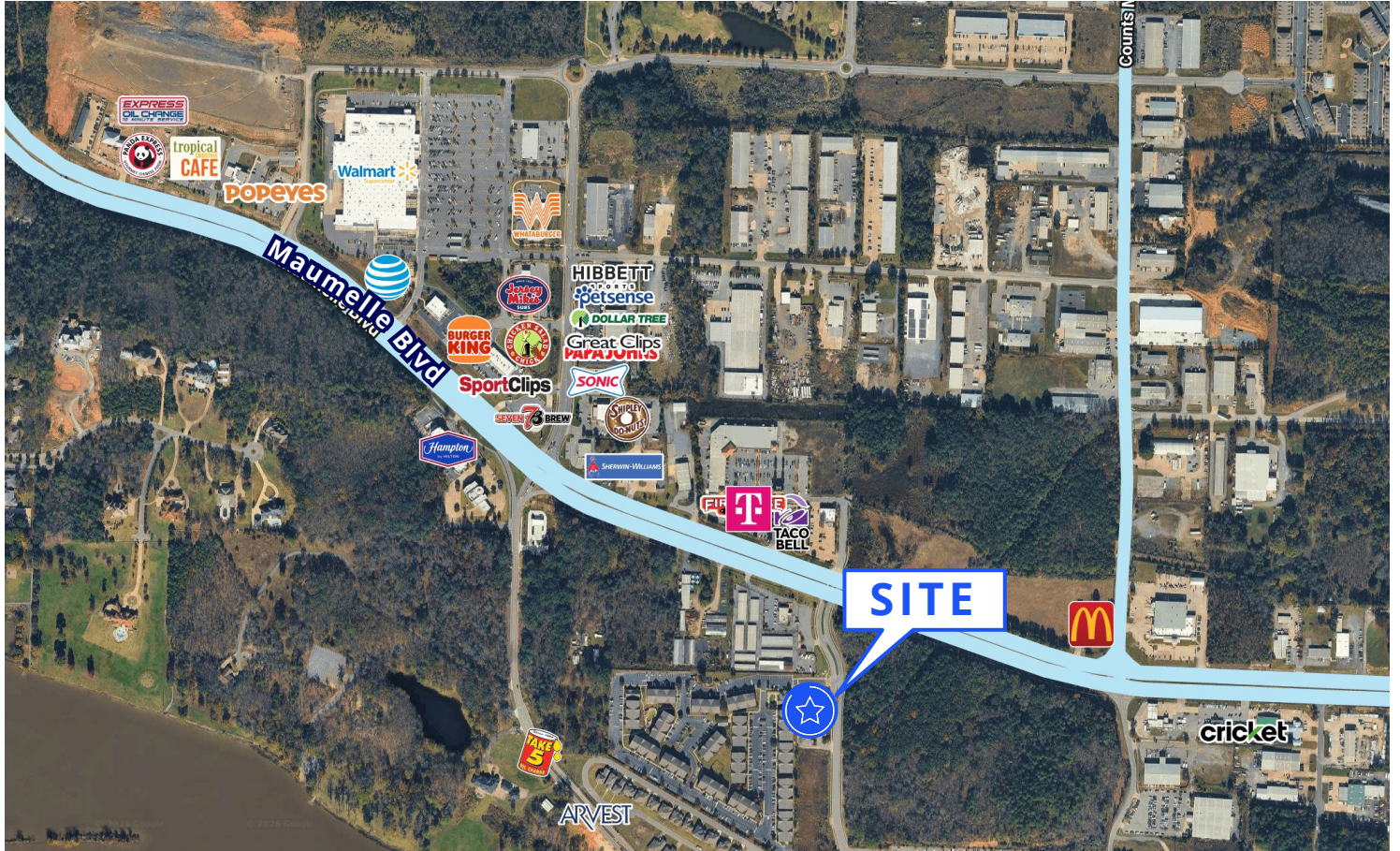
1 Allied Drive, Suite 1500

Little Rock, AR 72202

P: +1 501 372 6161

F: +1 501 372 0671

Property **aerial**



CONTACT US

Greg Joslin, CCIM, SIOR
 +1 501 978 6581
 greg.joslin@ar.colliers.com

Colliers | Arkansas
 1 Allied Drive, Suite 1500
 Little Rock, AR 72202
 P: +1 501 372 6161
 F: +1 501 372 0671

Area Demographics (2025)



ESTIMATED POPULATION

1 Mile	3 Mile	5 Mile
5,432	24,596	87,672



ESTIMATED HOUSEHOLDS

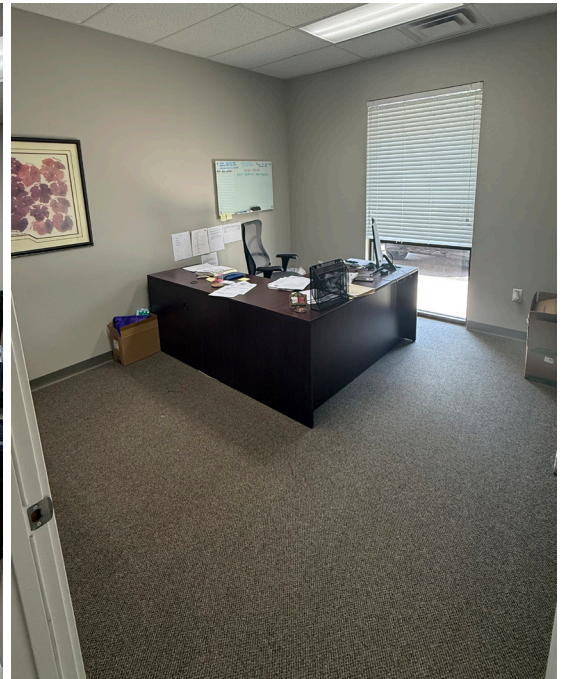
1 Mile	3 Mile	5 Mile
2,969	11,359	39,511



EST. AVG HOUSEHOLD INCOME

1 Mile	3 Mile	5 Mile
\$65,287	\$117,432	\$131,588

Property photos



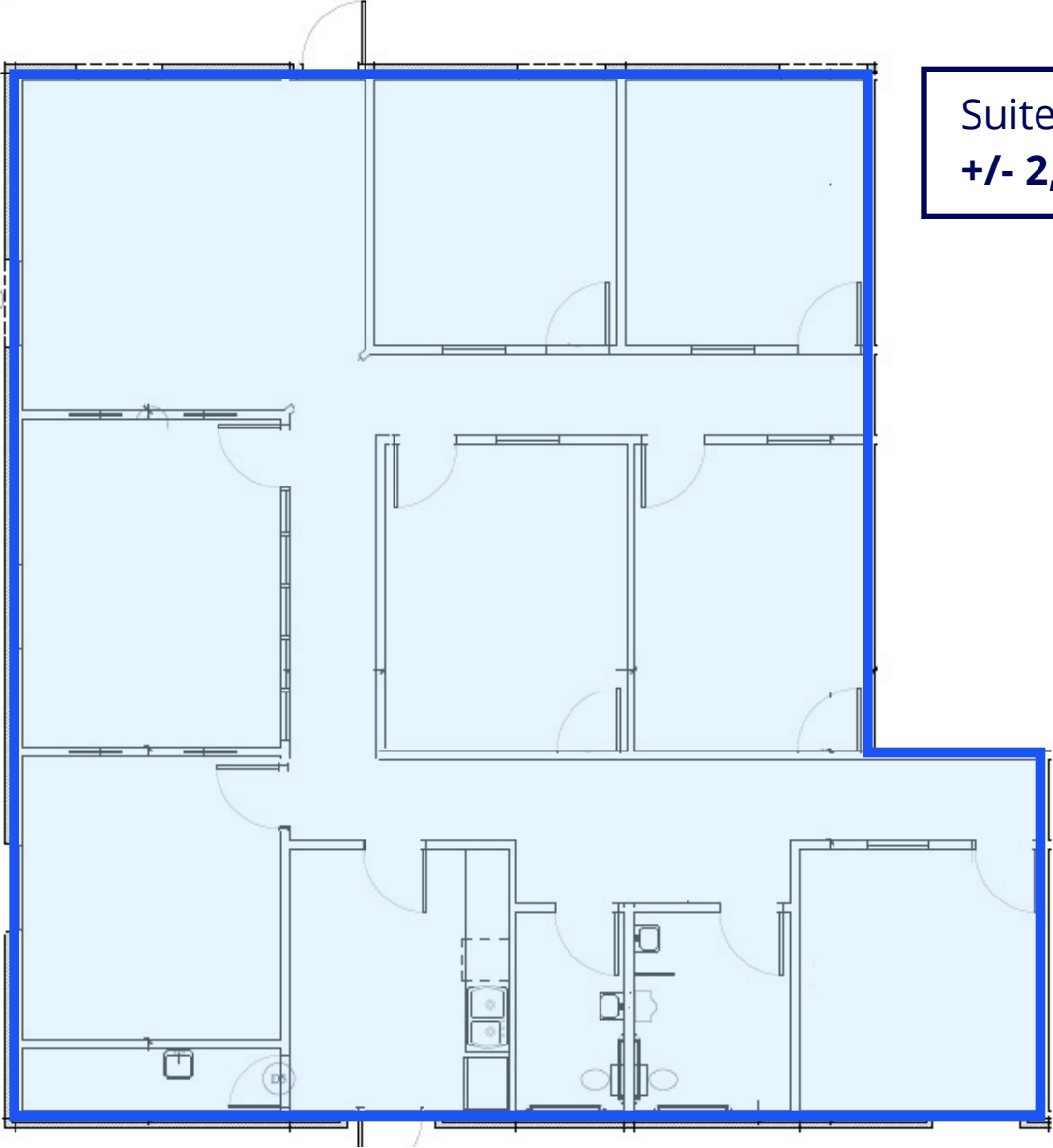
CONTACT US

Greg Joslin, CCIM, SIOR
+1 501 978 6581
greg.joslin@ar.colliers.com

Colliers | Arkansas
1 Allied Drive, Suite 1500
Little Rock, AR 72202
P: +1 501 372 6161
F: +1 501 372 0671



Property floor plan



Suite 7301A
+/- 2,400 SF

