

Office | For Lease

CBRE

# Airport Plaza

1755 East Plumb Lane  
Reno, Nevada 89502



## Airport Plaza

1755 East Plumb Lane | Reno, Nevada 89502



# Property Information

Two-story multi-tenant office building centrally located in the Airport submarket with fast and easy access to major thoroughfares, right off of I-580 and across from the Reno-Tahoe International Airport. Can accommodate a wide variety of tenant sizes.

- + Lease Rate: \$1.50 PSF/Month
- + Full Service Gross
- + A Variety of Office Suites Available
- + Built in 1976
- + Property Beautifully Landscaped
- + Plenty of Parking
- + Immediate Access to Public Transportation

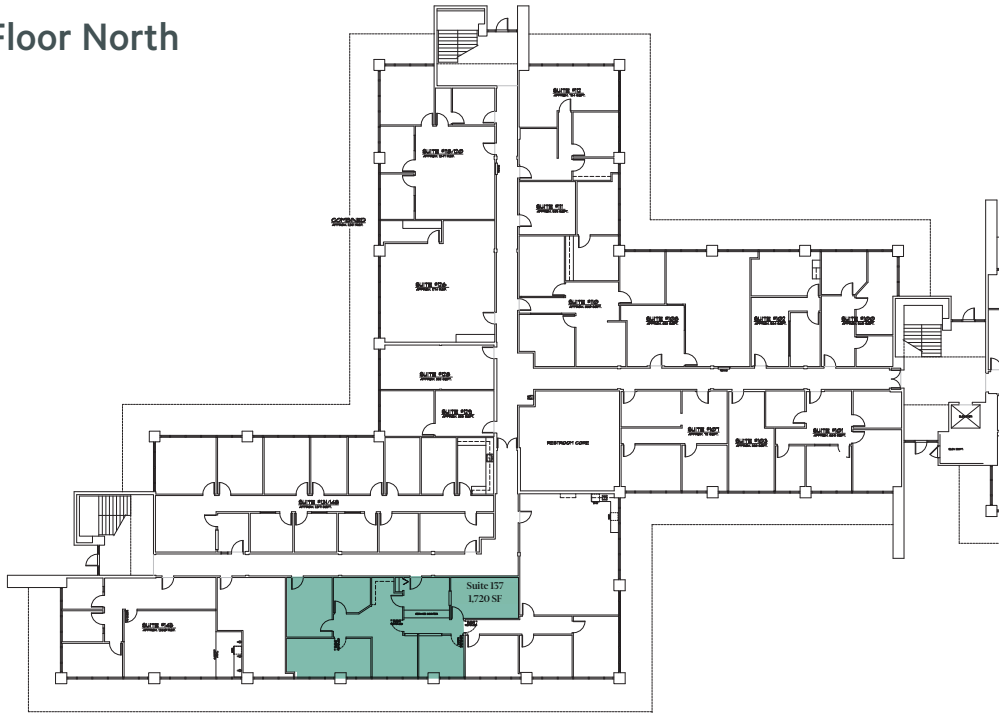
## First Floor

| Suite | SF       | Description |
|-------|----------|-------------|
| 137   | 1,720 SF |             |
| 162   | 1,239 SF |             |

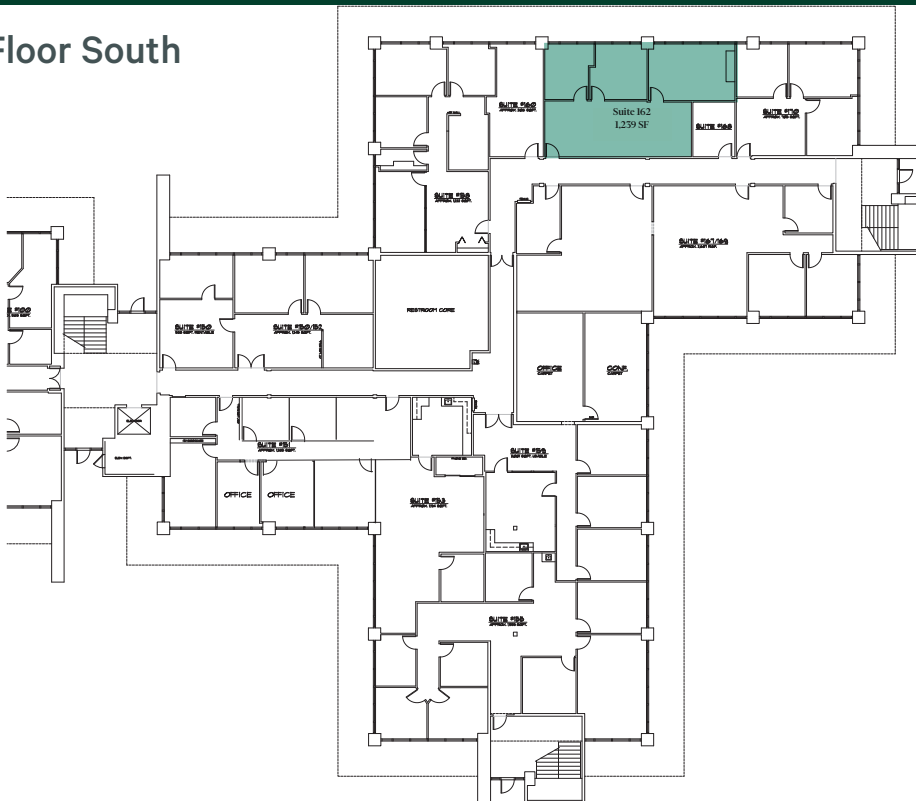
## Second Floor

| Suite | SF       | Description |
|-------|----------|-------------|
| 202   | 3,448 SF |             |
| 222   | 1,179 SF |             |
| 231   | 1,790 SF |             |

### First Floor North



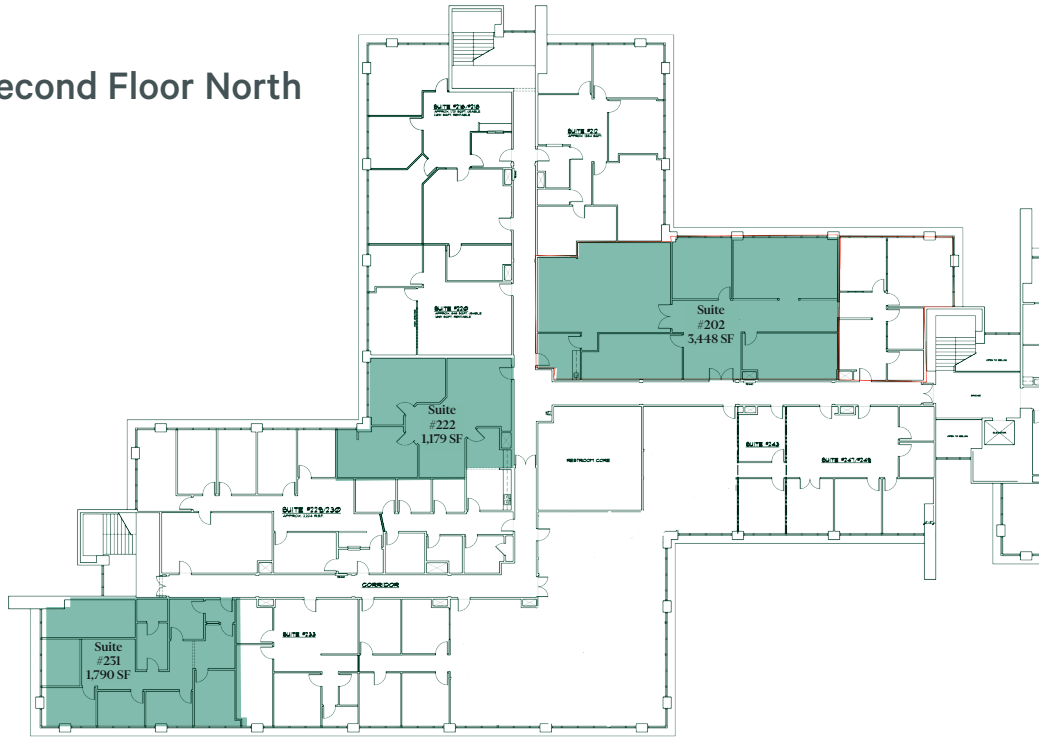
### First Floor South



# Airport Plaza

1755 East Plumb Lane | Reno, Nevada 89502

## Second Floor North



# Airport Plaza

1755 East Plumb Lane | Reno, Nevada 89502

# For Lease



## Contact Us

### Leahna Chapman

Senior Associate

+1 775 823 6937

leahna.chapman@cbre.com

Lic. S.0183267

### Matt Grimes, CCIM

Senior Vice President

+1 775 356 6290

matt.grimes@cbre.com

Lic. S.0072644

### David Woods, CCIM

Senior Vice President

+1 775 321 4459

david.woods@cbre.com

Lic. S.0072655

© 2026 CBRE, Inc. All rights reserved. This information has been obtained from sources believed reliable, but has not been verified for accuracy or completeness. You should conduct a careful, independent investigation of the property and verify all information. Any reliance on this information is solely at your own risk. CBRE and the CBRE logo are service marks of CBRE, Inc. All other marks displayed on this document are the property of their respective owners, and the use of such logos does not imply any affiliation with or endorsement of CBRE. Photos herein are the property of their respective owners. Use of these images without the express written consent of the owner is prohibited.