

FOR LEASE

310 E 1st St. 308-A
Tulsa, OK 74120

DOWNTOWN OFFICE / FLEX SPACE

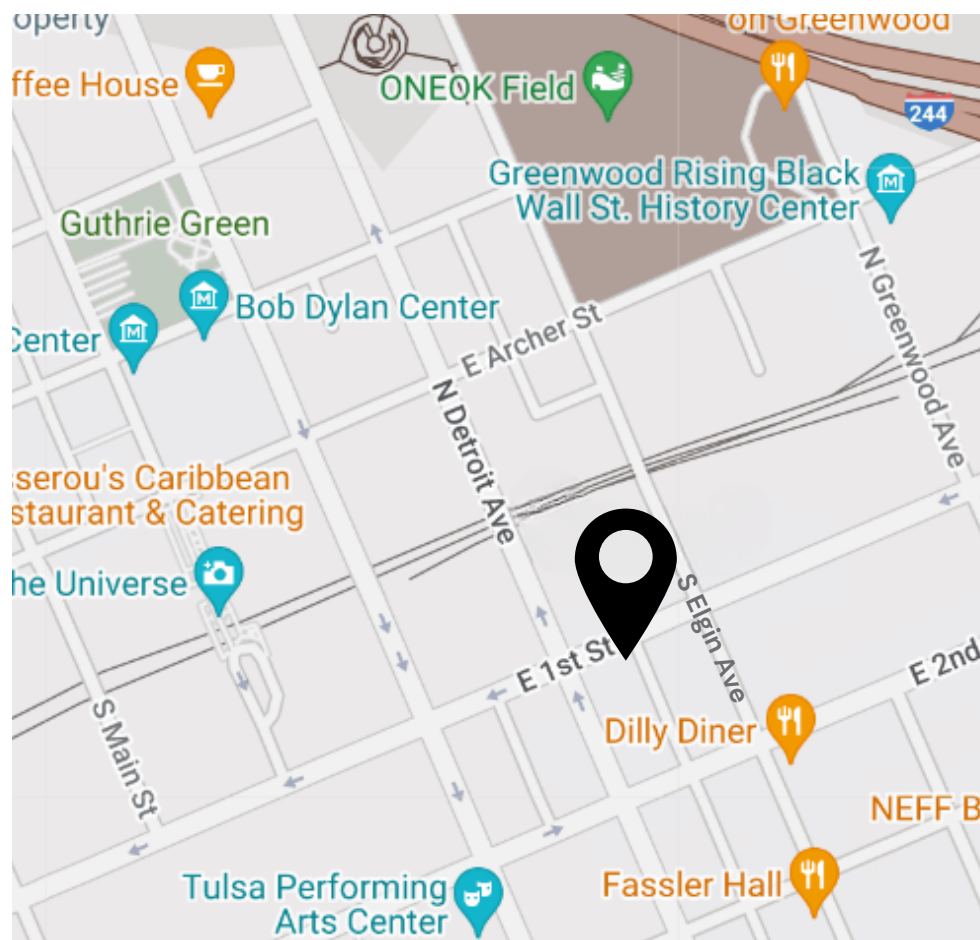


Property Highlights

- Ground Floor
- Storefront
- 3,260 Square Feet
- RENT / SF: \$12 / yr
- NNN

Nestled in the vibrant Blue Dome District, this ground floor retail/office space offers the perfect blend of modern convenience and industrial charm.

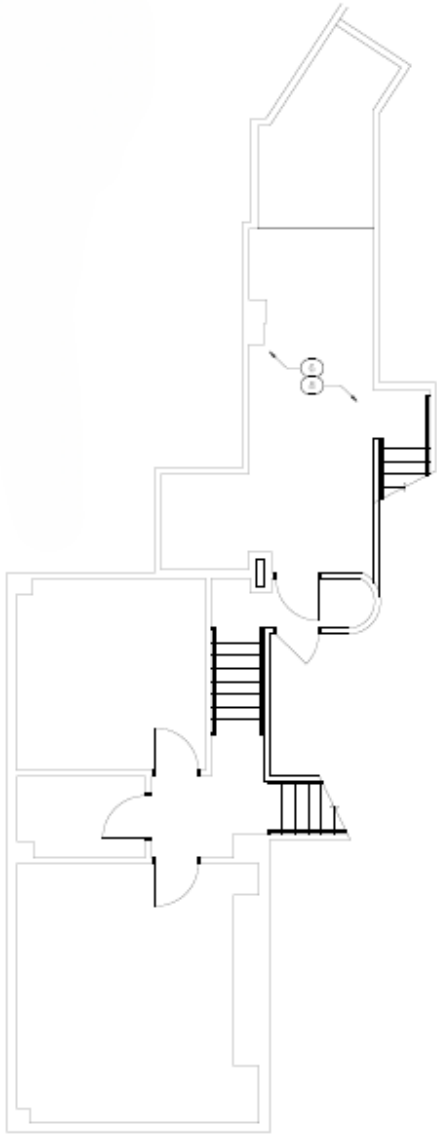
Contact us for more information and to schedule a private tour!



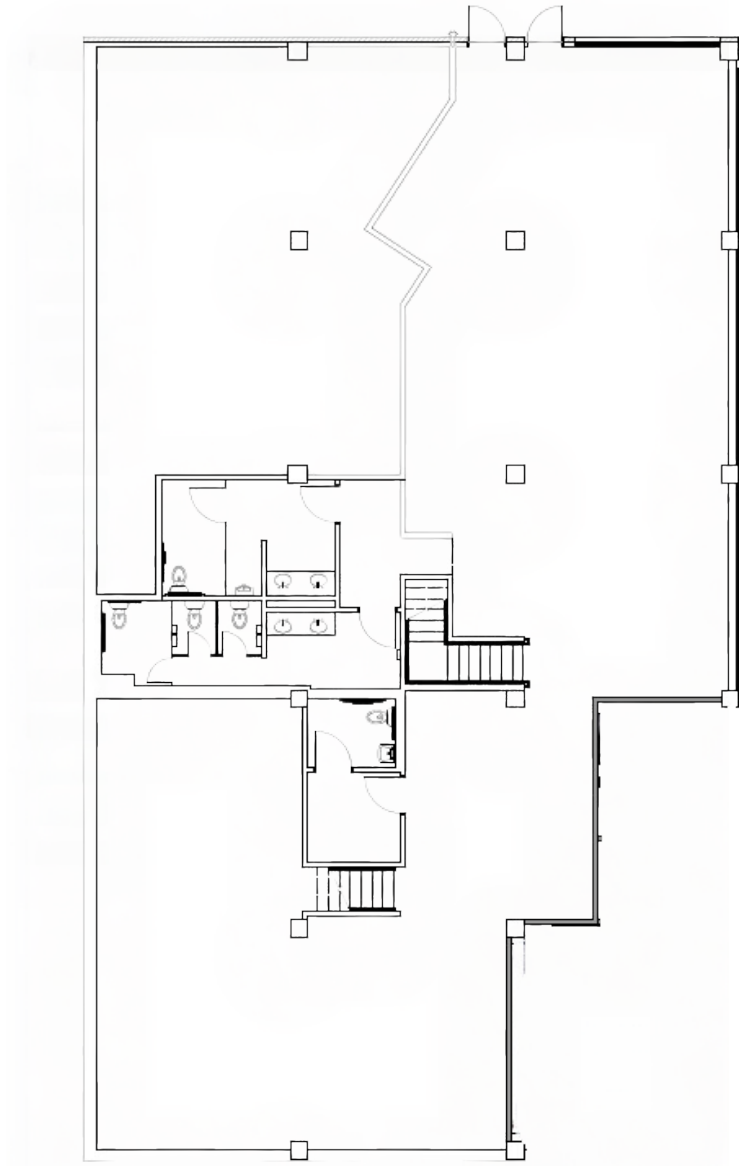
Carpathia Management
918.921.1499
leasing@carpathiaco.com



FLOOR PLAN



MEZZANINE



FIRST FLOOR

310 E 1st St.
308-A

