

# 1017 N. La Cienega Blvd

West Hollywood, CA 90069

MOVE IN READY OFFICES FOR LEASE

1017



**COMMERCIAL  
ASSET GROUP**

**ADAM FUNK**  
MANAGING DIRECTOR  
310.666.0124  
AFUNK@CAGRE.COM  
LIC. 02129715

# PROPERTY HIGHLIGHTS

---

## SPACE SIZE

**SUITE 200: ±2,627 RSF**

**SUITE 300\*: ±2,644 RSF**

**SUITE 320\*: ±2,555 RSF**

(\*CAN BE COMBINED FOR ±5,119 RSF)

## RENTAL RATE

**NEGOTIABLE**

**NET OF ELECTRIC**

## TERM

**NEGOTIABLE**

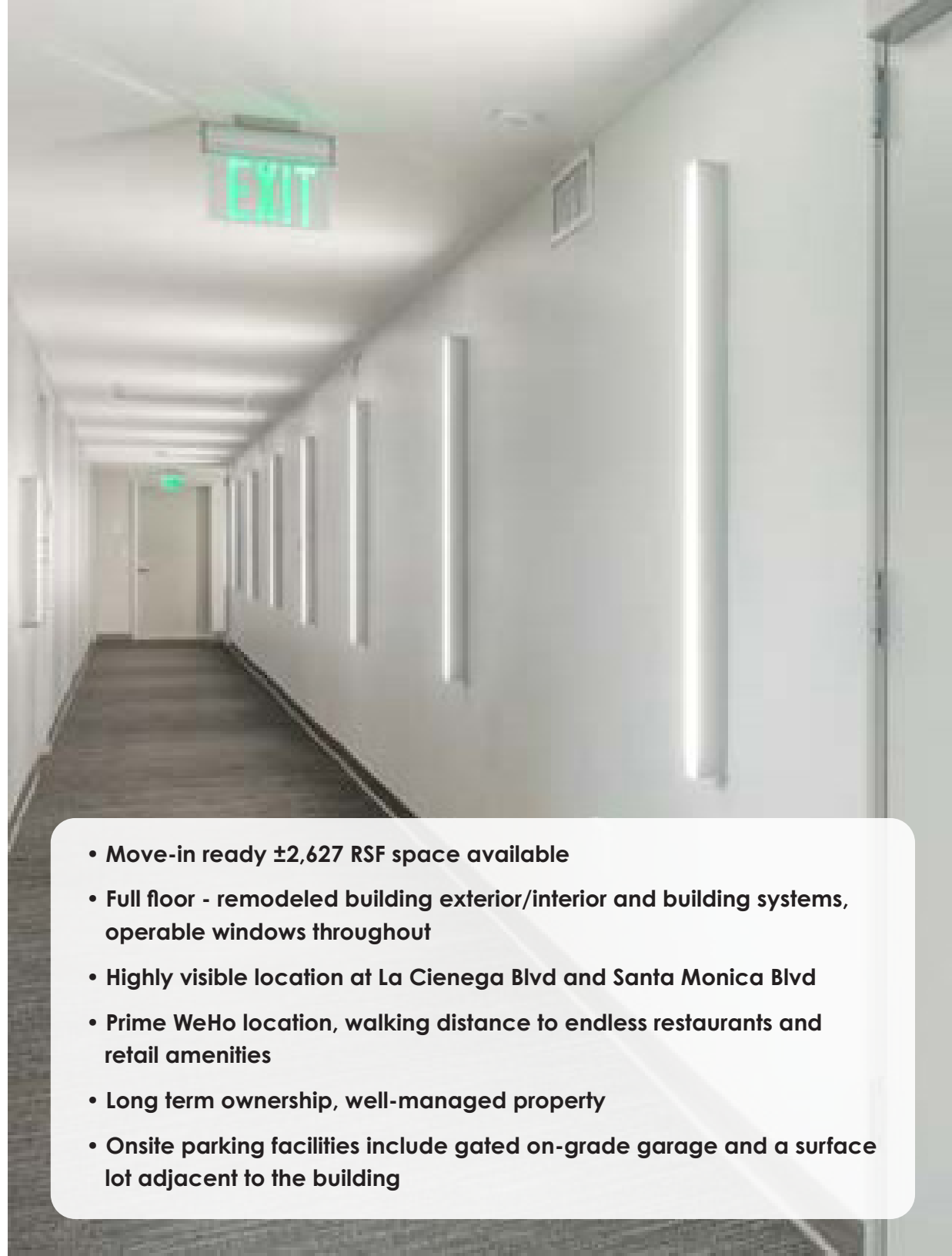
## AVAILABILITY

**IMMEDIATELY**

## PARKING

**2.5/1,000 SF**

**\$125/SPACE/MO**

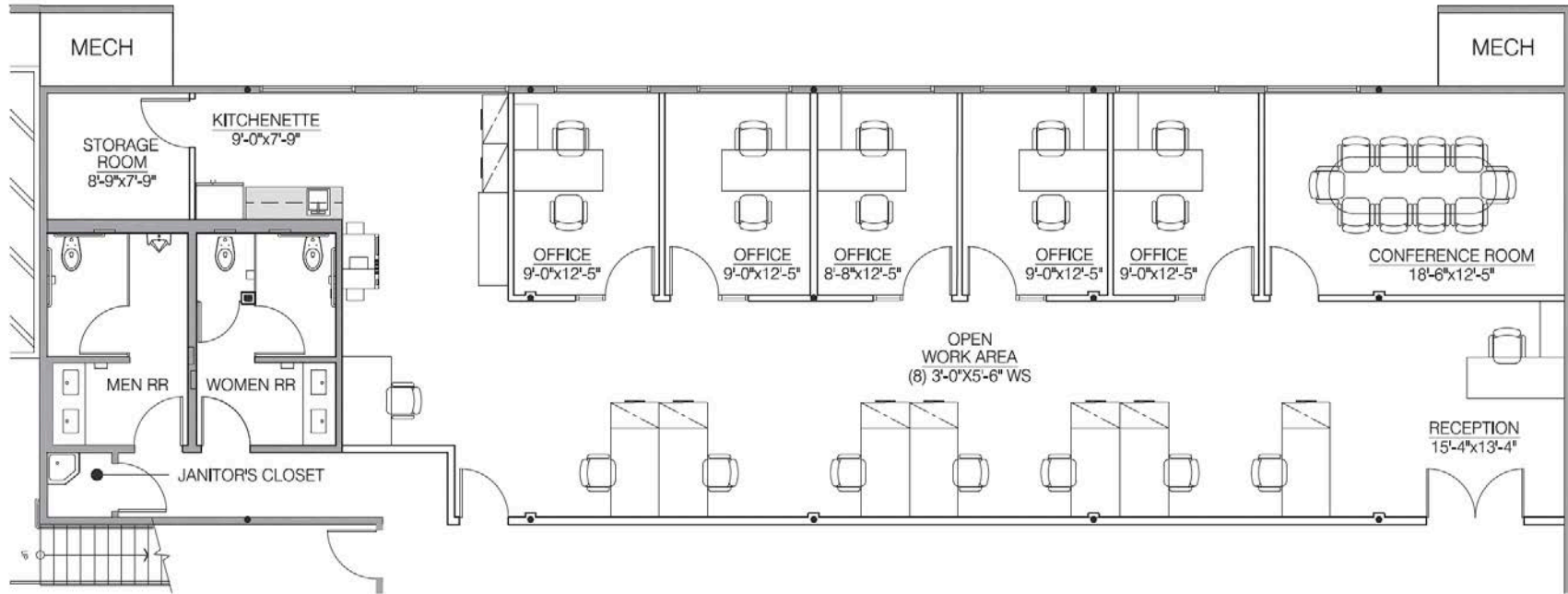


- Move-in ready ±2,627 RSF space available
- Full floor - remodeled building exterior/interior and building systems, operable windows throughout
- Highly visible location at La Cienega Blvd and Santa Monica Blvd
- Prime WeHo location, walking distance to endless restaurants and retail amenities
- Long term ownership, well-managed property
- Onsite parking facilities include gated on-grade garage and a surface lot adjacent to the building

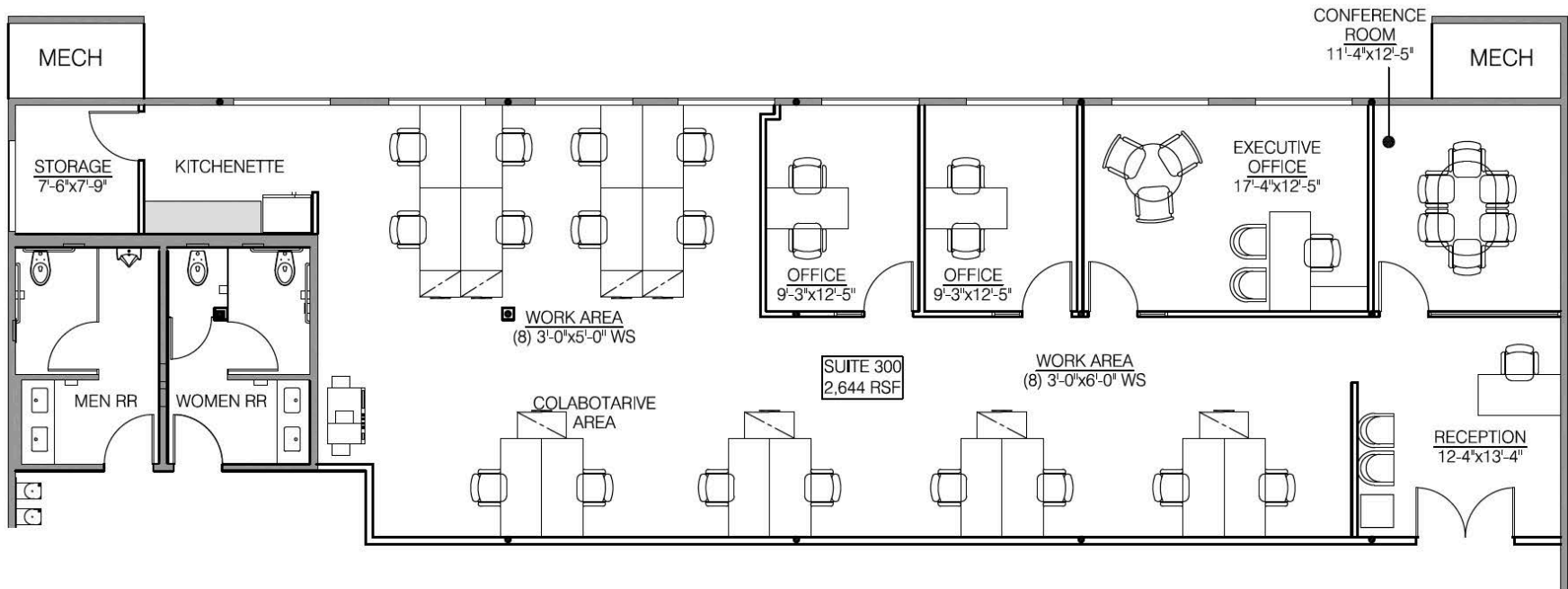
# AERIAL



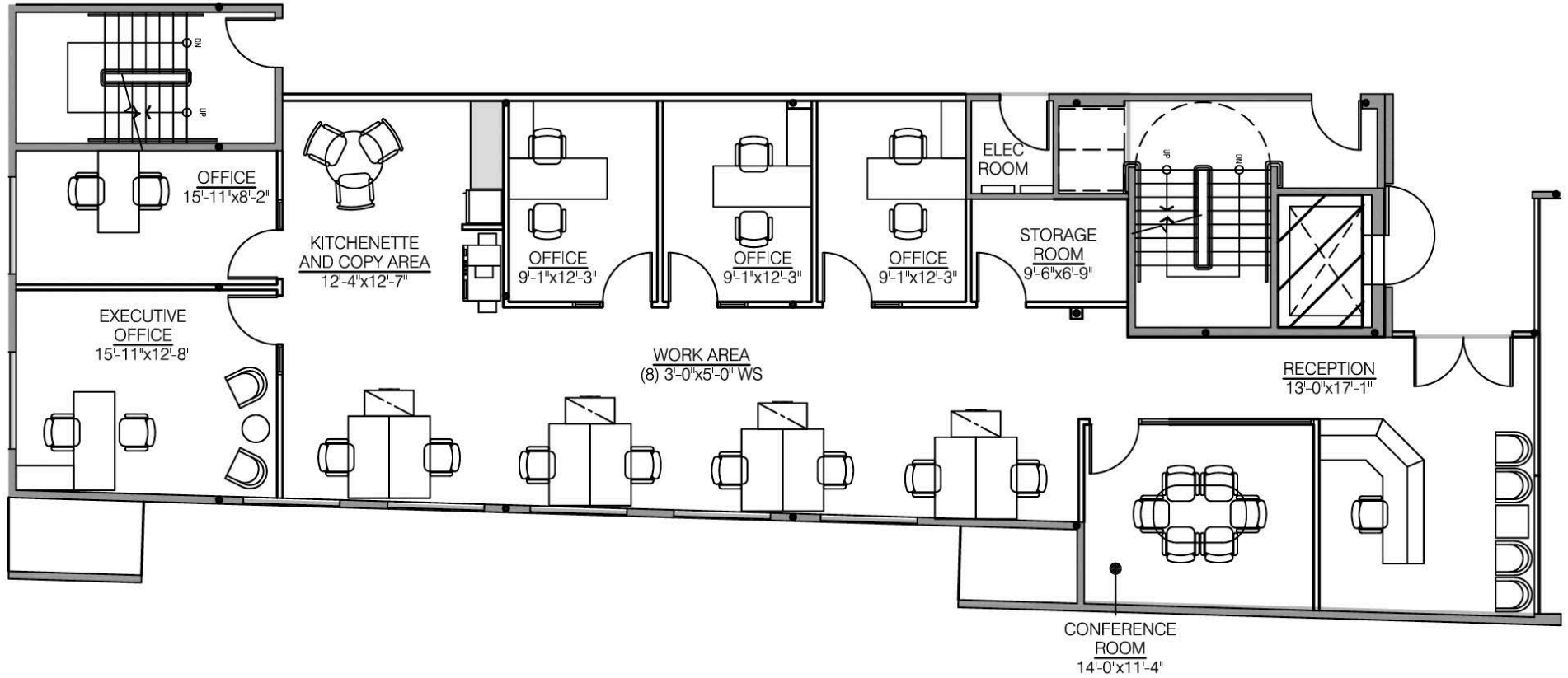
# SUITE 200: ±2,627 RSF



# SUITE 300: ±2,644 RSF

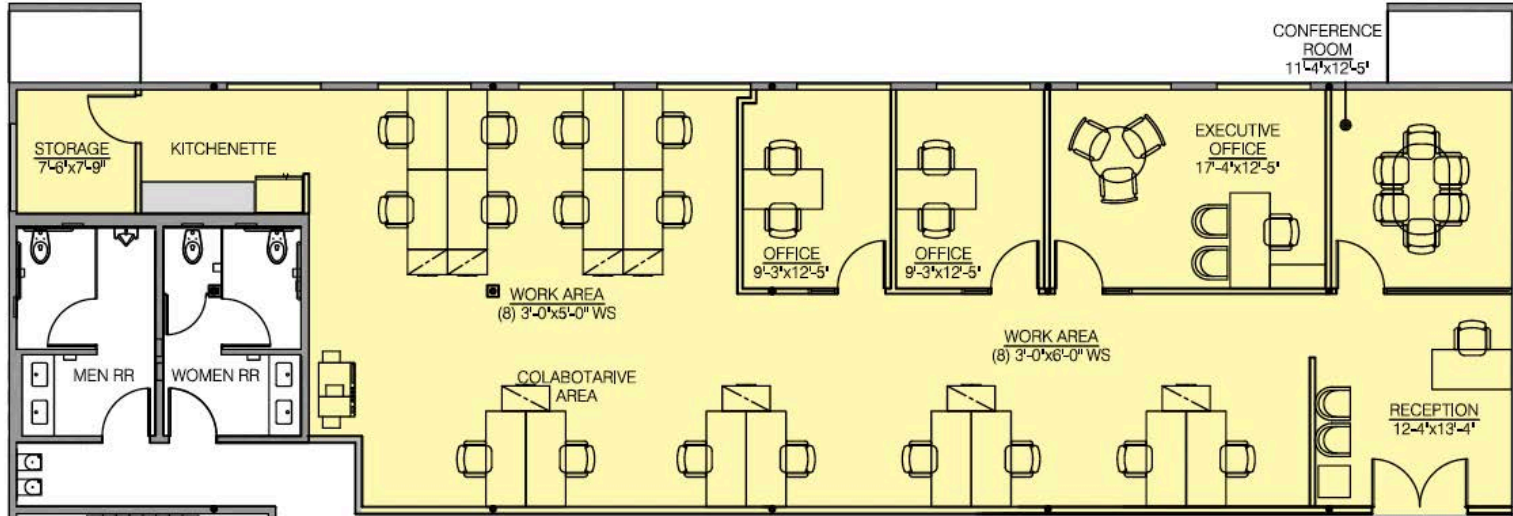


# SUITE 320: ±2,555 RSF

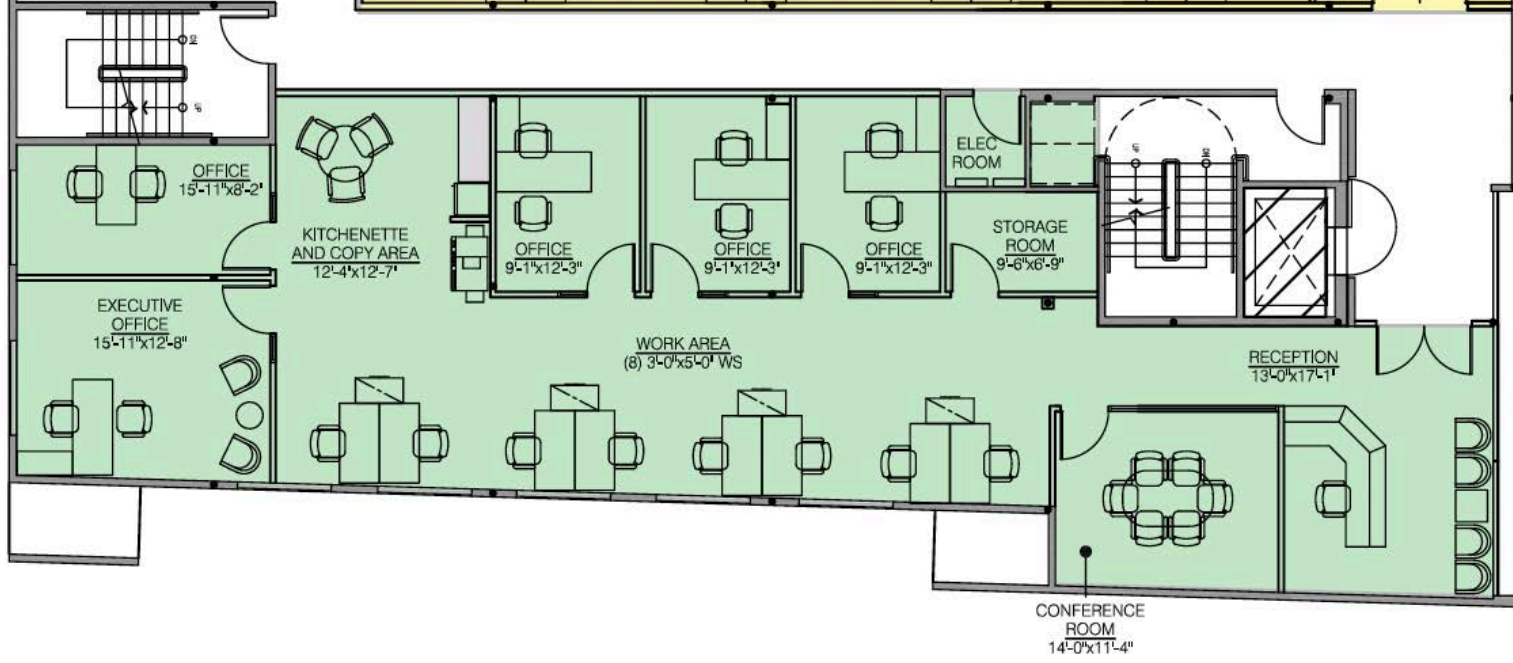


# SUITE 300/320 COMBINED: ±5,199 RSF

**SUITE 300:**  
**±2,644 RSF**



**SUITE 320:**  
**±2,555 RSF**



**ADAM FUNK**  
MANAGING DIRECTOR  
310.666.0124  
AFUNK@CAGRE.COM  
LIC. 02129715

**COMMERCIAL ASSET GROUP**  
190 N. CANON DRIVE, STE 300  
BEVERLY HILLS, CA 90210  
P: 310.275.8222 F: 310.275.8223  
CAGRE.COM LIC: 01876070



**COMMERCIAL  
ASSET GROUP**

These materials are based on information and content provided by others, which we believe are accurate. No guarantee, warranty or representation is made by Commercial Asset Group, Inc. or its personnel. All interested parties must independently verify accuracy and completeness. As well, any projections, assumptions, opinion, or estimates are used for example only and do not represent the current or future performance of the identified property. Your tax, financial, legal and toxic substance advisors should conduct a careful investigation of the property and its suitability for your needs, including land use limitations. The property is subject to prior lease, sale, change in price, or withdrawal from the market without notice.

