

SALISBURY LAKES III

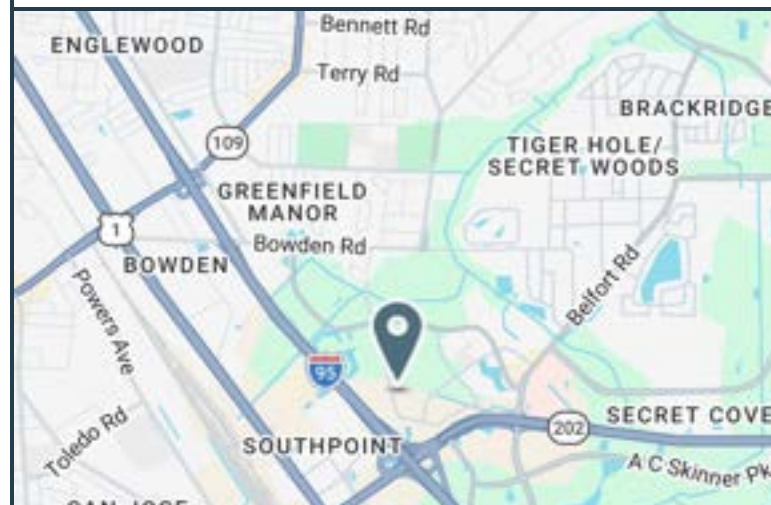
4237 SALISBURY ROAD, BUILDING 3
JACKSONVILLE, FL 32216

OFFICE BUILDING FOR LEASE

- \$17.00 Per/SF - Modified Gross
- 303/302 2,400 SF Combined
- Located in Southpoint, minutes from the St. Johns Town Center and abundant local amenities.
- Immediate access to JTB/I-95 interchange.
- Abundant on-site parking.
- A quiet campus setting, beautifully landscaped with lakeside views.
- Private entries, bathrooms, breakrooms and more (See attached floorplans)

AVAILABLE SPACES

SPACES	LEASE RATE	SPACE SIZE
Suite 306	\$17.00 SF/yr	1,487 SF
Suite 303	\$17.00 SF/yr	1,055 SF
Suite 302	\$17.00 SF/yr	1,345 SF
302/303	\$17.00 SF/yr	2,400 SF



ALEX EVANS
Broker / Owner

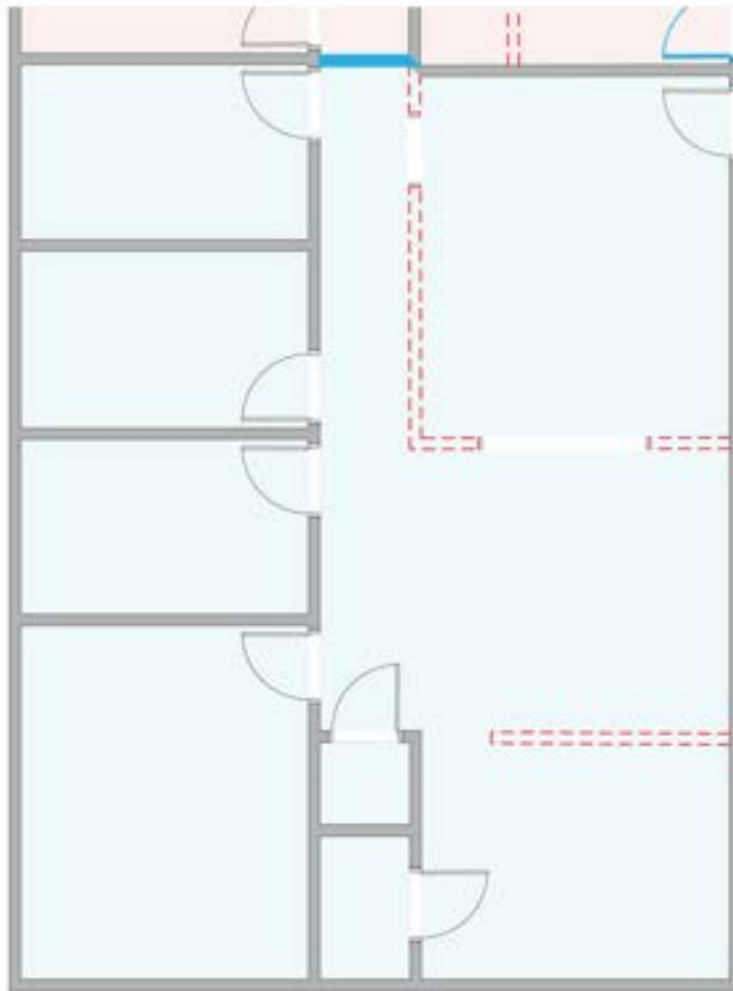
Phone | 904.210.9878
Email | alex@creprojax.com



EVANS COMMERCIAL
PROPERTIES, INC.

SUITE 306 FLOORPLAN

SALISBURY LAKES III



ALEX EVANS
Broker / Owner

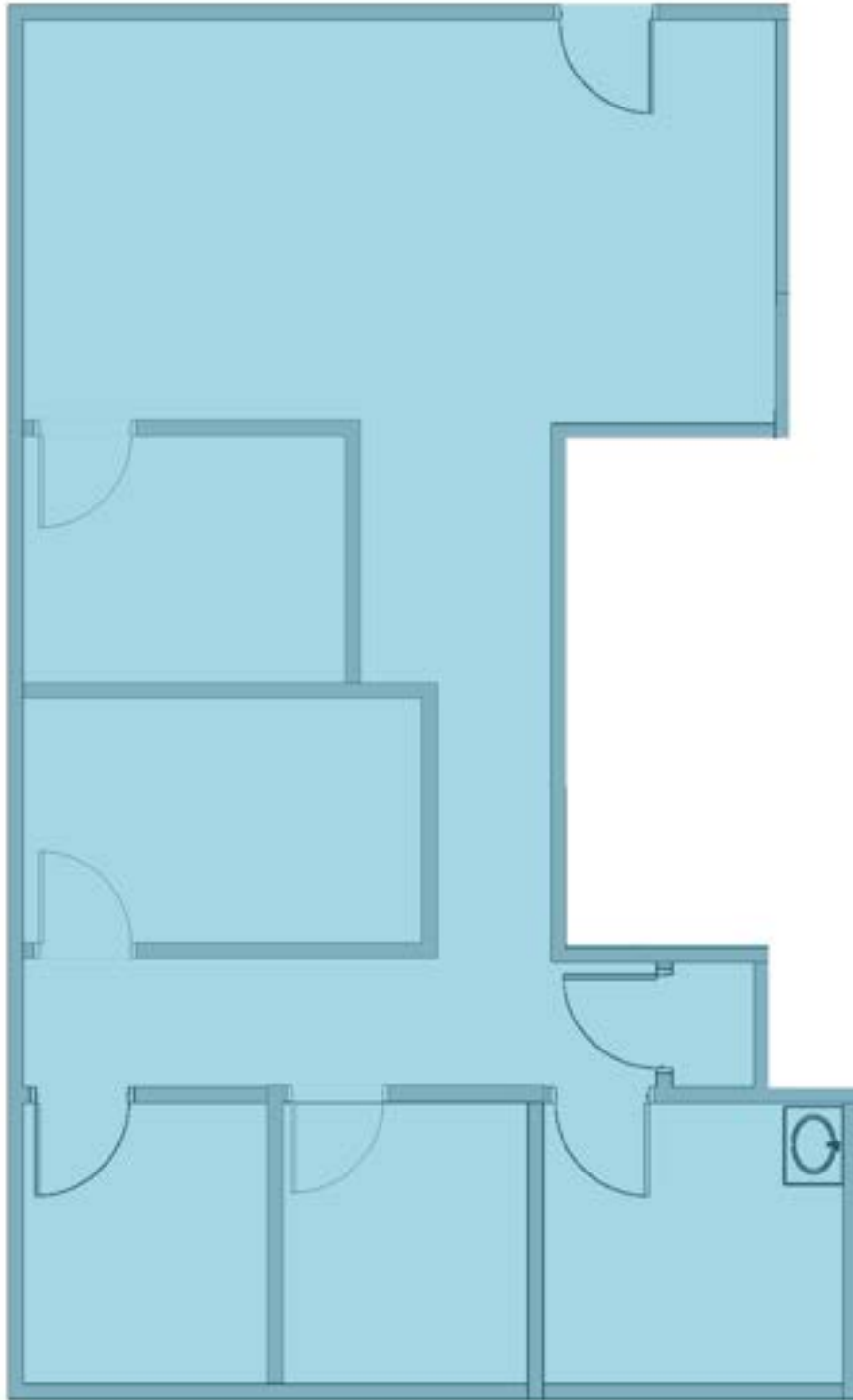
Phone | 904.210.9878
Email | alex@creprojax.com



EVANS COMMERCIAL
PROPERTIES, INC.

SUITE 303 FLOORPLAN

SALISBURY LAKES III



ALEX EVANS
Broker / Owner

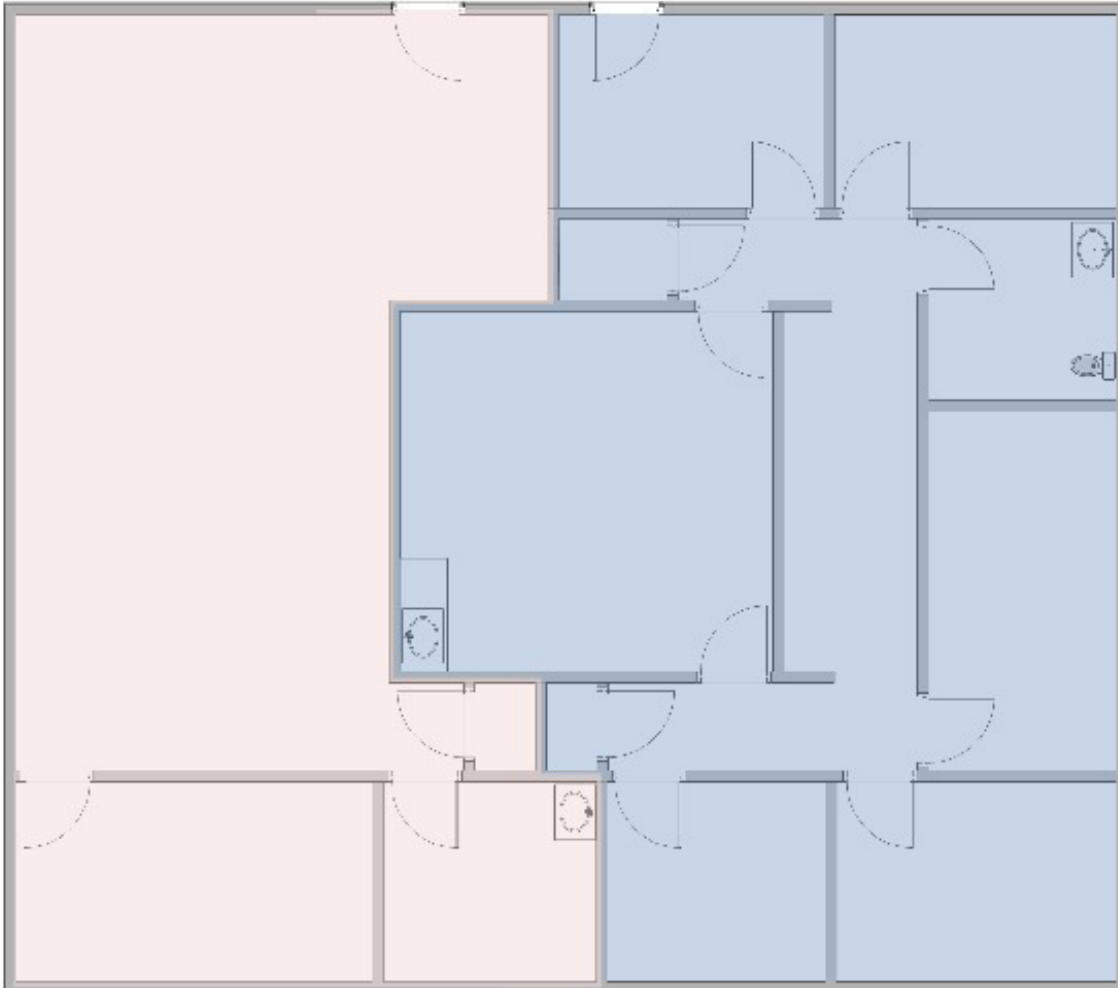
Phone | 904.210.9878
Email | alex@creprojax.com



EVANS COMMERCIAL
PROPERTIES, INC.

SUITE 302/303 FLOORPLAN

SALISBURY LAKES III



ALEX EVANS
Broker / Owner

Phone | 904.210.9878
Email | alex@creprojax.com



EVANS COMMERCIAL
PROPERTIES, INC.

ADDITIONAL PHOTOS

SALISBURY LAKES III



ALEX EVANS
Broker / Owner

Phone | 904.210.9878
Email | alex@creprojax.com



EVANS COMMERCIAL
PROPERTIES, INC.