


# Move-In Ready Call Center Space Available!

 Up to 60,000 RSF  
w/ 412 Workstations



## 8585 STEMMONS

Dallas, TX 75247



### WHY MOVE HERE?

- 7:1,000 Parking Ratio with a Covered Parking Garage Available
- Amenity Center - Full Service Gym, Tenant Lounge, On-Site Deli, Multiple Training Rooms (up to 75 chairs)
- Full Floors & "Plug and Play" Furniture Available
- Located in between I-35 and 183 in Dallas
- Signage Available



**MOVE-IN READY SUITES FROM  
7,900 - 65,000 RSF**

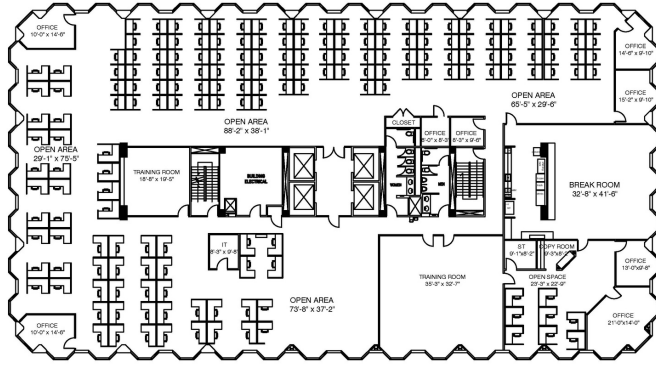
### LEASING INFORMATION

Kolby Dickerson  
kdickerson@txreproperties.com  
214-534-1599

Sam Davis  
sdavis@txreproperties.com  
214-684-7197

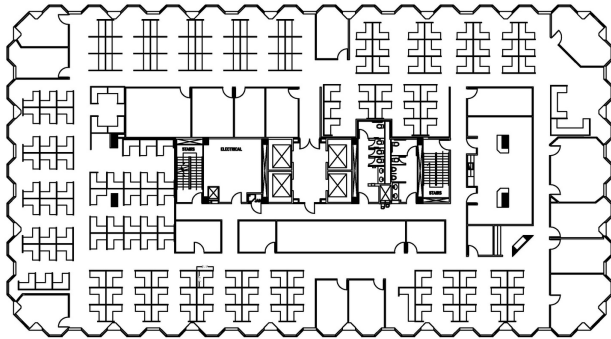


Up to 400 Workstations!



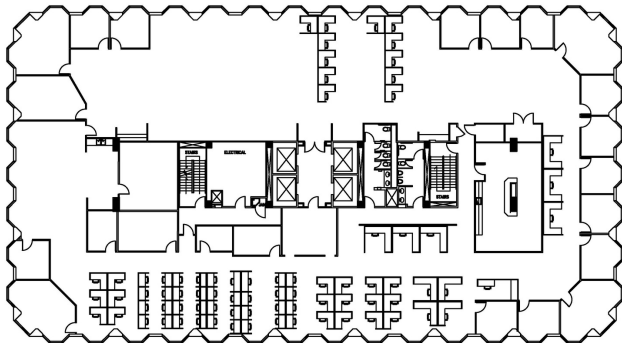
**8th Floor**  
19,275 RSF

178 Workstations  
8 Offices  
2 Training Rooms  
Break Room



**9th Floor**  
19,275 RSF

166 Workstations  
12 Offices  
Break Room



**10th Floor**  
19,275 RSF

77 Workstations  
16 Offices  
Break Room



## AMENITIES

- Fresh Deli
- Fitness Center with Shower Facilities
- Tenant Lounge
- Multiple Conference Centers (accommodates 100 people)
- On-Site Management, Security, and Engineering

**Plug and Play Full Floor Available**

### LEASING INFORMATION

Kolby Dickerson  
kdickerson@txreproperties.com  
214-534-1599

Sam Davis  
sdavis@txreproperties.com  
214-684-7197

