

# 595 Corporate Park of Commerce

10368 W State Road 84  
Davie, Florida 33324



## Contact Us

**Tom O'Loughlin**

Vice Chairman

+1 954 817 3919

[tom.oloughlin@cbre.com](mailto:tom.oloughlin@cbre.com)

**Michael Oretsky**

First Vice President

+1 954 798 4284

[michael.oretzky@cbre.com](mailto:michael.oretzky@cbre.com)

**Frankie Buffalino**

Associate

+1 516 640 8861

[frank.buffalino@cbre.com](mailto:frank.buffalino@cbre.com)

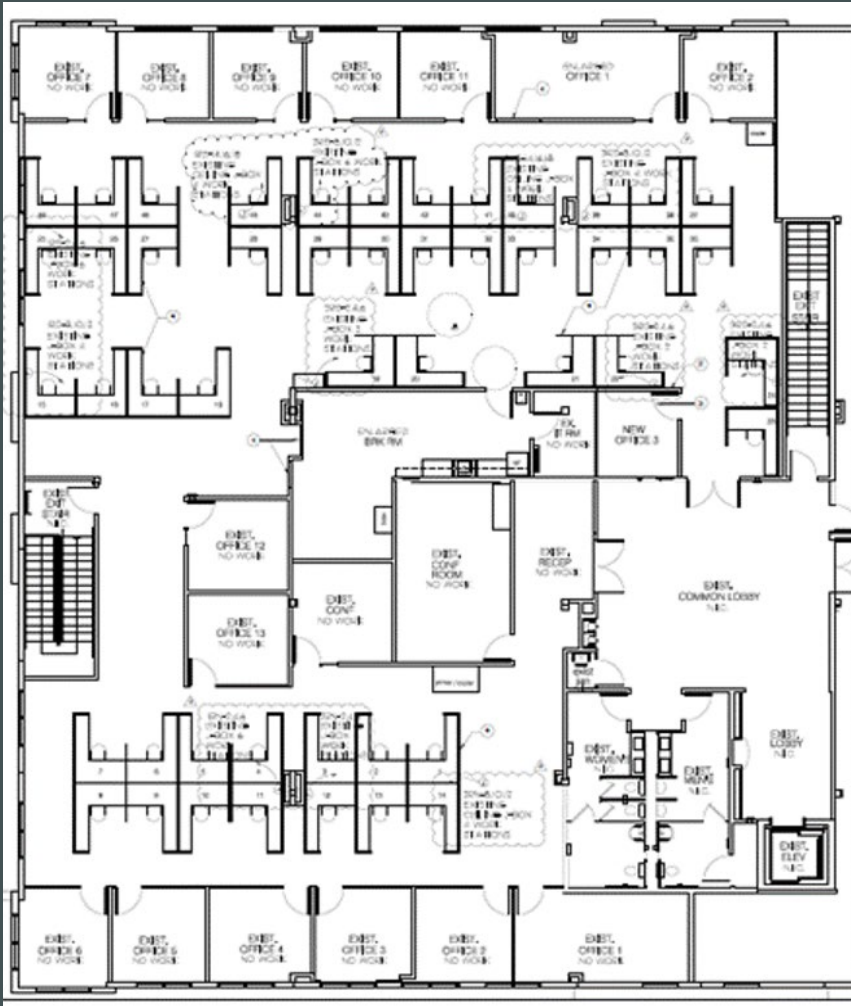
# 595 Corporate Park of Commerce

10368 W State Road 84, Suite 201 & 203 | Davie, Florida 33324

## Property Features

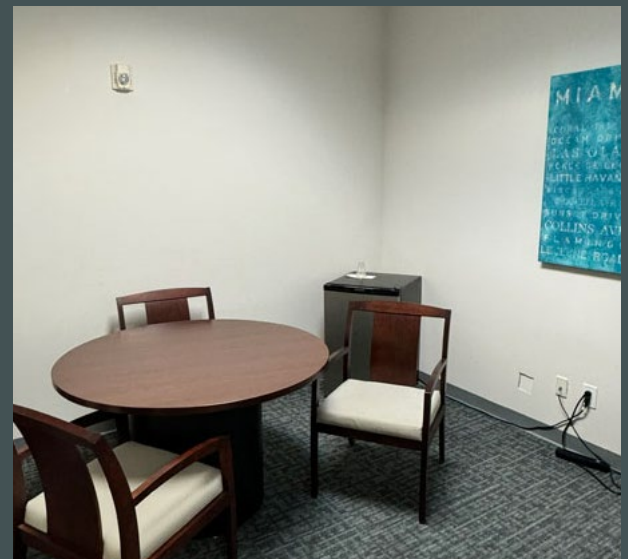
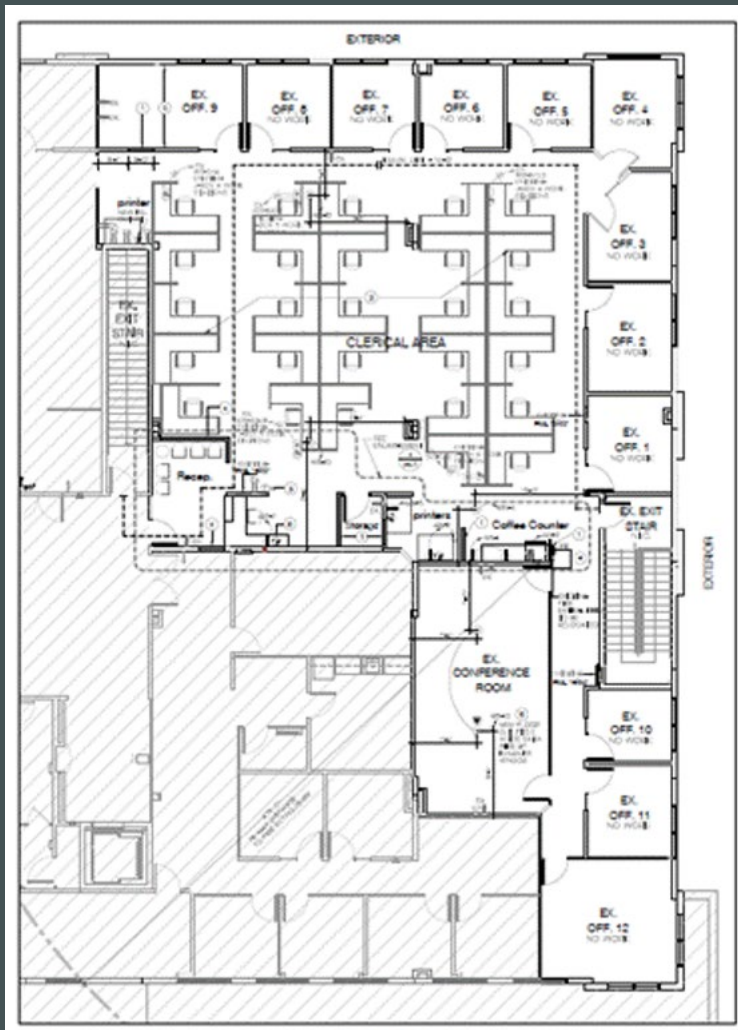
- + 100% Office space
- + 100% HVAC space
- + Best-in-class business park
- + Suites are contiguous
- + Convenient access to a wide range of amenities
- + Within 30 minutes of two (2) international airports and ports
- + Direct I-595 frontage (108,000 AADT)

## Suite 201 Floor Plan



Building	Suite	Available	SF	Office	HVAC
10368 W SR 84	201	Immediately	8,980 SF	8,890 SF	100%

# Suite 203 Floor Plan



Building	Suite	Available	SF	Office	HVAC
10368 W SR 84	203	Immediately	5,560 SF	5,560 SF	100%