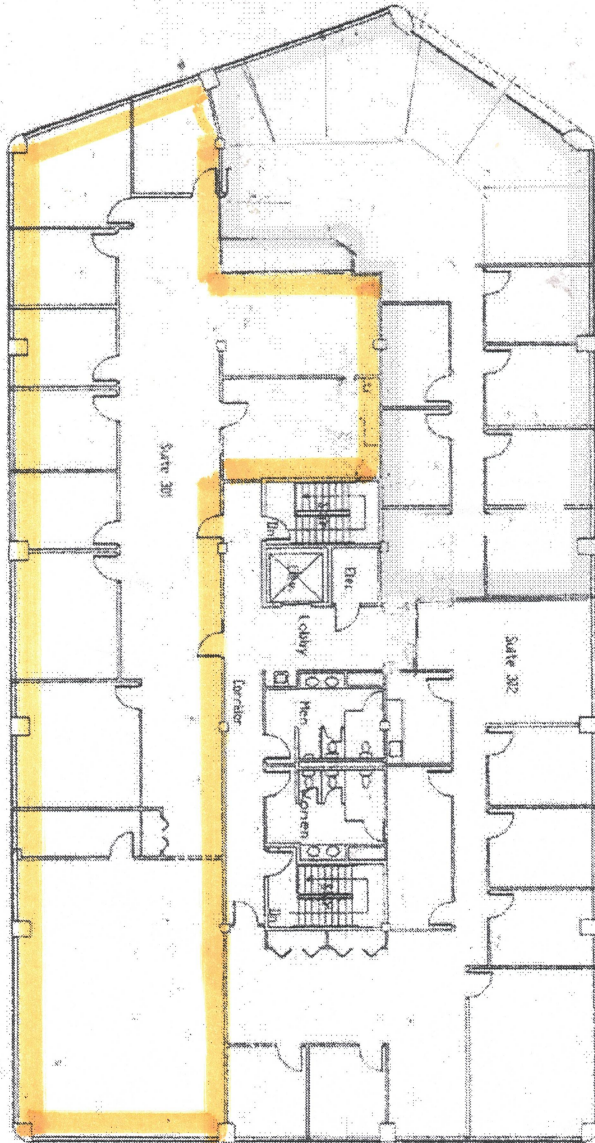


THIRD FLOOR PLAN



A3

PROJECT NO.	DATE	BY	CHK'D BY

EXISTING BUILDING AT:
800 SOUTH MAIN STREET
 GREAT WOODS OFFICE PARK
 WAINSFIELD, MASSACHUSETTS

THIRD FLOOR PLAN

REVISIONS			
NO.	DATE	BY	DESCRIPTION



Walsh/Copkis Associates, Inc.
 Architects & Consultants
 1100 South Main Street
 Wainfield, MA 01088
 413/833-8700