

EAST BELT BUSINESS PARK

1485 EAST SAM HOUSTON PARKWAY SOUTH | SUITE 100 | PASADENA, TX 77503

 TRANSWESTERN

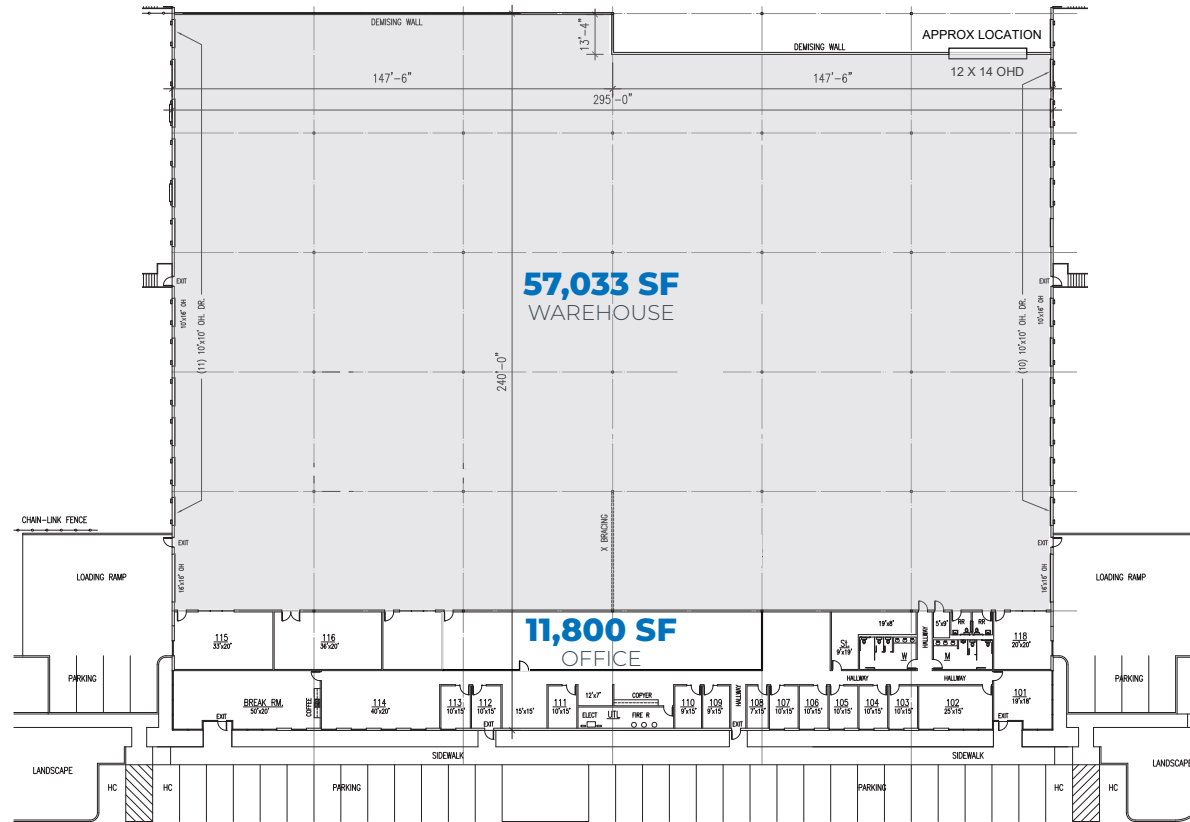


FOR LEASE | 68,833 SF Office/Warehouse Space Near the Port of Houston

EAST BELT BUSINESS PARK

1485 EAST SAM HOUSTON PARKWAY SOUTH | SUITE 100 | PASADENA, TX 77503

FLOOR PLAN



PROPERTY FEATURES

- 68,833 SF Total
- 11,800 SF Office
- 57,033 SF Warehouse
- Cross Dock Configuration
- 24' Clear Height
- (21) 10' x 10' Dock High Loading Doors
- (2) 10' x 16' Dock High Loading Door
- (2) 16' x 16' Ramp Door
- (6) Pit Levelers
- LED Warehouse Lights
- ESFR Sprinkler System
- Fenced Area in Truck Court (Can Be Utilized for Outside Storage)
- Proximity to Barbours Cut and Bayport Container Terminals

T TRANSWESTERN
LEASING CONTACTS

CRAIG BEAN
713.490.3784
CRAIG.BEAN@TRANSWESTERN.COM

BRIAN GAMMILL
713.270.3321
BRIAN.GAMMILL@TRANSWESTERN.COM

DARRYL NOON
713.270.3325
DARRYL.NOON@TRANSWESTERN.COM

EAST BELT BUSINESS PARK

1485 EAST SAM HOUSTON PARKWAY SOUTH | SUITE 100 | PASADENA, TX 77503

AERIAL MAP



STRATEGICALLY LOCATED
Immediate access to Beltway 8 & Highway 225.

T **TRANSWESTERN**
LEASING CONTACTS

CRAIG BEAN
713.490.3784
CRAIG.BEAN@TRANSWESTERN.COM

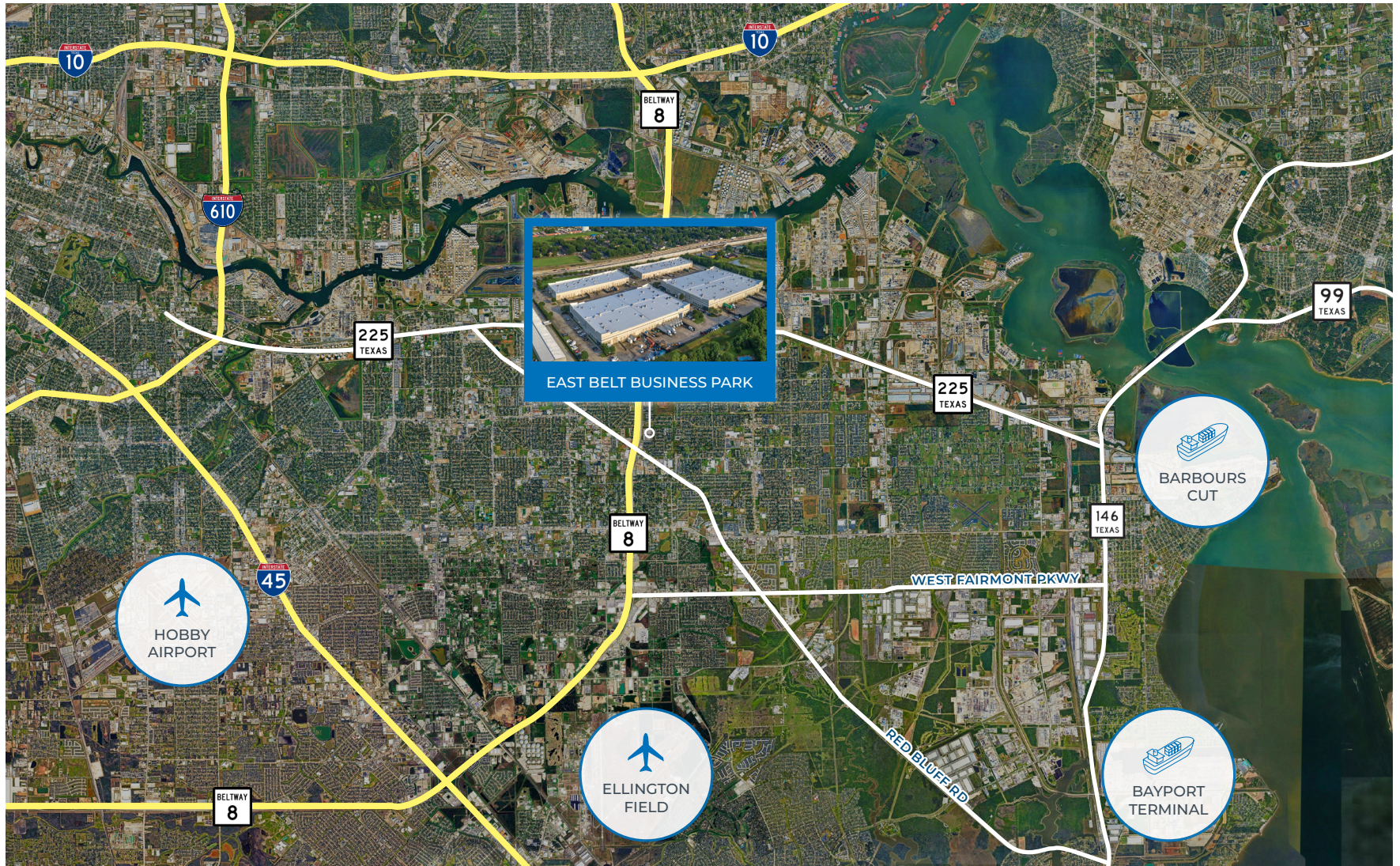
BRIAN GAMMILL
713.270.3321
BRIAN.GAMMILL@TRANSWESTERN.COM

DARRYL NOON
713.270.3325
DARRYL.NOON@TRANSWESTERN.COM

EAST BELT BUSINESS PARK

1485 EAST SAM HOUSTON PARKWAY SOUTH | SUITE 100 | PASADENA, TX 77503

LOCATION



TW TRANSWESTERN
LEASING CONTACTS

CRAIG BEAN
713.490.3784
CRAIG.BEAN@TRANSWESTERN.COM

BRIAN GAMMILL
713.270.3321
BRIAN.GAMMILL@TRANSWESTERN.COM

DARRYL NOON
713.270.3325
DARRYL.NOON@TRANSWESTERN.COM