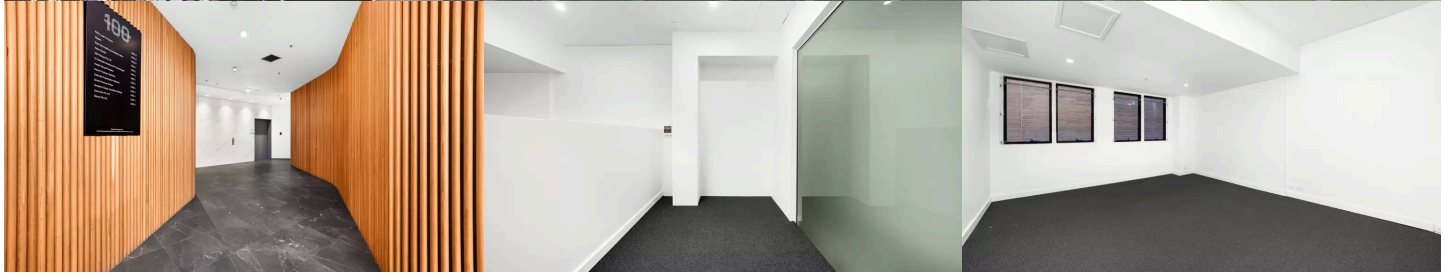




Richard Matthews
REAL ESTATE



41 & 44/100 New South Head Road Edgecliff, 2027 NSW

Boutique Commercial Suite With On Title Parking in Prestigious Edgecliff Position



POTENTIAL:

Perfectly positioned in the heart of Edgecliff's thriving commercial precinct, this boutique dual suite opportunity is ideal for professionals, consultants or investors seeking high exposure, convenience and long term growth.

- Mixed Use, offering flexibility across a range of professional uses
- Located just 150m from Edgecliff Station and Bus Interchange
- Suitable for medical, consulting, office, allied health and more

PROPERTY:

- Total combined size of approx. 47sqm*
- Boutique commercial building with modern finishes and professional aesthetic
- Open plan main office plus separate glass-partitioned reception area
- Beautiful entryway with marble finishes and warm timber paneling
- Brand new commercial grade carpet throughout

For Sale \$280,000 - \$320,000

Inspect

Inspection of this property is available strictly by arrangement only.

Matthew Everingham

✉ matthew@richardmatthews.com.au

☎ 0402 423 893



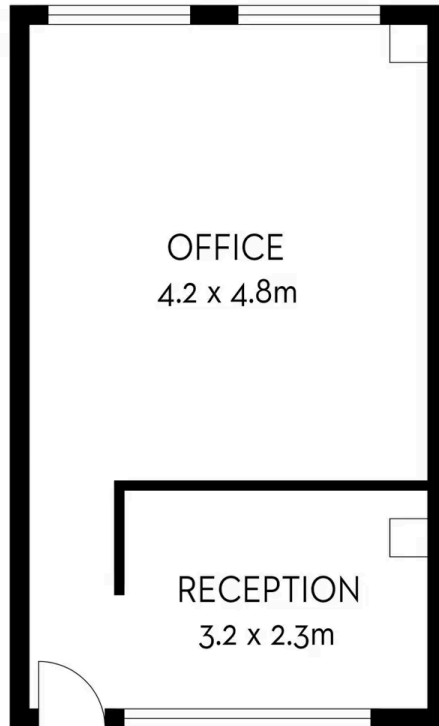
Richard Matthews

REAL ESTATE



Richard Matthews
REAL ESTATE

Unit 41/100 New South Head Road, Edgecliff



Floorplan Disclaimer: This floorplan/site plan is intended as an approximate guide only. No representation or warranties of any nature are given or intended and any person or company using this information other than as a guide should always rely on their own enquiries.