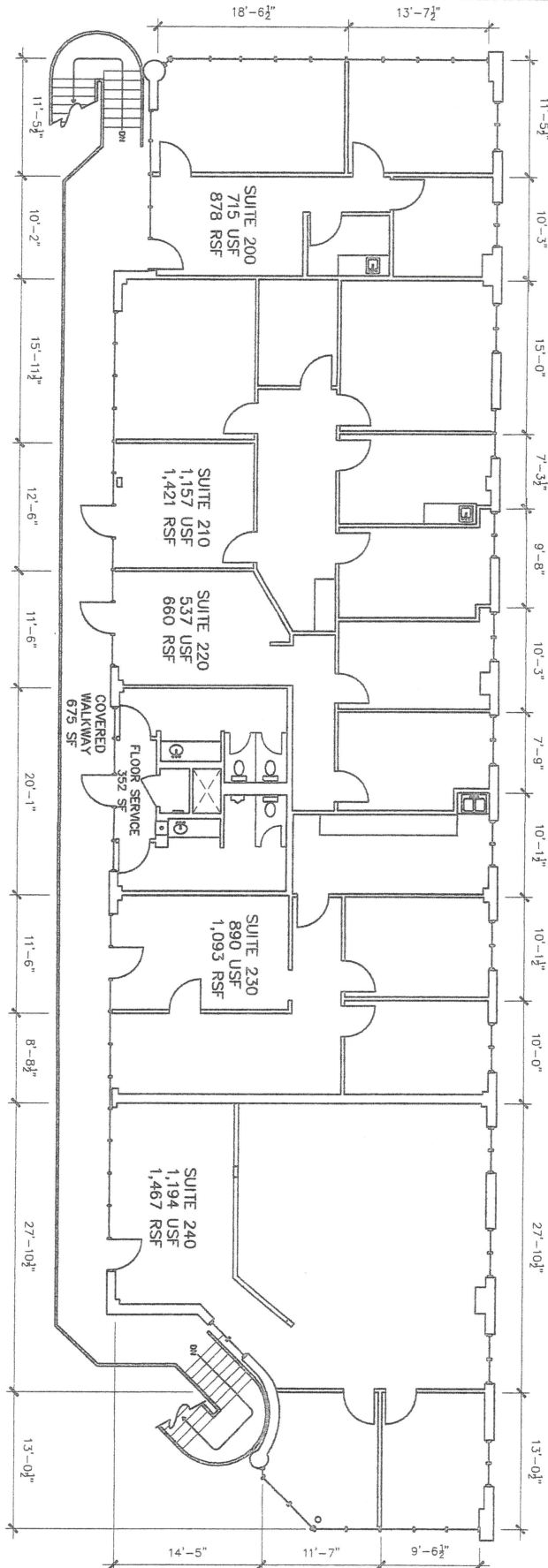


NOTES:

- 1) DIMENSIONS ARE TO SHOW ROOM SIZES. SQUARE FOOTAGE CALCULATIONS ARE DONE TO BOMA OFFICE STANDARDS.
- 2) RENTABLE AREA INCLUDES UNENCLOSED OCCUPANT CIRCULATION.

SECOND FLOOR



NOT TO SCALE

Drawing for:
LEFNER ENTERPRISES INC.
2579 Western Trails Blvd.
Suite 150
Austin, Texas

2600 Western Trails Blvd.
Austin, Texas
2nd Fl USEABLE AREA: 4,493 S.F.
2nd Fl RENTABLE AREA: 5,519 S.F.

THE MEASUREMENTS, FLOOR PLANS, AND CALCULATIONS ARE ACCURATE USING BOMA MEASUREMENT STANDARDS FOR OFFICE BUILDINGS.
ANSI/BOMA Z65.1 - 2017
METHOD A
Project No.: 2016.01
Date: February 10, 2020
©2020

DIMENSIONS
FLOORPLANS

Austin, Texas
dimensionsfloorplans.com
Phone: (512)342-0114